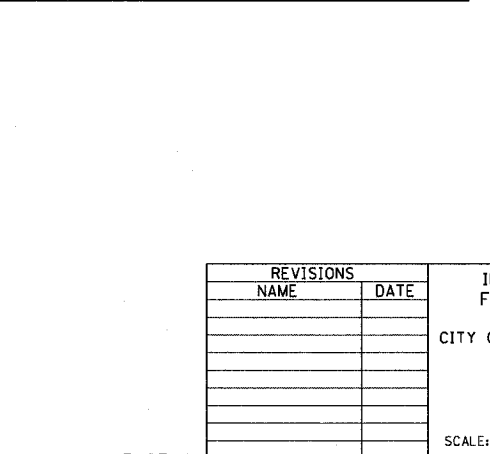
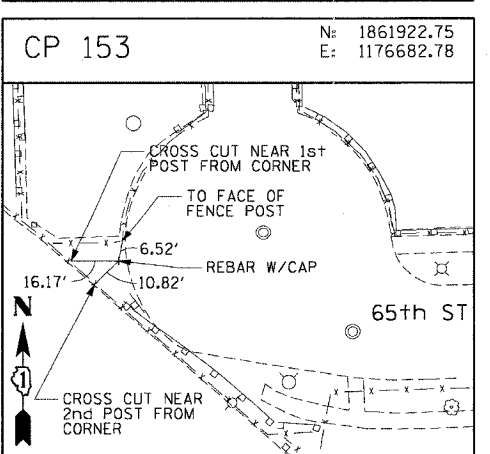
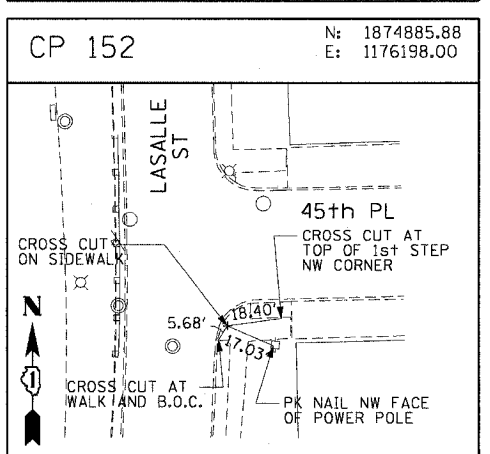
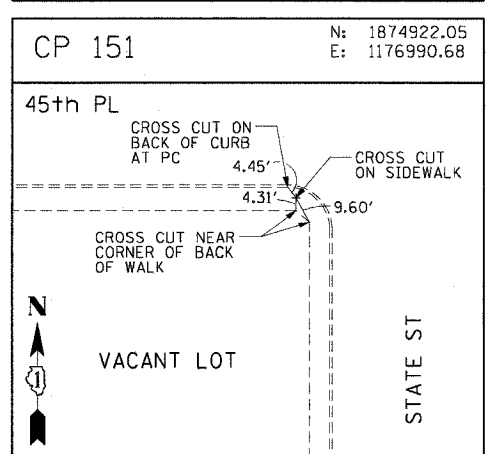
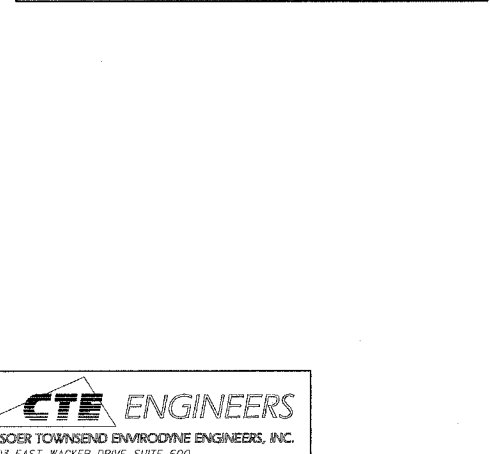
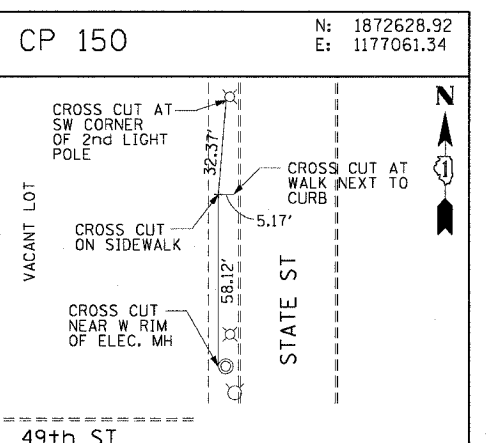
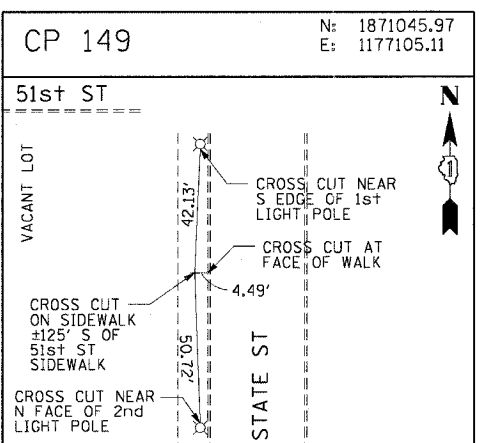
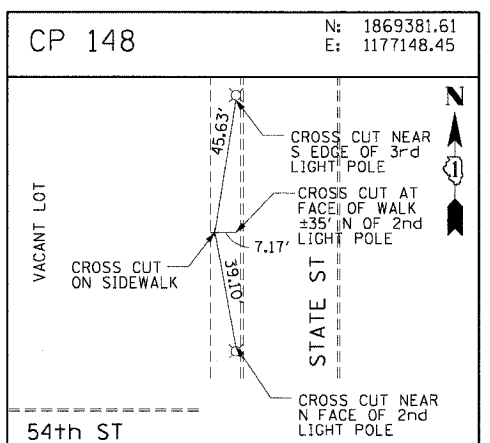
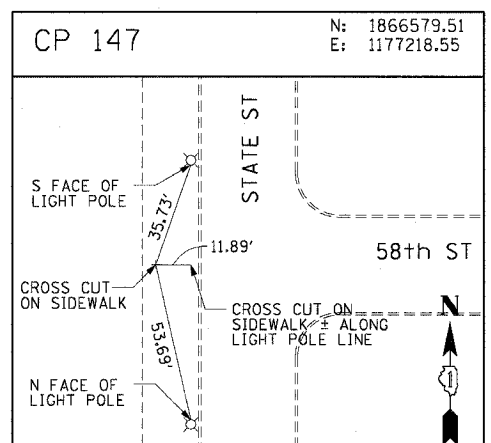
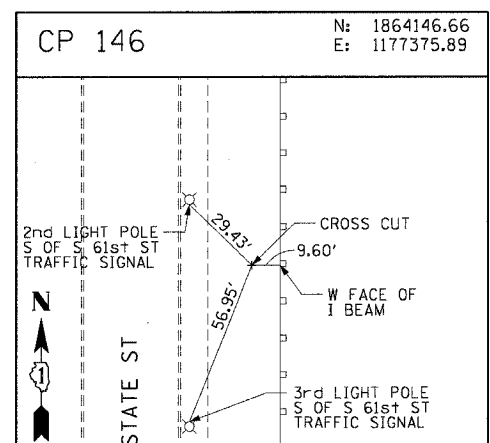
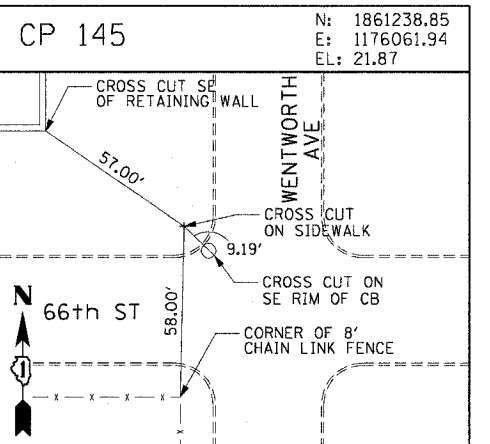
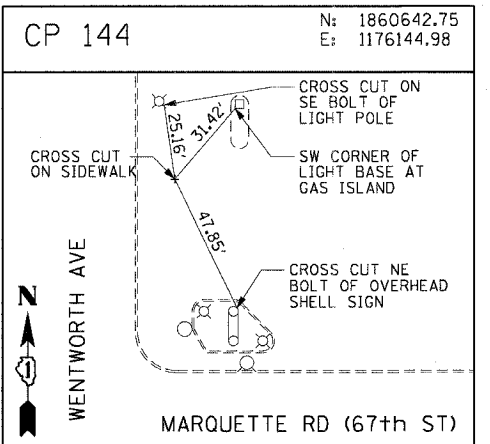
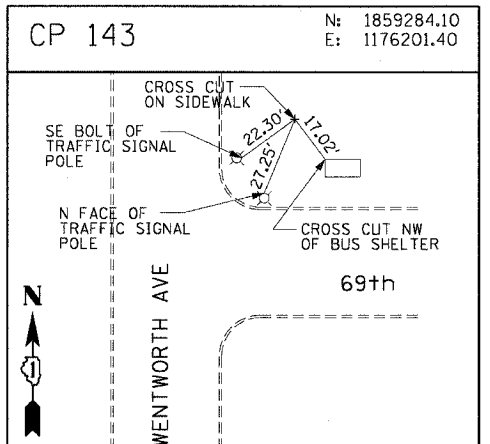
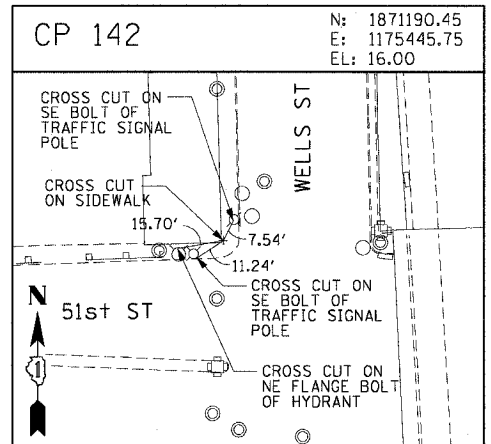
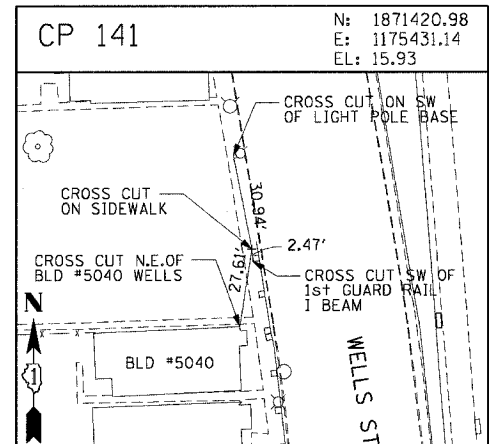
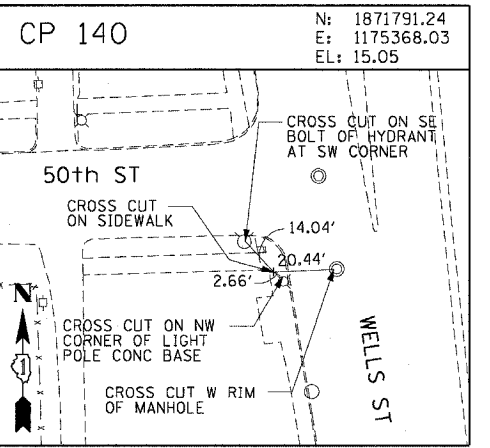
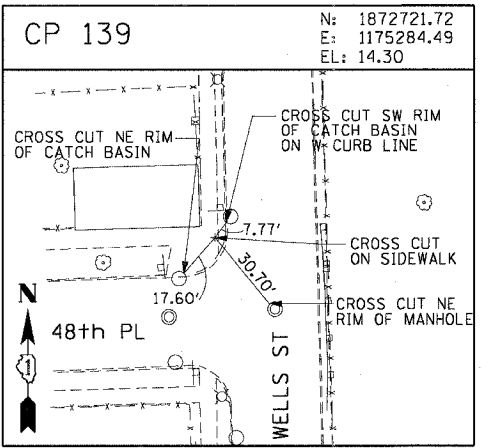
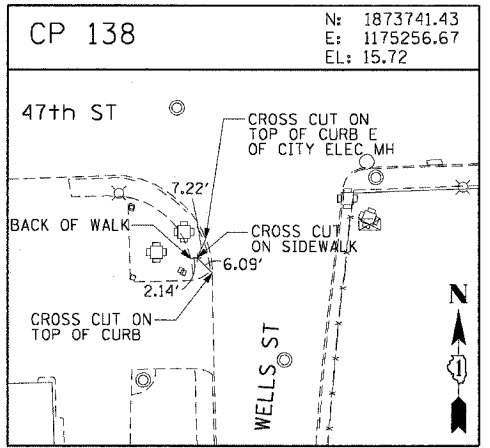
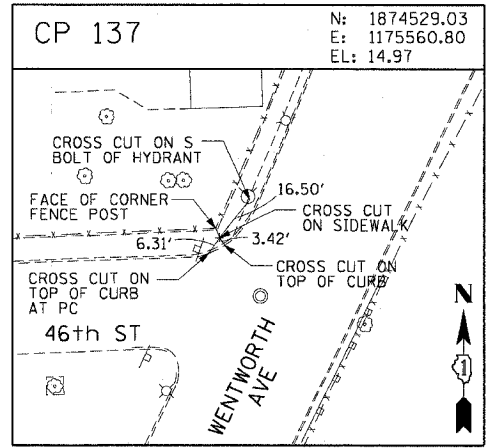
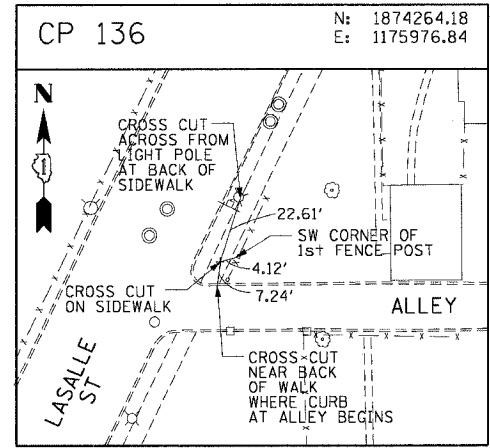


F.A.I. RTE.	SECTION	COUNTY	TOTAL SHEETS	SHEET NO.
90/94	2004-101 I	COOK	31	15
STA.	TO STA.			
FED. ROAD DIST. NO. 1 ILLINOIS FED. AID PROJECT				
62842				



**CTE ENGINEERS**  
 CONSOER TOWNSEND ENVIRONMENTAL ENGINEERS, INC.  
 303 EAST WACKER DRIVE, SUITE 600  
 CHICAGO, ILLINOIS 60601-5222, PHONE: (312) 938-0300

REVISIONS	
NAME	DATE

ILLINOIS DEPARTMENT OF TRANSPORTATION  
 F.A.I. 90/94 (DAN RYAN EXPRESSWAY)  
 63rd ST TO 59th ST (FRONTAGE ROADS)  
 CITY OF CHICAGO LIGHTING CONDUIT & FOUNDATIONS  
 WELLS STREET AND WENTWORTH AVENUE

**SURVEY TIES AND CONTROL POINTS**

SCALE: 1"=30'  
 DATE: February 11, 2005

DRAWN BY: MRK  
 CHECKED BY: JAL

V:\tech\nt\p40468\p40468\_elec\4-entr\9\st\contract\9\2\05\6\21032.st