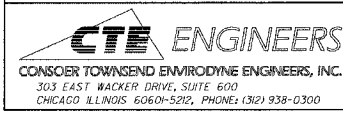
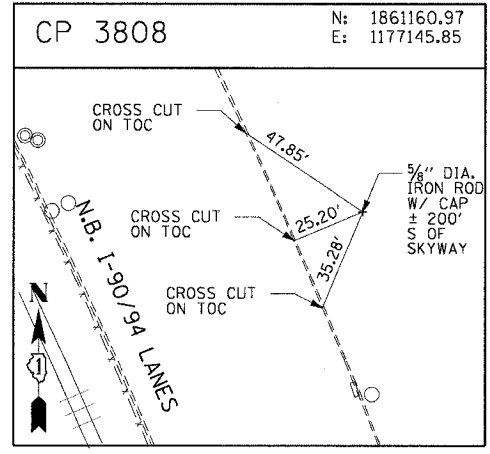
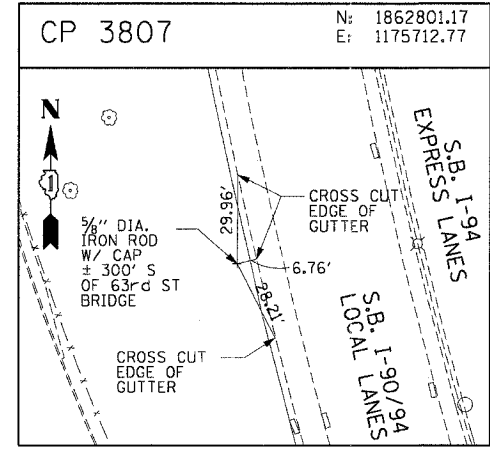
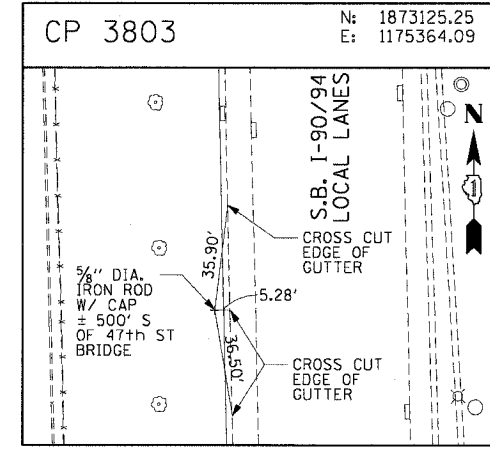
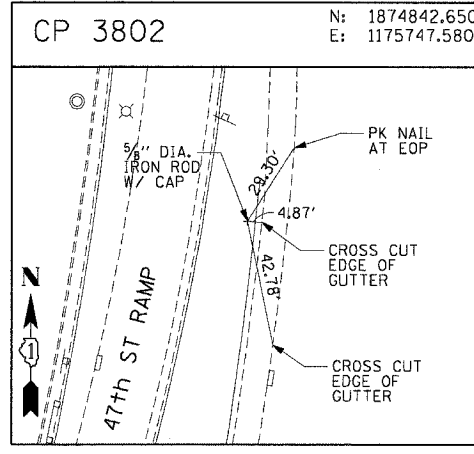
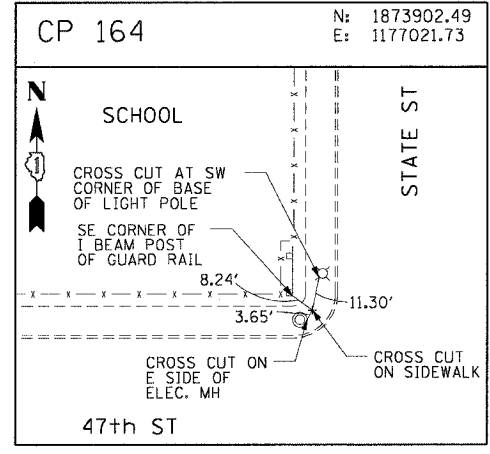
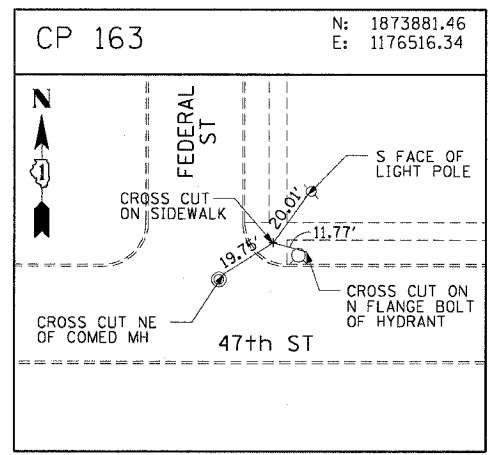
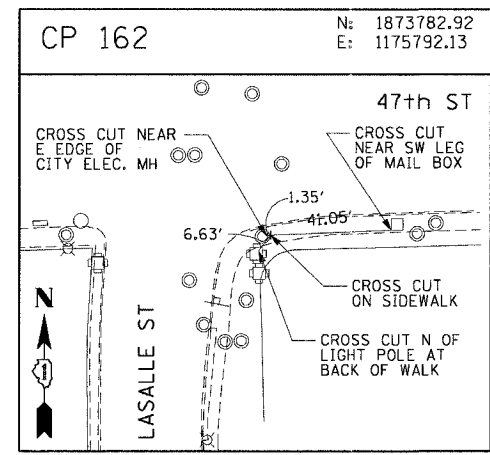
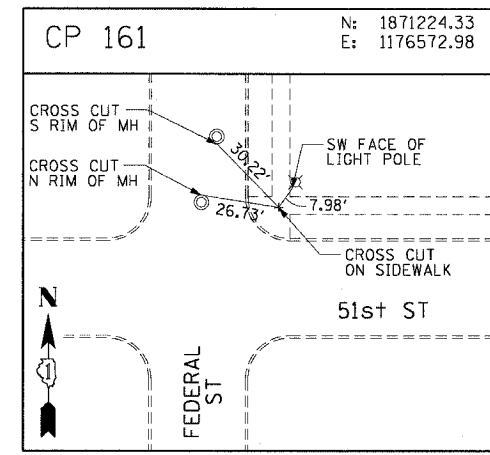
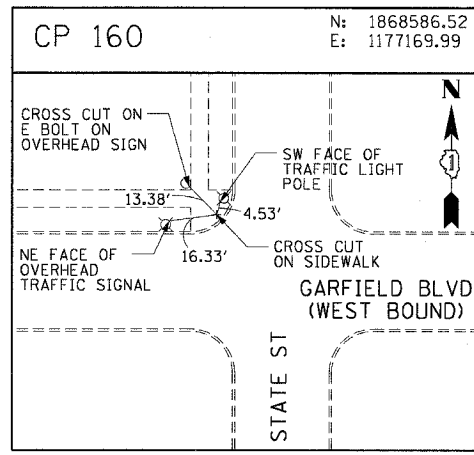
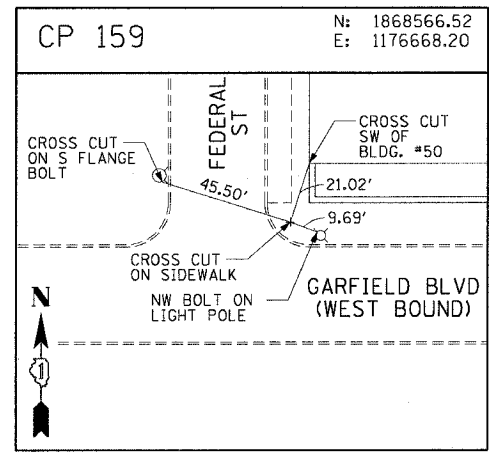
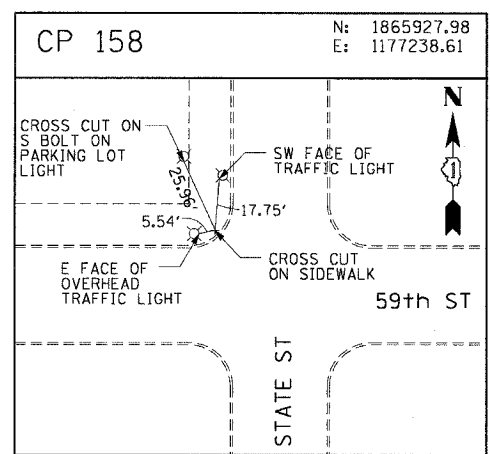
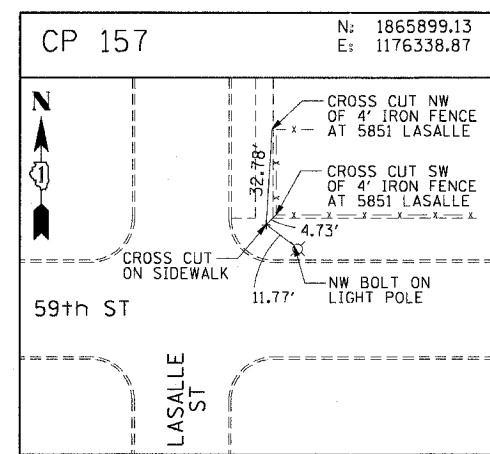
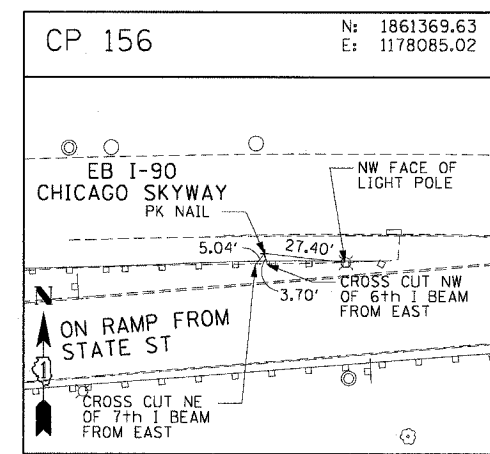
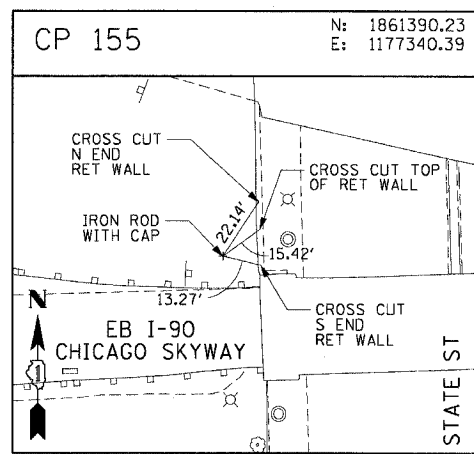
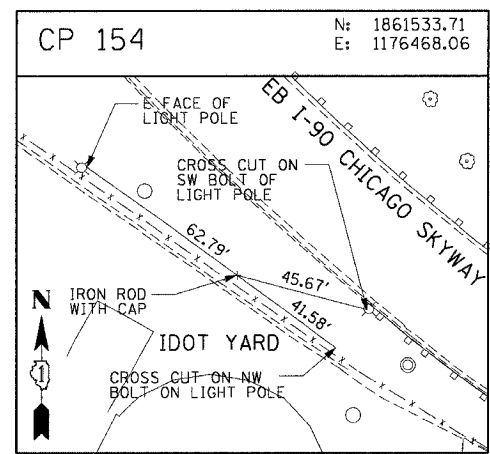


F.A.I. RTE.	SECTION	COUNTY	TOTAL SHEETS	SHEET NO.
90/94	2004-101 I	COOK	31	16
STA.		TO STA.		
FED. ROAD DIST. NO. 1 ILLINOIS FED. AID PROJECT				
62842				



REVISIONS	
NAME	DATE

ILLINOIS DEPARTMENT OF TRANSPORTATION
 F.A.I. 90/94 (DAN RYAN EXPRESSWAY)
 63rd ST TO 59th ST (FRONTAGE ROADS)
 CITY OF CHICAGO LIGHTING CONDUIT & FOUNDATIONS
 WELLS STREET AND WENTWORTH AVENUE

SURVEY TIES AND CONTROL POINTS

SCALE: 1"=30'
 DATE: February 11, 2005
 DRAWN BY: MRK
 CHECKED BY: JAL

V:\tech\m\p\40468\p40468.dwg\p40468.dwg\contract 902\09092\02\02.dwg 02/10/2005 09:30:56 AM