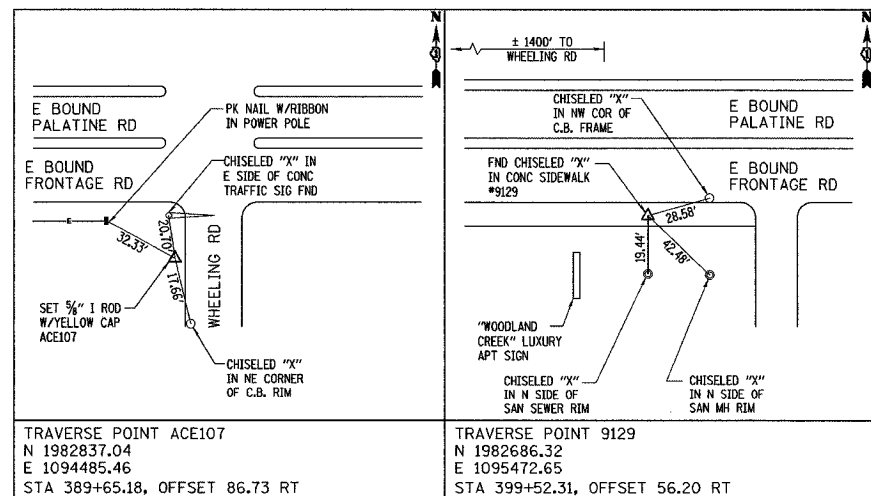
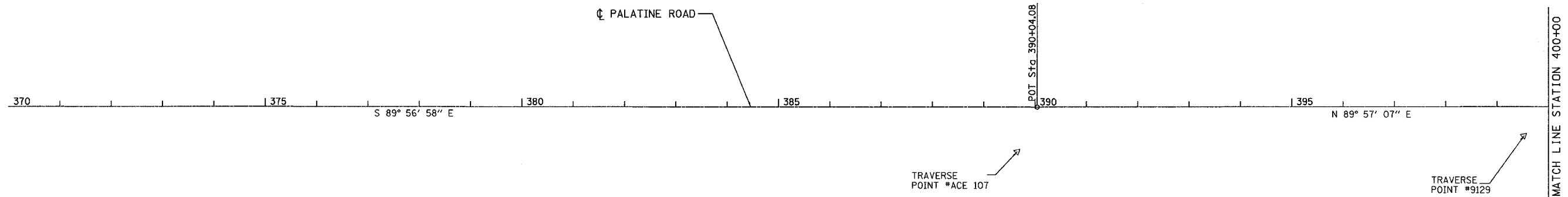


F.A.P. RTE.	SECTION	COUNTY	TOTAL SHEETS	SHEET NO.
305	2004-108 BR	COOK	72	11

CONTRACT NO. 62878

BENCHMARKS

- | | |
|--|--|
| <p>ACE5 SET RR SPIKE IN W. SIDE OF 1ST UTILITY POLE LOCATED NORTH OF HOLBROOK RD & ON THE EAST SIDE OF WHEELING RD +/- 900' N. OF PALATINE RD
ELEV = 663.12</p> <p>ACE6 SET RR SPIKE IN W. SIDE OF 2ND UTILITY POLE S. OF THE "WOODLAND CREEK" ENT. AND ON THE EAST SIDE OF WHEELING RD +/- 1500' S. OF PALATINE RD
ELEV = 653.63</p> <p>ACE7 SET RR SPIKE IN W. SIDE OF 1ST UTILITY POLE W. OF ELMHURST RD (RTE 93) & ALONG THE N. ROW OF COM ED'S TRANSMISSION TOWER EASEMENT
ELEV = 663.33</p> <p>ACE8 SET RR SPIKE IN W. SIDE OF 1ST UTILITY POLE S. OF KEILWORTH AVE AND ON THE EAST SIDE OF ELMHURST RD (RTE 83) & 1700' S. OF PALATINE RD
ELEV = 663.55</p> | <p>BM24P CHISELED "I" IN N.E. CORNER OF THE NORTH ABUT. OF THE WOLF RD BRIDGE OVER PALATINE RD
ELEV = 649.60</p> <p>BM11 CHISELED "X" IN N.W. BOLT OF "WOLF RD" EXIT SIGN LOCATED ON THE N. SIDE OF PALATINE RD & EAST OF WOLF RD
ELEV = 648.63</p> <p>BM11A CHISELED "X" IN S.E. BOLT OF FIRE HYDRANT LOCATED ON THE SOUTH SIDE OF THE W. BND FRONTAGE RD (OLD PALATINE RD) 5TH F.H. WEST OF MILWAUKEE AVE (RTE 21)
ELEV = 642.95</p> <p>BM11B CHISELED "X" IN S.W. BOLT OF FIRE HYDRANT LOCATED ON THE SOUTH SIDE OF THE W. BND FRONTAGE RD (OLD PALATINE RD) 2ND F.H. WEST OF MILWAUKEE AVE (RTE 21)
ELEV = 642.21</p> <p>ACE3 CHISELED "X" IN N.W. LY BONNET BOLT OF 1ST FIRE HYDRANT N. OF MESSNER DR & OF THE WEST SIDE OF WOLF RD +/- 1800' N. OF PALATINE RD
ELEV = 646.09</p> <p>ACE4 CHISELED "I" IN WEST END OF CONC RETAINING WALL W/ 24" CMP, 165' SOUTH OF THE SOUTH LINE OF "HARPER COLLEGE NORTH EAST CENTER" & ON THE EAST SIDE OF WOLF RD +/- 1800' <
ELEV = 647.67</p> |
|--|--|



REVISIONS	
NAME	DATE

ILLINOIS DEPARTMENT OF TRANSPORTATION
 PALATINE ROAD UNDER WCRR, UNDER W. FRONTAGE RD.,
 UNDER E. FRONTAGE RD. & UNDER WOLF RD.

**PALATINE ROAD
 ALIGNMENT AND TIE PLAN**

SCALE: 1"=100'
 DATE 02/05

DRAWN BY ACE/CAD
 CHECKED BY TAE

AMERICAN
 CONSULTING ENGINEERS

11-003 PALATINE-04.08.11-11-05 02/05/05 08:45:34 AM