

RTE.	SECTION	COUNTY	TOTAL SHEETS	SHEET NO
305	2004-108 BR	COOK	72	34
STA.		TO STA.		
FED. ROAD DIST. NO.		ILLINOIS	FED. AID PROJECT:	
CONTRACT NO. 62853				

NOTES FOR TEMPORARY TRAFFIC SIGNALS

- ALL CONTROL EQUIPMENT INCLUDING EMERGENCY PRE-EMPTION AND COMMUNICATION DEVICES FOR THE TEMPORARY TRAFFIC SIGNAL(S) SHALL BE FURNISHED BY THE CONTRACTOR.
- ONLY CONTROLLERS SUPPLIED BY ONE OF THE DISTRICT APPROVED CLOSED LOOP EQUIPMENT MANUFACTURERS WILL BE APPROVED FOR USE AT TEMPORARY SIGNAL LOCATIONS. ALL CONTROLLERS USED FOR TEMPORARY TRAFFIC SIGNALS SHALL BE FULLY ACTUATED NEMA MICROPROCESSOR BASED WITH RS232 DATA ENTRY PORTS COMPATIBLE WITH EXISTING MONITORING SOFTWARE APPROVED BY IDOT DISTRICT 1. INSTALLED IN A NEMA TS1 OR TS2 CABINET. ONLY ONE BRAND OF CONTROLLER WILL BE ACCEPTED FOR ANY ONE CONTRACT.
- ALL TRAFFIC SIGNAL SECTIONS AND PEDESTRIAN SIGNAL SECTIONS SHALL BE 12". HEADS SHALL BE PLACED AS INDICATED ON THE TEMPORARY TRAFFIC SIGNAL PLAN OR AS DIRECTED BY THE ENGINEER. THE CONTRACTOR SHALL FURNISH ENOUGH CABLE SLACK TO RELOCATE HEADS TO ANY POSITION ON THE SPAN WIRE OR AT LOCATIONS ILLUSTRATED ON THE PLANS FOR CONSTRUCTION STAGING. THE TEMPORARY TRAFFIC SIGNAL SHALL REMAIN IN OPERATION DURING ALL SIGNAL HEAD RELOCATIONS. EACH TEMPORARY TRAFFIC SIGNAL HEAD SHALL HAVE ITS OWN CABLE FROM THE CONTROLLER CABINET TO THE SIGNAL HEAD.
- ALL EXISTING STREET NAME AND INTERSECTION REGULATORY SIGNS SHALL BE REMOVED FROM EXISTING POLES, RELOCATED AND SECURELY FASTENED TO THE SIGNAL SPAN WIRE OR WOOD POLE AS DIRECTED BY THE ENGINEER.
- ANY TEMPORARY SIGNAL WITHIN AN EXISTING CLOSED LOOP TRAFFIC SIGNAL SYSTEM SHALL BE INTERCONNECTED TO THAT SYSTEM USING SIMILAR BRAND CONTROL EQUIPMENT.
- THE TEMPORARY TRAFFIC SIGNAL SHALL HAVE THE SIGNAL HEAD DISPLAYS, SIGNAL HEAD PLACEMENTS AND CONTROLLER PHASING MATCH THE EXISTING TRAFFIC SIGNAL, AT THE TIME OF THE TURN ON, IF NO TRAFFIC STAGING IS IN PLACE OR WILL NOT BE STAGED ON THE DAY OF THE TURN ON.

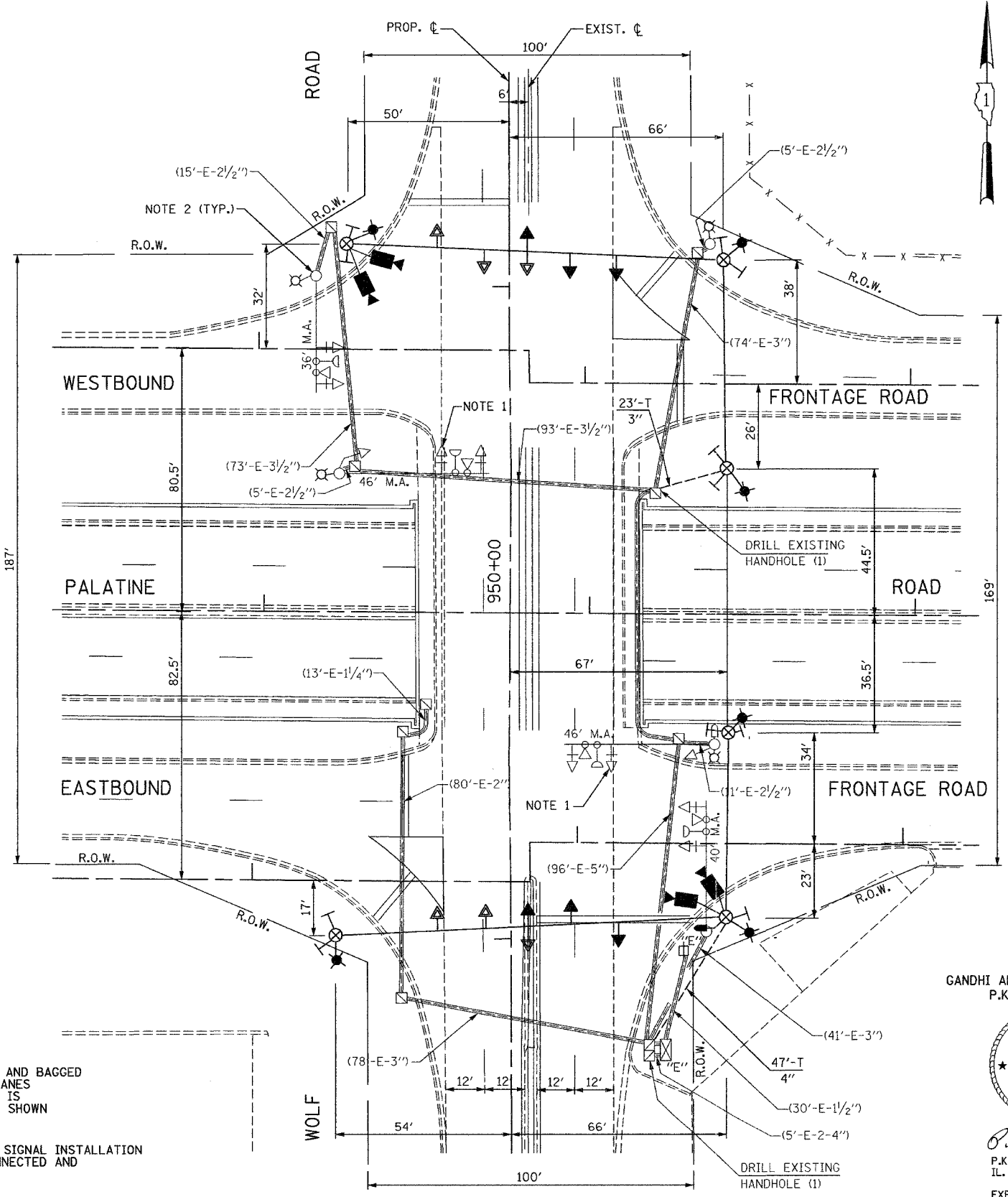
SPECIAL NOTE TO CONTRACTOR

THE EXISTING TRAFFIC SIGNAL CONTROLLER IS UTILIZED FOR TEMPORARY TRAFFIC SIGNAL INSTALLATION. THE SIGNAL HEADS NOT NEEDED DURING THE TEMPORARY TRAFFIC SIGNAL OPERATION SHALL BE DISCONNECTED AND BAGGED. UPON COMPLETION OF THE CONSTRUCTION ACTIVITIES, AND PRIOR TO REMOVAL OF THE TEMPORARY TRAFFIC SIGNAL INSTALLATION, ALL THE EXISTING TRAFFIC SIGNAL HEADS WHICH WERE DISCONNECTED AND BAGGED SHALL BE CONNECTED AND UNBAGGED AS DIRECTED BY THE ENGINEER. THIS WORK SHALL NOT BE PAID FOR SEPARATELY BUT SHALL BE CONSIDERED INCIDENTAL TO THE PAY ITEM "TEMPORARY TRAFFIC SIGNAL INSTALLATION".

THE EXISTING TRAFFIC SIGNAL CONTROLLER, SIGNALS, MAST ARMS, HANDHOLES AND APPURTENANCES UTILIZED FOR TEMPORARY SIGNAL INSTALLATION ARE SHOWN IN THE PLAN AND SHALL REMAIN IN PLACE.

PAYMENT FOR ALL WORK ON THIS SHEET IS INCLUDED IN THE COST OF "TEMPORARY TRAFFIC SIGNAL INSTALLATION"

- NOTE 1: THE EXISTING SIGNAL HEADS INDICATED WITH NOTE 1 SHALL BE DISCONNECTED AND BAGGED WHEN THE NORTHBOUND AND SOUTHBOUND TRAFFIC IS MOVED TO THE CENTER LANES ON THE BRIDGE. THEY SHALL BE CONNECTED AND UNBAGGED WHEN THE TRAFFIC IS MOVED TO THE OUTSIDE LANES ON THE BRIDGE. THIS WORK SHALL BE DONE AS SHOWN IN THE PLANS AND AS DIRECTED BY THE ENGINEER.
- NOTE 2: THE MAST ARMS AND SIGNAL HEADS NOT USED AS A PART OF THE TEMPORARY SIGNAL INSTALLATION ARE NOT SHOWN ON THE PLAN. THE SIGNAL HEADS NOT USED SHALL BE DISCONNECTED AND BAGGED AS DIRECTED BY THE ENGINEER.



TEMPORARY TRAFFIC SIGNAL LEGEND

- TEMPORARY TRAFFIC SIGNAL HEAD SPAN WIRE MOUNTED ORIGINAL LOCATION
- TEMPORARY TRAFFIC SIGNAL HEAD SPAN WIRE MOUNTED SECONDARY LOCATION
- TEMPORARY WOOD POLE (CLASS 5 OR BETTER) 26 FOOT MAXIMUM
- TEMPORARY CONTROLLER CABINET
- TEMPORARY SPAN WIRE, TETHER WIRE, AND CABLE
- TEMPORARY SERVICE INSTALLATION
- TEMPORARY PEDESTRIAN SIGNAL HEAD, BRACKET MOUNTED
- VIDEO CAMERA ASSEMBLY
- PEDESTRIAN PUSHBUTTON DETECTOR
- EMERGENCY VEHICLE LIGHT DETECTOR
- CONFIRMATION BEACON
- VEHICLE DETECTOR, INDUCTION LOOP
- COMMON TRENCH
- UNIT DUCT
- G.S. CONDUIT IN GROUND
- HANDHOLE
- HEAVY DUTY HANDHOLE
- TEMPORARY AVIATION RED OBSTRUCTION LIGHT
- TEMPORARY AVIATION PHOTOELECTRIC CONTROL

EXISTING TRAFFIC SIGNAL LEGEND

- EXISTING AVIATION RED OBSTRUCTION LIGHT
- EXISTING AVIATION PHOTOELECTRIC CONTROL
- EXISTING SIGNAL HEAD
- EXISTING SIGNAL HEAD WITH BACKPLATE
- EXISTING MAST ARM ASSEMBLY AND POLE, STEEL
- EXISTING HANDHOLE
- EXISTING DOUBLE HANDHOLE
- EXISTING GALVANIZED STEEL CONDUIT IN TRENCH OR PUSHED
- EXISTING EMERGENCY VEHICLE SYSTEM DETECTOR
- EXISTING CONFIRMATION BEACON
- EXISTING CONTROLLER
- EXISTING SERVICE INSTALLATION

GANDHI AND ASSOCIATES, INC.
P.K. GANDHI, P.E.



P.K. Gandhi
P.K. GANDHI, P.E.
IL. REG. NO. 062-34993
EXP. 11-30-2005
DATE 03-09-2005

ILLINOIS DEPARTMENT OF TRANSPORTATION
PALATINE ROAD: WISCONSIN CENTRAL RR TO
US 45/ILL 21 (Milwaukee Ave.)
TEMPORARY TRAFFIC SIGNAL PLAN
WOLF ROAD AT EAST AND WESTBOUND
FRONTAGE ROADS TO AND FROM PALATINE ROAD

REVISIONS	
NAME	DATE

SCALE: 1"=20'
DATE: 01/14/2005
DRAWN BY: JF/BC
DESIGNED BY: PKG/RRM
CHECKED BY: PKG/RRM

GO GANDHI AND ASSOCIATES, INC.
ENGINEERS AND PLANNERS
6035 N. NORTHWEST HIGHWAY
SUITE 306
CHICAGO, ILLINOIS 60630 TEL: (773) 774-5910