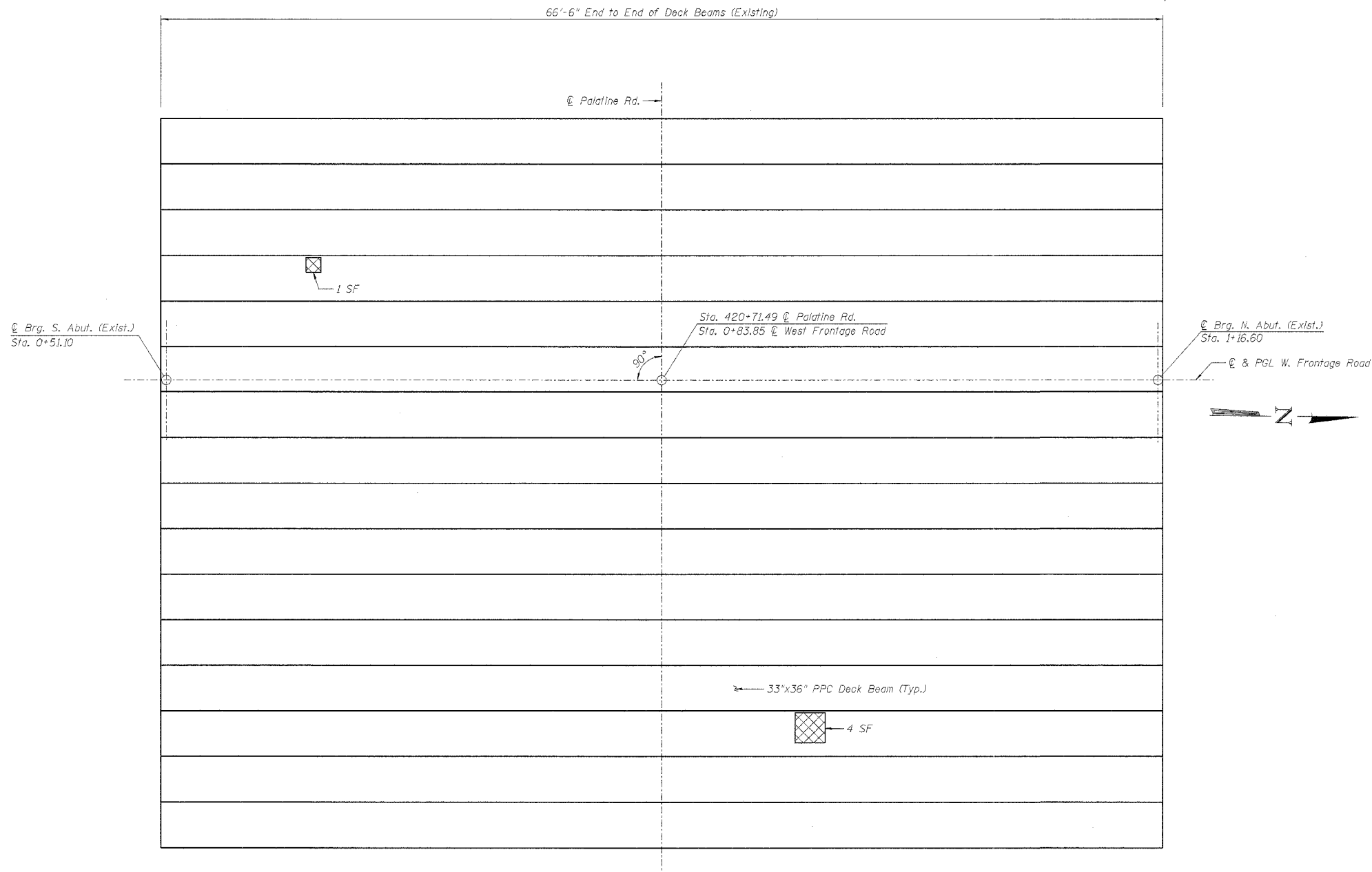


STATE OF ILLINOIS  
DEPARTMENT OF TRANSPORTATION

ROUTE NO.	SECTION	COUNTY	TOTAL SHEETS	SHEET NO.	SHEET NO. 4 6 SHEETS
S.R.S. P.A.P. 305	X	COOK	72	44	

\*2004-108 BR Contract No. 62853



PLAN OF CONCRETE DECK BEAM REPAIRS  
BOTTOM VIEW

NOTES  
Repair areas shown are the surveyed areas of deterioration.  
The actual area to be repaired shall be as directed by the Engineer.  
Variations in the quantities shall not be cause for additional compensation,  
however, the Contractor will be paid for the quantity actually furnished  
at the unit price bid for the work.

LEGEND  
Surveyed Area Showing Delamination  
on Bottom of Beam

BILL OF MATERIAL

Item	Unit	Quantity
Cleaning & Painting Exposed Rebar	Sq. Ft.	5

Survey Date: December 1992

BRANCO & ZROKA ENGINEERING, P.C.

DESIGNED	LAS
CHECKED	DAZ
DRAWN	SAW
CHECKED	LAS

February 2005

CONCRETE DECK BEAM REPAIRS II  
WEST FRONTAGE ROAD OVER PALATINE ROAD  
FAP 305/PALATINE ROAD  
SECTION 2004-108 BR  
COOK COUNTY  
STA. 0+88.97  
STRUCTURE NO. 016-2530