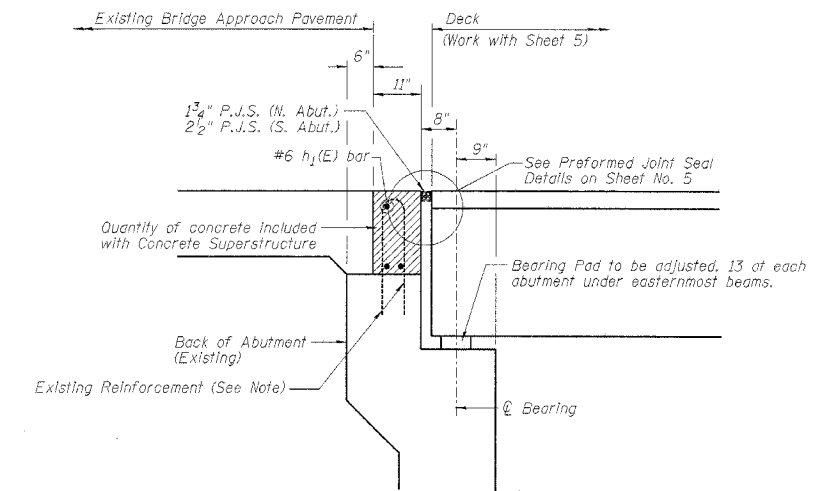
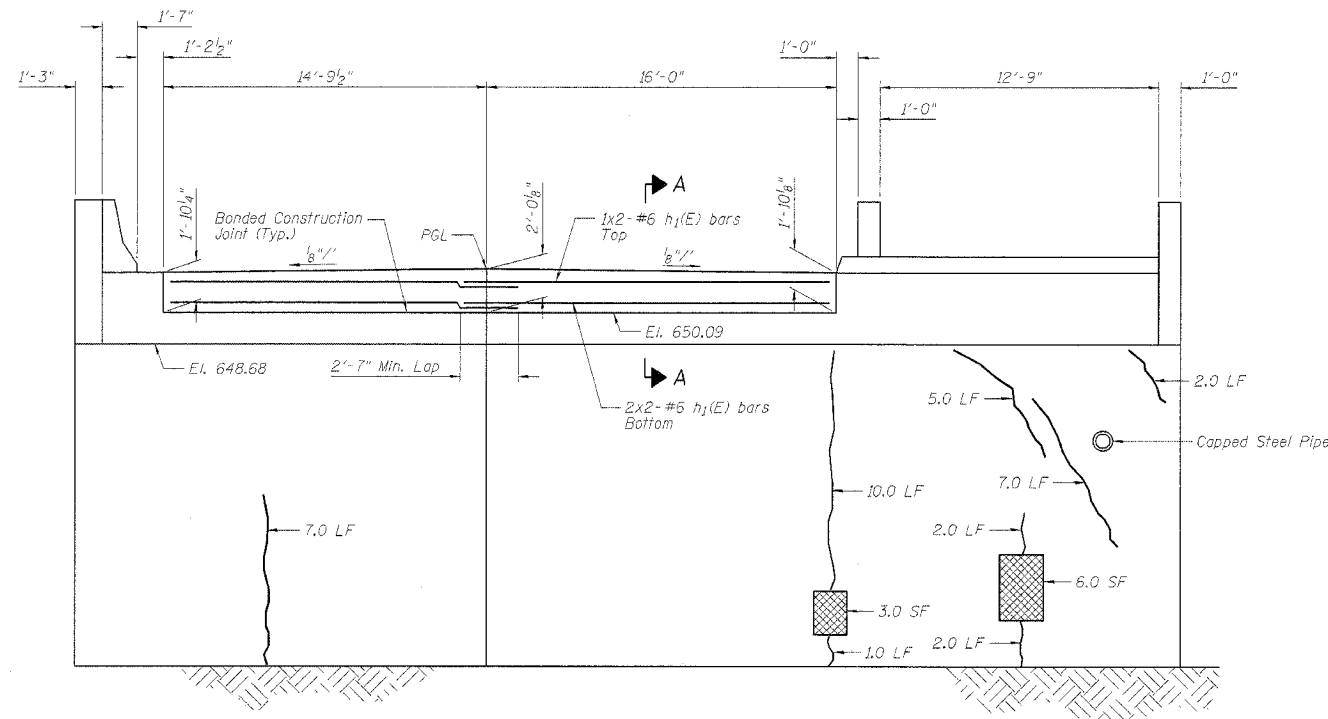


STATE OF ILLINOIS  
DEPARTMENT OF TRANSPORTATION

ROUTE NO.	SECTION	COUNTY	TOTAL SHEETS	SHEET NO.
S.R.L. P.A.P. 305	X	COOK	72	46

SHEET NO. 6  
6 SHEETS

\*2004-108 BR Contract No. 62853



SECTION A-A

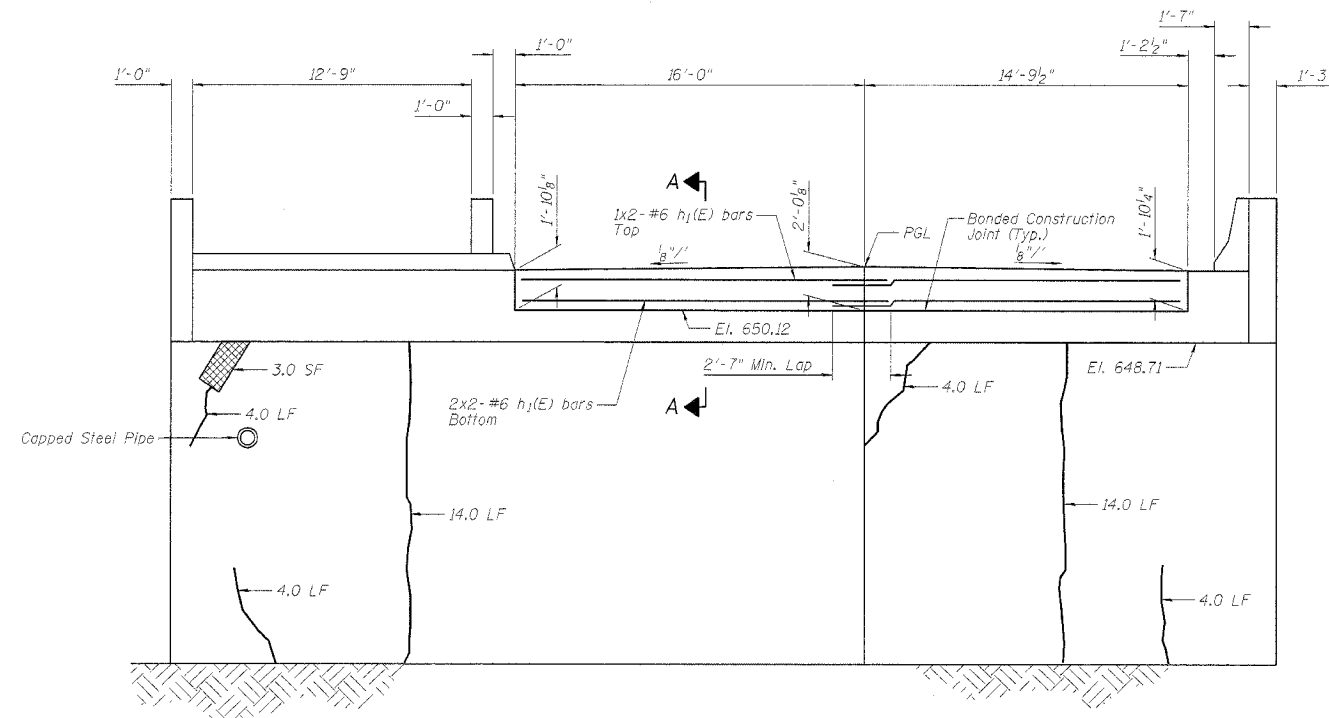
Existing Reinforcement extending into removed areas shall be blast cleaned, straightened and incorporated into new construction. Cost included with "Concrete Removal." Any reinforcement bars that are damaged during concrete removal shall be replaced with an approved bar splicer or anchorage system. Cost included with "Concrete Removal."

**LEGEND**

Surveyed Area Requiring Formed Concrete Repair (Depth < 5")

Surveyed Length Requiring Epoxy Crack Sealing

NORTH ABUTMENT ELEVATION



SOUTH ABUTMENT ELEVATION

BILL OF MATERIAL

Bar	No.	Size	Length	Shape
h1(E)	12	#6	16'-8"	—
Item		Unit	Quantity	
Concrete Superstructure		Cu. Yd.	4.0	
Epoxy Crack Sealing		Foot	120	
Reinforcement Bars, Epoxy Coated		Pound	300	
Formed Concrete Repair (Depth Equal to or Less Than 5")		Sq. Ft.	30	
Formed Concrete Repair (Depth Larger Than 5")		Sq. Ft.	10	

**NOTES**

Reinforcement bars designated (E) shall be epoxy coated.

Bars indicated thus: 1x2-#6 etc., indicates 1 line of bars with 2 lengths per line.

Survey Date: October 1992

Repair areas shown are the surveyed areas of deterioration. The actual area to be repaired shall be as directed by the Engineer.

Variations in the quantities shall not be cause for additional compensation, however, the Contractor will be paid for the quantity actually furnished at the unit price bid for the work.

ABUTMENT REPAIR  
WEST FRONTAGE ROAD OVER PALATINE ROAD  
FAP 305/PALATINE ROAD  
SECTION 2004-108 BR  
COOK COUNTY  
STA. 0+88.97  
STRUCTURE NO. 016-2530

BRANCO & ZROKA ENGINEERING, P.C.

DESIGNED	LAS
CHECKED	DAZ
DRAWN	SAW
CHECKED	LAS

February 2005