

STATE OF ILLINOIS
DEPARTMENT OF TRANSPORTATION

ROUTE NO.	SECTION	COUNTY	TOTAL SHEETS	SHEET NO.
S. R. 1.	F. A. P. 200	COOK	72	50

2004-108 BR Contract No. 62853

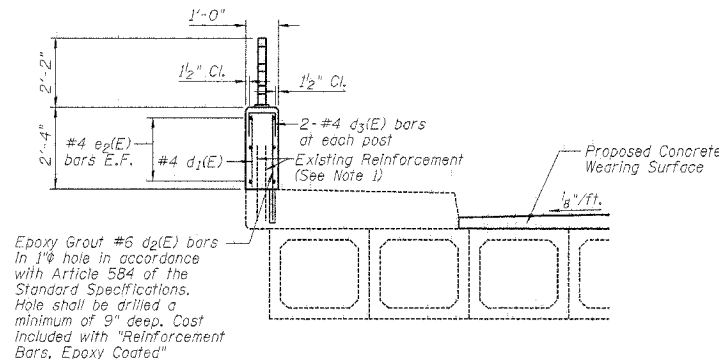
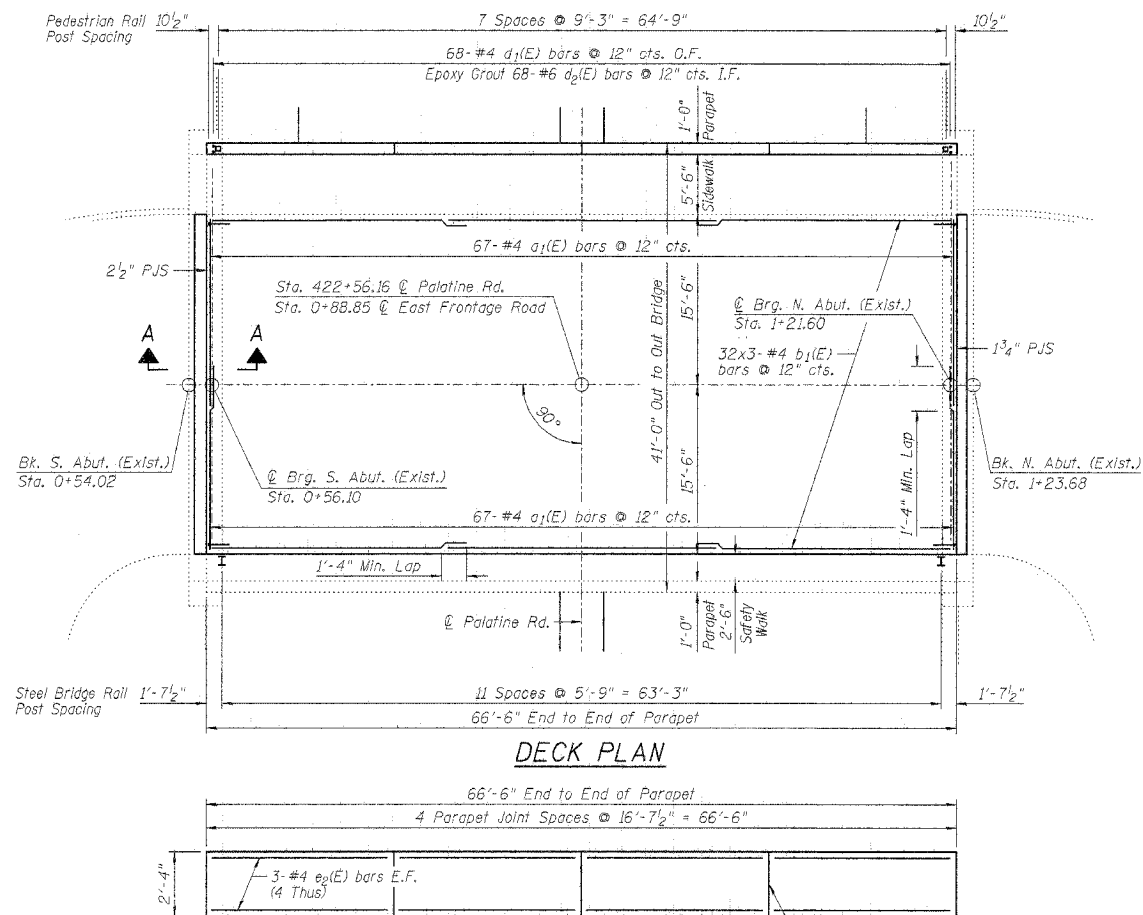
SHEET NO. 4
7 SHEETS

BILL OF MATERIAL

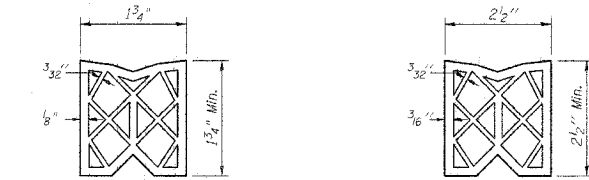
Bar No.	Size	Length	Shape
a ₁ (E)	#4	16'-0"	—
b ₁ (E)	#4	23'-0"	—
d ₁ (E)	#4	2'-1"	—
d ₂ (E)	#6	2'-11"	—
d ₃ (E)	#4	2'-0"	□
e ₂ (E)	#4	16'-3"	—

Item	Unit	Quantity
Preformed Joint Seal 1 3/4"	Foot	31
Preformed Joint Seal 2 1/2"	Foot	31
Bridge Deck Grooving	Sq. Yd.	215
Protective Coat	Sq. Yd.	255
Concrete Superstructure	Cu Yd	5.8
Reinforcement Bars, Epoxy Coated	Pound	3,590
Concrete Wearing Surface	Sq. Yd.	230
Furnishing and Erecting Structural Steel	Pound	1,631

Reinforcement bars designated (E) shall be epoxy coated

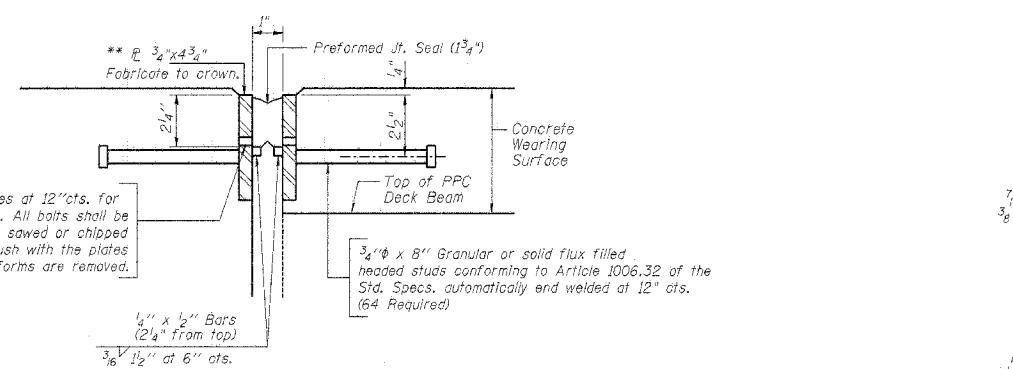


SECTION THRU PROPOSED PARAPET

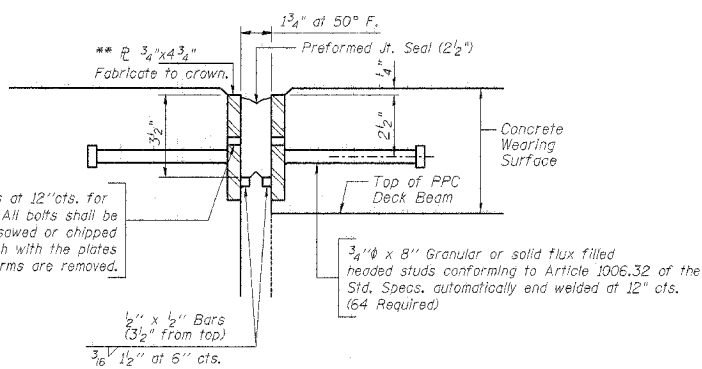


PREFORMED JOINT SEAL (1 3/4") PREFORMED JOINT SEAL (2 1/2")

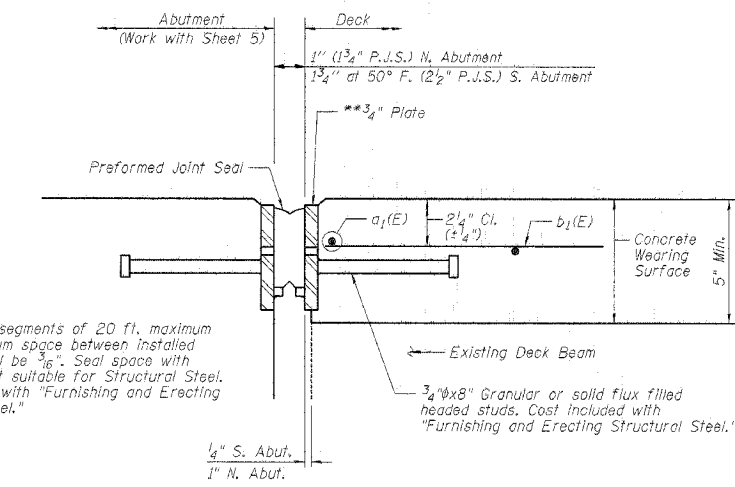
DEVELOPED ELEVATION THRU PARAPET



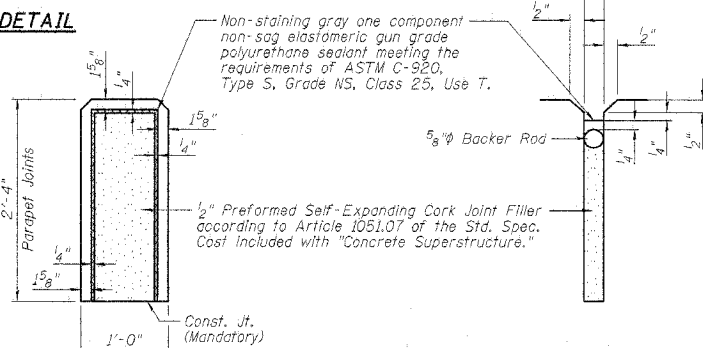
1 3/4" PREFORMED JOINT SEAL DETAIL



2 1/2" PREFORMED JOINT SEAL DETAIL



SECTION A-A
(2 1/2" PJS Shown, 1 3/4" PJS Similar)



PARAPET JOINT DETAILS

- NOTES:
- Existing Reinforcement extending into removed areas shall be blast cleaned, straightened and incorporated into new construction. Cost included with "Concrete Removal." Any reinforcement bars that are damaged during concrete removal shall be replaced with an approved bar splicer or anchorage system. Cost included with "Concrete Removal."
 - For Pedestrian Rail Details, see Sheet 6.
 - For Steel Bridge Rail Details, See Sheet 7.
 - Bars indicated thus: 32x3-#4 etc. indicates 32 lines of bars with 3 lengths per line.

BRANCO & ZROKA ENGINEERING, P.C.

DESIGNED	LAS
CHECKED	DAZ
DRAWN	SAW
CHECKED	LAS

February 2005

EXPANSION JOINT AND PARAPET DETAILS
EAST FRONTAGE ROAD OVER PALATINE ROAD
FAP 305/PALATINE ROAD
SECTION 2004-108 BR
COOK COUNTY
STA. 0+88.85
STRUCTURE NO. 016-2529