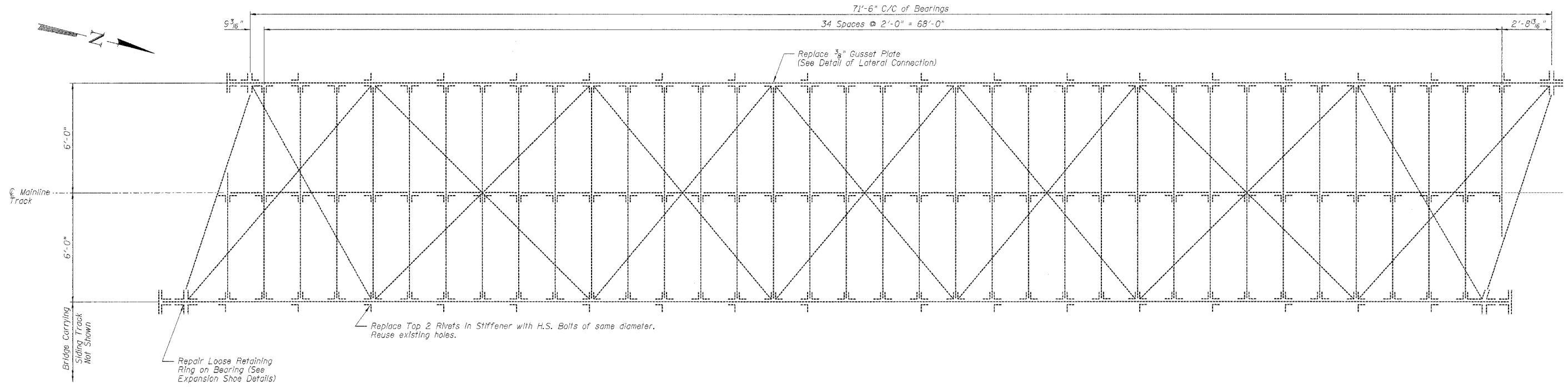


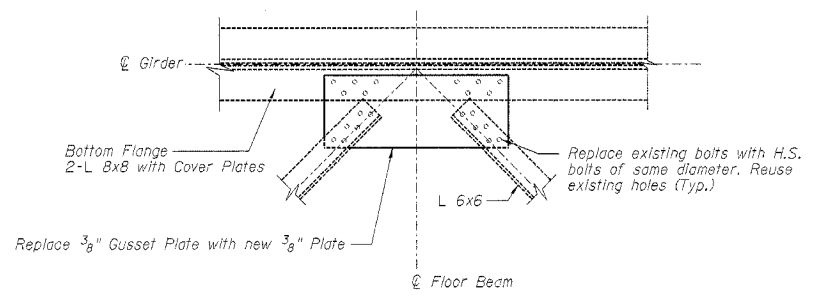
STATE OF ILLINOIS  
DEPARTMENT OF TRANSPORTATION

ROUTE NO.	SECTION	COUNTY	TOTAL SHEETS	SHEET NO.	SHEET NO. 3 5 SHEETS
P. A. P. 389	"	COOK	72	56	

\*2004-108 BR CONTRACT NO. 62853

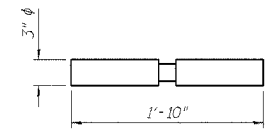


**FRAMING PLAN**  
(Only mainline railroad bridge shown for clarity)

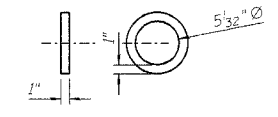


**DETAIL OF LATERAL CONNECTION**

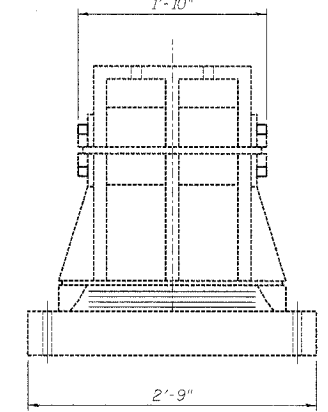
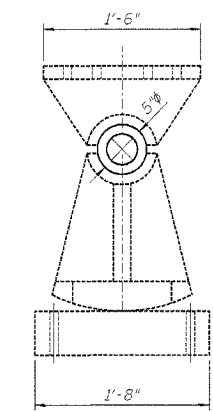
It is the Contractor's responsibility to take measurements in the field of the existing structure wherever new steel is to be replaced or connected into the existing material prior to ordering or fabricating any new steel. Existing connectors are either rivets or bolts, 7/8" φ per existing plans. Where connectors are to be replaced with H.S. bolts, the Contractor shall field verify the connector diameter, gage, and spacing and shall replace the connectors with H.S. bolts of the same diameter. The Contractor shall be responsible for the proper fitting and assembly of all parts of the work.



**PIN**



**RING**



**EXPANSION SHOE DETAILS**

NOTE:  
Expansion Shoe details shown for information only. Inside retaining ring on southeast bearing is loose. Approximately 3/4" of the ring is not touching the shoe. Reposition ring back on shoe and weld to top shoe using 4-1/2" long welds (3/16" fillets). Cost included with Structural Steel Repair.

**BILL OF MATERIAL**

Item	Unit	Quantity
Structural Steel Repair	Pound	100

**FRAMING PLAN & BEARING REPAIR DETAILS**  
WISCONSIN CENTRAL RAILROAD  
OVER PALATINE ROAD  
FAP 305/PALATINE ROAD  
SECTION 2004-108 BR  
COOK COUNTY  
STA. 421+68.70  
STRUCTURE NO. 016-2025

BRANCO & ZROKA ENGINEERING, P.C.

DESIGNED	LAS
CHECKED	DAZ
DRAWN	SAW
CHECKED	LAS

February 2005