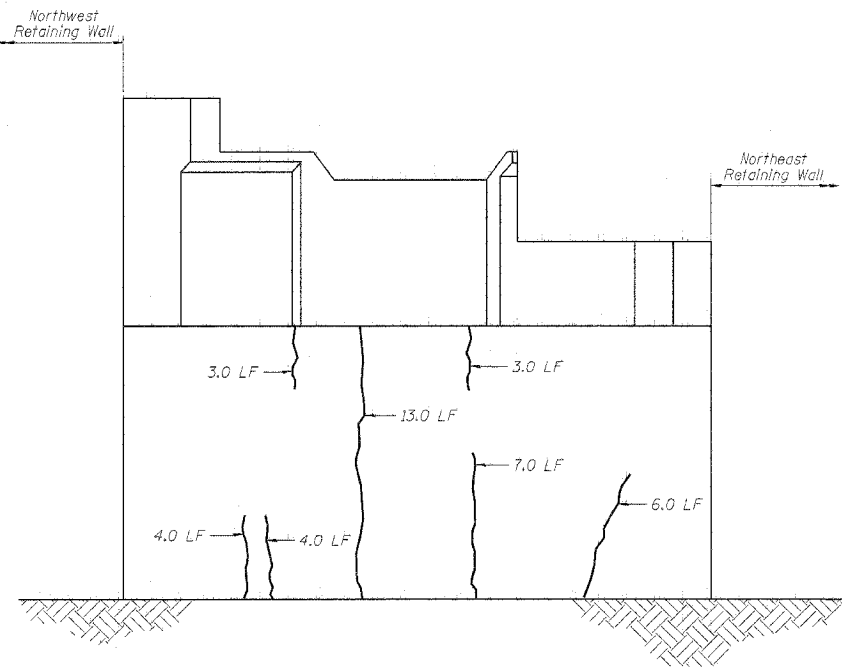


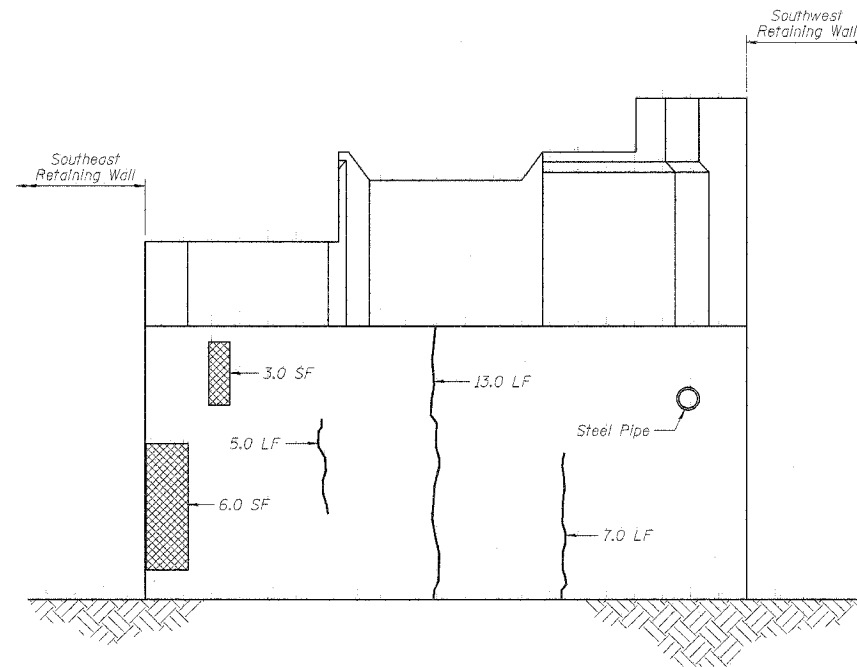
STATE OF ILLINOIS
DEPARTMENT OF TRANSPORTATION

ROUTE NO.	SECTION	COUNTY	TOTAL SHEETS	SHEET NO.	SHEET NO. 4 5 SHEETS
S. N. I. P. A. P. 388	X	COOK	72	57	

*2004-108 BR CONTRACT NO. 62853



NORTH ABUTMENT MAINLINE TRACK ELEVATION



SOUTH ABUTMENT MAINLINE TRACK ELEVATION

LEGEND

- Surveyed Area Requiring Formed Concrete Repair (Depth $\leq 5"$)
- Surveyed Length Requiring Epoxy Crack Sealing

BILL OF MATERIAL

Item	Unit	Quantity
Epoxy Crack Sealing	Foot	100
Formed Concrete Repair (Depth Equal to or Less Than 5")	Sq. Ft.	20
Formed Concrete Repair (Depth Larger Than 5")	Sq. Ft.	5

NOTES

Repair areas shown are the surveyed areas of deterioration. The actual area to be repaired shall be as directed by the Engineer.

Variations in the quantities shall not be cause for additional compensation, however, the Contractor will be paid for the quantity actually furnished at the unit price bid for the work.

Survey date: October 1992

BRANCO & ZROKA ENGINEERING, P.C.

DESIGNED	LAS
CHECKED	DAZ
DRAWN	SAW
CHECKED	LAS

February 2005

ABUTMENT REPAIR DETAILS
WISCONSIN CENTRAL RAILROAD
OVER PALATINE ROAD
FAP 305/PALATINE ROAD
SECTION 2004-108 BR
COOK COUNTY
STA. 421+68.70
STRUCTURE NO. 016-2025