

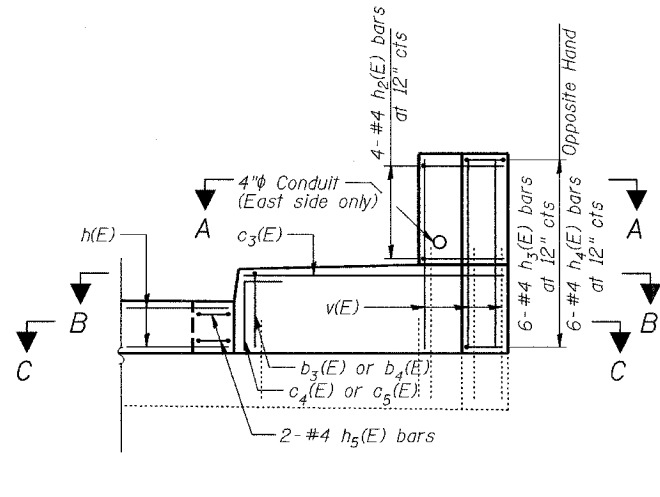
BILL OF MATERIAL

| Bar | No. | Size | Length | Shape |
|----------------------------------|-----|-------|----------|-------|
| c ₃ (E) | 8 | #5 | 7'-0" | — |
| c ₄ (E) | 4 | #5 | 2'-10" | — |
| c ₅ (E) | 4 | #5 | 2'-6" | — |
| b ₃ (E) | 10 | #5 | 4'-9" | — |
| b ₄ (E) | 10 | #5 | 4'-1" | — |
| h(E) | 12 | #6 | 14'-8" | — |
| h ₁ (E) | 6 | #6 | 27'-8" | — |
| h ₂ (E) | 16 | #4 | 5'-3" | — |
| h ₃ (E) | 12 | #4 | 7'-3" | — |
| h ₄ (E) | 12 | #4 | 5'-11" | — |
| h ₅ (E) | 8 | #4 | 4'-7" | — |
| v(E) | 20 | #6 | 5'-0" | — |
| Item | | Unit | Quantity | |
| Concrete Superstructure | | Cu Yd | 12.7 | |
| Reinforcement Bars, Epoxy Coated | | Pound | 1,030 | |
| Bar Splicers | | Each | 12 | |

Reinforcement bars designated (E) shall be Epoxy Coated.

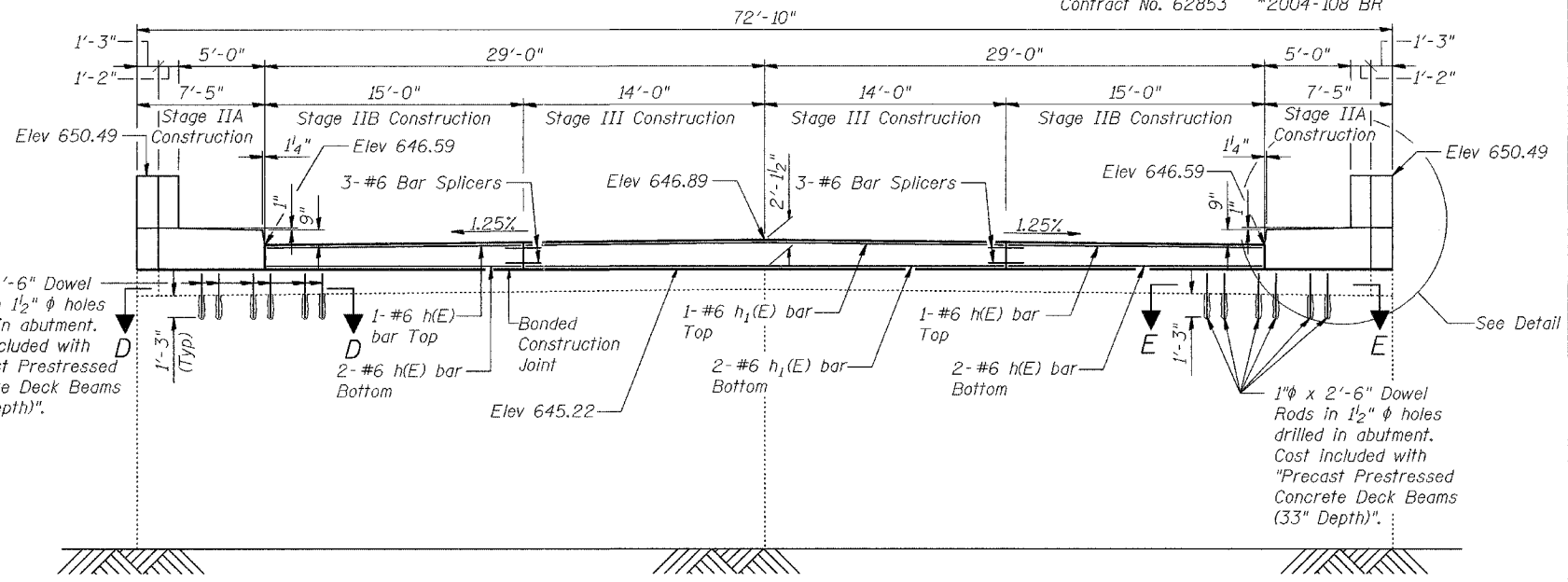
STATE OF ILLINOIS
DEPARTMENT OF TRANSPORTATION

| | | | | | |
|---------------------------------|---------|----------|-------------------|-------|--------------|
| ROUTE NO. | SECTION | COUNTY | SHEET NO. | SHEET | SHEET NO. 13 |
| FAP 305 | * | Cook | 72 | 71 | 14 SHEETS |
| FED. ROAD DIST. NO. 7 | | ILLINOIS | FED. AID PROJECT- | | |
| Contract No. 62853 *2004-108 BR | | | | | |

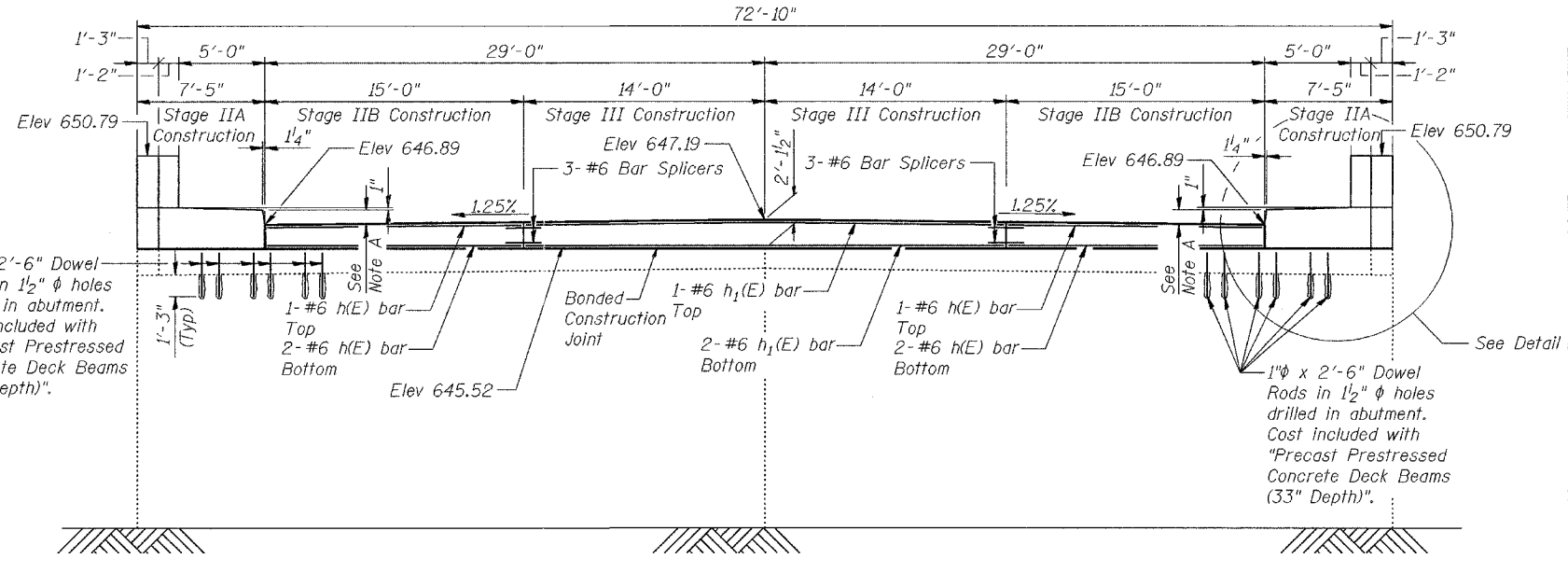


DETAIL

1" x 2'-6" Dowel Rods in 1/2" holes drilled in abutment. Cost included with "Precast Prestressed Concrete Deck Beams (33" Depth)".



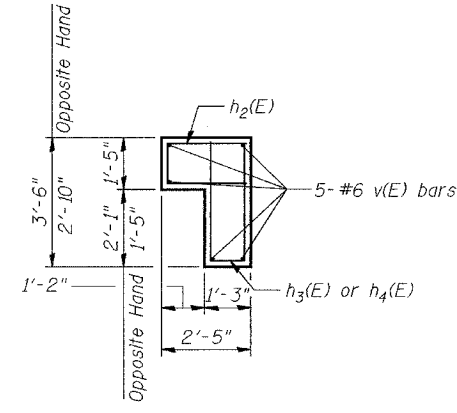
NORTH ABUTMENT ELEVATION
(Looking North)



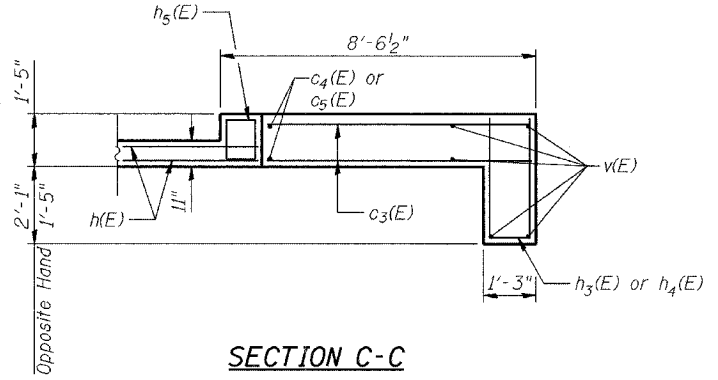
SOUTH ABUTMENT ELEVATION
(Looking South)

Note A: Varies from 5" @ Sta 949+64.58 to 6 1/2" @ Sta 949+66.0

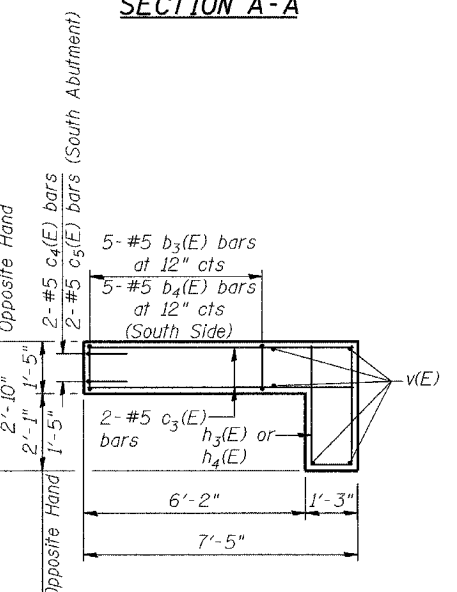
Note:
For section thru Hatch Block See Sheet 6



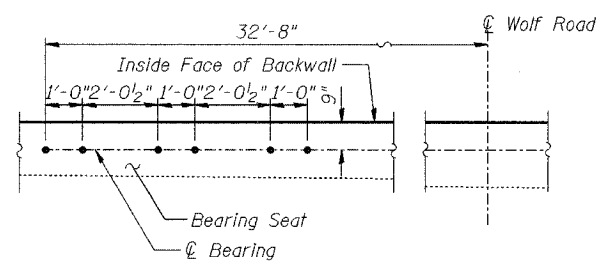
SECTION A-A



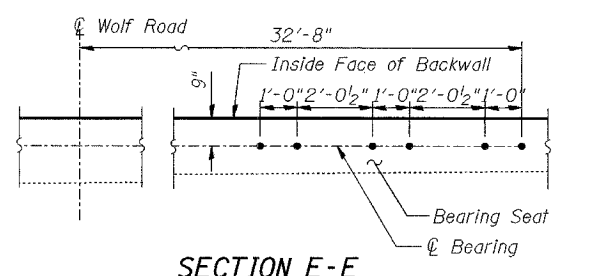
SECTION C-C



SECTION B-B



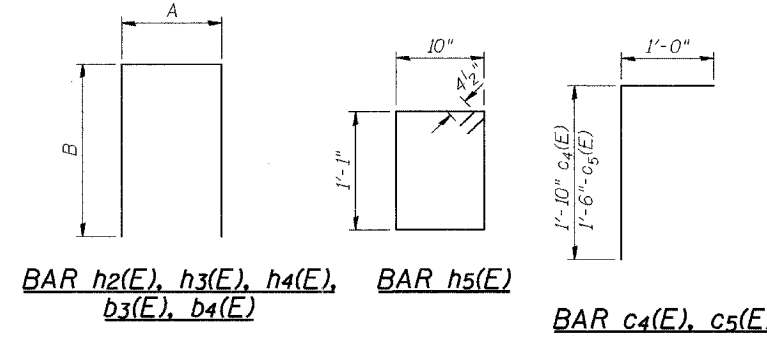
SECTION D-D
(South Abutment similar)



SECTION E-E
(South Abutment similar)

BAR DIMENSIONS

| Bar Name | A | B |
|--------------------|-------|--------|
| h ₂ (E) | 1'-1" | 2'-1" |
| h ₃ (E) | 11" | 3'-2" |
| h ₄ (E) | 11" | 2'-6" |
| b ₃ (E) | 1'-1" | 1'-10" |
| b ₄ (E) | 1'-1" | 1'-6" |



| | |
|----------|-----|
| DESIGNED | BPS |
| CHECKED | KFA |
| DRAWN | BPS |
| CHECKED | GSP |

ABUTMENTS
WOLF RD. OVER PALATINE RD.
F.A.P. RTE. 305 SECT. 2004-108 BR
COOK COUNTY
STATION
STRUCTURE NO. 016-0680