

TRAFFIC DATA

LOC. 1
I-94
 SPEED LIMIT = 55 MPH
 2001 ADT = 18,550
FAP 341
 SPEED LIMIT = 55 MPH
 2001 ADT = 18,550

LOC. 2
FAP 341
 SPEED LIMIT = 45 MPH
 1997 ADT = 5,009
STONEY ISLAND
 SPEED LIMIT = 45 MPH
 1998 ADT = 44,000

LOC. 3
 SPEED LIMIT = 45 MPH
 2001 ADT = 18,550
STONEY ISLAND
 SPEED LIMIT = 45 MPH
 1998 ADT = 44,000

LOC. 4
FAP 341
 SPEED LIMIT = 45 MPH
 2001 ADT = 37,100

LOC. 5
FAP 341
 SPEED LIMIT = 55 MPH
 1998 ADT = 22,000
103RD ST
 SPEED LIMIT = 35 MPH
 2002 ADT = 25,500

LOC. 6
FAP 341
 SPEED LIMIT = 55 MPH
 1998 ADT = 22,000
103RD ST
 SPEED LIMIT = 35 MPH
 2002 ADT = 25,500

ROUTE	SECTION	COUNTY	TOTAL SHEETS	SHEET NUMBER
FAP 341	2004-114BR	COOK	17	4

CONTRACT NO. 62870

IMPROVEMENT AT LOC. 1: SN 016-2436
 100TH ST OFF RAMP OVER I-94 (CALUMET EXPWY)

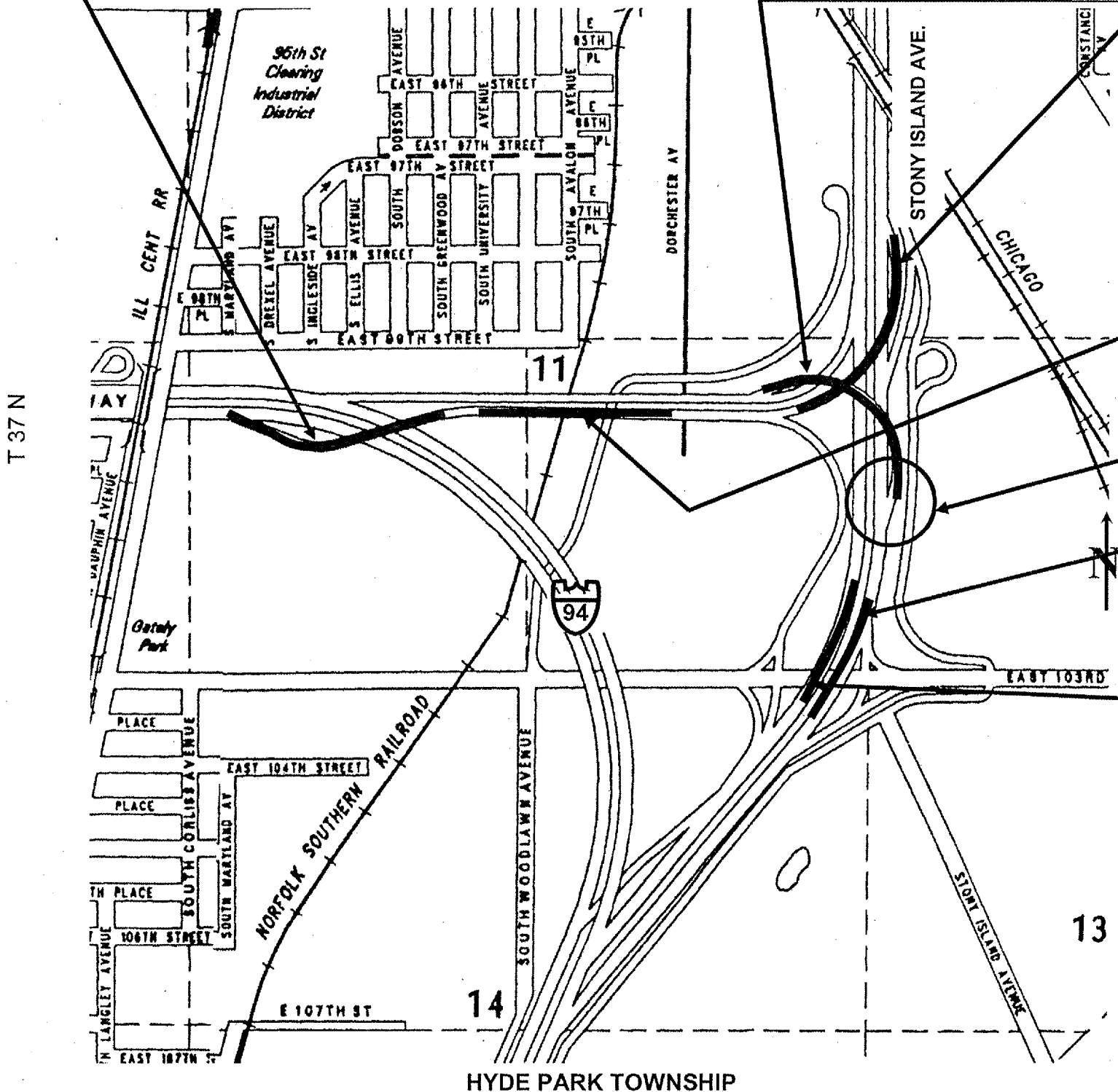
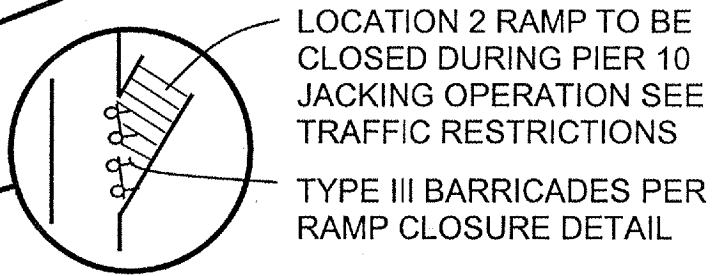
IMPROVEMENT AT LOC. 2: SN 016-2437
 STONEY NB TO 100TH ST WB OVER STONEY ISLAND AVE

IMPROVEMENT AT LOC. 3: SN 016-2438
 EB 100TH ST TO NB STONEY OVER STONEY ISLAND AVE

IMPROVEMENT AT LOC. 4: SN 016-2439
 100TH ST OVER ACCESS RD

IMPROVEMENT AT LOC. 5: SN 016-2441
 STONEY ISLAND NB OVER 103RD ST

IMPROVEMENT AT LOC. 6: SN 016-2442
 STONEY ISLAND OVER 103RD ST



ILLINOIS DEPARTMENT OF TRANSPORTATION
 LOCATION MAP