

F.A. RTE.	SECTION	COUNTY	TOTAL SHEETS	SHEET NO.
	2004-115SG	VARIOUS	30	1

D-91-048-05

STATE OF ILLINOIS
DEPARTMENT OF TRANSPORTATION
DIVISION OF HIGHWAYS

**PROPOSED
HIGHWAY PLANS**

VARIOUS ROUTES:

- (1) FAP ROUTE 0334-US 12/ILL. 59 @ ILL. 176
- (2) FAP ROUTE 334 - ILL. 83 @ I-290
- (3) FAU ROUTE 2898 (I-94 EDENS) DEMPSTER STREET - DUNDEE ROAD
- (4) FAI ROUTE 94 I-90/94 @ IRVING PARK ROAD

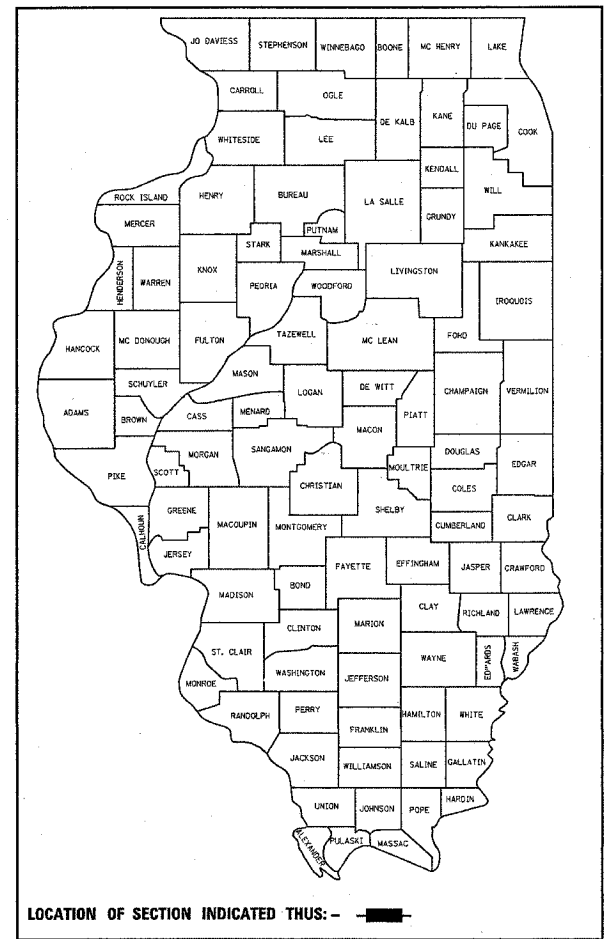
SECTION NUMBER:

2004-115SG

VARIOUS COUNTIES:

LAKE, COOK AND DUPAGE

C-91-048-05

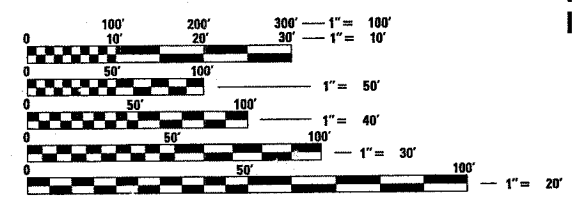


FOR INDEX OF SHEETS, SEE SHEET NO.

- 1. TITLE SHEET
- 2. SUMMARY OF QUANTITIES
- 3. I-90/94 SIGNING STRIP MAP
- 4. I-90/94 SIGN PANEL DETAIL SHEET
- 5. US 12/ILL. 59 @ 176 SIGNING STRIP MAP
- 6. US 12/ILL. 59 @ 176 SIGN PANEL DETAIL
- 7-8 ILL. 83 @ I-290 SIGNING STRIP MAPS
- 9-11 ILL. 83 @ I-290 SIGN PANEL DETAIL SHEETS
- 12-21 I-94 (EDENS) DEMPSTER - DUNDEE SIGNING STRIP MAPS
- 22-29 I-94 (EDENS) DEMPSTER - DUNDEE SIGN PANEL DETAIL SHEETS
- 29A. TRAFFIC CONTROL DETAILS FOR SHOULDER CLOSURES AND PARTIAL RAMP CLOSURES (TC-17)

STANDARD DRAWINGS

- 701400⁰²
 - 701401⁰³
 - 701446
 - 701101⁰¹
 - 701411⁰³
- NOTE: STANDARD DRAWINGS REQUIRED (CIRCLED) 720021-01

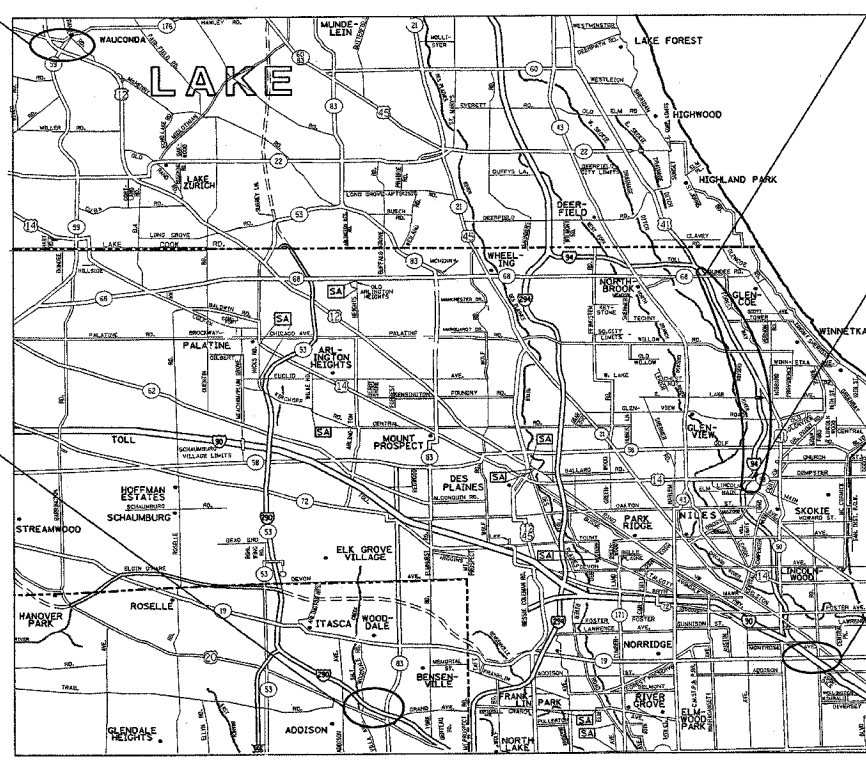


FULL SIZE PLANS HAVE BEEN PREPARED USING STANDARD ENGINEERING SCALES. REDUCED SIZED PLANS WILL NOT CONFORM TO STANDARD SCALES. IN MAKING MEASUREMENTS ON REDUCED PLANS, THE ABOVE SCALES MAY BE USED.

J.U.L.I.E.
JOINT UTILITY LOCATION INFORMATION FOR EXCAVATION
1-800-892-0123

US 12 @
ILL. 176

I-290 @
ILL. 83



I-94 DEMPSTER TO DUNDEE
PROJECT ENDS

PROJECT BEGINS

I-90/94 @
IRVING PARK RD.

STATE OF ILLINOIS
DEPARTMENT OF TRANSPORTATION
DIVISION OF HIGHWAYS

SUBMITTED Feb 10, 2005
Deanne M. O'Keefe
DEPUTY DIRECTOR OF HIGHWAYS, REGION ENGINEER

March 25, 2005
Mike Hine
ENGINEER OF DESIGN AND ENVIRONMENT

March 25, 2005
Vinton Mader
DIRECTOR OF HIGHWAYS, CHIEF ENGINEER

**PRINTED BY THE AUTHORITY
OF THE STATE OF ILLINOIS**

CONTRACT NO. 62871

BUREAU OF TRAFFIC, TERRY RAMMACHER / DARYLE DREW (847) 705-4420