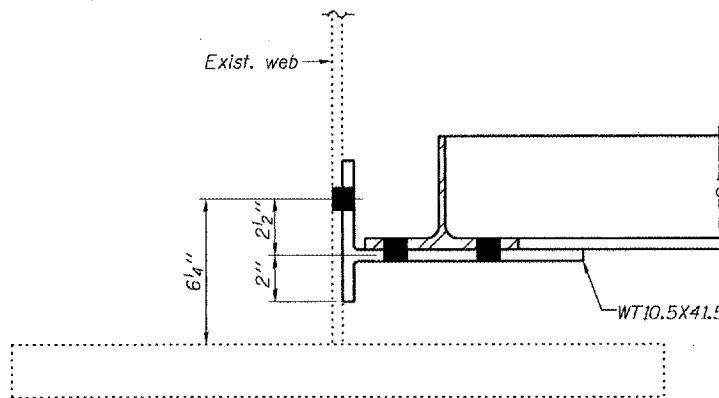
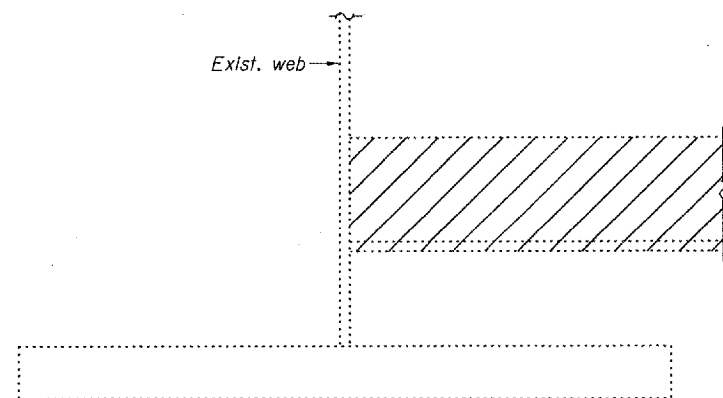


STATE OF ILLINOIS
DEPARTMENT OF TRANSPORTATION

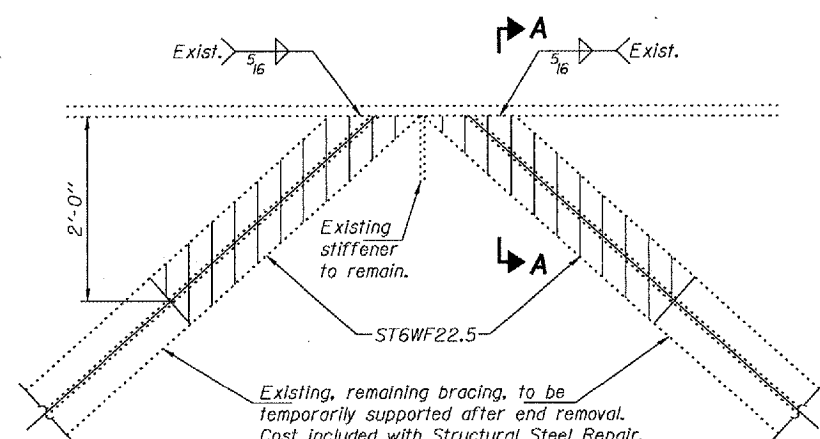
ROUTE NO.	SECTION	COUNTY	TOTAL SHEETS	SHEET NO.
		COOK	8	5
FED. ROAD DIST. NO. 7	ILLINOIS	FED. AID PROJECT		

SHEET NO. 2
2 SHEETS

Contract No. 62879



SECTION A-A

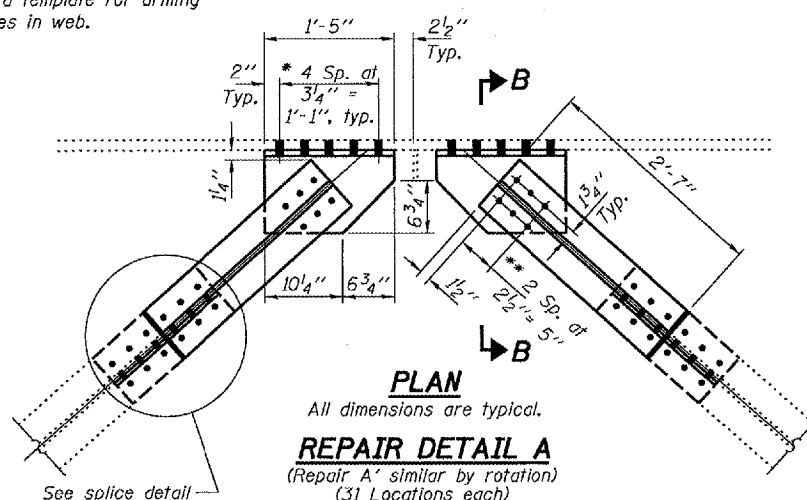


PLAN

Hatched areas indicate removal.

* Use holes in WT section as a template for drilling holes in web.

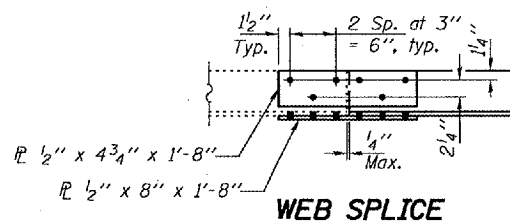
SECTION B-B



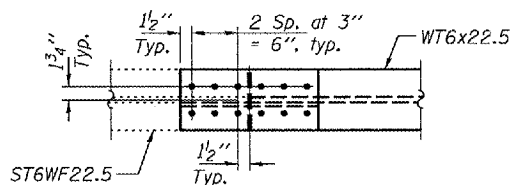
PLAN

All dimensions are typical.
REPAIR DETAIL A
(Repair A' similar by rotation)
(31 Locations each)

** Use holes in WT6X22.5 section as a template for drilling holes in web of WT10.5X41.5 section.



WEB SPLICE



FLANGE SPLICE

SPLICE DETAIL

Use holes in splice R's as a template for drilling holes in ST6WF22.5.

Procedure for Repair Detail

1. Remove existing sections of ST6WF22.5 as shown. The minimum distance from cut to face of web shall be the larger of 4" or web to ST section weld size, with removal of remaining material by grinding as described below. The cut shall be made parallel to the web without angling the cut towards the web. Equipment and method of cutting shall be approved by the Engineer. Any method of removal to be used shall ensure that no damage is done to the existing web, vertical stiffener or welds connecting these elements. Cutting shall be done in a manner such that the paint on the opposite face of the web is not damaged. If damage occurs, the damaged area shall be repainted at the contractor's expense and procedures shall be modified to prevent damage at subsequent removal locations.
2. Remove material between cut and web by grinding and grind smooth at web surface. Web plate surfaces shall have a roughness average (Ra) of 250µ in. or less. Grinding equipment shall be approved by the Engineer. The grinding operation should not gouge the girder web fl.
3. The web surface at the modification shall be inspected using dye penetrant or magnetic particle methods. Any cracks found shall be identified and reported to the Bureau of Bridges and Structures for further disposition.
4. Existing structural steel that will be in contact with new structural steel shall be cleaned and painted prior to erection as required by the Special Provision "Cleaning and Painting Contact Surface Areas of Existing Steel Structures".

Notes:

All structural steel shall conform to AASHTO Classification M-270 Gr. 36, unless otherwise noted.
Fasteners shall be high strength bolts. Bolts 3/4"φ, open holes 13/16"φ, unless otherwise noted.

DESIGNED	VHV
CHECKED	DAB
DRAWN	baliva
CHECKED	VHV DAB

MARCH 15, 2005
EXAMINED *John A. Morris*
ENGINEER OF STRUCTURAL SERVICES
PASSED *Ralph E. Anderson*
ENGINEER OF BRIDGES AND STRUCTURES

REPAIR DETAILS
MILWAUKEE AVE. OVER KENNEDY EXP.
COOK COUNTY
SN 016-2045