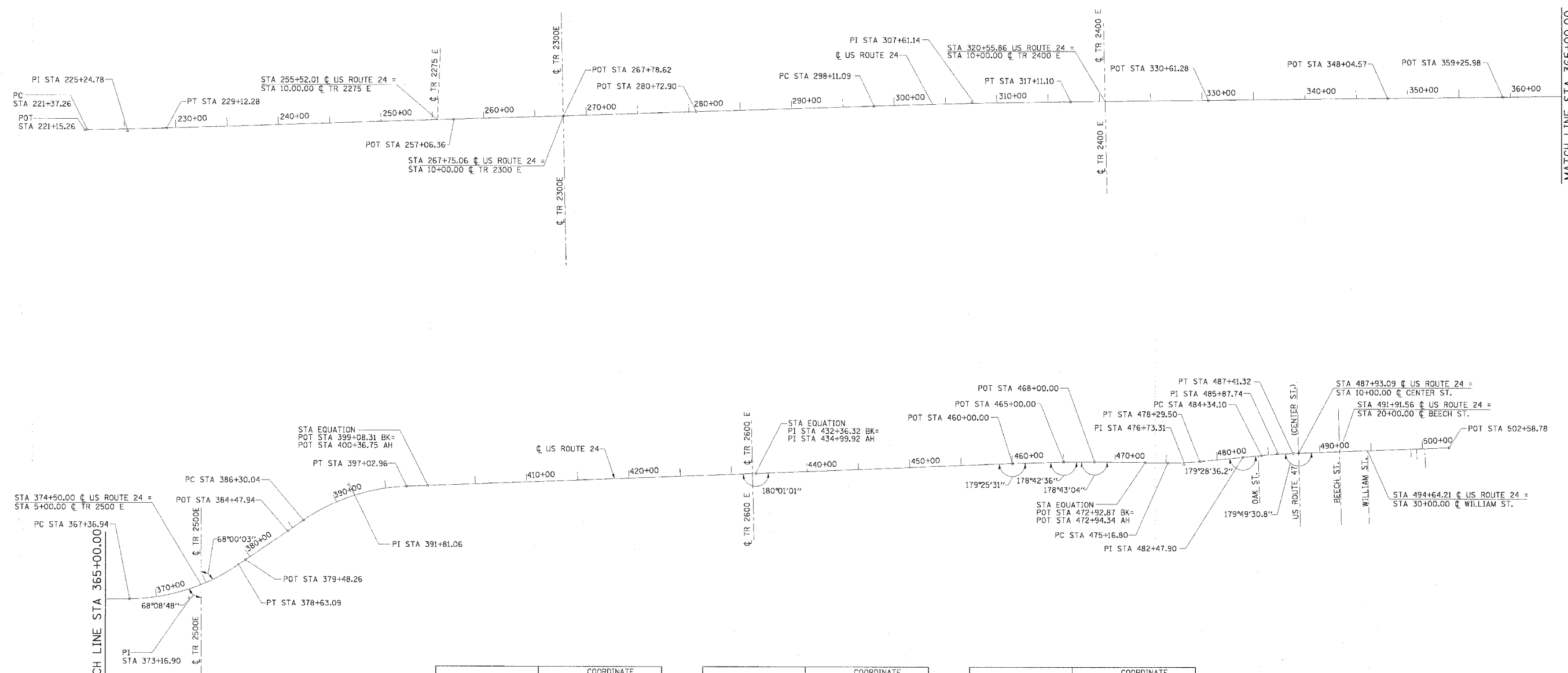


F.A.P. RTE.	SECTION	COUNTY	TOTAL SHEETS	SHEET NO.
317		LIVINGSTON	205	24
STA. 221+15.26 TO STA. 502+58.78			CONTRACT NO. 66261	
• 25 RS-2 & 26 RS-4				

EXISTING CURVE C1EX	EXISTING CURVE C2EX	EXISTING CURVE C3E	EXISTING CURVE C4E	EXISTING CURVE E_US24-1	EXISTING CURVE E_US24-2
PI STA = 225+24.78 Δ = 1° 02' 06" (LT) D = 0° 08' 01" R = 42,907.16' T = 387.52' L = 775.02' E = 1.75' PC STA = 221+37.26 PT STA = 229+12.28	PI STA = 307+61.14 Δ = 1° 16' 16" (RT) D = 0° 04' 01" R = 85,637.71' T = 950.04' L = 1,900.01' E = 5.27' PC STA = 298+11.09 PT STA = 317+11.10	PI STA = 373+16.90 Δ = 33° 46' 10" (LT) D = 2° 59' 55" R = 1,910.71' T = 579.96' L = 1,126.15' E = 86.08' PC STA = 367+36.94 PT STA = 378+63.09	PI STA = 391+81.06 Δ = 32° 10' 41" (RT) D = 2° 59' 57" R = 1,910.43' T = 551.02' L = 1,072.92' E = 77.88' PC STA = 386+30.04 PT STA = 397+02.96	PI STA = 476+73.31 Δ = 6° 23' 04" (LT) D = 2° 02' 30" R = 2,806.29' T = 156.51' L = 312.70' E = 4.36' PC STA = 475+16.80 PT STA = 478+29.50	PI STA = 485+87.74 Δ = 2° 52' 01" (RT) D = 0° 55' 59" R = 6,139.96' T = 153.64' L = 307.21' E = 1.92' PC STA = 484+34.10 PT STA = 487+41.32



MATCH LINE STA 365+00.00

MATCH LINE STA 365+00.00



DESCRIPTION	COORDINATE	
	NORTH	EAST
POT STA 221+15.25	1484950.55	936836.29
PC STA 221+37.26	1484950.90	936858.28
PI STA 225+24.78	1484957.03	937245.76
PT STA 229+12.27	1484970.15	937633.05
POT STA 257+06.36	1485064.57	940425.55
POT STA 267+78.61	1485100.71	941497.19
POT STA 280+72.90	1485144.59	942790.73
PC STA 298+11.09	1485203.60	944527.92
PI STA 307+61.14	1485235.82	945477.42
PT STA 317+11.10	1485246.97	946427.40
POT STA 330+61.28	1485262.51	947777.48
POT STA 348+04.57	1485283.06	949520.65

DESCRIPTION	COORDINATE	
	NORTH	EAST
POT STA 359+25.98	1485296.31	950641.98
PC STA 367+36.93	1485305.80	951452.89
PI STA 373+16.89	1485312.59	952032.81
PT STA 378+63.08	1485640.58	952511.11
POT STA 379+48.26	1485688.75	952581.35
POT STA 384+47.94	1485971.34	952993.45
PC STA 386+30.04	1486074.32	953143.64
PI STA 391+81.06	1486385.95	953598.07
PT STA 397+02.96	1486407.70	954148.66
POT STA 400+36.75	1486415.83	954353.85
POT STA 434+99.92	1486542.49	957550.91
POT STA 460+00.00	1486641.49	960049.03

DESCRIPTION	COORDINATE	
	NORTH	EAST
POT STA 465+00.00	1486656.27	960548.81
POT STA 468+00.00	1486658.39	960848.81
POT STA 472+94.34	1486650.84	961341.62
PC STA 475+16.80	1486649.02	961564.07
PI STA 476+73.31	1486647.51	961720.57
PT STA 478+29.50	1486663.40	961876.27
POT STA 482+47.90	1486705.89	962292.51
PC STA 484+34.10	1486723.11	962477.92
PI STA 485+87.74	1486737.32	962630.90
PT STA 487+41.32	1486743.86	962784.40
POT STA 487+93.09	1486746.06	962836.12
POT STA 502+58.78	1486803.97	964300.67

REVISIONS	
NAME	DATE

ILLINOIS DEPARTMENT OF TRANSPORTATION
HORIZONTAL CONTROL
 FAP 317 (US ROUTE 24)
 SECTION 25 RS-2 & 26 RS-4
 LIVINGSTON COUNTY

SCALE: _____ DATE _____
 DRAWN BY: BANDY
 CHECKED BY: STEUART

