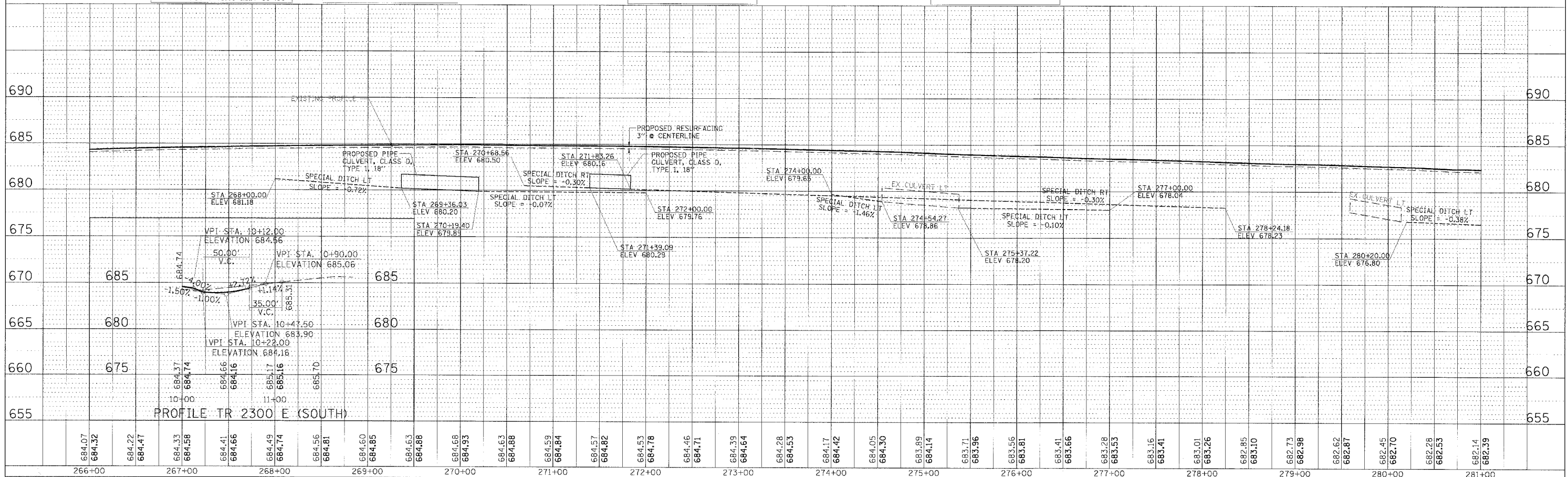
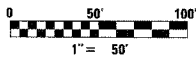
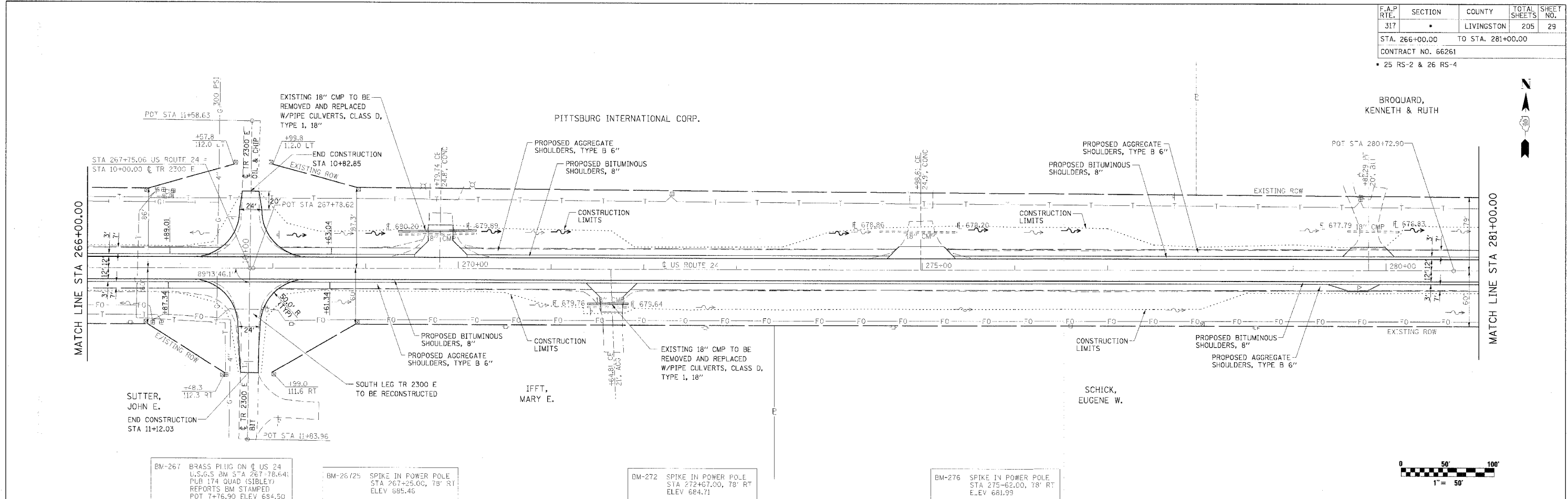


F.A.P. RTE.	SECTION	COUNTY	TOTAL SHEETS	SHEET NO.
317	*	LIVINGSTON	205	29
STA. 266+00.00 TO STA. 281+00.00				
CONTRACT NO. 66261				
• 25 RS-2 & 26 RS-4				

PLAN	DATE
NO.	
BY	
DATE	
NO.	
BY	
DATE	
NO.	

PROF. II F	DATE
NO.	
BY	
DATE	
NO.	
BY	
DATE	
NO.	



PLAN AND PROFILE, STA 266+00.00 TO STA 281+00.00, FAP 317 (US ROUTE 24)