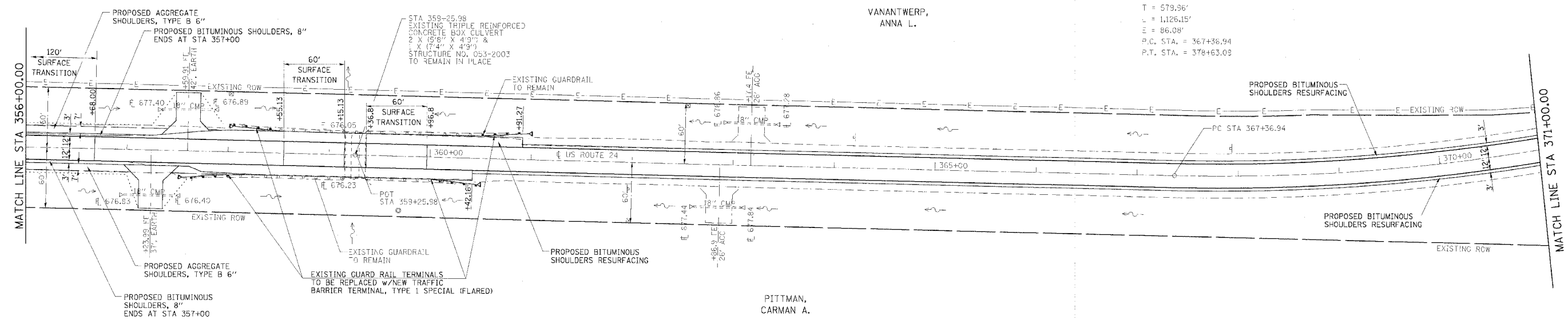


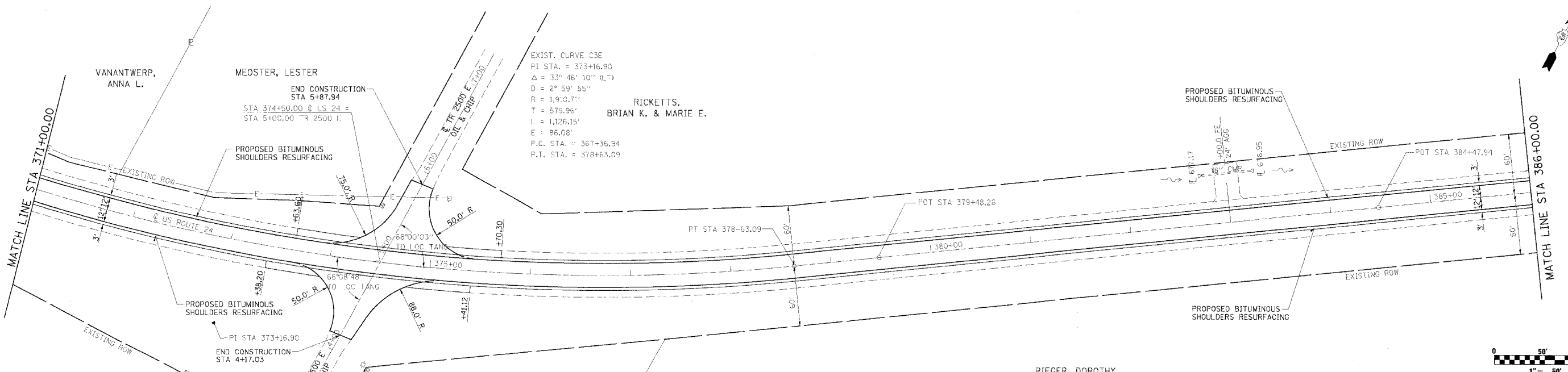
F.A.P. RTE.	SECTION	COUNTY	TOTAL SHEETS	SHEET NO.
317	*	LIVINGSTON	205	35
STA. 236+00.00 TO STA.266+00.00				
CONTRACT NO. 66261				

• 25 RS-2 & 26 RS-4

EXIST. CURVE C3E
 PI STA. = 373+16.90
 $\Delta = 33^\circ 46' 10''$ (LT)
 $D = 2^\circ 59' 55''$
 $R = 1,910.71'$
 $T = 579.36'$
 $L = 1,126.15'$
 $E = 86.08'$
 P.C. STA. = 367+36.94
 P.T. STA. = 378+63.09



BM-359 TOP N.W. CORNER HOWL.
 STA 359+15.00, 20' LT
 ELEVATION 682.44



BM-3745Q RAILROAD SPIKE IN
 POWER POLE
 STA 373+63.00, 115' RT
 ELEVATION 683.07

BM-37475 RAILROAD SPIKE IN
 POWER POLE
 STA 373+73.00, 100' L1
 ELEVATION 683.20

REVISIONS	
NAME	DATE

ILLINOIS DEPARTMENT OF TRANSPORTATION
PLAN SHEET
 FAP 317 (US ROUTE 24)
 SECTION 25 RS-2 & 26 RS-4
 LIVINGSTON COUNTY
 SCALE: _____
 DATE _____
 DRAWN BY BANDY
 CHECKED BY STEUART