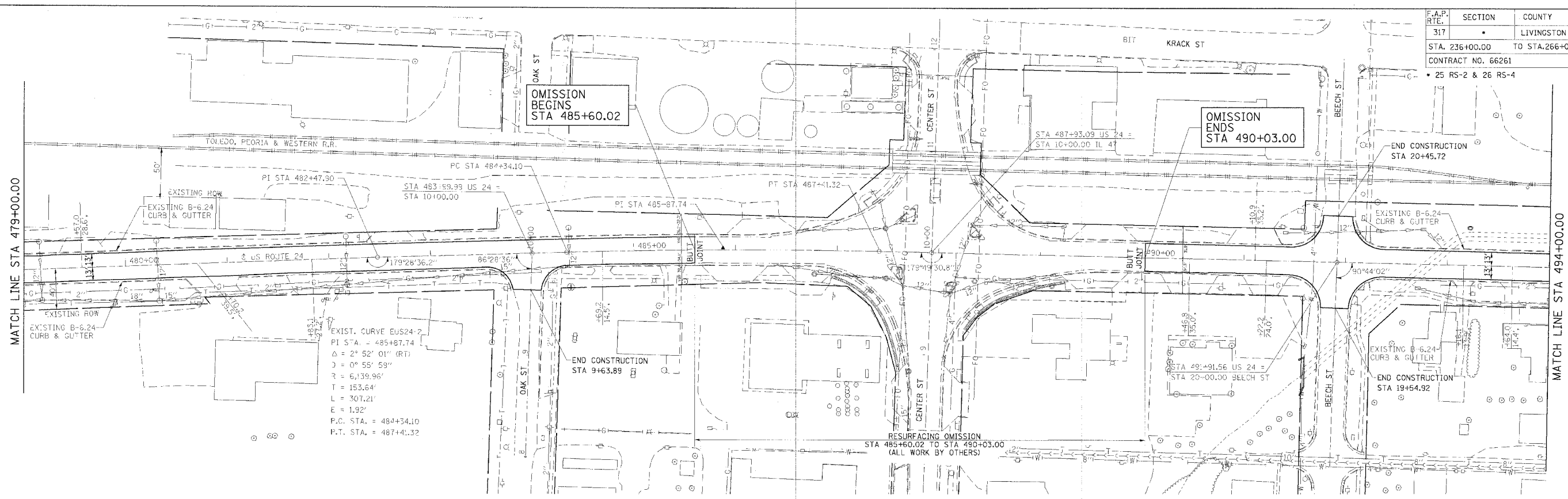


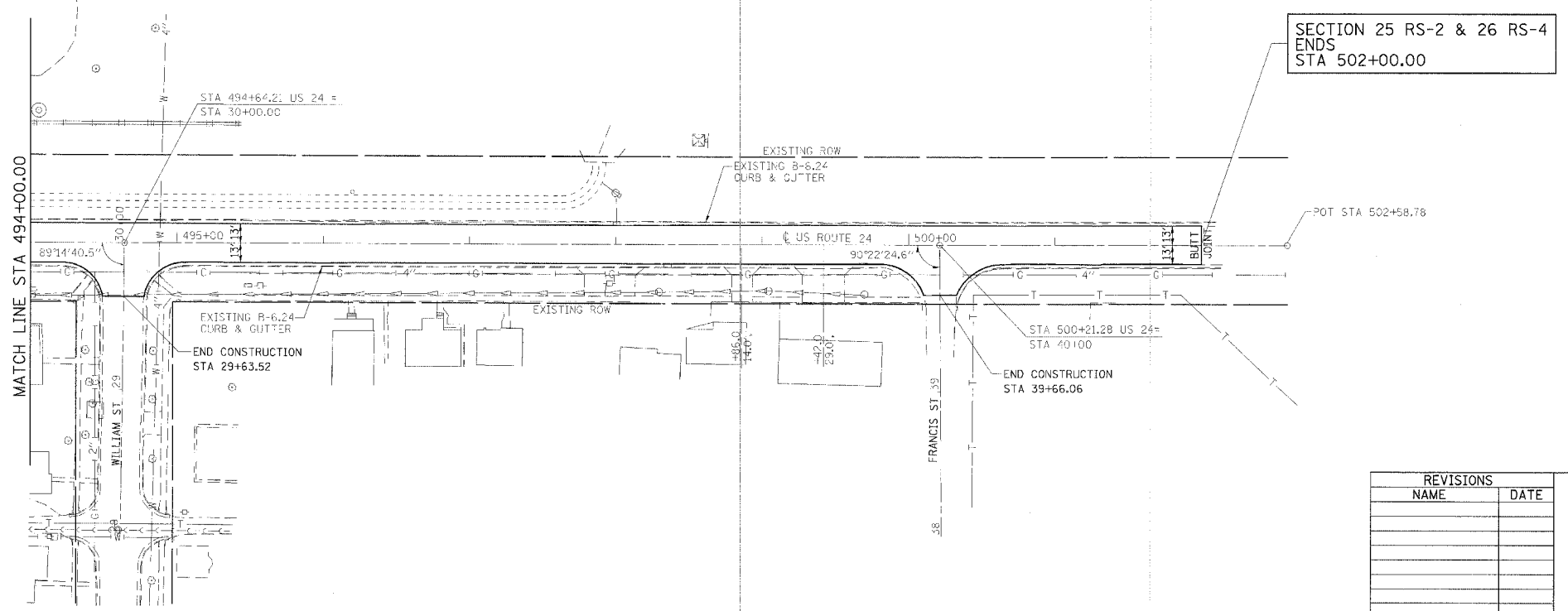
| F.A.P. RTE. | SECTION | COUNTY     | TOTAL SHEETS | SHEET NO. |
|-------------|---------|------------|--------------|-----------|
| 317         |         | LIVINGSTON | 205          | 39        |

STA. 236+00.00 TO STA.266+00.00  
 CONTRACT NO. 66261  
 • 25 RS-2 & 26 RS-4



BM-4 RAILROAD SPIKE IN POWER POLE, STA 487+58.00, 26.2' LT ELEVATION 685.75

BM-1A P.K. 'A' IN POWER POLE STA 488+19.00, 36.13' LT ELEVATION 684.80



| REVISIONS |      |
|-----------|------|
| NAME      | DATE |
|           |      |
|           |      |
|           |      |
|           |      |
|           |      |
|           |      |
|           |      |
|           |      |
|           |      |
|           |      |

ILLINOIS DEPARTMENT OF TRANSPORTATION  
**PLAN SHEET**  
 FAP 317 (US ROUTE 24)  
 SECTION 25 RS-2 & 26 RS-4  
 LIVINGSTON COUNTY  
 SCALE: \_\_\_\_\_  
 DATE \_\_\_\_\_  
 DRAWN BY BANDY  
 CHECKED BY STEUART