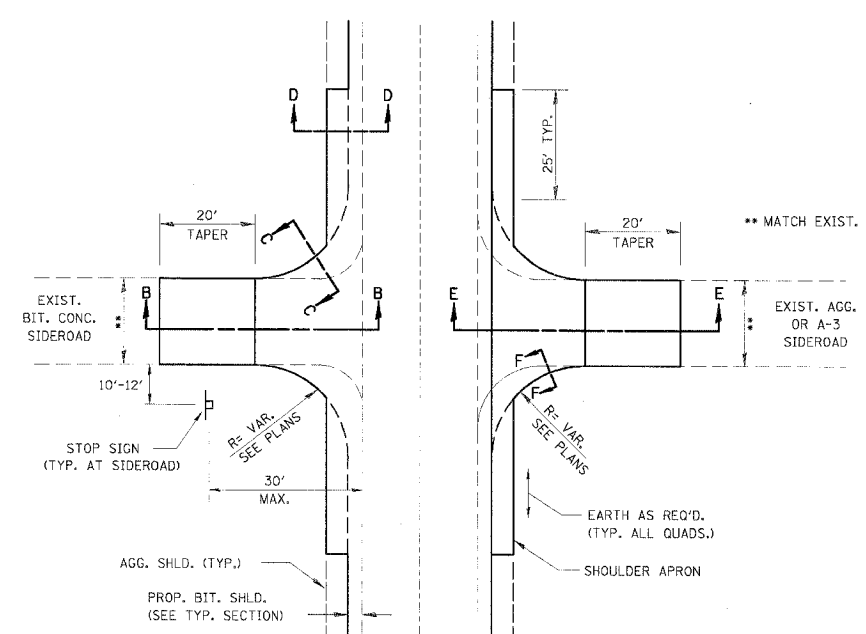
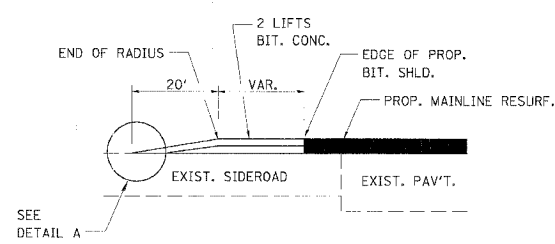


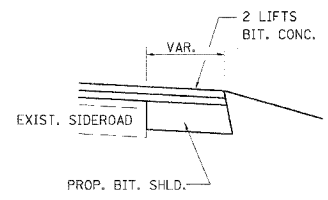
F.A.P. RTE.	SECTION	COUNTY	TOTAL SHEETS	SHEET NO.
317		LIVINGSTON	205	53
STA.		TO STA.		
CONTRACT NO. 66261				
• 25 RS-2 & 26 RS-4				



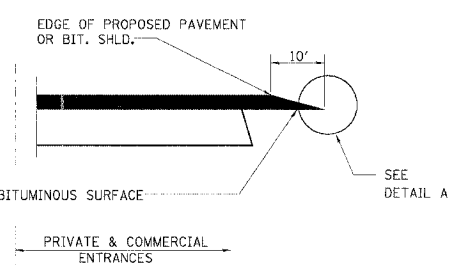
RESURFACING SIDEROAD DETAIL



SECTION B-B



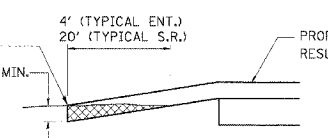
SECTION C-C



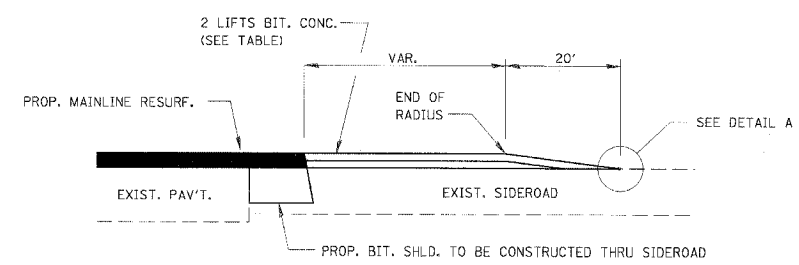
SECTION A-A

RESURFACING DETAILS AT ENTRANCES

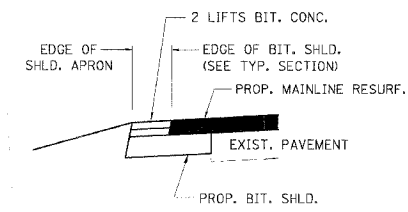
THE COST OF REMOVAL AT EXISTING BIT. OR P.C.C. LOCATIONS SHALL BE PAID FOR PER SQ. YD. BY THE APPROPRIATE PAY ITEM. REMOVAL AT EXISTING AGG. LOCATIONS SHALL BE INCIDENTAL TO THE BITUMINOUS. A-3 LOCATIONS SHALL BE FEATHER TAPERED.



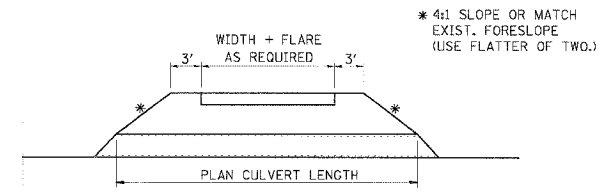
DETAIL A



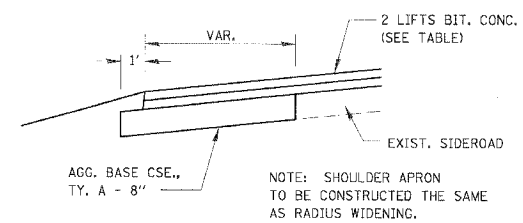
SECTION E-E



SECTION D-D



RESURFACING PLAN AT PRIVATE & COMMERCIAL ENTRANCES  
(DO NOT RESURFACE FIELD ENTRANCES)



SECTION F-F

NOTE: SHOULDER APRON TO BE CONSTRUCTED THE SAME AS RADIUS WIDENING.

THICKNESS TABLE FOR INCIDENTAL BITUMINOUS SURFACING ON SIDE ROADS	
TR 2300 E (N LEG)	3"
TR 2400 E (N LEG)	2 1/2"
TR 2400 E (S LEG)	2 1/2"
TR 2500 E (N LEG)	2 1/4"
TR 2500 E (S LEG)	2 1/4"
TR 2600 E (N LEG)	2 1/4"
TR 2600 E (S LEG)	2 1/4"

REVISIONS	
NAME	DATE

ILLINOIS DEPARTMENT OF TRANSPORTATION  
**MISCELLANEOUS DETAILS**  
 FAP 317 (US ROUTE 24)  
 SECTION 25 RS-2 & 26 RS-4  
 LIVINGSTON COUNTY  
 SCALE: \_\_\_\_\_ DRAWN BY BANDY  
 DATE \_\_\_\_\_ CHECKED BY STEUART