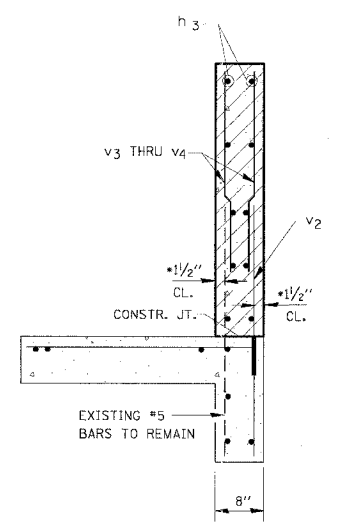
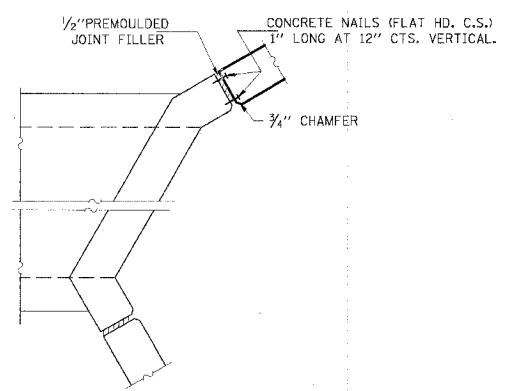
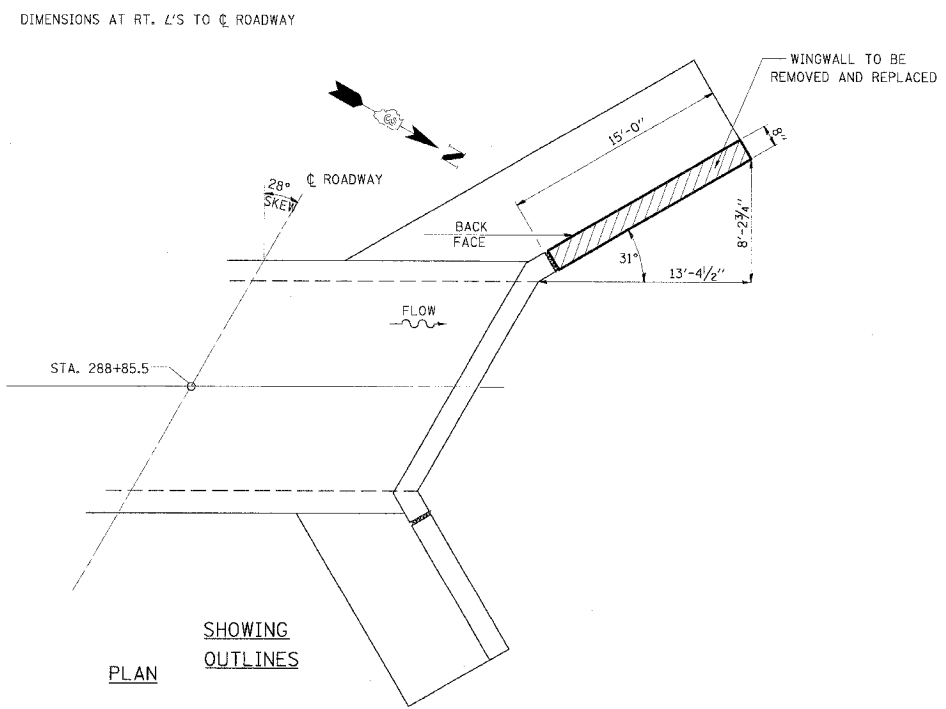
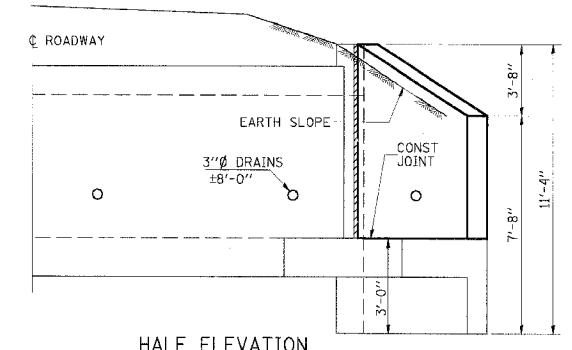
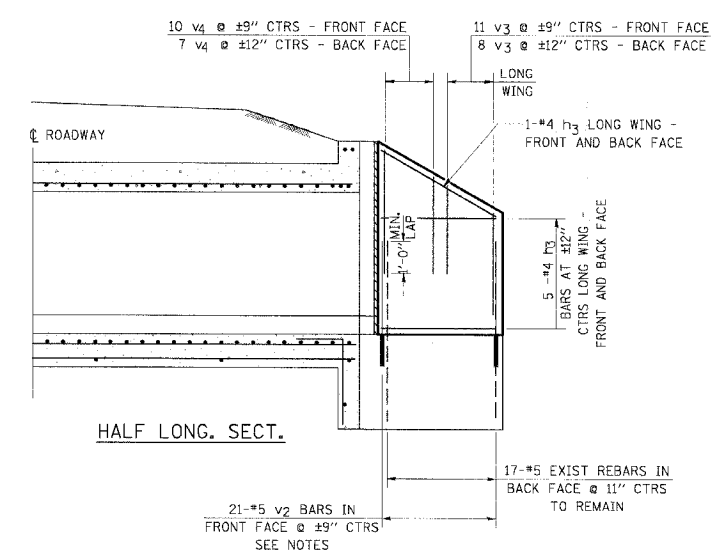


F.A.P. RTE.	SECTION	COUNTY	TOTAL SHEETS	SHEET NO.
317		LIVINGSTON	205	56
STA.		TO STA.		
CONTRACT NO. 66261				
• 25 RS-2 & 26 RS-4				



**SECTION A-A**  
 \*v BARS SHALL NOT BE PLACED MORE THAN 1/2\"/>

**BILL OF MATERIAL**

BAR	NO.	SIZE	LENGTH	SHAPE
h3	12	#4	14'-9"	
v2	21	#5	3'-2"	
v3	19	#4	5'-0"	
v4	17	#4	7'-0"	
CONCRETE REMOVAL CU .YD. 2.5				
CONCRETE HEADWALLS CU .YD. 2.5				
REINFORCEMENT BARS POUND 330				

**NOTES**  
 REINFORCEMENT BARS SHALL CONFORM TO THE REQUIREMENTS OF AASHTO M-31, M-42 OR M-53, GRADE 60.  
 v2 - MINIMUM EMBEDMENT LENGTH = 9"  
 NEW BARS SHALL BE FIELD DRILLED AND EPOXY GROUTED INTO EXISTING CONCRETE IN ACCORDANCE WITH THE RECOMMENDATION OF THE EPOXY GROUT MANUFACTURER AND THE STANDARD SPECIFICATIONS, SECTION 584. COST INCIDENTAL TO "REINFORCEMENT BARS".  
 THE CONTRACTOR SHALL REMOVE THE EXISTING WINWALL WITH SUFFICIENT CARE SO AS TO NOT DISTURB THE INTEGRITY OF THE EXISTING # 5 VERTICAL REINFORCEMENT BARS THAT EXTEND INTO THE BOX CULVERT FOOTING. IF, IN THE OPINION OF THE ENGINEER, THE CONTRACTOR'S REMOVAL OPERATIONS RESULT IN THE DESTRUCTION OF THESE REINFORCEMENT BARS SUCH THAT THEY CANNOT BE RE-USED, THE CONTRACTOR SHALL INSTALL A ROW OF NEW BARS SIMILAR TO WHAT IS PROPOSED FOR THE FRONT FACE AT HIS/HER EXPENSE.

REVISIONS	
NAME	DATE

ILLINOIS DEPARTMENT OF TRANSPORTATION  
**WINWALL REPLACEMENT DETAILS**  
 LT STA 288+89.11  
 FAP 317 (US ROUTE 24)  
 SECTION 25 RS-2 & 26 RS-4  
 LIVINGSTON COUNTY  
 SCALE: DRAWN BY BARGIEL  
 DATE CHECKED BY STEUART