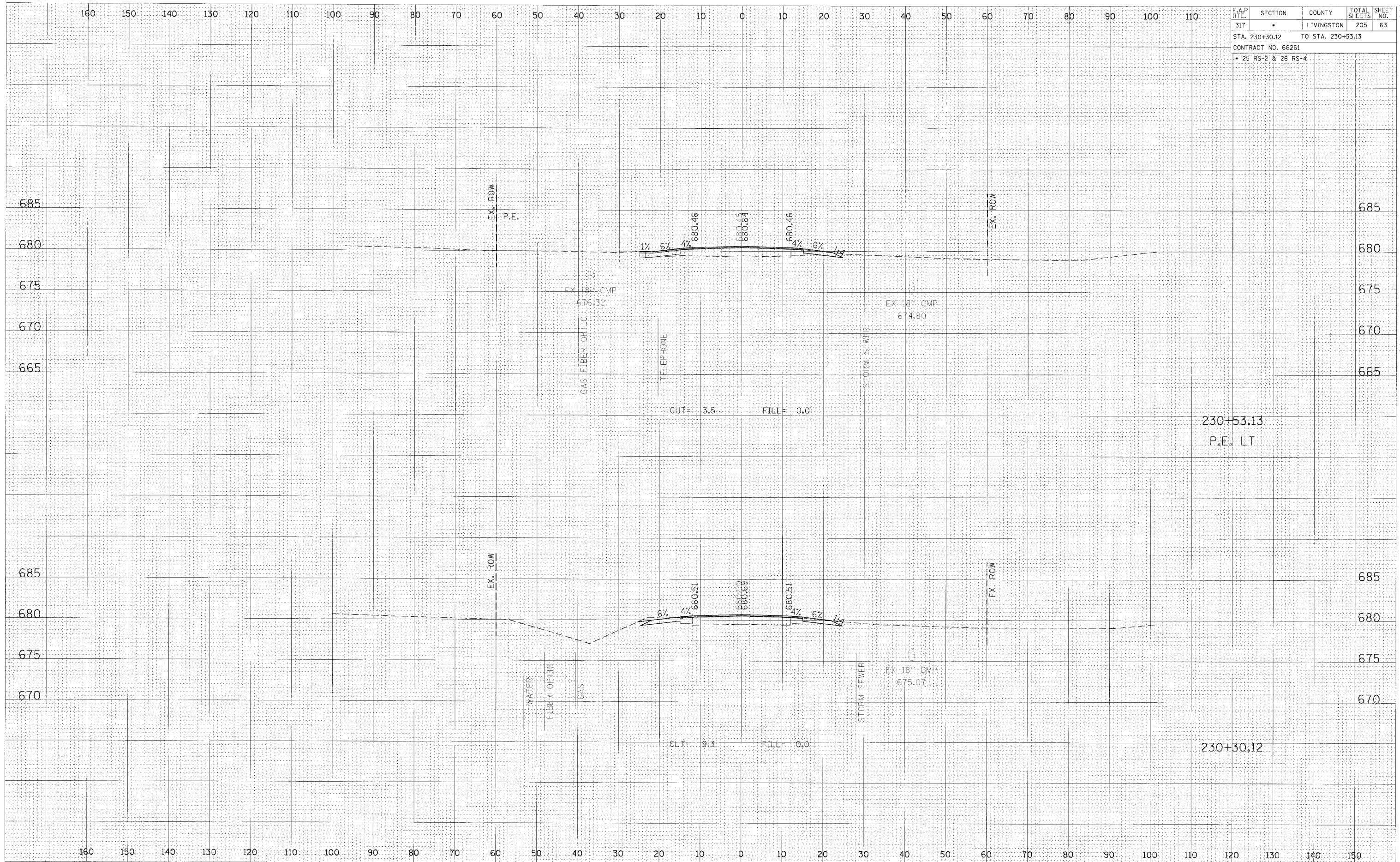


F.A.P. RTE.	SECTION	COUNTY	TOTAL SHEETS	SHEET NO.
317		LIVINGSTON	205	63
STA. 230+30.12 TO STA. 230+53.13				
CONTRACT NO. 66261				
• 25 RS-2 & 26 RS-4				

DATE	BY	REVISED	DATE
		SURVEY	
		PLOTTED	
		NOTE BOOK	
		AREAS	
		CHECKED	
		NO.	

DATE	BY	REVISED	DATE
		SURVEY	
		PLOTTED	
		NOTE BOOK	
		AREAS	
		CHECKED	
		NO.	



CROSS SECTION, STA 230+30.12 TO 230+53.13, FAP 317 (US ROUTE 24)