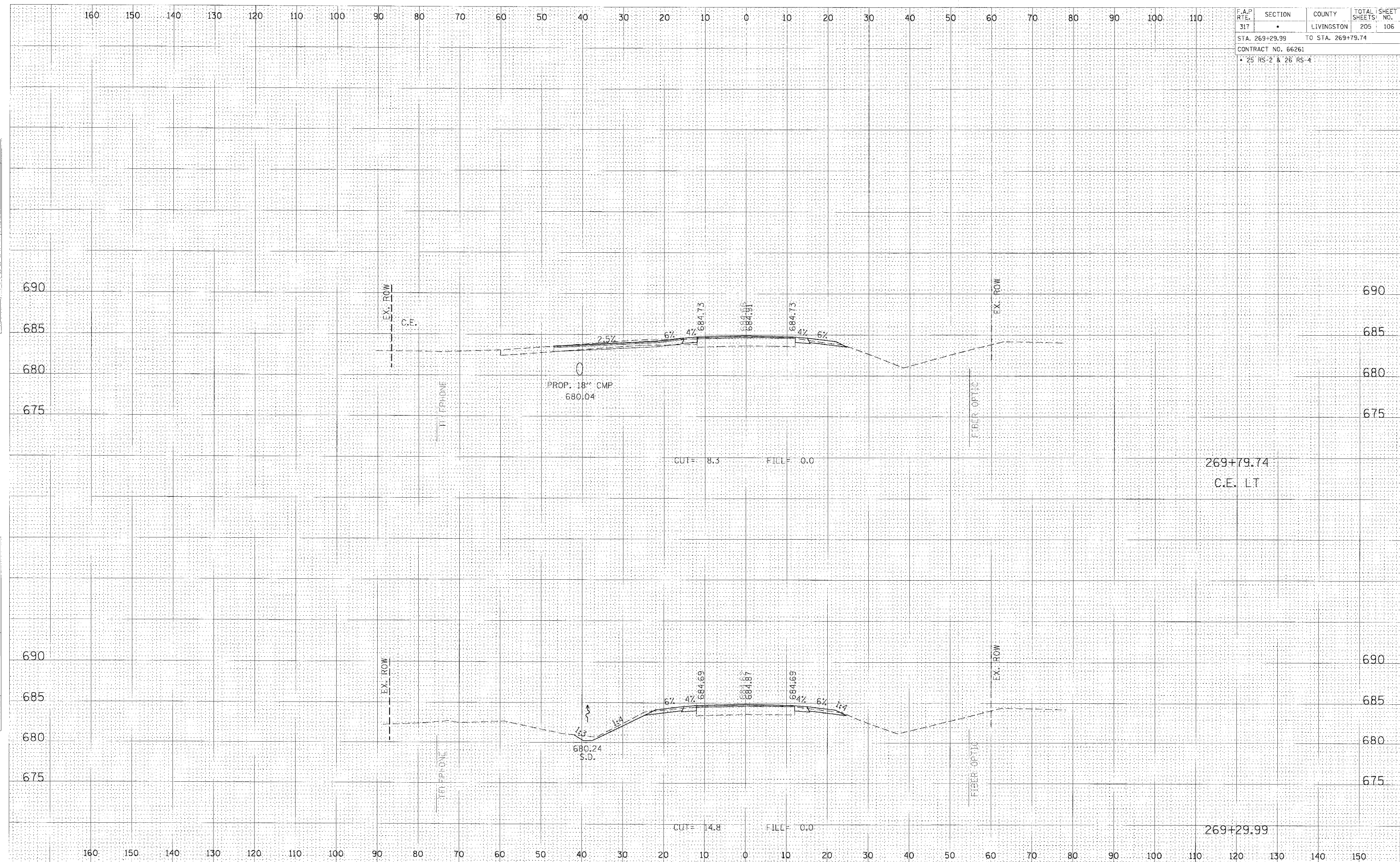


F.A.P. RTE.	SECTION	COUNTY	TOTAL SHEETS	SHEET NO.
317	•	LIVINGSTON	205	106
STA. 269+29.99		TO STA. 269+79.74		
CONTRACT NO. 66261				
• 25 RS-2 & 26 RS-4				

FINAL SURVEY	DATE
BY	
STARTED	
PLOTTED	
NOTE BOOK	
AREAS CHECKED	

OPTIONAL SURVEY	DATE
BY	
STARTED	
PLOTTED	
NOTE BOOK	
AREAS CHECKED	



CROSS SECTION, STA 269+29.99 TO 269+79.74, FAP 317 (US ROUTE 24)