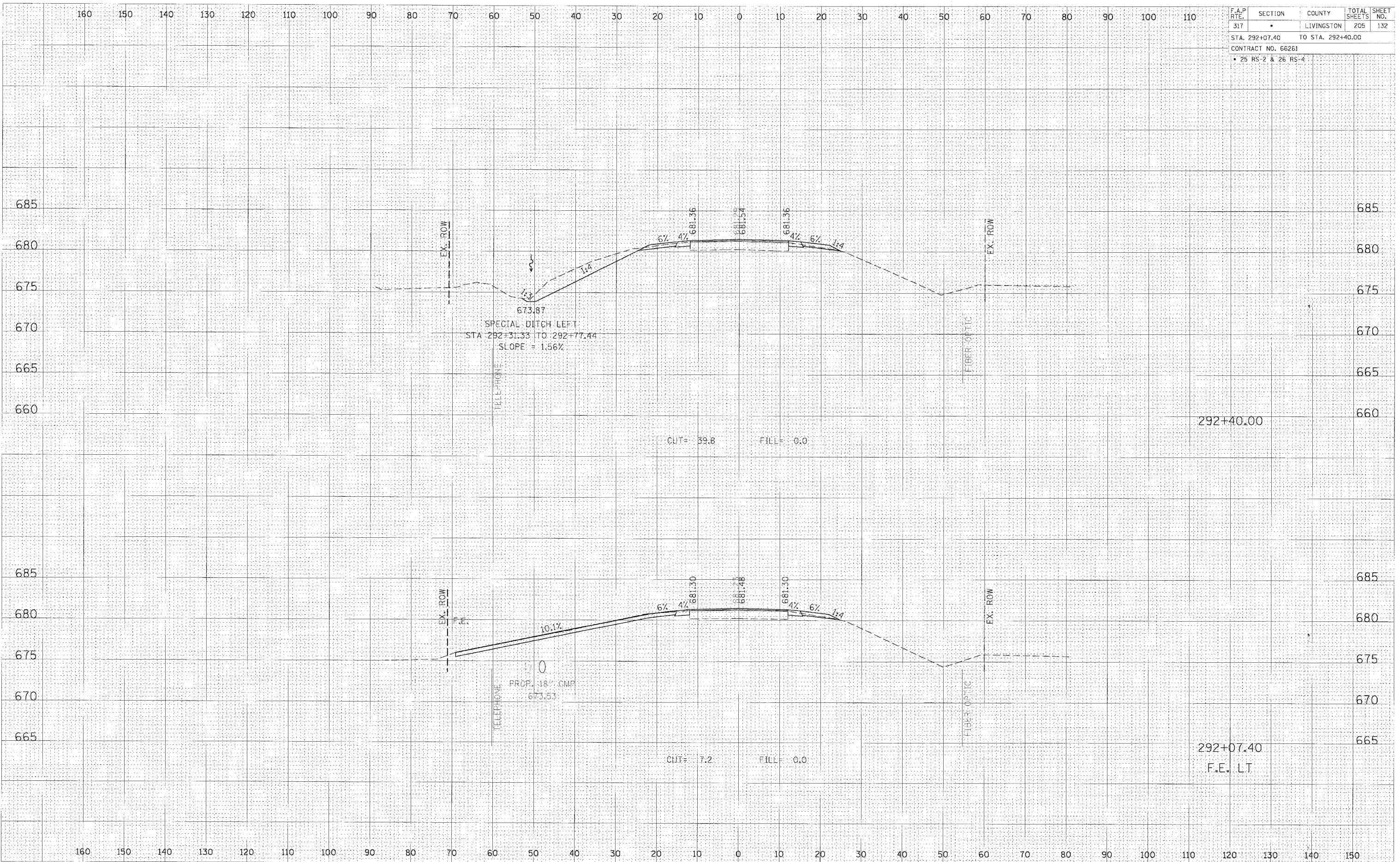


F.A.P. RTE.	SECTION	COUNTY	TOTAL SHEETS	SHEET NO.
317	*	LIVINGSTON	205	132
STA. 292+07.40		TO STA. 292+40.00		
CONTRACT NO. 66261				
• 25 RS-2 & 26 RS-4				



BY \_\_\_\_\_ DATE \_\_\_\_\_  
 SURVEY \_\_\_\_\_  
 PLOTTED \_\_\_\_\_  
 NOTE BOOK \_\_\_\_\_  
 AREAS CHECKED \_\_\_\_\_

BY \_\_\_\_\_ DATE \_\_\_\_\_  
 SURVEY \_\_\_\_\_  
 PLOTTED \_\_\_\_\_  
 NOTE BOOK \_\_\_\_\_  
 AREAS CHECKED \_\_\_\_\_

CROSS SECTION, STA 292+07.40 TO 292+40.00, FAP 317 (US ROUTE 24)