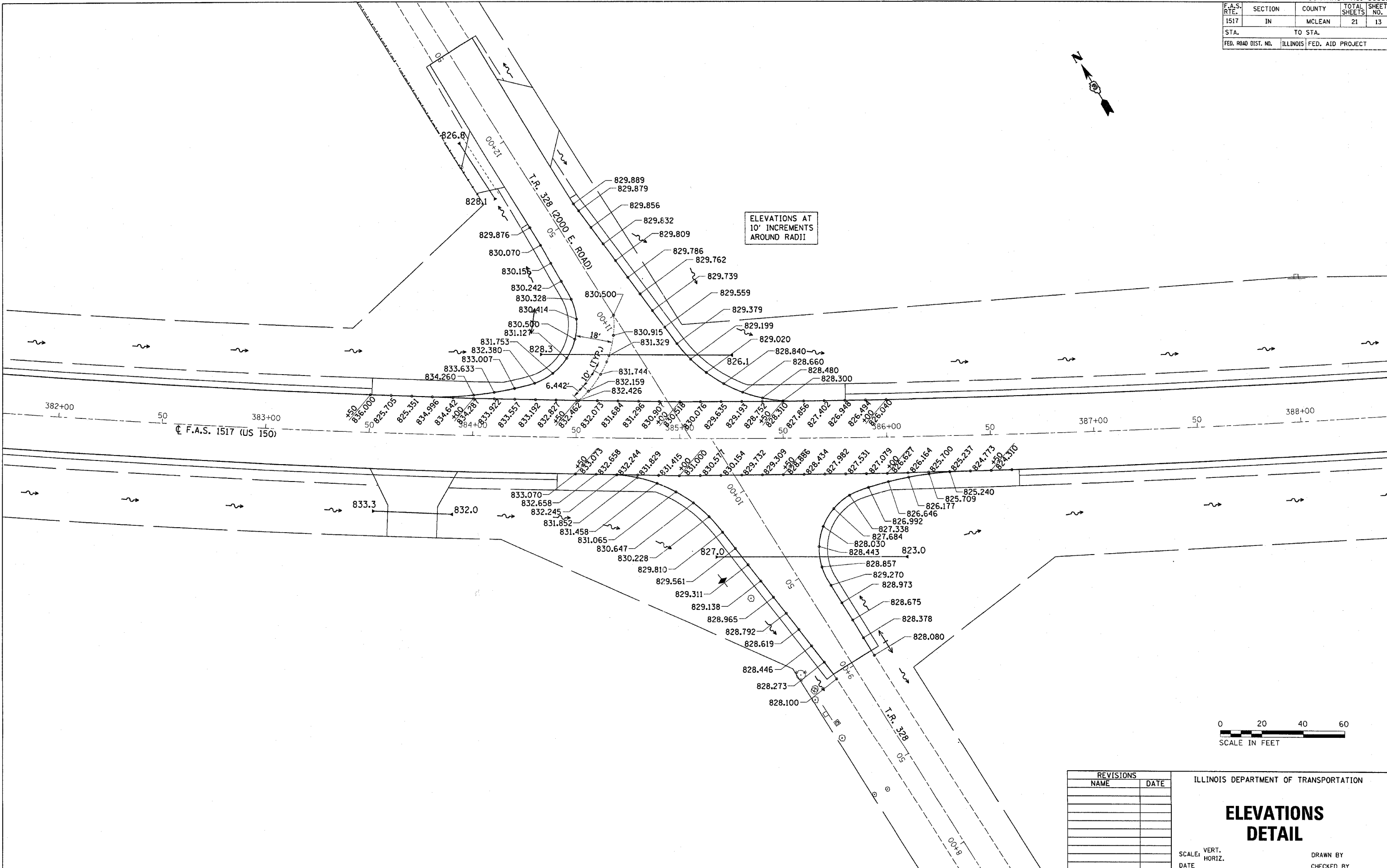
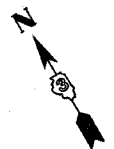
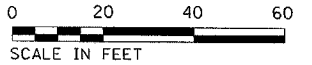


F.A.S. RTE.	SECTION	COUNTY	TOTAL SHEETS	SHEET NO.
1517	IN	MCLEAN	21	13
STA.		TO STA.		
FED. ROAD DIST. NO.		ILLINOIS FED. AID PROJECT		



ELEVATIONS AT 10' INCREMENTS AROUND RADII



REVISIONS	
NAME	DATE

ILLINOIS DEPARTMENT OF TRANSPORTATION

### ELEVATIONS DETAIL

SCALE: VERT.  
HORIZ.  
DATE

DRAWN BY  
CHECKED BY