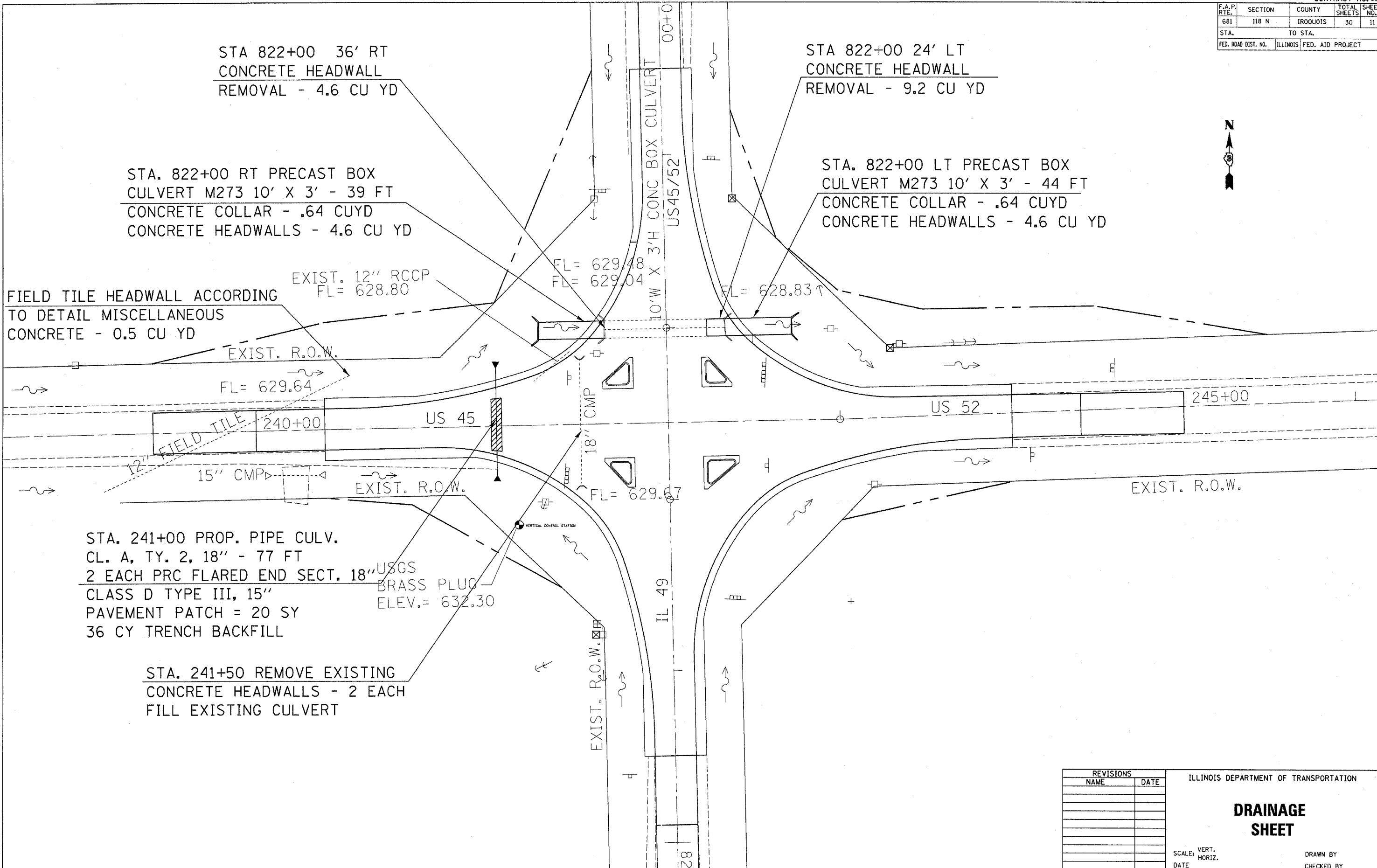


F.A.P. RTE.	SECTION	COUNTY	TOTAL SHEETS	SHEET NO.
681	118 N	IROQUOIS	30	11
STA.		TO STA.		
FED. ROAD DIST. NO.		ILLINOIS FED. AID PROJECT		



STA 822+00 36' RT
CONCRETE HEADWALL
REMOVAL - 4.6 CU YD

STA 822+00 24' LT
CONCRETE HEADWALL
REMOVAL - 9.2 CU YD

STA. 822+00 RT PRECAST BOX
CULVERT M273 10' X 3' - 39 FT
CONCRETE COLLAR - .64 CUYD
CONCRETE HEADWALLS - 4.6 CU YD

STA. 822+00 LT PRECAST BOX
CULVERT M273 10' X 3' - 44 FT
CONCRETE COLLAR - .64 CUYD
CONCRETE HEADWALLS - 4.6 CU YD

FIELD TILE HEADWALL ACCORDING
TO DETAIL MISCELLANEOUS
CONCRETE - 0.5 CU YD

EXIST. 12" RCCP
FL= 628.80

FL= 629.48
FL= 629.04

FL= 628.83 ↑

EXIST. R.O.W.
FL= 629.64

12" FIELD TILE

240+00

US 45

18" CMP

US 52

245+00

15" CMP

EXIST. R.O.W.

FL= 629.67

EXIST. R.O.W.

STA. 241+00 PROP. PIPE CULV.
CL. A, TY. 2, 18" - 77 FT
2 EACH PRC FLARED END SECT. 18"
CLASS D TYPE III, 15"
PAVEMENT PATCH = 20 SY
36 CY TRENCH BACKFILL

USGS
BRASS PLUG
ELEV.= 632.30

STA. 241+50 REMOVE EXISTING
CONCRETE HEADWALLS - 2 EACH
FILL EXISTING CULVERT

EXIST. R.O.W.

IL 49

2/14/2005 c:\projects\66534\drain\118.dgn

REVISIONS	
NAME	DATE

ILLINOIS DEPARTMENT OF TRANSPORTATION

DRAINAGE SHEET

SCALE: VERT.
HORIZ.
DATE

DRAWN BY
CHECKED BY