




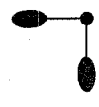

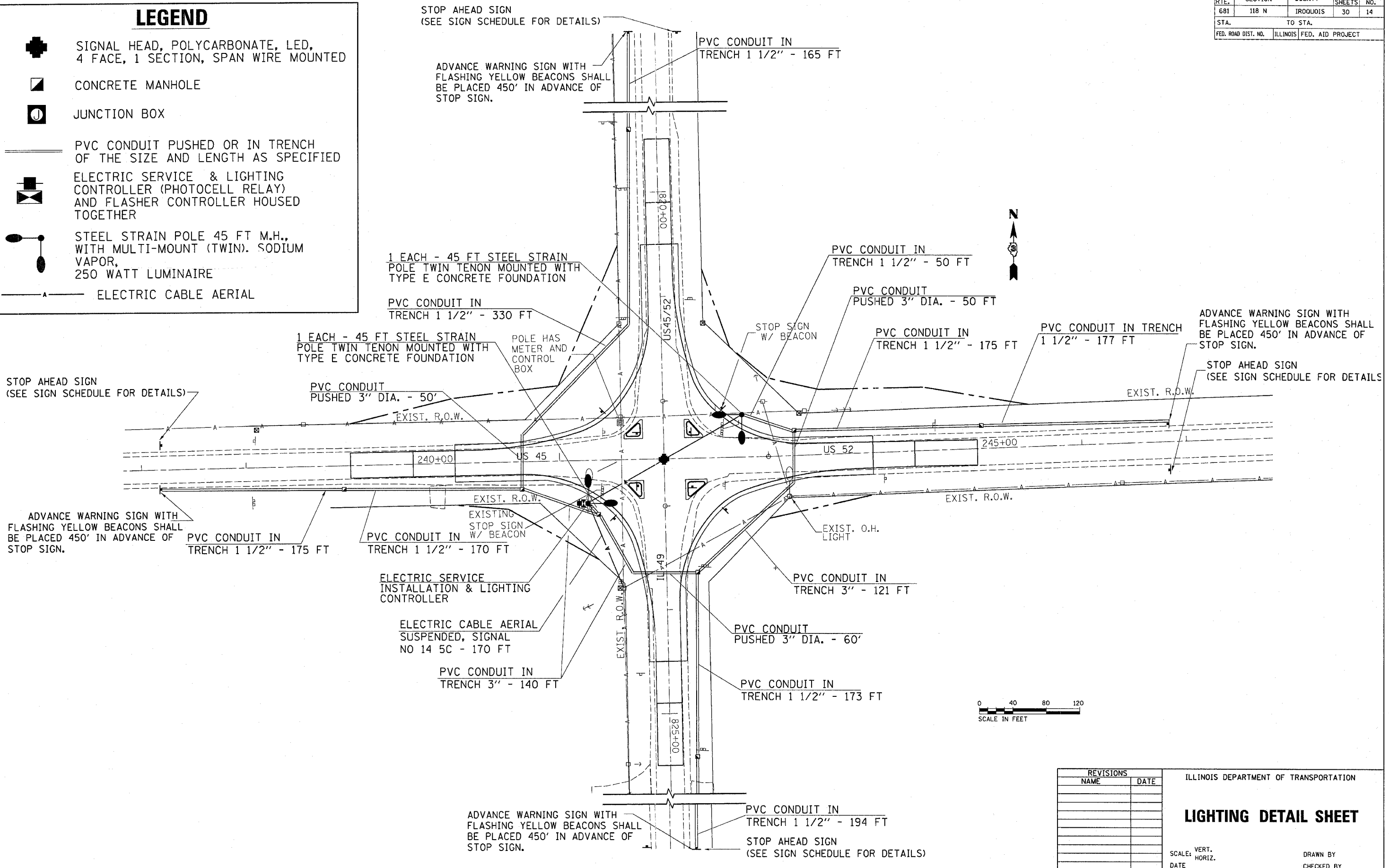


F.A.P. RTE.	SECTION	COUNTY	TOTAL SHEETS	SHEET NO.
681	118 N	IRROQUOIS	30	14
STA.	TO STA.			
FED. ROAD DIST. NO.	ILLINOIS FED. AID PROJECT			

LEGEND

-  SIGNAL HEAD, POLYCARBONATE, LED, 4 FACE, 1 SECTION, SPAN WIRE MOUNTED
-  CONCRETE MANHOLE
-  JUNCTION BOX
-  PVC CONDUIT PUSHED OR IN TRENCH OF THE SIZE AND LENGTH AS SPECIFIED
-  ELECTRIC SERVICE & LIGHTING CONTROLLER (PHOTOCELL RELAY) AND FLASHER CONTROLLER HOUSED TOGETHER
-  STEEL STRAIN POLE 45 FT M.H., WITH MULTI-MOUNT (TWIN). SODIUM VAPOR, 250 WATT LUMINAIRE
-  ELECTRIC CABLE AERIAL



REVISIONS	
NAME	DATE

ILLINOIS DEPARTMENT OF TRANSPORTATION

LIGHTING DETAIL SHEET

SCALE: VERT. _____
 HORIZ. _____
 DATE _____

DRAWN BY _____
 CHECKED BY _____