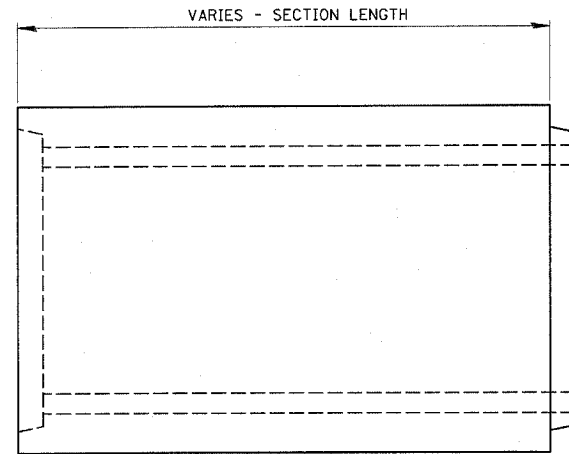
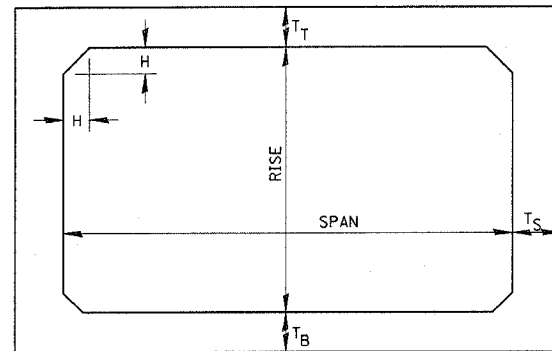


F.A.P. RTE.	SECTION	COUNTY	TOTAL SHEETS	SHEET NO.
681	118 N	IROQUOIS	30	19
STA.		TO STA.		
FED. ROAD DIST. NO.		ILLINOIS FED. AID PROJECT		



**ELEVATION**



NOTE: THE HAUNCH DIMENSION H, IS EQUAL TO THE WALL THICKNESS T<sub>S</sub>.

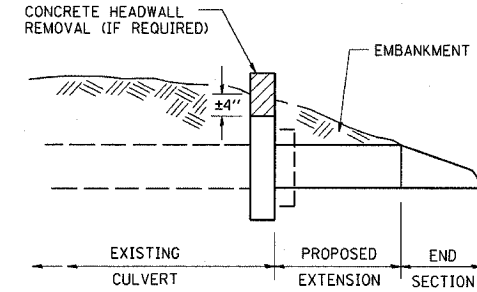
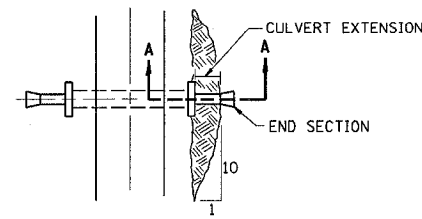
**TYPICAL BOX SECTION**

SPAN, FEET	T <sub>T</sub> , INCHES		T <sub>B</sub> , INCHES		T <sub>S</sub> , INCHES	
	M 259	M 273	M 259	M 273	M 259	M 273
3	4	7	4	6	4	4
4	5	7 1/2	5	6	5	5
5	6	8	6	7	6	6
6	7	8	7	7	7	7
7	8	8	8	8	8	8
8	8	8	8	8	8	8
9	9	9	9	9	9	9
10	10	10	10	10	10	10
11	11	11	11	11	11	11
12	12	12	12	12	12	12

**TYPICAL THICKNESSES**

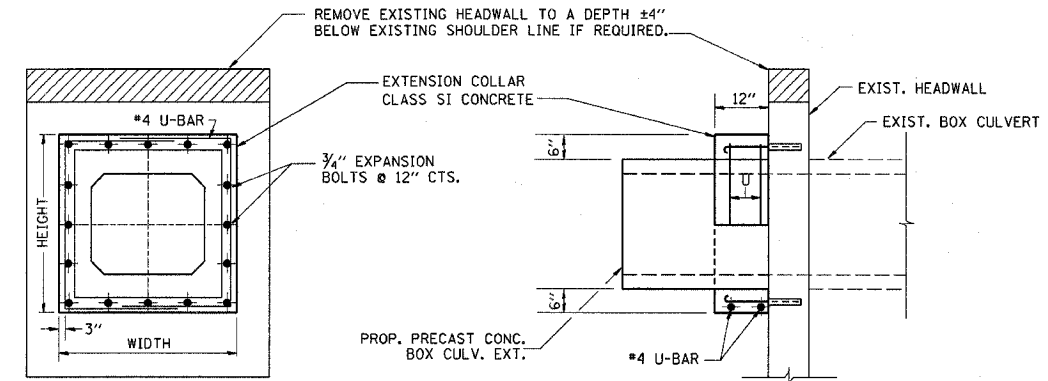
**GENERAL NOTES:**

MINIMUM COVER FOR BOX CULVERTS SHALL BE 6".

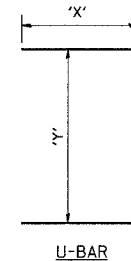


**SECTION A-A**

**PLAN AT CULVERT EXTENSIONS**



EXPANSION BOLTS SHALL CONSIST OF SELF DRILLING EXPANSION SHIELDS AND 3/4" DIA. HOOKED BOLTS. HOOKED BOLTS SHALL EXTEND A MINIMUM OF 9" INTO NEW CONCRETE. BOLTS SHALL BE DRILLED IN THE CENTER OF THE EXISTING BOX CULVERT BARREL WALLS. MINIMUM CERTIFIED PROOF LOAD = 4,080 LBS.



**U-BAR**

LOCATION	EXISTING CULVERT SIZE	PRECAST CULVERT EXTENSION	EXTENSION COLLAR		U-BAR		CONC. COLLAR	REINFORCEMENT BARS	3/4" DIA. EXPANSION BOLTS
			WIDTH	HEIGHT	'X'	'Y'			
STA	FT. x FT.	FT. x FT.	IN.	IN.	IN.	IN.	CU. YD.	POUND	EACH
822+00RT	10'x3'	39	152	68	77	63	.64	50	32
822+00LT	10'x3'	44	152	68	77	63	.64	50	32
TOTAL							1.28	100	64

QUANTITIES ARE FOR ONE SIDE ONLY

**COLLAR DETAIL (PRECAST BOX CULVERT EXTENSION OF BOX CULVERT)**

REVISIONS	
NAME	DATE

ILLINOIS DEPARTMENT OF TRANSPORTATION

**CONCRETE COLLAR DETAIL**

SCALE: VERT. HORIZ. DATE

DRAWN BY CHECKED BY