

F.A.P. RTE.	SECTION	COUNTY	TOTAL SHEETS	SHEET NO.
681	118 N	IROQUOIS	30	1

P-93-027-04
D-93-016-05

INDEX OF SHEETS

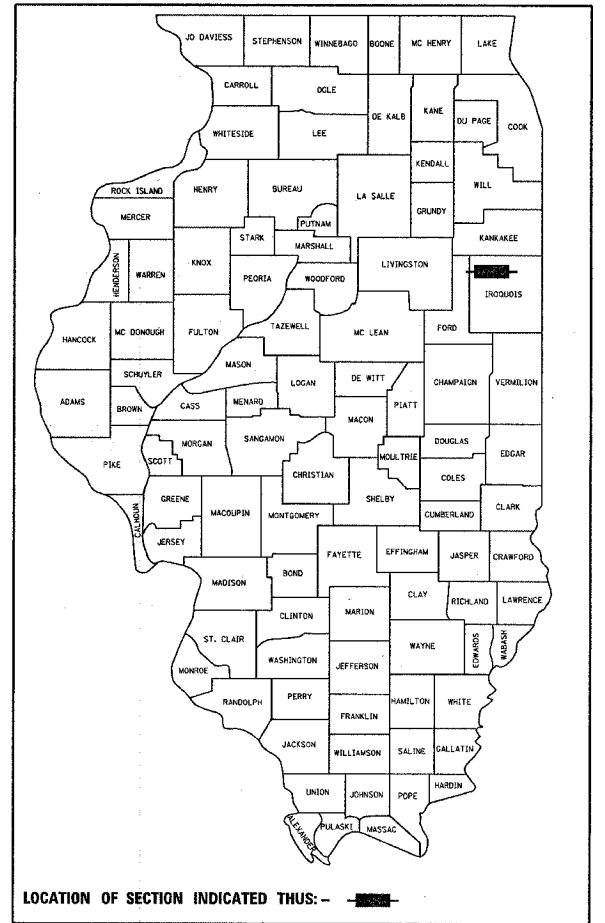
- 1 COVER SHEET
- 2 GENERAL NOTES, STANDARDS, INDEX OF SHEETS
- 3.-4. SUMMARY OF QUANTITIES
- 5.-6. SCHEDULES
- 7 TYPICAL SECTIONS
- 8 ALIGNMENT SHEET
- 9 EXISTING AND PROPOSED PLAN
- 10 INTERSECTION LAYOUT
- 11 DRAINAGE PLAN
- 12 PAVEMENT MARKING PLAN
- 13 EROSION CONTROL PLAN
- 14.-15. LIGHTING DETAIL PLAN
- 16 PROPOSED SIGNING PLAN
- 17 ISLAND PAVEMENT DETAIL
- 18 CAST IN PLACE WINGWALL DETAIL
- 19 CONCRETE COLLAR DETAIL
- 20 FIELD TILE DETAIL
- 21.-23. DETAILS
- 24.-30. CROSS-SECTIONS

STATE OF ILLINOIS
DEPARTMENT OF TRANSPORTATION
DIVISION OF HIGHWAYS
**PROPOSED
HIGHWAY PLANS**

FAP ROUTE 681 (US 45)
SECTION 118 N
PROJECT HS-0681(029)
IROQUOIS COUNTY

C-93-009-05

INTERSECTION RADIUS WIDENING AND CONVERSION
TO 4 WAY STOP WITH FLASHERS AND BEACON
WITH THE ADDITION OF HIGHWAY LIGHTING



HIGHWAY CLASSIFICATION
RURAL MINOR ARTERIAL

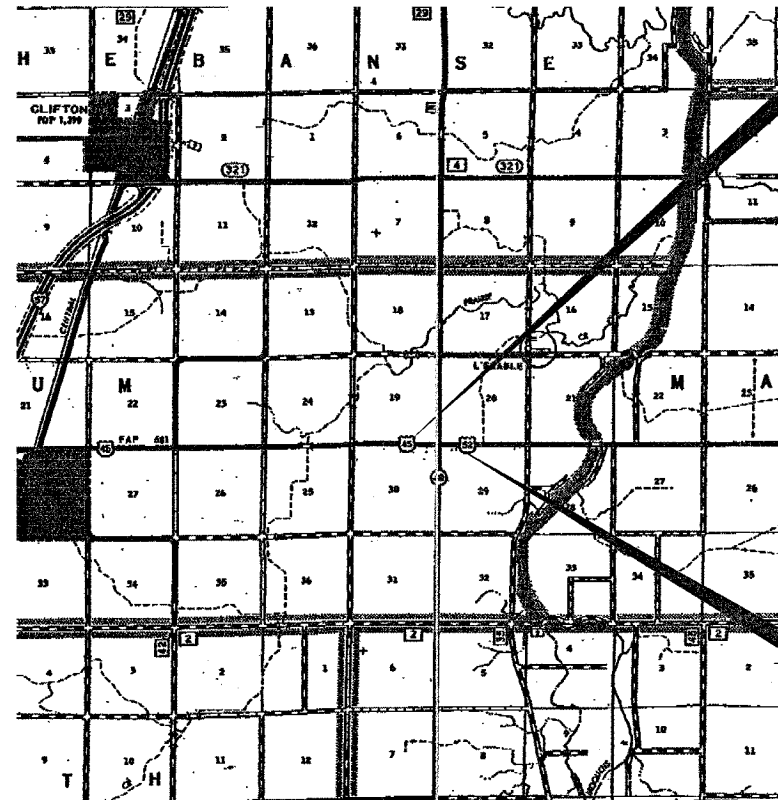
ADT INFORMATION
YR 2005 = 3750
P.C. 86.6% S.U. 7.0% M.U. 6.4%

CLASS II TRUCK ROUTE

STATE OF ILLINOIS
DEPARTMENT OF TRANSPORTATION
DIVISION OF HIGHWAYS

SUBMITTED FEB 15 20 05
Shirley L. Mounts
DEPUTY DIRECTOR OF HIGHWAYS, REGION ENGINEER
March 25, 20 05
Mike Nene
ENGINEER OF DESIGN AND ENVIRONMENT
March 25, 20 05
Victoria Mader
DIRECTOR OF HIGHWAYS, CHIEF ENGINEER

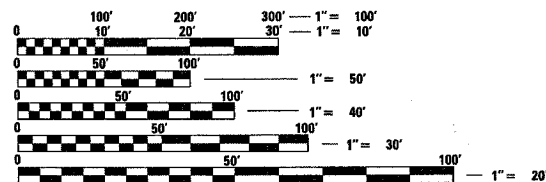
PRINTED BY THE AUTHORITY
OF THE STATE OF ILLINOIS



PROJECT BEGINS
STATION 240+00

PROJECT ENDS
STATION 244+00

NET AND GROSS LENGTH OF IMPROVEMENT = 1000 FT = .19 MI



FULL SIZE PLANS HAVE BEEN PREPARED USING STANDARD
ENGINEERING SCALES. REDUCED SIZED PLANS WILL NOT
CONFORM TO STANDARD SCALES. IN MAKING MEASUREMENTS
ON REDUCED PLANS, THE ABOVE SCALES MAY BE USED.

J.U.L.I.E.
JOINT UTILITY LOCATION INFORMATION FOR EXCAVATION
1-800-892-0123

PROJECT ENGINEER: DAVE BROVIAK
SQUAD LEADER: SCOTT A FERGUSON

CONTRACT NO. 66534

F.A.P. RTE.	SECTION	COUNTY	TOTAL SHEETS	SHEET NO.
681	118 N	IROQUOIS	30	2
STA.		TO STA.		
FED. ROAD DIST. NO.	ILLINOIS	FED. AID PROJECT		

GENERAL NOTES

THE THICKNESS OF BITUMINOUS MIXTURES SHOWN ON THE PLANS IS THE NOMINAL THICKNESS. DEVIATIONS FROM THE NOMINAL THICKNESS WILL BE PERMITTED WHEN SUCH DEVIATIONS OCCUR DUE TO IRREGULARITIES IN THE EXISTING SURFACE OR BASE ON WHICH THE BITUMINOUS MIXTURE IS PLACED.

THE BITUMINOUS SURFACE OF ALL MAILBOX TURNOUTS, PRIVATE ENTRANCES, COMMERCIAL ENTRANCES, AND SIDE ROADS SHALL BE MADE NEATLY, IN A WORKMANLIKE MANNER, AND SHALL ACCURATELY CONFORM TO THE SHAPES AND DIMENSIONS SHOWN ON THE PLAN DETAILS. IF REQUIRED BY THE ENGINEER, THE CONTRACTOR SHALL BE REQUIRED TO SAW CUT THE BITUMINOUS SURFACE TO CONFORM TO THE SHAPES AND DIMENSIONS SHOWN ON THE PLAN DETAILS. THIS WORK SHALL BE INCLUDED IN THE COST OF THE BITUMINOUS SURFACE

THE BASE COURSE WIDENING SHALL BE CARRIED THROUGH ALL ENTRANCES, SIDE ROADS, AND MAILBOX TURNOUTS. EXCEPTIONS WILL BE SHOWN ON THE PLANS.

EXCEPT AS NOTED ON THE PLANS, PAVEMENT GRADES SHOWN ARE AT THE TOP OF PAVEMENT SURFACES.

BEFORE ORDERING PIPE CULVERTS OR PIPE DRAINS, THE CONTRACTOR SHALL CONSULT THE ENGINEER FOR EXACT LENGTHS.

AGGREGATE (PRIME COAT): FA 20 MAY BE USED IN ADDITION TO THE GRADATIONS LISTED IN THE 3RD PARAGRAPH OF ARTICLE 1003.03(c) OF THE STANDARD SPECIFICATIONS.

THE ENGINEER WILL BE THE SOLE JUDGE CONCERNING CURING TIME FOR THE VARIOUS BITUMINOUS LIFTS.

FOR STABILIZATION, ALL TYPE III BARRICADES SHALL REQUIRE A MINIMUM OF FOUR SAND BAGS PER BARRICADE.

WHERE SECTION OR SUBSECTION MONUMENTS ARE ENCOUNTERED, THE ENGINEER SHALL BE NOTIFIED BEFORE SUCH MONUMENTS ARE REMOVED. THE CONTRACTOR SHALL PROTECT AND CAREFULLY PRESERVE ALL MONUMENTS UNTIL AN AUTHORIZED SURVEYOR OR AGENT HAS WITNESSED OR OTHERWISE REFERENCED THEIR LOCATION. THE CONTRACTOR SHALL BE RESPONSIBLE FOR HAVING AN AUTHORIZED SURVEYOR REESTABLISH ANY SECTION OR SUBSECTION MONUMENTS DESTROYED BY HIS OPERATIONS.

SEEDING SHALL NOT BE PERMITTED AT ANY TIME WHEN THE GROUND IS FROZEN, WET, OR IN AN UNTILLABLE CONDITION. LOCATIONS TO BE SEEDED WILL BE DETERMINED BY THE ENGINEER.

ONLY THOSE TREES DESIGNATED BY THE ENGINEER OR LISTED IN THE TREE REMOVAL SCHEDULE SHALL BE REMOVED. THE CONTRACTOR SHALL PROTECT ALL REMAINING TREES FROM DAMAGE DUE TO HIS OPERATIONS.

THE FINISHED EARTHWORK SHALL HAVE A VEGETATION SUSTAINING SOIL COVERING THE TOP FOUR INCHES IN AREAS TO BE SEEDED OR SODDED. THE VEGETATION SUSTAINING SOIL REQUIRED WILL NOT BE PAID FOR SEPARATELY BUT SHALL BE INCLUDED IN THE COST OF FURNISHED EXCAVATION.

ON EXISTING PAVEMENT WHICH MAY BE SUPERELEVATED, THE NEW BITUMINOUS PAVEMENT SHALL BE BUILT WITH THE SAME SUPERELEVATION UNLESS NEW SUPERELEVATION RATES ARE GIVEN ON THE PLANS.

ALL ELEVATIONS REFERRING TO U.S.G.S. MEAN SEA LEVEL DATUM.

ABANDONED UNDERGROUND UTILITIES THAT CONFLICT WITH CONSTRUCTION SHALL BE DISPOSED OF OUTSIDE THE LIMITS OF THE RIGHT OF WAY ACCORDING TO ARTICLE 202.03 OF THE STANDARD SPECIFICATIONS AND AS DIRECTED BY THE ENGINEER. THIS WORK WILL NOT BE PAID FOR SEPARATELY BUT SHALL BE INCLUDED IN THE COST OF EARTH EXCAVATION.

ANY REFERENCE TO A STANDARD IN THESE PLANS SHALL BE INTERPRETED TO MEAN THE EDITION AS INDICATED BY THE SUBNUMBER LISTED ON THE INDEX OF SHEETS OR THE COPY OF THE STANDARD INCLUDED IN THESE PLANS.

THE FOLLOWING RATES OF APPLICATION HAVE BEEN USED IN CALCULATING PLAN QUANTITIES:

GRANULAR MATERIALS	2.05	TONS / CU YD
BITUMINOUS MAT PRIME COAT	0.08	GAL / SQ YD OR
	0.375	GAL / SQ YD
AGGREGATE PRIME COAT	0.002	TONS / SQ YD
BITUMINOUS RESURFACING	112	LBS / SQ YD / IN
SHORT TERM PAVEMENT MARKING	10	FT /100 FT OF APPLICATION
MIX FOR CRACKS, JTS & FLGWYS	0.0003	TONS / SQ YD
LEVEL BINDER (HAND METHOD)	0.0005	TONS / SQ YD
TEMPORARY DITCH CHECKS	9	BALES OR
	5	TONS AGGREGATE

THE CONTRACTOR'S ATTENTION IS DIRECTED TO THE PRESENCE OF DEPARTMENT-OWNED UNDERGROUND ELECTRICAL CABLE WITHIN THE LIMITS OF THE PROPOSED IMPROVEMENT. THE CONTRACTOR SHALL REQUEST THE ILLINOIS DEPARTMENT OF TRANSPORTATION IN OTTAWA (815-434-8417) TO LOCATE THE UNDERGROUND FACILITIES, PROVIDING A MINIMUM OF 72 HOURS NOTICE. THE DEPARTMENT IS NOT A MEMBER OF THE JOINT UTILITY LOCATING INFORMATION FOR EXCAVATORS (JULIE) SYSTEM.

ALL DAMAGE TO DEPARTMENT OWNED UNDERGROUND FACILITIES, CAUSED BY THE CONTRACTOR SHALL BE REPAIRED TO THE SATISFACTION OF THE DEPARTMENT AT THE CONTRACTOR'S EXPENSE. THIS SHALL INCLUDE ALL TEMPORARY REPAIRS REQUIRED TO KEEP THE FACILITY OPERATIONAL WHILE MATERIAL IS BEING OBTAINED TO MAKE PERMANENT REPAIRS. SPLICING OF ELECTRIC CABLE SHALL NOT BE ALLOWED. ELECTRIC CABLE SHALL BE REPLACED FROM POLE TO POLE OR CONTROLLER.

THE COST OF MAKING ANY SEWER CONNECTIONS TO AN EXISTING DRAINAGE STRUCTURE OR PIPE SHALL BE INCLUDED IN THE COST OF THE NEW SEWER.

MEMBERS OF JULIE KNOWN TO BE WITHIN THE LIMITS OF THE IMPROVEMENT ARE:

- Marathon Pipeline
- Comcast Cable
- Verizon
- Eastern Illini Electric

STANDARDS

- 000001-04 STANDARD SYMBOLS, ABBREVIATIONS AND PATTERNS
- 280001-02 TEMPORARY EROSION CONTROL SYSTEMS
- 482001 BITUMINOUS SHOULDER ADJACENT TO FLEXIBLE PAVEMENT
- 482011-01 BIT. SHOULDER STRIPS/SHOULDERS WITH RS OR WIDENING & RS PROJECTS
- 542401 METAL END SECTION FOR PIPE CULVERTS
- 601101 CONCRETE HEADWALL FOR PIPE DRAINS
- 606001-02 CONCRETE CURB TYPE B AND COMBINATION CONCRETE CURB AND GUTTER
- 666001 RIGHT-OF-WAY MARKERS
- 701001-01 OFF-ROAD OPERATIONS 2L, 2W, MORE THAN 4.5 m (15') AWAY
- 701006-0 OFF-ROAD OPERATIONS 2L, 2W, 4.5 m (15') TO 600 mm (24") FROM PAVEMENT EDGE
- 701201-02 LANE CLOSURE, 2L, 2W, DAY ONLY, FOR SPEEDS P 45 MPH
- 701306-01 LANE CLOSURE, 2L, 2W, SLOW MOVING OPERATIONS DAY ONLY, FOR SPEEDS P 45 MPH
- 701326-02 LANE CLOSURE, 2L, 2W, PAVEMENT WIDENING, FOR SPEEDS P 45 MPH
- 702001-05 TRAFFIC CONTROL DEVICES
- 720001 SIGN PANEL MOUNTING DETAILS
- 720006 SIGN PANEL ERECTION DETAILS
- 780001-01 TYPICAL PAVEMENT MARKINGS
- 805001 ELECTRICAL SERVICE INSTALLATION DETAILS
- 814001 CONCRETE HANDHOLES
- 878001-03 CONCRETE FOUNDATION DETAILS
- 880001 SPAN WIRE MOUNTED SIGNALS AND FLASHING BEACON INSTALLATION

STATE OF ILLINOIS
DEPARTMENT OF TRANSPORTATION
DISTRICT THREE

PREPARED BY: Thomas R. Sandken
DISTRICT STUDIES & PLANS ENGINEER

DATE: 2/14/05

EXAMINED BY: John K. [Signature]
DISTRICT CONSTRUCTION ENGINEER

Thomas R. Sandken
DISTRICT MATERIALS ENGINEER

James A. [Signature]
DISTRICT OPERATIONS ENGINEER

REVISIONS		ILLINOIS DEPARTMENT OF TRANSPORTATION
NAME	DATE	
		<p>GENERAL NOTES & STANDARDS</p> <p>SCALE: VERT. _____ HORIZ. _____</p> <p>DATE _____ DRAWN BY _____ CHECKED BY _____</p>

SUMMARY OF QUANTITIES

F.A.P. RTE.	SECTION	COUNTY	TOTAL SHEETS	SHEET NO.
681	118 N	IROQUOIS	30	3
STA.		TO STA.		
FED. ROAD DIST. NO.	ILLINOIS	FED. AID PROJECT		

CODE NO.	ITEM	UNIT	CONSTRUCTION CODE TYPE:			
			90% FED 10% STATE	LIGHTING Y030-1E	SIGNALS Y031-1F	ROADWAY I000-1A
20200100	EARTH EXCAVATION	CU YD	4572			4572
20400800	FURNISHED EXCAVATION	CU YD	846			846
20800150	TRENCH BACKFILL	CU YD	36			36
25000210	SEEDING, CLASS 2A	ACRE	0.97			0.97
25000400	NITROGEN FERTILIZER NUTRIENT	POUND	87.3			87.3
25000500	PHOSPHOROUS FERTILIZER NUTRIENT	POUND	87.3			87.3
25000600	POTASSIUM FERTILIZER NUTRIENT	POUND	87.3			87.3
25100115	MULCH, METHOD 2	ACRE	0.73			0.73
25100630	EROSION CONTROL BLANKET	SQ YD	1164			1164
28000250	TEMPORARY EROSION CONTROL SEEDING	POUND	582			582
28000300	TEMPORARY DITCH CHECKS	EACH	6			6
28000500	INLET AND PIPE PROTECTION	EACH	1			1
31100300	SUB-BASE GRANULAR MATERIAL, TYPE A 4"	SQ YD	744			744
40600100	BITUMINOUS MATERIALS (PRIME COAT)	GALLON	379.5			379.5
40600300	AGGREGATE (PRIME COAT)	TON	9.5			9.5
40600400	MIXTURE FOR CRACKS, JOINTS, AND FLANGWAYS	TON	1.4			1.4
40600980	BITUMINOUS SURFACE REMOVAL - BUTT JOINT	SQ YD	640			640
40600990	TEMPORARY RAMP	SQ YD	53.2			53.2
44201831	CLASS D PATCHES, TYPE III, 15 INCH	SQ YD	20			20
48101200	AGGREGATE SHOULDERS, TYPE B	TON	30.4			30.4
48202600	BITUMINOUS SHOULDERS SUPERPAVE 8"	SQ YD	673.3			673.3
50104300	CONCRETE HEADWALL REMOVAL	CU YD	13.8			13.8
50104400	CONCRETE HEADWALL REMOVAL	EACH	2			2
50800105	REINFORCEMENT BARS	POUND	652			652
54002020	EXPANSION BOLTS 3/4 INCH	EACH	64			64
54021003	PRECAST CONCRETE BOX CULVERT 10' X 3' (M273)	FOOT	83			83
542A1063	PIPE CULVERTS, CLASS A, TYPE 2 18"	FOOT	77			77
54213663	PRECAST REINFORCED CONCRETE FLARED END SECTIONS 18"	EACH	2			2
54248500	CONCRETE HEADWALLS	CU YD	9.2			9.2
54248510	CONCRETE COLLAR	CU YD	1.28			1.28
60100915	PIPE DRAINS 6"	FOOT	20			20
60625800	ISLAND PAVEMENT (SPECIAL)	SQ YD	95.7			95.7
61100605	MISCELLANEOUS CONCRETE	CU YD	0.5			0.5
66600105	FURNISHING AND ERECTING RIGHT-OF-WAY MARKERS	EACH	15			15
67000400	ENGINEER'S FIELD OFFICE TYPE A	CAL MO	4			4
67100100	MOBILIZATION	L SUM	1			1
70100450	TRAFFIC CONTROL AND PROTECTION, STANDARD 701201	L SUM	1			1
70100460	TRAFFIC CONTROL AND PROTECTION, STANDARD 701306	L SUM	1			1
70100500	TRAFFIC CONTROL AND PROTECTION, STANDARD 701326	L SUM	1			1
70103815	TRAFFIC CONTROL AND SURVEILLANCE	CAL DA	35			35
70300100	SHORT-TERM PAVEMENT MARKING	FCOT	1432			1432
70300220	TEMPORARY PAVEMENT MARKING - LINE 4"	FCOT	2920			2920
70300250	TEMPORARY PAVEMENT MARKING - LINE 8"	FCOT	696			696
70300260	TEMPORARY PAVEMENT MARKING - LINE 12"	FCOT	705			705
70300280	TEMPORARY PAVEMENT MARKING - LINE 24"	FCOT	120			120

ILLINOIS DEPARTMENT OF TRANSPORTATION

SUMMARY OF QUANTITIES

SCALE: VERT. DATE: HORIZ. DRAWN BY: CHECKED BY:

F.A.P. RTE.	SECTION	COUNTY	TOTAL SHEETS	SHEET NO.
681	118 N	IRROQUOIS	30	4
STA.		TO STA.		
FED. ROAD DIST. NO.	ILLINOIS	FED. AID PROJECT		

SUMMARY OF QUANTITIES

CODE NO.	ITEM	UNIT	90% FED 10% STATE		CONSTRUCTION CODE TYPE:		
			TOTAL QUANTITY	LIGHTING YO30-1E		SIGNALS YO31-1F	ROADWAY IOO0-1A
70301000	WORK ZONE PAVEMENT MARKING REMOVAL	SQ FT	238				238
* 72000100	SIGN PANEL - TYPE 1	SQ FT	122				122
72400200	REMOVE SIGN PANEL ASSEMBLY - TYPE B	EACH	8				8
72400600	RELOCATE SIGN PANEL ASSEMBLY - TYPE B	EACH	6				6
73000100	WOOD SIGN SUPPORT	FOOT	220				220
73200100	CONCRETE FOUNDATIONS FOR WOOD SIGN SUPPORT	EACH	6.6				6.6
78000200	THERMOPLASTIC PAVEMENT MARKING - LINE 4"	FOOT	2920				2920
78000500	THERMOPLASTIC PAVEMENT MARKING - LINE 8"	FOOT	696				696
78000600	THERMOPLASTIC PAVEMENT MARKING - LINE 12"	FOOT	705				705
78000650	THERMOPLASTIC PAVEMENT MARKING - LINE 24"	FOOT	120				120
* [REDACTED]	[REDACTED]	[REDACTED]	[REDACTED]				[REDACTED]
78200300	PRISMATIC CURB REFLECTOR	EACH	36				36
80500105	SERVICE INSTALLATION, TYPE A (MODIFIED)	EACH	1			1	
81012500	CONDUIT IN TRENCH, 1 1/2" DIA., PVC	FOOT	1609	50		1559	
81021350	CONDUIT PUSHED, 3" DIA., PVC	FOOT	421	210		211	
81102600	CONDUIT ATTACHED TO STRUCTURE, 2" DIA., PVC	FOOT	40			40	
81400400	CONCRETE HANDHOLE	EACH	8	4		4	
81500200	TRENCH AND BACKFILL FOR ELECTRICAL WORK	FOOT	1870	181		1689	
81702450	ELECTRIC CABLE IN CONDUIT, 600V (XLP-TYPE USE) 3-1/C NO. 10	FOOT	480	480			
82103900	LUMINAIRE, SODIUM VAPOR, MULTI-MOUNT, 250 WATT	EACH	4	4			
82500605	LIGHTING CONTROLLER PHOTOCCELL RELAY	EACH	1	1			
83800650	BREAKAWAY DEVICE, COUPLING, SS SCREEN	EACH	8	8			
85000500	MAINTENANCE OF EXISTING FLASHING BEACON INSTALLATION	EACH	1			1	
85800100	FLASHER CONTROLLER	EACH	1			1	
87200400	SPAN WIRE	FOOT	175			175	
87200500	TETHER WIRE	FOOT	175			175	
87301215	ELECTRIC CABLE IN CONDUIT, SIGNAL NO. 14 2C	FOOT	2254			2254	
87302245	ELECTRIC CABLE AERIAL SUSPENDED, SIGNAL, NO. 14 5C	FOOT	210	62		148	
87800415	CONCRETE FOUNDATION, TYPE E 36-INCH DIAMETER	FOOT	24	24			
89502300	REMOVE ELECTRIC CABLE FROM CONDUIT	FOOT	2036			2036	
89502380	REMOVE EXISTING HANDHOLE	EACH	1	1			
89502400	REMOVE EXISTING FLASHING BEACON INSTALLATION COMPLETE	EACH	4			4	
X0322189	REMOVE EXISTING LIGHTING SYSTEM NO SALVAGE	L SUM	1	1			
X0323148	REMOVE EXISTING SERVICE INSTALLATION TYPE A	EACH	1	0.5		0.5	
X3550705	BITUMINOUS BASE COURSE SUPERPAVE 10 1/4"	SQ YD	800				800
X4066416	BITUMINOUS CONCRETE SURFACE COURSE, SUPERPAVE, MIX "C", N70	TON	398.5				398.5
X4066740	LEVELING BINDER (HAND METHOD), SUPERPAVE N70	TON	2.4				2.4
X4066770	LEVELING BINDER (MACHINE METHOD), SUPERPAVE N70	TON	229.9				229.9
X7015100	PORTABLE CHANGEABLE MESSAGE SIGN	EACH	2				2
X8801100	SIGNAL HEAD, POLYCARBONATE, LED, 1-FACE, 1-SECTION, POST MOUNTED	EACH	4			4	
X8801505	SIGNAL HEAD, POLYCARBONATE, LED, 4-FACE, 1-SECTION, SPAN WIRE MOUNTED	EACH	1			1	
Z0001050	AGGREGATE SUBGRADE 12"	SQ YD	780				780
Z0023600	FILLING EXISTING CULVERTS	EACH	1				1
X0324990	STEEL STRAIN POLE 45 FEET	EACH	2	2			

• SPECIALTY ITEMS

© SFTY-3C

ILLINOIS DEPARTMENT OF TRANSPORTATION

SUMMARY OF QUANTITIES

SCALE: VERT. _____ DATE _____
 HORIZ. _____
 DRAWN BY _____
 CHECKED BY _____

2/11/2005 01:40:00 PM C:\PROJETS\66534\DRAWING\118N.DWG

F.A.P. RTE.	SECTION	COUNTY	TOTAL SHEETS	SHEET NO.
681	118 N	IROQUOIS	30	6
STA.		TO STA.		
FED. ROAD DIST. NO.		ILLINOIS FED. AID PROJECT		

SIGN SCHEDULE

LOCATION	TYPE	SIGN PANEL TYPE 1	WOOD SIGN SUPPORT	CONCRETE FOUNDATIONS	REMOVE SIGN PANEL ASSEMBLY	RELOCATE SIGN PANEL ASSEMBLY	PORTABLE CHANGEABLE MESSAGE SIGN
STA. OFFSET		SQ FT	FOOT	CU YD	EACH	EACH	EACH
STA 241+41, 49' LT	RI-1 (30X30)	6.25	10	0.3			
STA 241+51, 56' RT	RI-1 (30X30)	6.25	10	0.3			
STA 241+74, 26' RT	RI-1 (30X30)	6.25	10	0.3			
STA 241+74, 25' LT	RI-1 (30X30)	6.25	10	0.3			
STA 242+25, 25' LT	RI-1 (30X30)	6.25	10	0.3			
STA 242+25, 27' RT	RI-1 (30X30)	6.25	10	0.3			
STA 242+49, 55' LT	RI-1 (30X30)	6.25	10	0.3			
STA 242+59, 50' RT	RI-1 (30X30)	6.25	10	0.3			
STA 241+40, 29' RT			10	0.3			
STA 241+40, 31' RT			10	0.3			
STA 241+40, 33' RT			10	0.3			
STA 242+57, 26' LT			10	0.3			
STA 242+57, 28' LT			10	0.3			
STA 242+57, 30' LT			10	0.3			
STA 231+12, 25' LT					1		
STA 231+12, 25' RT					1		
STA 252+88, 22' LT					1		
STA 252+88, 22' RT					1		
STA 241+40, 26' LT	RI-1 (30X30)				1		
STA 241+40, 25' RT	RI-1 (30X30)				1		
STA 242+57, 22' LT	RI-1 (30X30)				1		
STA 242+57, 25' RT	RI-1 (30X30)				1		
STA 237+24, 18' LT	W3-1 (36X36)	9	10	0.3			
STA 237+24, 18' RT	W3-1 (36X36)	9	10	0.3			
STA 817+77, 19' LT	W3-1 (36X36)	9	10	0.3			
STA 817+77, 19' RT	W3-1 (36X36)	9	10	0.3			
STA 827+38, 19' LT	W3-1 (36X36)	9	10	0.3			
STA 827+38, 19' RT	W3-1 (36X36)	9	10	0.3			
STA 246+75, 17' LT	W3-1 (36X36)	9	10	0.3			
STA 246+75, 17' RT	W3-1 (36X36)	9	10	0.3			
TOTAL		122	220	6.6	8	6	2

* YELLOW FLASHING BEACONS MOUNTED ACCORDING TO LIGHTING DETAIL

THERMOPLASTIC PAVEMENT MARKINGS

LOCATION	LENGTH	THERMO PVMT MK MARKING LINE 4"	THERMO PVMT MK MARKING LINE 8"	THERMO PVMT MK MARKING LINE 12"		THERMO PVMT MK MARKING LINE 24"
		YELLOW	WHITE	WHITE	YELLOW	YELLOW
IROQUOIS COUNTY	LIN FT	LIN FT	LIN FT	LIN FT	LIN FT	LIN FT
STA 239+00 TO STA 240+00	100	200				
STA 240+00 TO STA 240+55	55.0	110				
STA 240+55 TO STA 241+55	100.0	400			16.1	
STA 241+55 TO STA 242+45	90.0	40				
STA 242+45 TO STA 243+45	100.0	400			15.8	
STA 243+45 TO STA 244+00	55.0	110				
STA 244+00 TO STA 245+00	100.0	200				
STA 819+50 TO STA 820+50	100.0	200				
STA 820+50 TO STA 821+10	60.0	120				
STA 821+10 TO STA 822+10	100.0	400			16.0	
STA 822+10 TO STA 823+00	90.0	40				
STA 823+00 TO STA 824+00	100.0	400			15.8	
STA 824+00 TO STA 824+50	50.0	100				
STA 824+50 TO 825+50	100.0	200				
NW ISLAND			171		160	
NE ISLAND			169		156	
SE ISLAND			186		165	
SW ISLAND			170		160	
* STOP BARS						120
TOTAL	1200.0	2920	696	641	64	120

* SEE PAVEMENT MARKING SHEET FOR LOCATIONS OF STOP BARS

DRAINAGE SCHEDULE

STATION	INFLOW ELEVATION	OUTFLOW ELEVATION	GRADE	CONCRETE HEADWALLS	FILLING EXISTING CULVERTS	CONCRETE COLLAR	EXPANSION BOLTS 3/4" DIA.	MISCELLANEOUS CONCRETE	PIPE DRAIN 6"	REINFORCEMENT BARS	CONCRETE HEADWALL REMOVAL	TRENCH BACKFILL	CONCRETE HEADWALL REMOVAL	PRECAST CONCRETE BOX CULVERT M 273 10' X 3'	PIPE CULVERT CLASS A TYPE 2, 18"	PRECAST REINFORCED CONCRETE FLARED END SECTION 18"
			%	CU YD	EACH	CU YD	EACH	CU YD	FOOT	LBS	EACH	CU YD	CU YD	FOOT	FOOT	EACH
241+00	629.70	629.20	0.56													
241+50					1							36			77	2
822+00 RT	629.18		0.28	4.6		0.64	32			326	2		4.6	39		
822+00 LT		628.77		4.6		0.64	32			326			9.2	44		
FIELD TILE CONTINGENCY ITEMS																
TOTAL				9.2	1	1.28	64	0.5	20	652	2	36	13.8	83	77	2

TEMPORARY PAVEMENT MARKINGS

LOCATION	LENGTH	TEMPORARY PVMT MK MARKING LINE 4"	TEMPORARY PVMT MK MARKING LINE 8"	TEMPORARY PVMT MK MARKING LINE 12"	TEMPORARY PVMT MK MARKING LINE 24"	SHORT TERM PAVEMENT MARKING	WORK ZONE PAVT MARKING REMOVAL
		YELLOW	WHITE	WHITE	YELLOW	YELLOW	YELLOW
IROQUOIS COUNTY	LIN FT	LIN FT	LIN FT	LIN FT	LIN FT	LIN FT	SQ FT
STA 239+00 TO STA 240+00	100.0	200				40	6.7
STA 240+00 TO STA 240+55	55.0	110				22	3.7
STA 240+55 TO STA 241+55	100.0	400			16.1	80	13.3
STA 241+55 TO STA 242+45	90.0	40				72	12.0
STA 242+45 TO STA 243+45	100.0	400			15.8	80	13.3
STA 243+45 TO STA 244+00	55.0	110				22	3.7
STA 244+00 TO STA 245+00	100.0	200				40	6.7
STA 819+50 TO STA 820+50	100.0	200				40	6.7
STA 820+50 TO STA 821+10	60.0	120				24	4.0
STA 821+10 TO STA 822+10	100.0	400			16.0	80	13.3
STA 822+10 TO STA 823+00	90.0	40				72	12.0
STA 823+00 TO STA 824+00	100.0	400			15.8	80	13.3
STA 824+00 TO STA 824+50	50.0	100				20	3.3
STA 824+50 TO 825+50	100.0	200				40	6.7
NW ISLAND			171		160		
NE ISLAND			169		156		
SE ISLAND			186		165		
SW ISLAND			170		160		
STOP BARS						120.0	119.9
TOTAL	1200.0	2920	696	641	64	1432	238

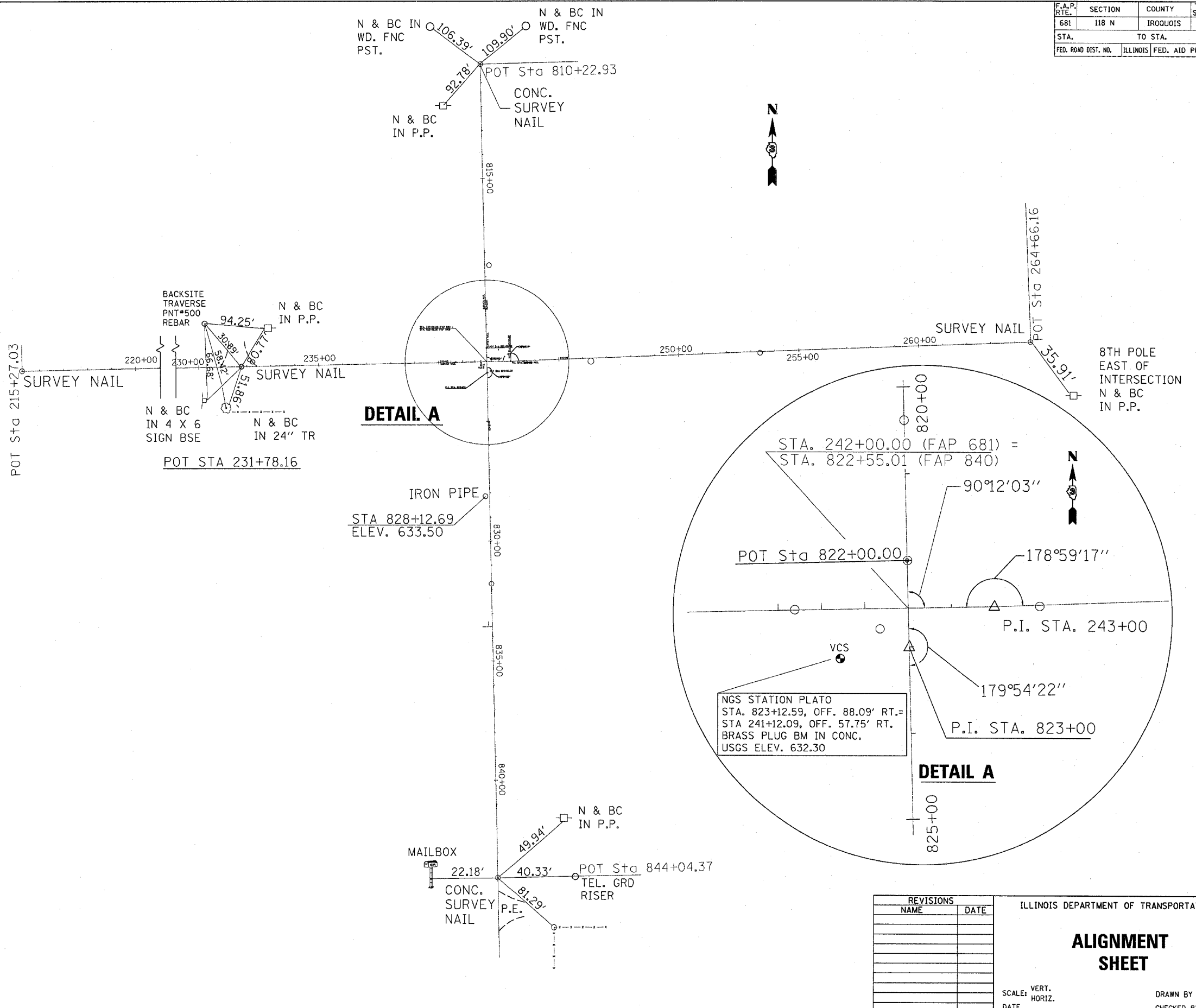
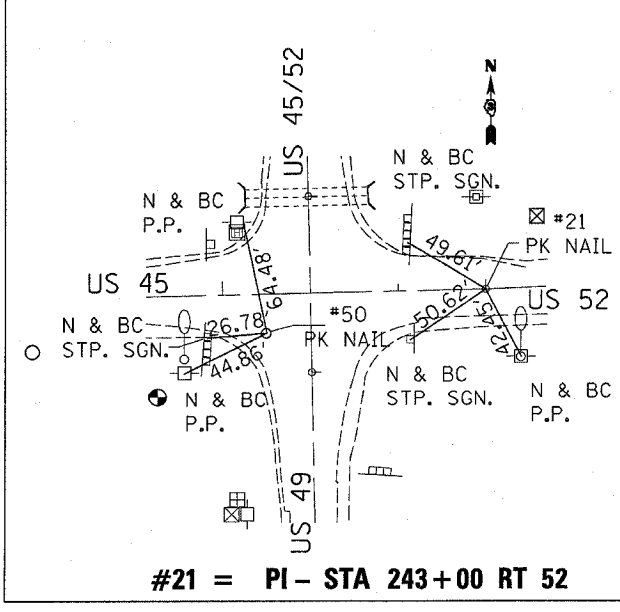
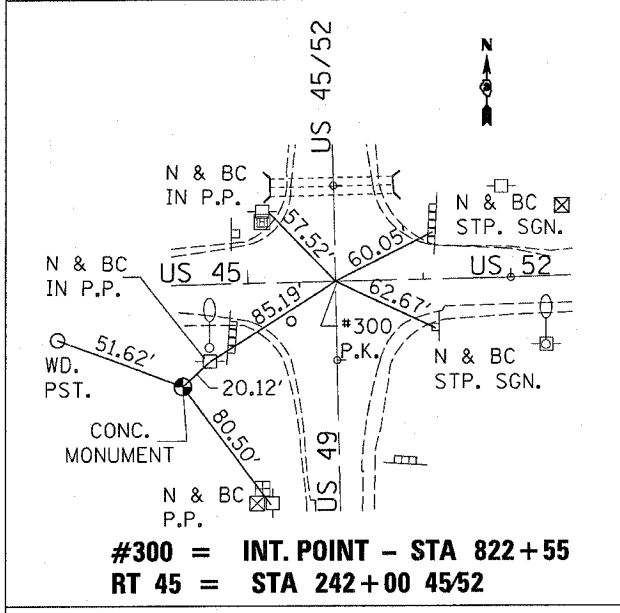
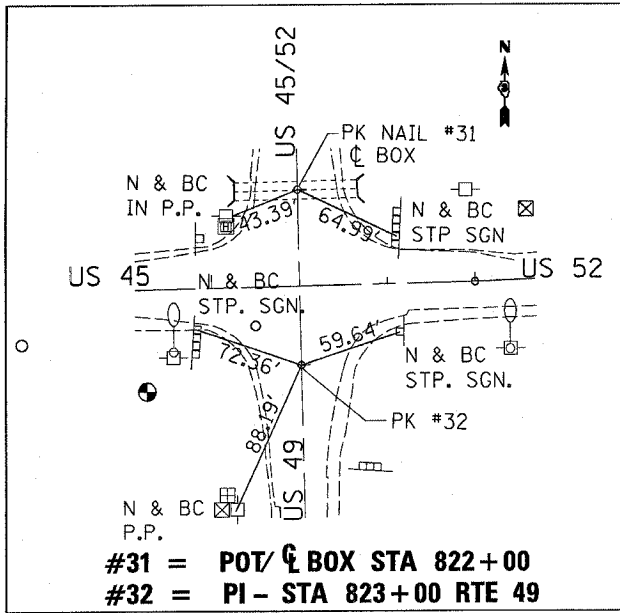
REVISIONS	
NAME	DATE

ILLINOIS DEPARTMENT OF TRANSPORTATION

SCHEDULES

SCALE: VERT. DATE
HORIZ. DATE
DRAWN BY
CHECKED BY

F.A.P. RTE.	SECTION	COUNTY	TOTAL SHEETS	SHEET NO.
681	118 N	IROQUOIS	30	8
STA.		TO STA.		
FED. ROAD DIST. NO.		ILLINOIS FED. AID PROJECT		



REVISIONS	
NAME	DATE

ILLINOIS DEPARTMENT OF TRANSPORTATION

ALIGNMENT SHEET

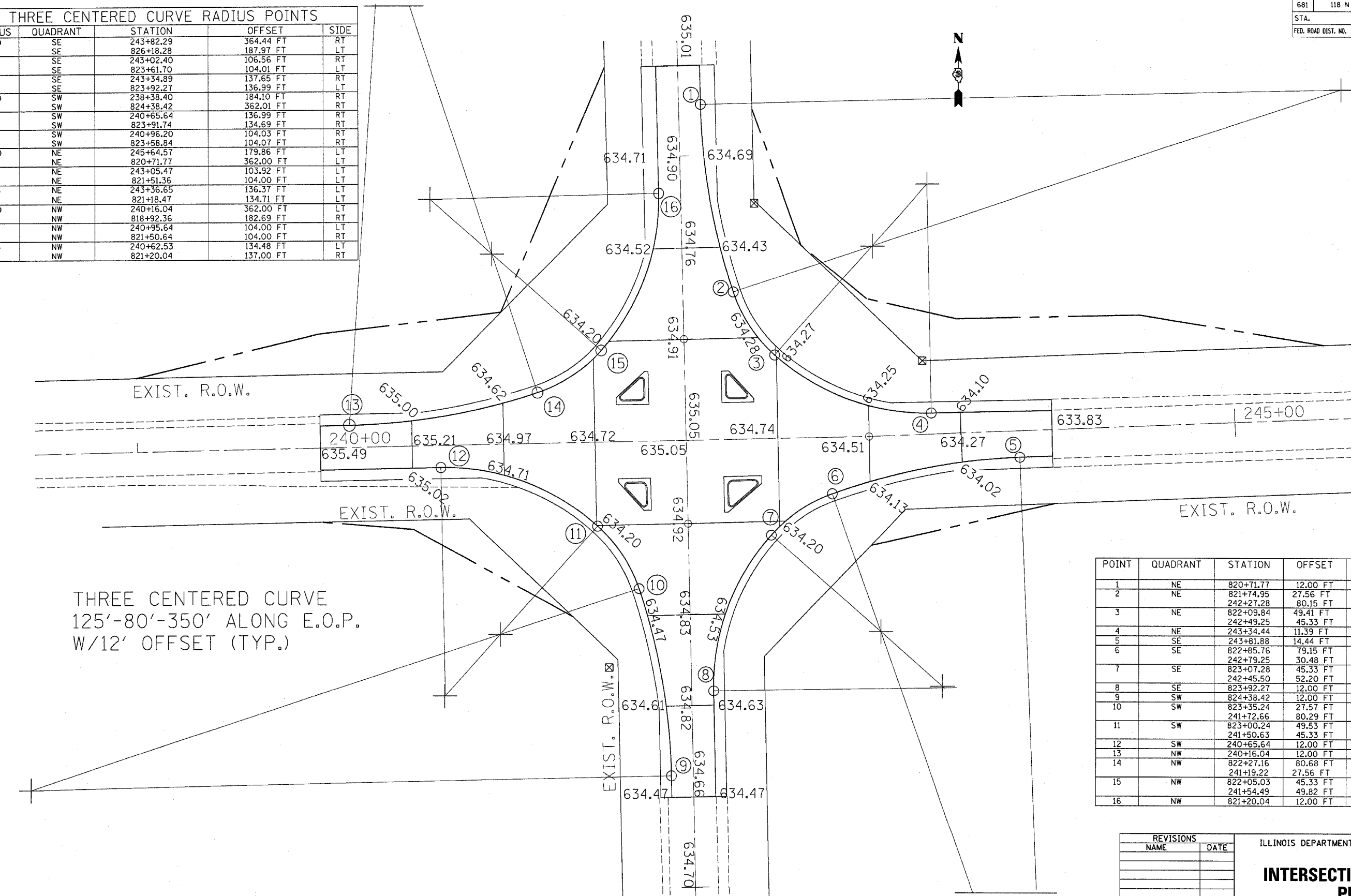
SCALE: VERT. _____
 HORIZ. _____
 DATE _____

DRAWN BY _____
 CHECKED BY _____

2/14/2005 c:\pro\ecds\ep02704\def011.s.dgn

F.A.P. RTE.	SECTION	COUNTY	TOTAL SHEETS	SHEET NO.
681	118 N	IROQUOIS	30	10
STA.	TO STA.			
FED. ROAD DIST. NO.	ILLINOIS	FED. AID PROJECT		

RADIUS	QUADRANT	STATION	OFFSET	SIDE
350	SE	243+82.29	364.44 FT	RT
	SE	826+18.28	187.97 FT	LT
80	SE	243+02.40	106.56 FT	RT
	SE	823+61.70	104.01 FT	LT
125	SE	243+34.89	137.65 FT	RT
	SE	823+92.27	136.99 FT	LT
350	SW	238+38.40	184.10 FT	RT
	SW	824+38.42	362.01 FT	RT
80	SW	240+65.64	136.99 FT	RT
	SW	823+91.74	134.69 FT	RT
125	SW	240+96.20	104.03 FT	RT
	SW	823+58.84	104.07 FT	RT
350	NE	245+64.57	179.86 FT	LT
	NE	820+71.77	362.00 FT	LT
80	NE	243+05.47	103.92 FT	LT
	NE	821+51.36	104.00 FT	LT
125	NE	243+36.65	136.37 FT	LT
	NE	821+18.47	134.71 FT	LT
350	NW	240+16.04	362.00 FT	LT
	NW	818+92.36	182.69 FT	RT
80	NW	240+95.64	104.00 FT	LT
	NW	821+50.64	104.00 FT	RT
125	NW	240+62.53	134.48 FT	LT
	NW	821+20.04	137.00 FT	RT



THREE CENTERED CURVE
125'-80'-350' ALONG E.O.P.
W/12' OFFSET (TYP.)

POINT	QUADRANT	STATION	OFFSET	SIDE
1	NE	820+71.77	12.00 FT	LT
2	NE	821+74.95	27.56 FT	LT
		242+27.28	80.15 FT	LT
3	NE	822+09.84	49.41 FT	LT
		242+49.25	45.33 FT	LT
4	NE	243+34.44	11.39 FT	LT
5	SE	243+81.88	14.44 FT	RT
6	SE	822+85.76	79.15 FT	LT
		242+79.25	30.48 FT	RT
7	SE	823+07.28	45.33 FT	LT
		242+45.50	52.20 FT	RT
8	SE	823+92.27	12.00 FT	LT
9	SW	824+38.42	12.00 FT	RT
10	SW	823+35.24	27.57 FT	RT
		241+72.66	80.29 FT	RT
11	SW	823+00.24	49.53 FT	RT
		241+50.63	45.33 FT	RT
12	SW	240+65.64	12.00 FT	RT
13	NW	240+16.04	12.00 FT	LT
14	NW	822+27.16	80.68 FT	RT
		241+19.22	27.56 FT	LT
15	NW	822+05.03	45.33 FT	RT
		241+54.49	49.82 FT	LT
16	NW	821+20.04	12.00 FT	RT

REVISIONS	
NAME	DATE

ILLINOIS DEPARTMENT OF TRANSPORTATION
INTERSECTION LAYOUT PLAN

SCALE: VERT. _____
HORIZ. _____
DATE _____ DRAWN BY _____
CHECKED BY _____

2/14/2005
c:\pro\ecfs\p02704\061011.s.dgn

F.A.P. RTE.	SECTION	COUNTY	TOTAL SHEETS	SHEET NO.
681	118 N	IROQUOIS	30	11
STA.		TO STA.		
FED. ROAD DIST. NO.		ILLINOIS FED. AID PROJECT		



STA 822+00 36' RT
CONCRETE HEADWALL
REMOVAL - 4.6 CU YD

STA 822+00 24' LT
CONCRETE HEADWALL
REMOVAL - 9.2 CU YD

STA. 822+00 RT PRECAST BOX
CULVERT M273 10' X 3' - 39 FT
CONCRETE COLLAR - .64 CUYD
CONCRETE HEADWALLS - 4.6 CU YD

STA. 822+00 LT PRECAST BOX
CULVERT M273 10' X 3' - 44 FT
CONCRETE COLLAR - .64 CUYD
CONCRETE HEADWALLS - 4.6 CU YD

FIELD TILE HEADWALL ACCORDING
TO DETAIL MISCELLANEOUS
CONCRETE - 0.5 CU YD

EXIST. 12" RCCP
FL= 628.80

FL= 629.48
FL= 629.04

FL= 628.83

EXIST. R.O.W.
FL= 629.64

12" FIELD TILE

240+00

US 45

18" CMP

US 52

245+00

15" CMP

EXIST. R.O.W.

FL= 629.67

EXIST. R.O.W.

STA. 241+00 PROP. PIPE CULV.
CL. A, TY. 2, 18" - 77 FT
2 EACH PRC FLARED END SECT. 18"
CLASS D TYPE III, 15"
PAVEMENT PATCH = 20 SY
36 CY TRENCH BACKFILL

USGS
BRASS PLUG
ELEV.= 632.30

STA. 241+50 REMOVE EXISTING
CONCRETE HEADWALLS - 2 EACH
FILL EXISTING CULVERT

EXIST. R.O.W.

IL 49

82

REVISIONS	
NAME	DATE

ILLINOIS DEPARTMENT OF TRANSPORTATION

DRAINAGE SHEET

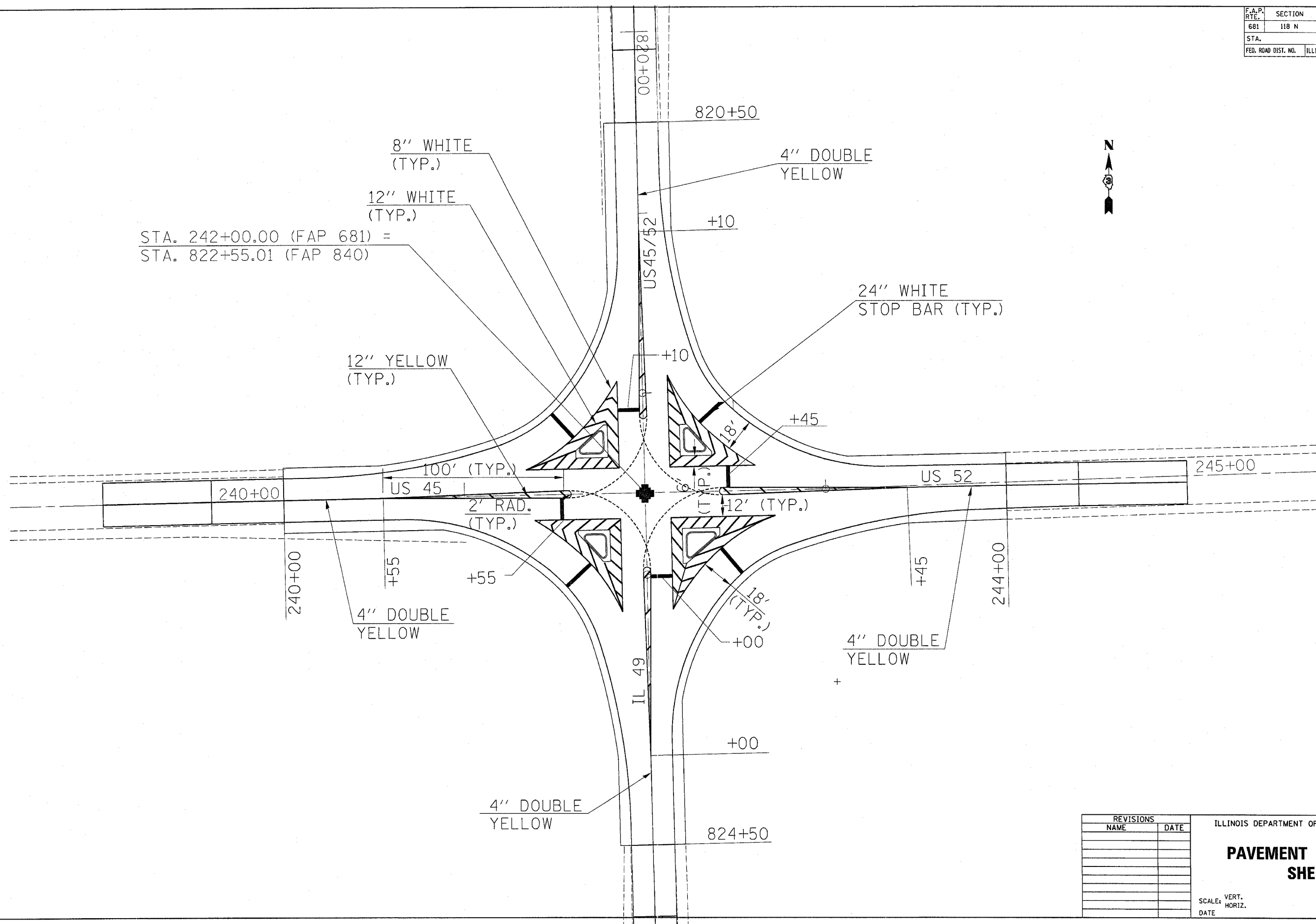
SCALE: VERT.
HORIZ.
DATE

DRAWN BY
CHECKED BY

F.A.P. RTE.	SECTION	COUNTY	TOTAL SHEETS	SHEET NO.
681	118 N	IROQUOIS	30	12
STA.		TO STA.		
FED. ROAD DIST. NO.		ILLINOIS FED. AID PROJECT		



STA. 242+00.00 (FAP 681) =
STA. 822+55.01 (FAP 840)



REVISIONS	
NAME	DATE

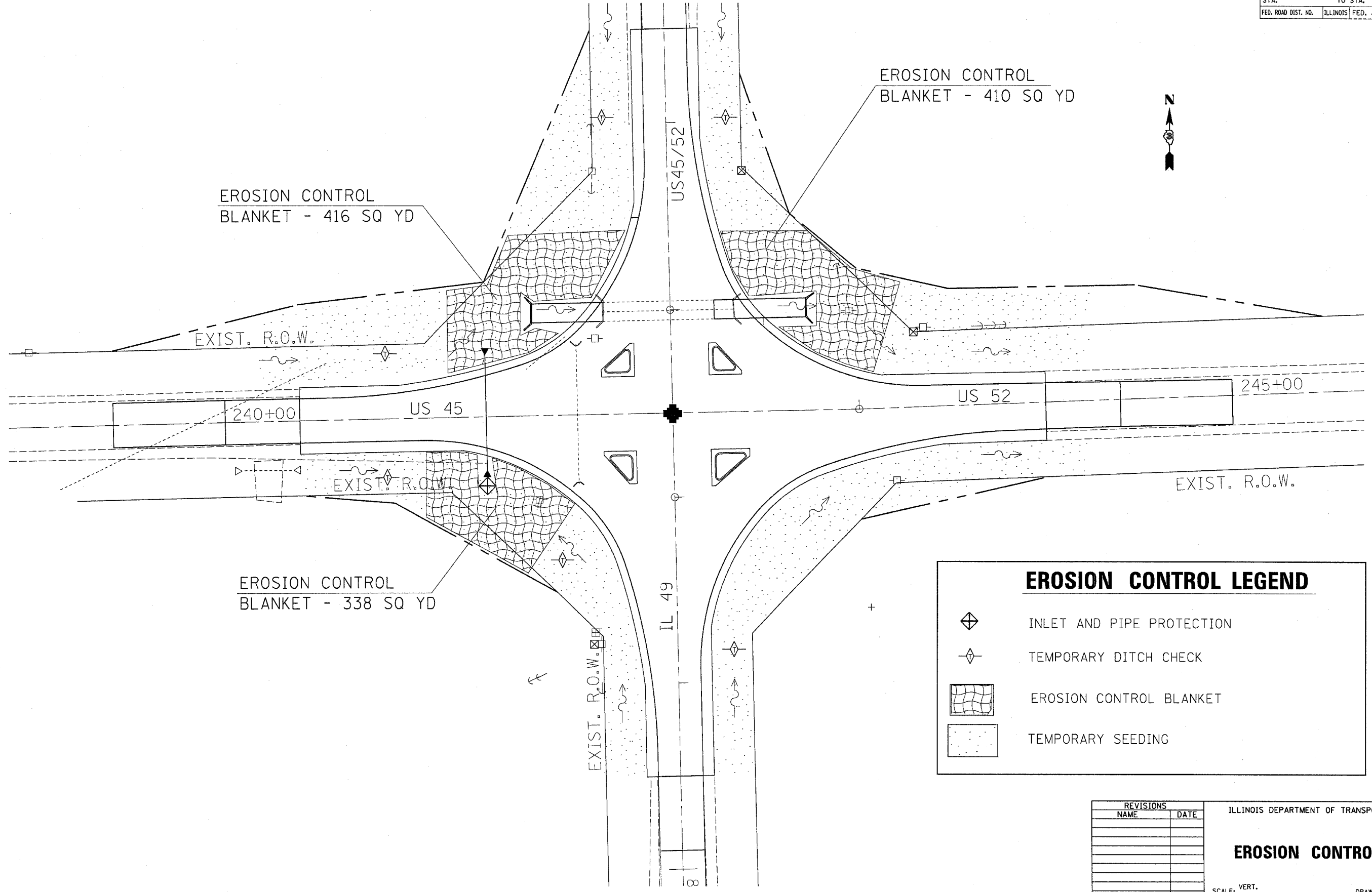
ILLINOIS DEPARTMENT OF TRANSPORTATION

PAVEMENT MARKING SHEET


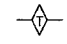

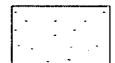
SCALE: VERT. _____
HORIZ. _____
DATE _____

DRAWN BY _____
CHECKED BY _____

F.A.P. RTE.	SECTION	COUNTY	TOTAL SHEETS	SHEET NO.
681	118 N	IROQUOIS	30	13
STA.		TO STA.		
FED. ROAD DIST. NO.		ILLINOIS FED. AID PROJECT		



EROSION CONTROL LEGEND

-  INLET AND PIPE PROTECTION
-  TEMPORARY DITCH CHECK
-  EROSION CONTROL BLANKET
-  TEMPORARY SEEDING

REVISIONS	
NAME	DATE

ILLINOIS DEPARTMENT OF TRANSPORTATION






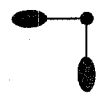

EROSION CONTROL SHEET

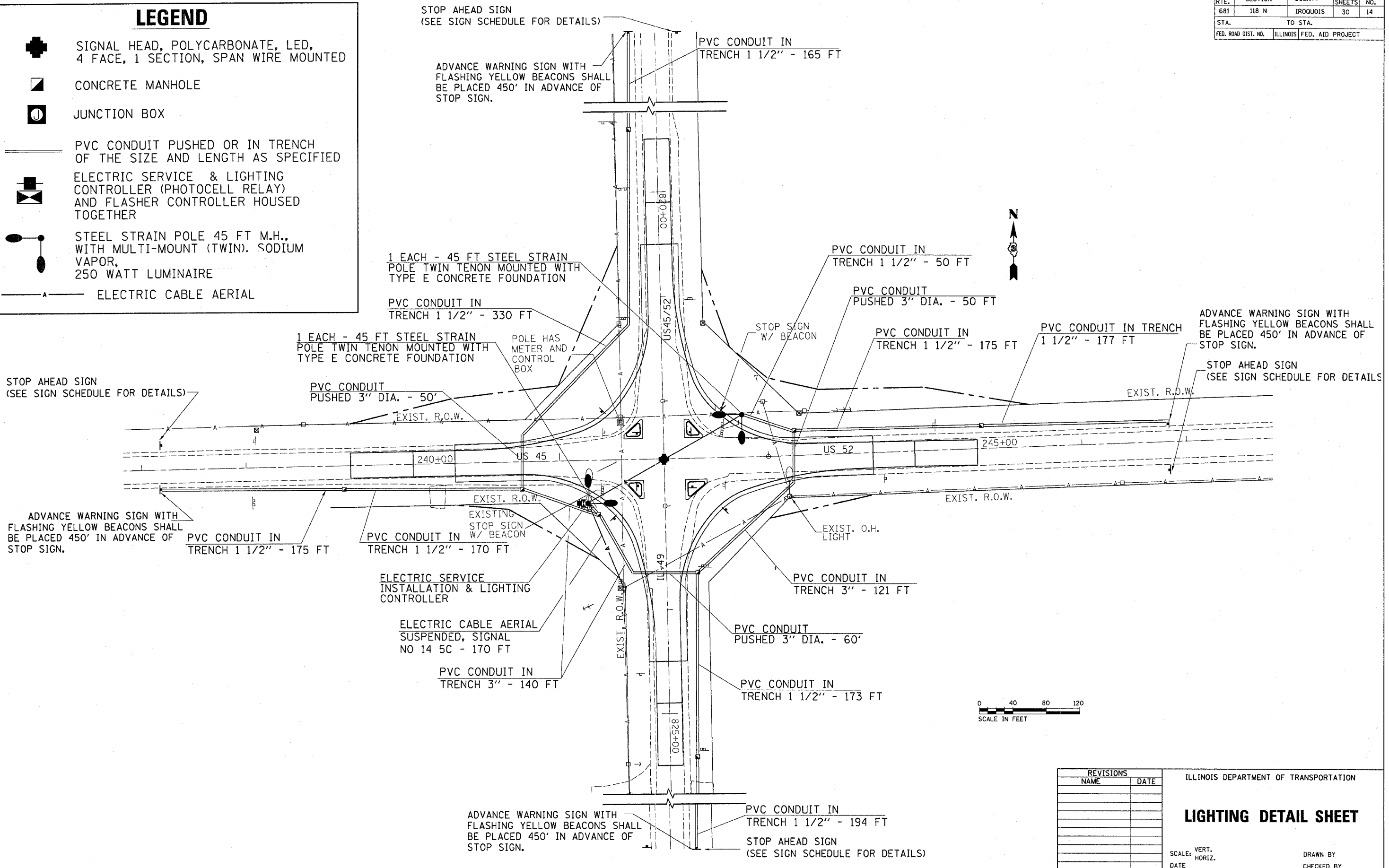
SCALE: VERT. _____
HORIZ. _____

DRAWN BY _____
CHECKED BY _____

F.A.P. RTE.	SECTION	COUNTY	TOTAL SHEETS	SHEET NO.
681	118 N	IRROQUOIS	30	14
STA.	TO STA.			
FED. ROAD DIST. NO.	ILLINOIS FED. AID PROJECT			

LEGEND

-  SIGNAL HEAD, POLYCARBONATE, LED, 4 FACE, 1 SECTION, SPAN WIRE MOUNTED
-  CONCRETE MANHOLE
-  JUNCTION BOX
-  PVC CONDUIT PUSHED OR IN TRENCH OF THE SIZE AND LENGTH AS SPECIFIED
-  ELECTRIC SERVICE & LIGHTING CONTROLLER (PHOTOCELL RELAY) AND FLASHER CONTROLLER HOUSED TOGETHER
-  STEEL STRAIN POLE 45 FT M.H., WITH MULTI-MOUNT (TWIN). SODIUM VAPOR, 250 WATT LUMINAIRE
-  ELECTRIC CABLE AERIAL



STOP AHEAD SIGN
(SEE SIGN SCHEDULE FOR DETAILS)

STOP AHEAD SIGN
(SEE SIGN SCHEDULE FOR DETAILS)

ADVANCE WARNING SIGN WITH FLASHING YELLOW BEACONS SHALL BE PLACED 450' IN ADVANCE OF STOP SIGN.

PVC CONDUIT IN TRENCH 1 1/2" - 165 FT

1 EACH - 45 FT STEEL STRAIN POLE TWIN TENON MOUNTED WITH TYPE E CONCRETE FOUNDATION

PVC CONDUIT IN TRENCH 1 1/2" - 50 FT

PVC CONDUIT IN TRENCH 1 1/2" - 330 FT

PVC CONDUIT PUSHED 3" DIA. - 50 FT

1 EACH - 45 FT STEEL STRAIN POLE TWIN TENON MOUNTED WITH TYPE E CONCRETE FOUNDATION

POLE HAS METER AND CONTROL BOX

PVC CONDUIT IN TRENCH 1 1/2" - 175 FT

PVC CONDUIT IN TRENCH 1 1/2" - 177 FT

ADVANCE WARNING SIGN WITH FLASHING YELLOW BEACONS SHALL BE PLACED 450' IN ADVANCE OF STOP SIGN.

STOP AHEAD SIGN
(SEE SIGN SCHEDULE FOR DETAILS)

PVC CONDUIT PUSHED 3" DIA. - 50'

STOP SIGN W/ BEACON

ADVANCE WARNING SIGN WITH FLASHING YELLOW BEACONS SHALL BE PLACED 450' IN ADVANCE OF STOP SIGN.

PVC CONDUIT IN TRENCH 1 1/2" - 175 FT

PVC CONDUIT IN TRENCH 1 1/2" - 170 FT

EXISTING STOP SIGN W/ BEACON

EXIST. O.H. LIGHT

ELECTRIC SERVICE INSTALLATION & LIGHTING CONTROLLER

PVC CONDUIT IN TRENCH 3" - 121 FT

ELECTRIC CABLE AERIAL SUSPENDED, SIGNAL NO 14 5C - 170 FT

PVC CONDUIT PUSHED 3" DIA. - 60'

PVC CONDUIT IN TRENCH 3" - 140 FT

PVC CONDUIT IN TRENCH 1 1/2" - 173 FT

0 40 80 120
SCALE IN FEET

ADVANCE WARNING SIGN WITH FLASHING YELLOW BEACONS SHALL BE PLACED 450' IN ADVANCE OF STOP SIGN.

PVC CONDUIT IN TRENCH 1 1/2" - 194 FT

STOP AHEAD SIGN
(SEE SIGN SCHEDULE FOR DETAILS)

REVISIONS	
NAME	DATE

ILLINOIS DEPARTMENT OF TRANSPORTATION

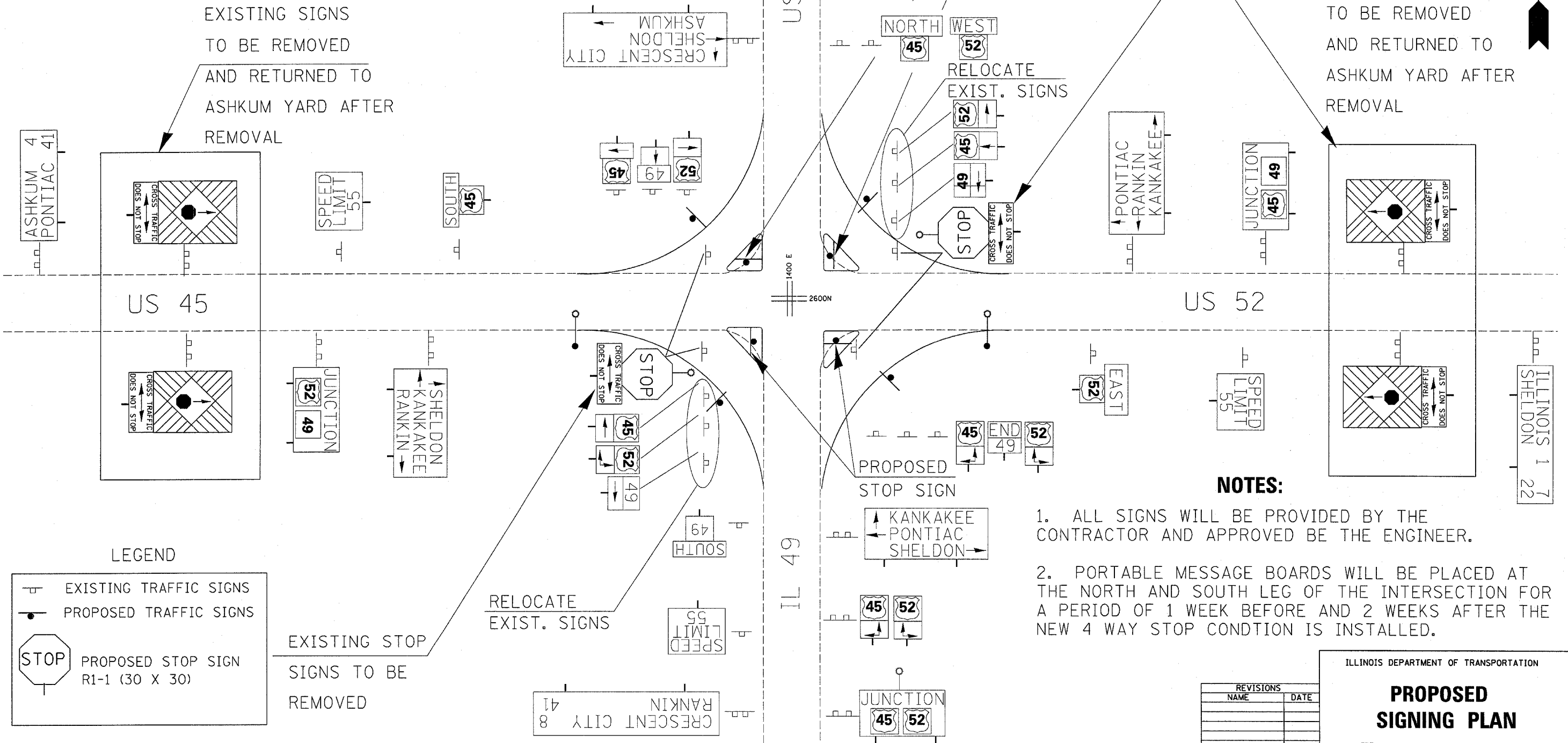
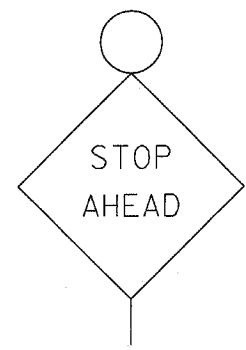
LIGHTING DETAIL SHEET

SCALE: VERT. HORIZ.
DATE

DRAWN BY
CHECKED BY

F. A. SHEET NO.	SECTION	COUNTY	TOTAL SHEETS	SHEET NO.
681	118 N	IROQUOIS	30	16
STA.	TO STA.			
FED. ROAD DIST. NO.	ILLINOIS	FED. AID PROJECT		

ADVANCE WARNING SIGNS WITH FLASHING YELLOW BEACONS PLACED 450 FT IN ADVANCE OF PROPOSED STOP SIGNS ON ALL LEGS OF INTERSECTION (SEE LIGHTING SHEET FOR NUMBER AND LOCATION)

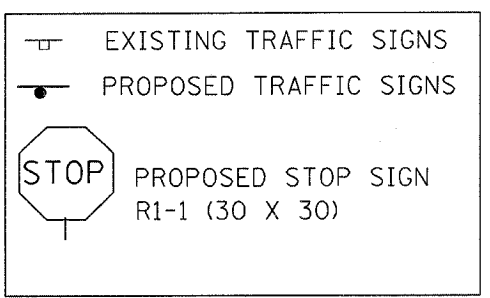


EXISTING SIGNS TO BE REMOVED AND RETURNED TO ASHKUM YARD AFTER REMOVAL

EXISTING STOP SIGNS TO BE REMOVED

EXISTING SIGNS TO BE REMOVED AND RETURNED TO ASHKUM YARD AFTER REMOVAL

LEGEND



EXISTING STOP SIGNS TO BE REMOVED

RELOCATE EXIST. SIGNS

PROPOSED STOP SIGN

NOTES:

1. ALL SIGNS WILL BE PROVIDED BY THE CONTRACTOR AND APPROVED BY THE ENGINEER.
2. PORTABLE MESSAGE BOARDS WILL BE PLACED AT THE NORTH AND SOUTH LEG OF THE INTERSECTION FOR A PERIOD OF 1 WEEK BEFORE AND 2 WEEKS AFTER THE NEW 4 WAY STOP CONDITION IS INSTALLED.

REVISIONS	
NAME	DATE

ILLINOIS DEPARTMENT OF TRANSPORTATION

PROPOSED SIGNING PLAN

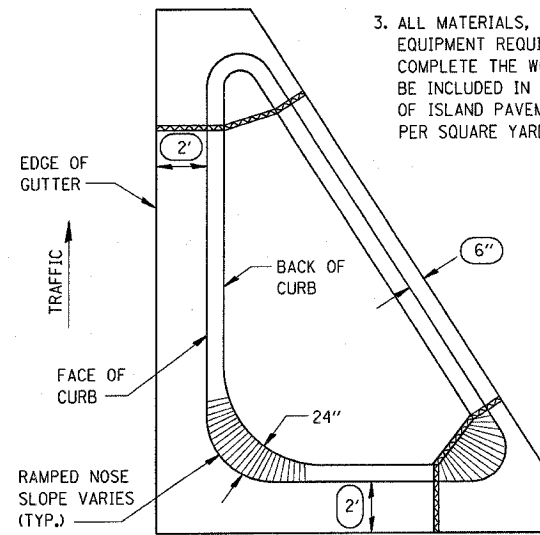
SCALE: VERT. _____
 HORIZ. _____
 DATE: JULY 27, 2004

DRAWN BY: KKP
 CHECKED BY: _____

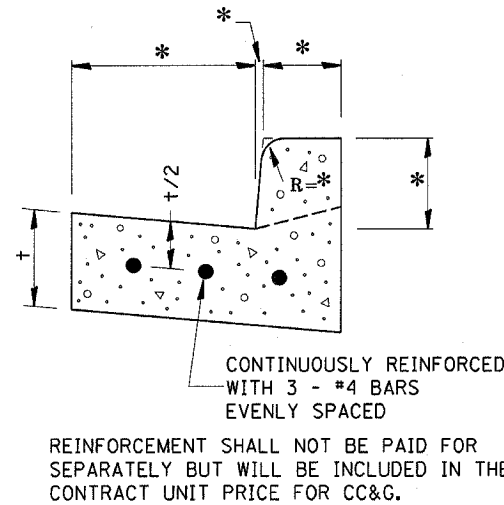
F.A.P. RTE.	SECTION	COUNTY	TOTAL SHEETS	SHEET NO.
681	118 N	ILLINOIS	30	17
STA.	TO STA.			
FED. ROAD DIST. NO.	ILLINOIS	FED. AID PROJECT		

GENERAL NOTES:

1. THE CURB AND GUTTER CONFIGURATION SHALL BE M-4.
2. SEE STD. 606001 & AND 606301 FOR ADDITIONAL DETAILS.
3. ALL MATERIALS, LABOR, AND EQUIPMENT REQUIRED TO COMPLETE THE WORK SHALL BE INCLUDED IN THE COST OF ISLAND PAVEMENT (SPECIAL) PER SQUARE YARD.

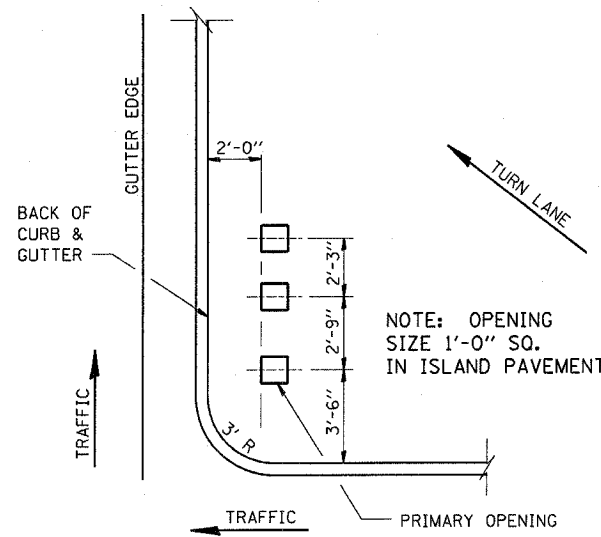
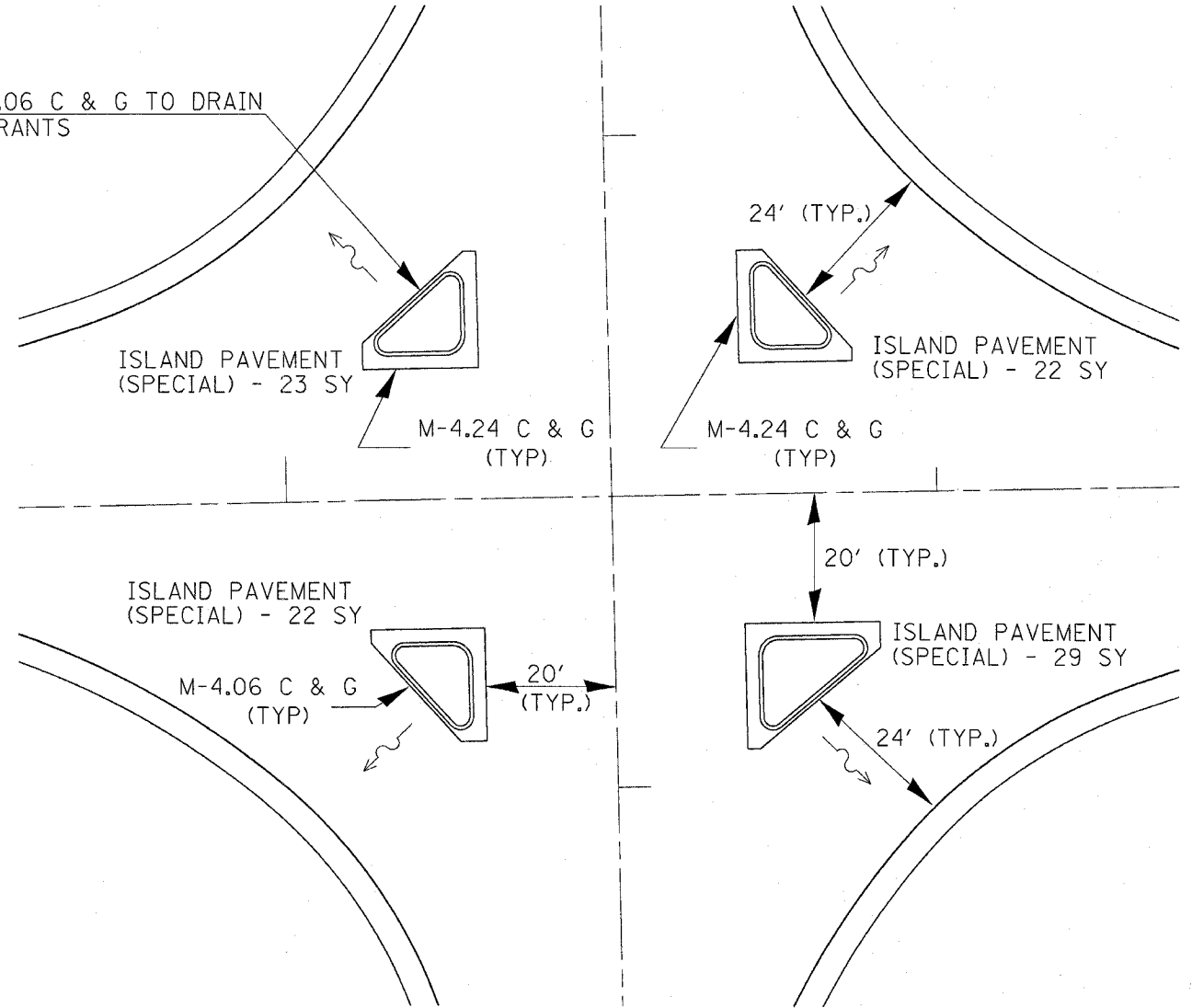


* VARIES - SEE STANDARD 606001



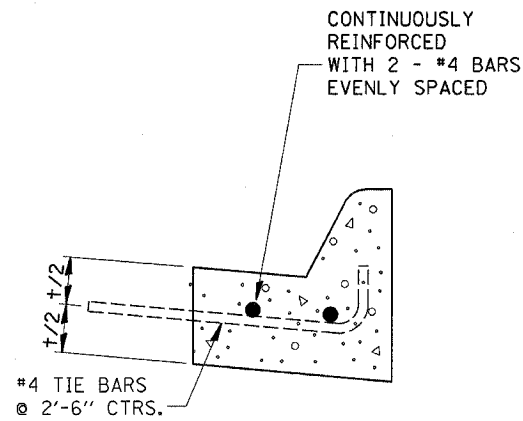
REINFORCEMENT DETAIL FOR COMBINATION CONCRETE CURB AND GUTTER

SLOPE M4.06 C & G TO DRAIN ALL QUADRANTS



ISLAND SIGN POST SPACING DETAIL

NOTE: THE ENGINEER SHALL DETERMINE THE NUMBER OF OPENINGS REQUIRED.



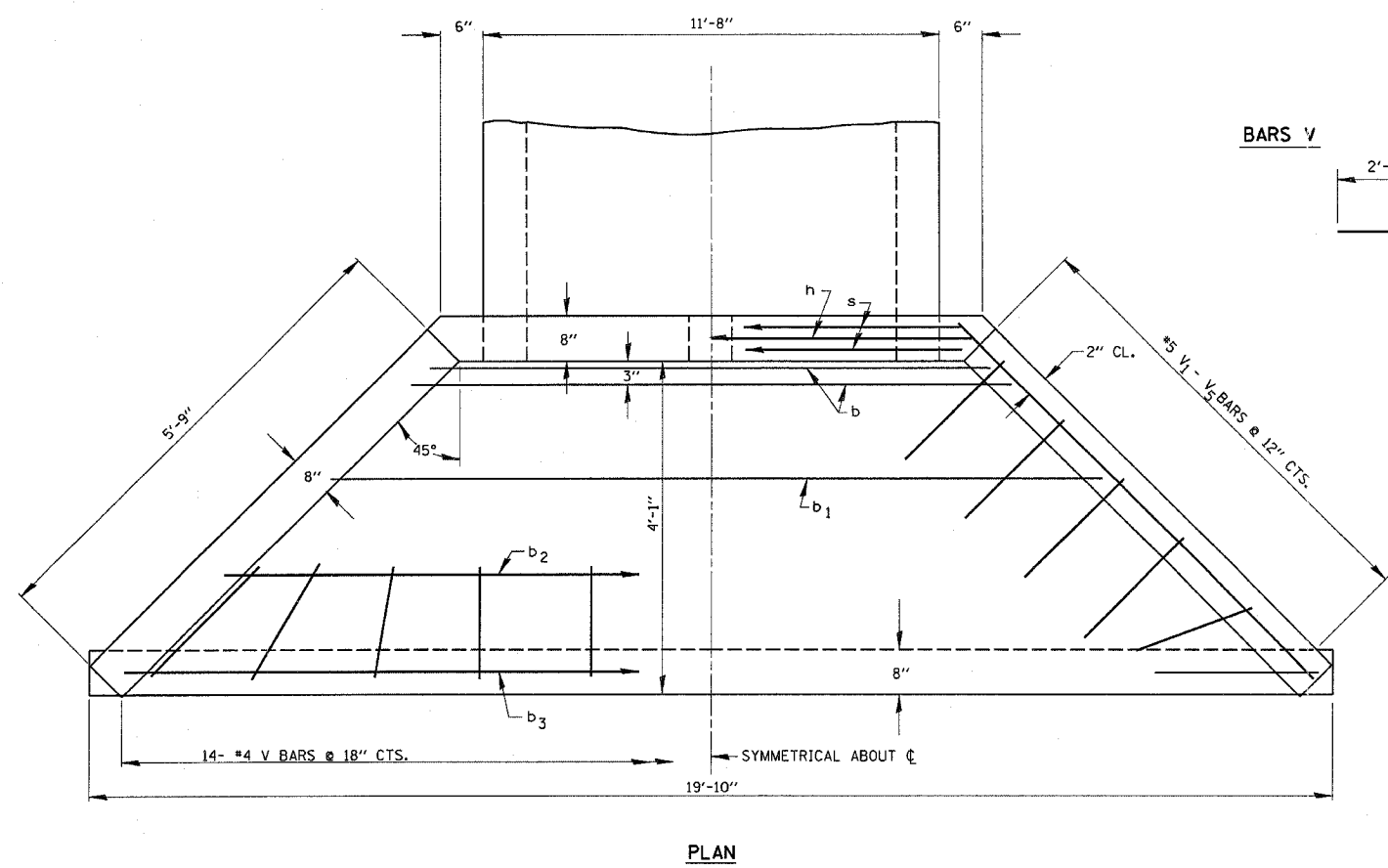
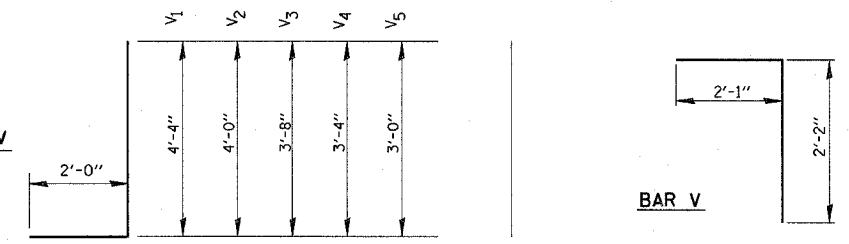
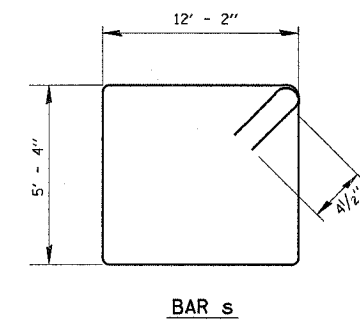
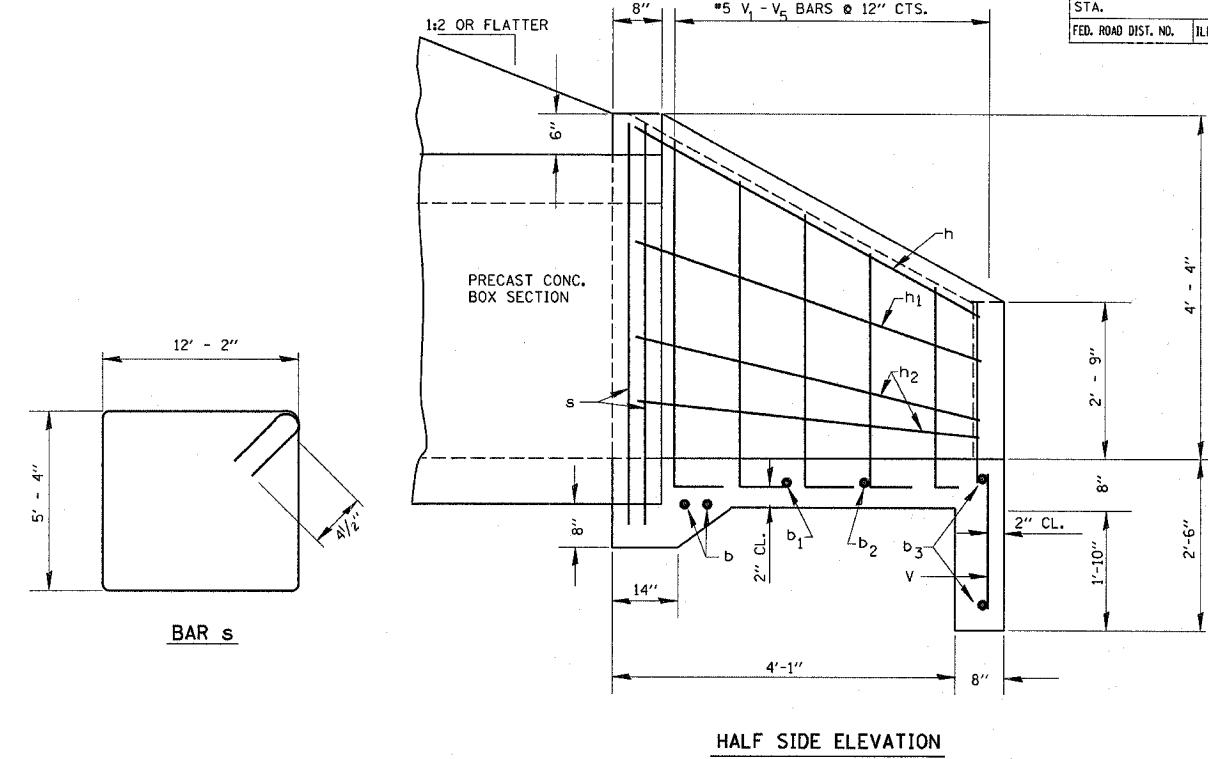
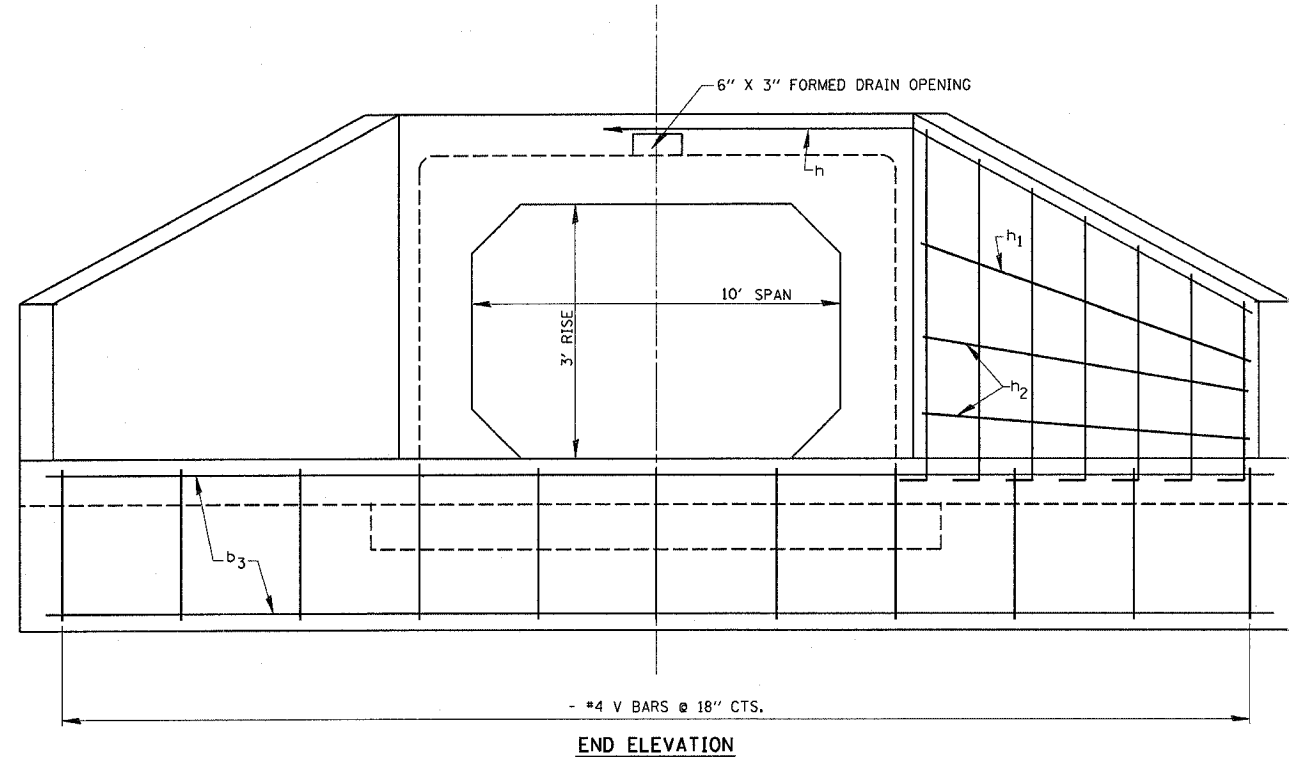
REINFORCEMENT SHALL NOT BE PAID FOR SEPARATELY BUT WILL BE INCLUDED IN THE CONTRACT UNIT PRICE FOR CC&G.

COMBINATION CONCRETE CURB AND GUTTER TYPE M-4.06

SEE SPECIAL PROVISIONS FOR ISLAND PAVEMENT (SPECIAL) FOR METHOD OF PAYMENT

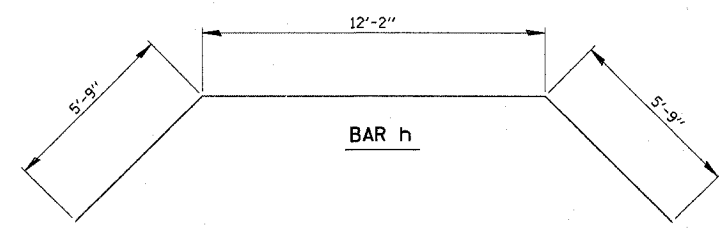
REVISIONS		ILLINOIS DEPARTMENT OF TRANSPORTATION
NAME	DATE	
		<p>ISLAND PAVEMENT DETAILS</p> <p>SCALE: VERT. HORIZ. DATE</p> <p>DRAWN BY CHECKED BY</p>

F.A.P. RTE.	SECTION	COUNTY	TOTAL SHEETS	SHEET NO.
681	118 N	IRROQUOIS	30	18
STA.	TO STA.			
FED. ROAD DIST. NO.	ILLINOIS FED. AID PROJECT			



BILL OF MATERIAL				
BAR	SIZE	NO.	LENGTH	SHAPE
b	5	2	11'-8"	—
b ₁	4	1	14'-3"	—
b ₂	4	1	16'-9"	—
b ₃	4	2	19'-4"	—
h	5	1	23'-8"	—
h ₁	4	2	5'-8"	—
h ₂	4	4	5'-7"	—
s	4	2	44'-0"	—
V	4	14	4'-3"	—
V ₁	5	2	6'-4"	—
V ₂	5	2	6'-0"	—
V ₃	5	2	5'-8"	—
V ₄	5	2	5'-4"	—
V ₅	5	2	5'-0"	—
CONCRETE HEADWALLS			C.Y.	4.6
REINFORCEMENT BARS			LBS.	276

TABLE FOR ONE (1) HEADWALL



GENERAL NOTES

CLASS SI CONCRETE SHALL BE USED THROUGHOUT.
 EXPOSED EDGES SHALL BE BEVELED 3/4".
 REINFORCEMENT BARS SHALL CONFORM TO THE
 REQUIREMENTS OF AASHTO M-31, M-42, OR M-53, GRADE 60.

DESIGNER NOTE:
 WHEN RISE 5', V₁ TO V₇
 SHALL BE EPOXY COATED

REVISIONS	
NAME	DATE

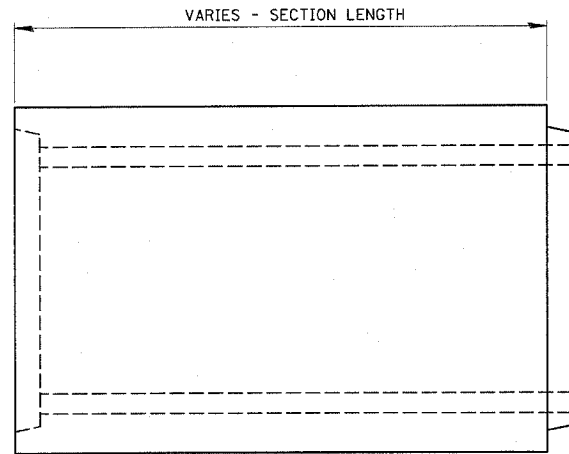
ILLINOIS DEPARTMENT OF TRANSPORTATION

CAST IN PLACE WINGWALL DETAIL

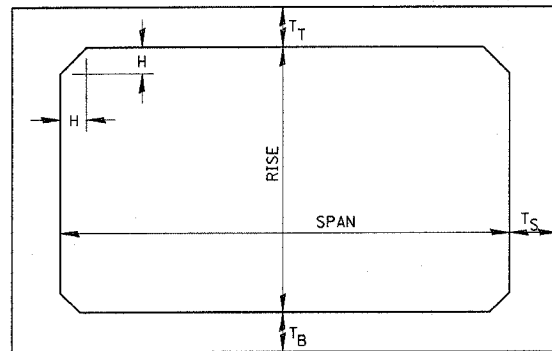
SCALE: VERT. _____
 HORIZ. _____

DRAWN BY _____
 CHECKED BY _____

F.A.P. RTE.	SECTION	COUNTY	TOTAL SHEETS	SHEET NO.
681	118 N	IROQUOIS	30	19
STA.		TO STA.		
FED. ROAD DIST. NO.		ILLINOIS FED. AID PROJECT		



ELEVATION



NOTE: THE HAUNCH DIMENSION H, IS EQUAL TO THE WALL THICKNESS T_S.

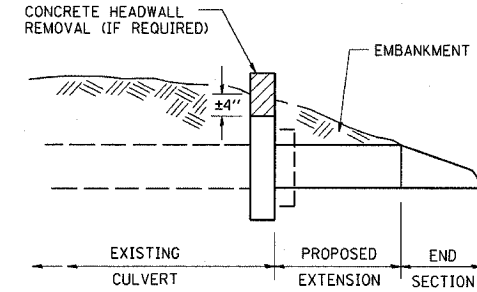
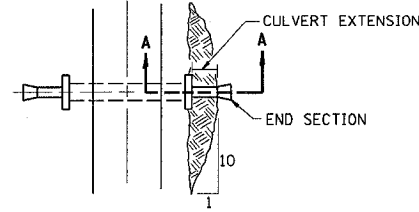
TYPICAL BOX SECTION

SPAN, FEET	T _T , INCHES		T _B , INCHES		T _S , INCHES	
	M 259	M 273	M 259	M 273	M 259	M 273
3	4	7	4	6	4	4
4	5	7 1/2	5	6	5	5
5	6	8	6	7	6	6
6	7	8	7	7	7	7
7	8	8	8	8	8	8
8	8	8	8	8	8	8
9	9	9	9	9	9	9
10	10	10	10	10	10	10
11	11	11	11	11	11	11
12	12	12	12	12	12	12

TYPICAL THICKNESSES

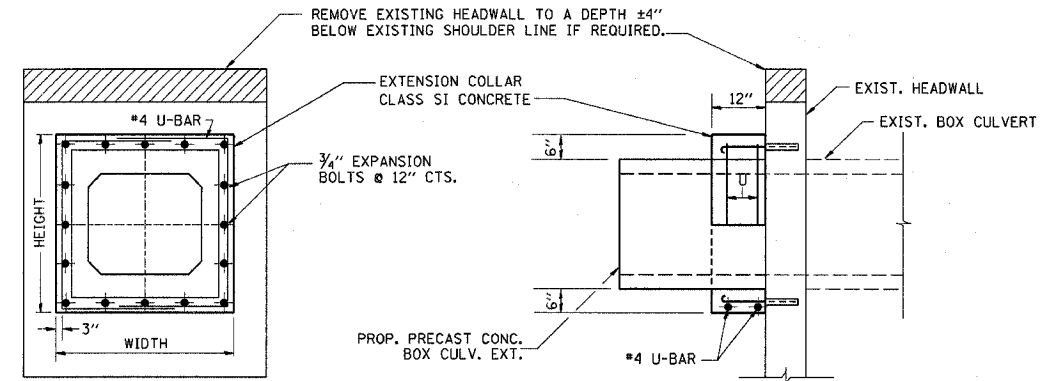
GENERAL NOTES:

MINIMUM COVER FOR BOX CULVERTS SHALL BE 6".

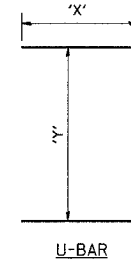


SECTION A-A

PLAN AT CULVERT EXTENSIONS



EXPANSION BOLTS SHALL CONSIST OF SELF DRILLING EXPANSION SHIELDS AND 3/4" DIA. HOOKED BOLTS. HOOKED BOLTS SHALL EXTEND A MINIMUM OF 9" INTO NEW CONCRETE. BOLTS SHALL BE DRILLED IN THE CENTER OF THE EXISTING BOX CULVERT BARREL WALLS. MINIMUM CERTIFIED PROOF LOAD = 4,080 LBS.



U-BAR

LOCATION	EXISTING CULVERT SIZE	PRECAST CULVERT EXTENSION	EXTENSION COLLAR		U-BAR		CONC. COLLAR	REINFORCEMENT BARS	3/4" DIA. EXPANSION BOLTS
			WIDTH	HEIGHT	'X'	'Y'			
STA	FT. x FT.	FT. x FT.	IN.	IN.	IN.	IN.	CU. YD.	POUND	EACH
822+00RT	10'x3'	39	152	68	77	63	.64	50	32
822+00LT	10'x3'	44	152	68	77	63	.64	50	32
TOTAL							1.28	100	64

QUANTITIES ARE FOR ONE SIDE ONLY

COLLAR DETAIL (PRECAST BOX CULVERT EXTENSION OF BOX CULVERT)

REVISIONS	
NAME	DATE

ILLINOIS DEPARTMENT OF TRANSPORTATION

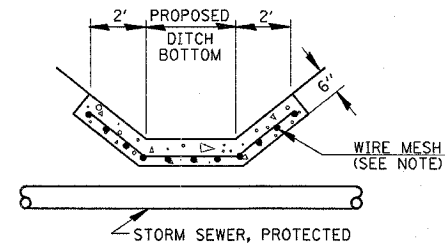
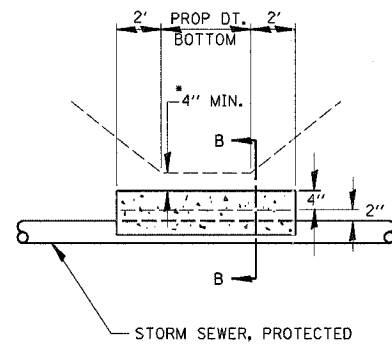
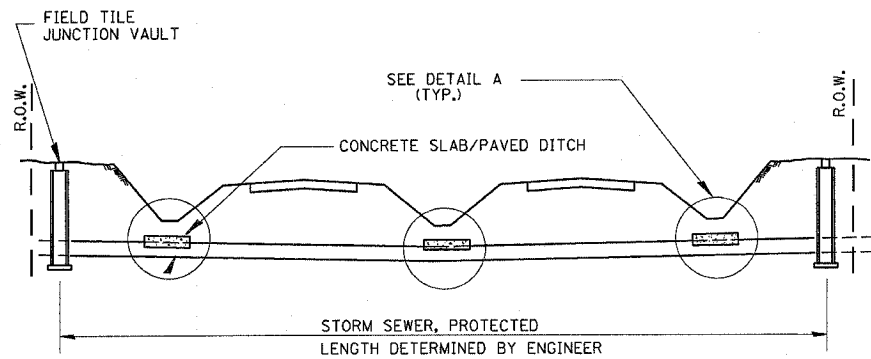
CONCRETE COLLAR DETAIL

SCALE: VERT. HORIZ. DATE

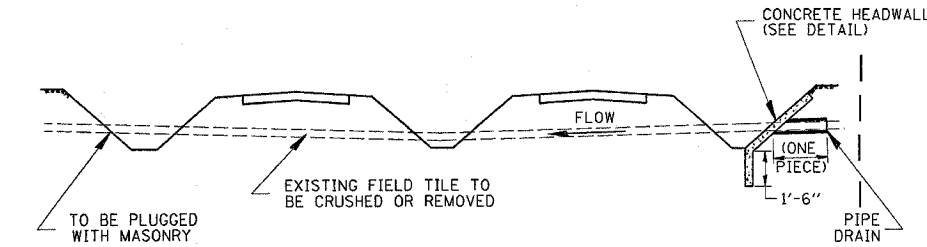
DRAWN BY CHECKED BY

F.A.P. RTE.	SECTION	COUNTY	TOTAL SHEETS	SHEET NO.
681	118 N	IROQUOIS	30	20
STA. TO STA.		ILLINOIS FED. AID PROJECT		

ALTERNATE MATERIALS FOR WALLS	T
PRECAST REINFORCED CONCRETE RISERS	4"
CONCRETE MASONRY UNIT	5"
MONOLITHIC CONCRETE	6"
BUILDING BRICK, GRADE SW FROM CLAY OR SHALE	8"
CONCRETE BUILDING BRICK, GRADE A	8"

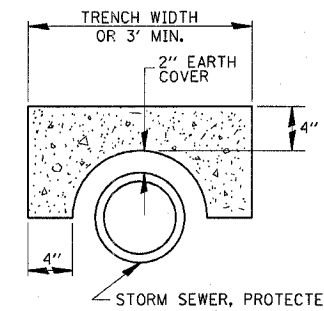


DETAIL C
NO SCALE



DETAIL A
NO SCALE

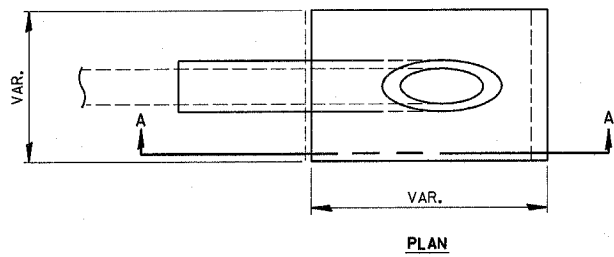
- IF A 4" COVER CAN NOT BE PROVIDED A PAVED DITCH SHALL BE CONSTRUCTED AS SHOWN IN DETAIL C.
- NOTES
1. WIDTH OF CONCRETE SLAB SHALL BE THE SAME AS THE TRENCH WIDTH IN ACCORDANCE WITH SECTION 550 OF THE STD. SPECIFICATIONS, OR 3' MIN.
 2. CONCRETE FOR SLAB, HEADWALL AND PAVED DITCH SHALL BE PAID FOR AT THE CONTRACT UNIT PRICE PER CUBIC YARD FOR MISCELLANEOUS CONCRETE.
 3. COST OF FURNISHING AND INSTALLING WIRE MESH SHALL BE INCLUDED IN THE CONTRACT UNIT PRICE PER CUBIC YARD FOR MISCELLANEOUS CONCRETE. WIRE MESH TO WEIGH NOT LESS THAN 58# PER 100 SQ. FT.



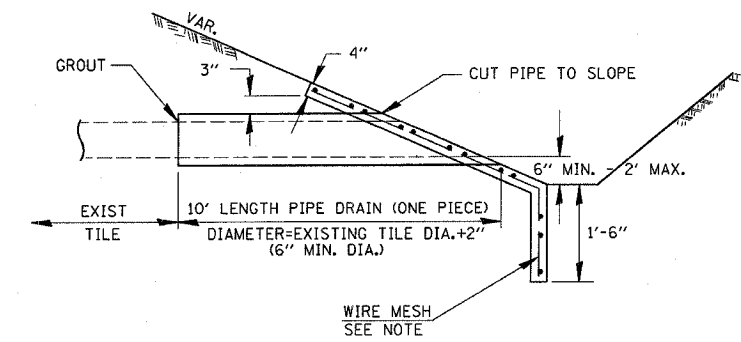
NOTES

1. THE CONTRACT UNIT PRICE FOR FIELD TILE JUNCTION VAULT SHALL INCLUDE THE COST OF FURNISHING AND PLACING THE FRAME AND GRATE OR PRECAST CONCRETE LID AND WHEN REQUIRED, THE SAND CUSHION.
2. ALL FIELD TILE JUNCTION VAULTS SHALL BE 2'-0" IN DIAMETER UNLESS OTHERWISE NOTED ON THE PLANS.

FIELD TILE REPLACEMENT

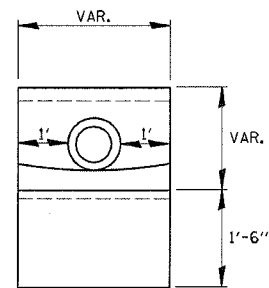


PLAN



SECTION A-A

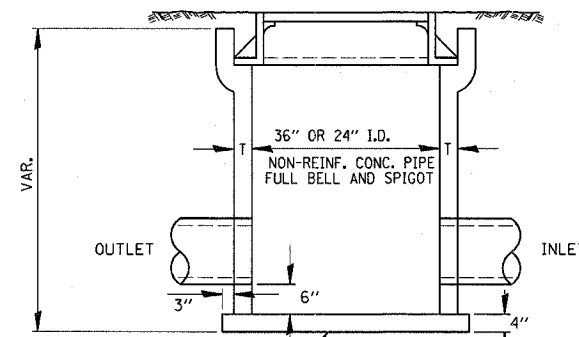
CLASS SI CONCRETE HEADWALLS



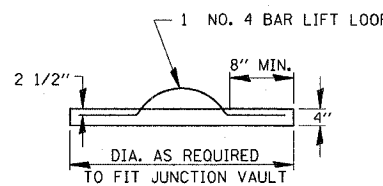
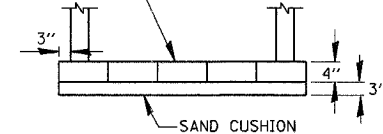
END VIEW

NOTES

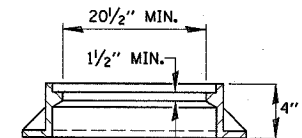
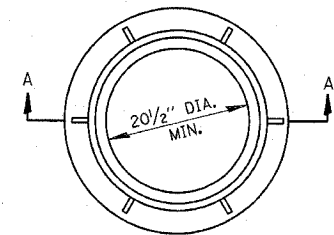
1. ANY STORM SEWER SPECIAL OR BACKSLOPE DRAIN OUTLET INTO A DITCH SHALL HAVE A HEADWALL BUILT IN ACCORDANCE WITH THIS DETAIL.
2. COST OF FURNISHING AND INSTALLING WIRE MESH SHALL BE INCLUDED IN THE CONTRACT UNIT PRICE PER CUBIC YARD FOR MISCELLANEOUS CONCRETE. WIRE MESH TO WEIGH NOT LESS THAN 58# PER 100 SQ. FT.



CLASS SI CONCRETE OR PRECAST REINFORCED CONCRETE SLABS NOT LESS THAN 12" WIDE



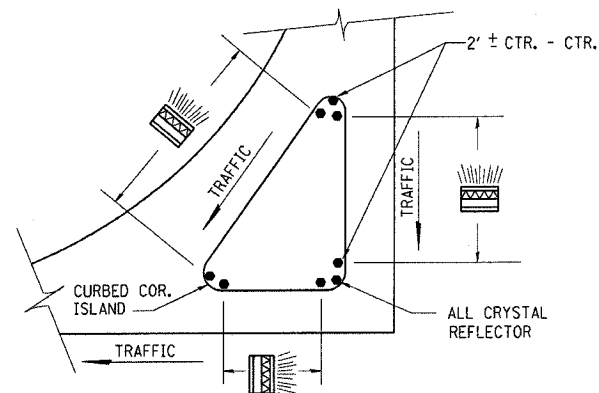
FIELD TILE JUNCTION VAULT



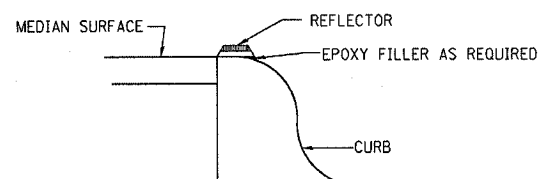
SECTION A-A

REVISIONS		ILLINOIS DEPARTMENT OF TRANSPORTATION
NAME	DATE	
		<p>FIELD TILE DETAILS</p> <p>SCALE: VERT. HORIZ. DATE</p> <p>DRAWN BY CHECKED BY</p>

F.A.P. RTE.	SECTION	COUNTY	TOTAL SHEETS	SHEET NO.
681	118 N	IROQUOIS	30	21
STA.	TO STA.			
FED. ROAD DIST. NO.	ILLINOIS	FED. AID PROJECT		



PRISMATIC REFLECTORS

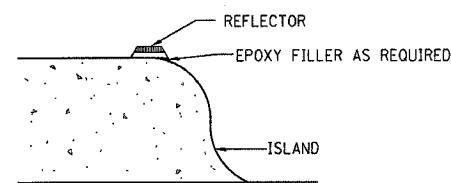


SECTION VIEW

NOTES

1. PRISMATIC REFLECTORS SHALL BE MONO-DIRECTIONAL AND POSITIONED SO THAT THE REFLECTIVE FACE IS FACING THE APPROACHING TRAFFIC.
2. PRISMATIC REFLECTORS SHALL BE SECURED IN PLACE WITH AN EPOXY ADHESIVE.
3. PRISMATIC REFLECTORS SHALL BE EITHER AMBER OR CRYSTAL IN COLOR.

OPTION 1

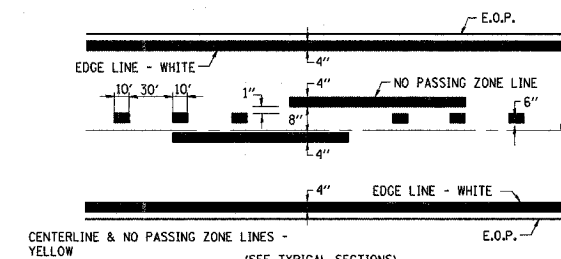


SECTION VIEW

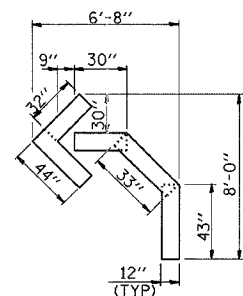
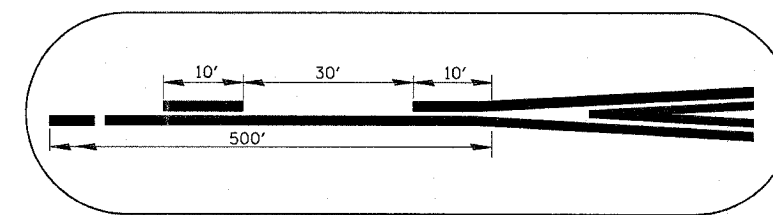
NOTES

1. PRISMATIC REFLECTORS SHALL BE MONO-DIRECTIONAL AND POSITIONED SO THAT THE REFLECTIVE FACE IS FACING THE APPROACHING TRAFFIC.
2. PRISMATIC REFLECTORS SHALL BE SECURED IN PLACE WITH AN EPOXY ADHESIVE.
3. PRISMATIC REFLECTORS SHALL BE EITHER AMBER OR CRYSTAL IN COLOR.

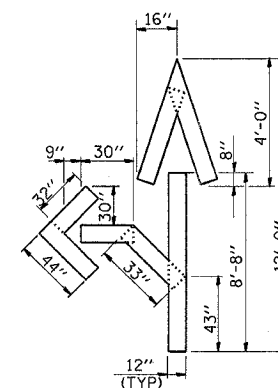
OPTION 2



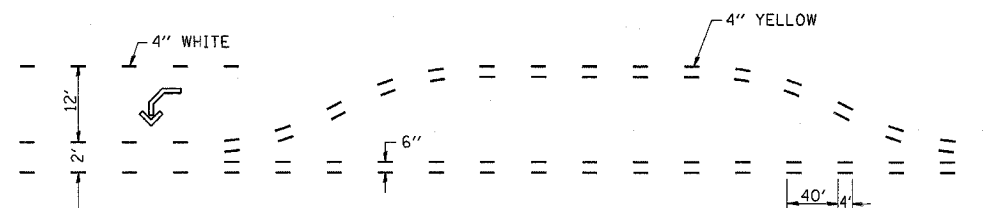
PAVEMENT MARKING



QUANTITY
12" LINE = 16 LIN. FT.
OR 4" LINE = 48 LIN. FT.



QUANTITY
12" LINE = 29 LIN. FT.
OR 4" LINE = 87 LIN. FT.



SHORT-TERM PAVEMENT MARKING FOR MEDIANS AND ARROWS

REVISIONS	
NAME	DATE

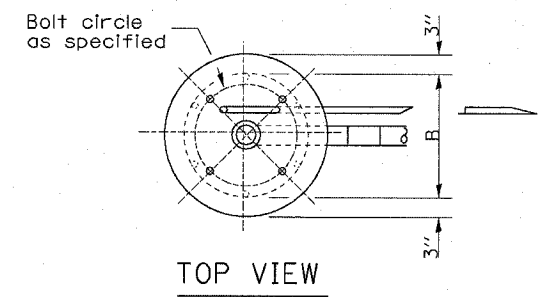
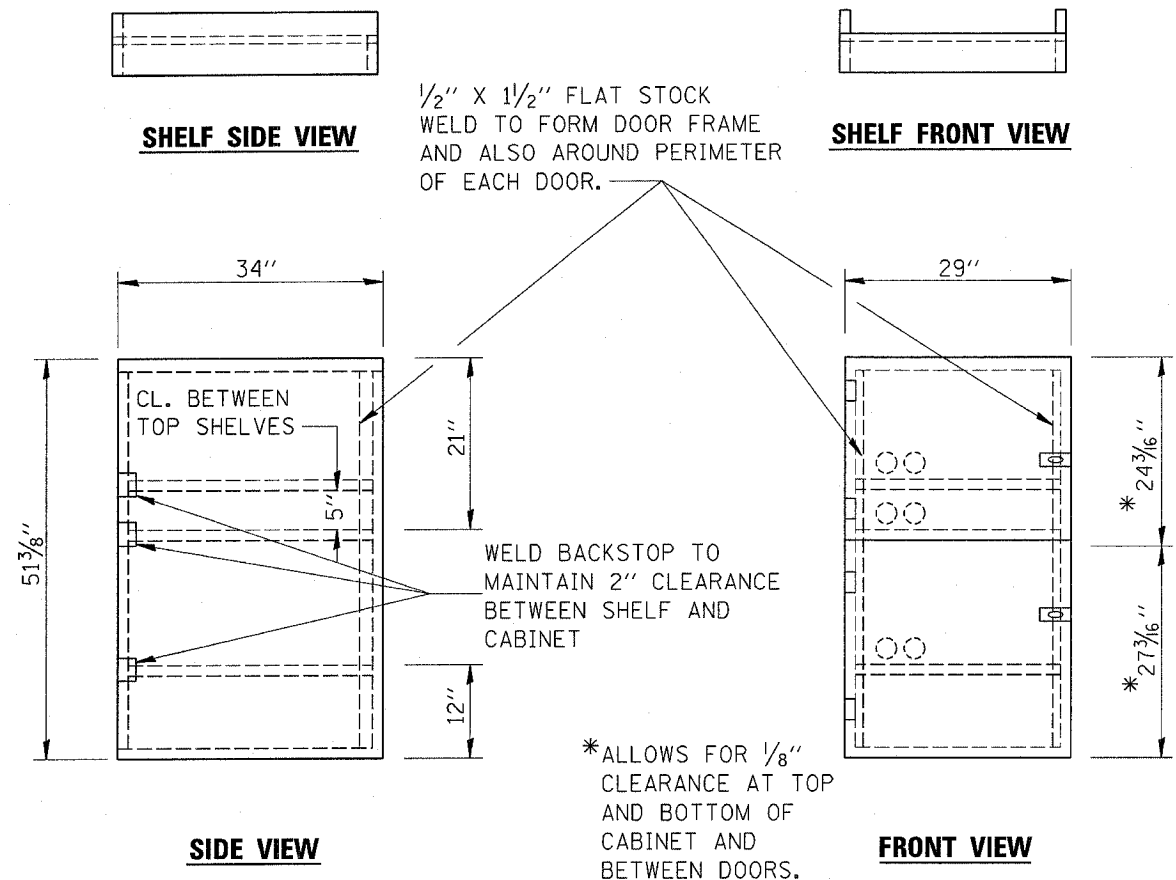
ILLINOIS DEPARTMENT OF TRANSPORTATION

DETAILS

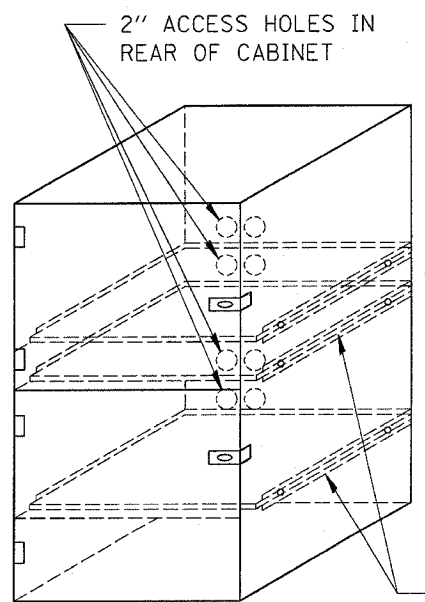
SCALE: VERT.
HORIZ.
DATE

DRAWN BY
CHECKED BY

F.A.P. RTE.	SECTION	COUNTY	TOTAL SHEETS	SHEET NO.
681	118 N	IROQUOIS	30	22
STA.		TO STA.		
FED. ROAD DIST. NO.		ILLINOIS FED. AID PROJECT		



- NOTES:
1. USE 16 GAUGE STEEL FOR CABINET.
 2. THE TOP SHELF SHALL SLIDE IN OR OUT WITH THE TOP DOOR OPEN.
 3. ALL HINGES AND HASPS WILL BE WELDED TO THE CABINET.
 4. ALL EDGES SHALL BE GROUND SMOOTH.
 5. TWO (2" DIA.) ACCESS HOLES WILL BE REQUIRED FOR EACH SHELF.
 6. CABINET SHALL BE PAINTED WITH TWO COATS OF FLAT PAINT.
 7. 2 EACH MATCHING KEY PADLOCKS, WITH 3 KEYS PROVIDED, MASTER MODEL 3 T OR EQUIVALENT.
 8. 4 EACH PLAIN STEEL, NON-REMOVABLE PIN, NO HOLE 4"X4" SQUARE CORNER HINGES TO BE WELDED ON.
 9. 2 EACH EXTRA HEAVY, PLAIN STEEL, FIXED STAPLE, NO HOLE, 7 1/4 " HASPS TO BE WELDED ON.



Mast arm length	A	B	Number of (No. 5) rebars	Foundation depth
Less than 30'	30"	24"	8	(9'-0")*
Greater than or equal to 30' and less than 40'	30"	24"	8	(12'-0")*
Greater than or equal to 40' and less than 50'	30"	24"	8	(15'-0")*
Greater than or equal to 50' and less than 55'	30"	24"	8	(17'-0")*

DESIGNER NOTE: TO BE USED ON ALL PROJECTS WITH A PROPOSED MAST ARM FOUNDATION

TYPE E

838-1

CONCRETE FOUNDATION FOR MAST ARM

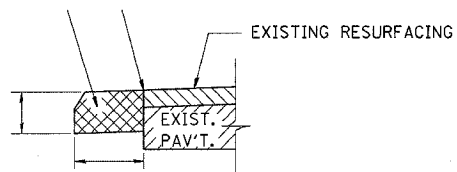
LOCKABLE COMPUTER CABINET

REVISIONS		ILLINOIS DEPARTMENT OF TRANSPORTATION
NAME	DATE	
		DETAILS

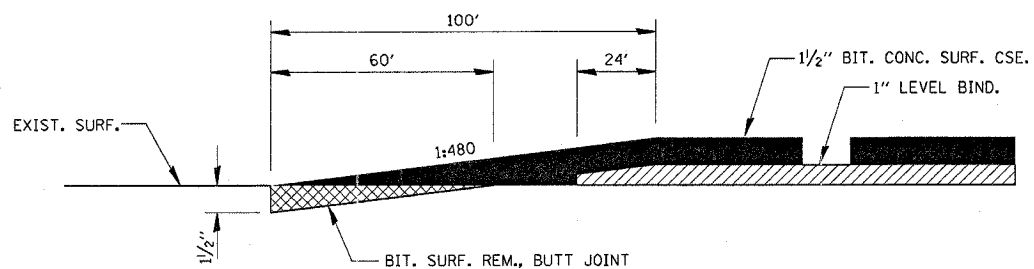
SCALE: VERT. DATE
HORIZ. DRAWN BY
CHECKED BY

2/14/2005
C:\lavo\jrcr\sh\ep02704\lavo\l1.s.dgn

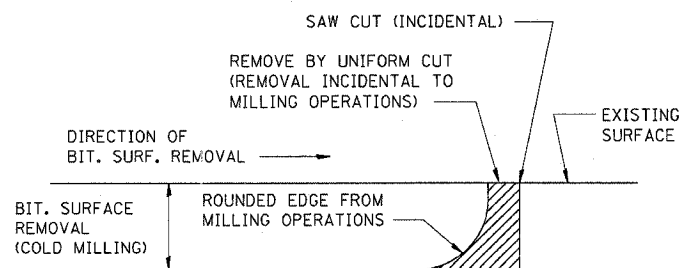
F.A.P. RTE.	SECTION	COUNTY	TOTAL SHEETS	SHEET NO.
681	118 N	IROQUOIS	30	23
STA.	TO STA.			
FED. ROAD DIST. NO.	ILLINOIS FED. AID PROJECT			



REMOVAL OF EXISTING BITUMINOUS SHOULDER



BUTT JOINT DETAIL



NOTE: WHEN MILLING OPERATIONS PRODUCE A ROUNDED EDGE, THEN A SAW CUT SHALL BE USED TO MANUFACTURE A PERPENDICULAR EDGE AS SHOWN IN THE DETAIL. THE ENGINEER SHALL BE THE SOLE JUDGE CONCERNING THE USE OF THIS DETAIL

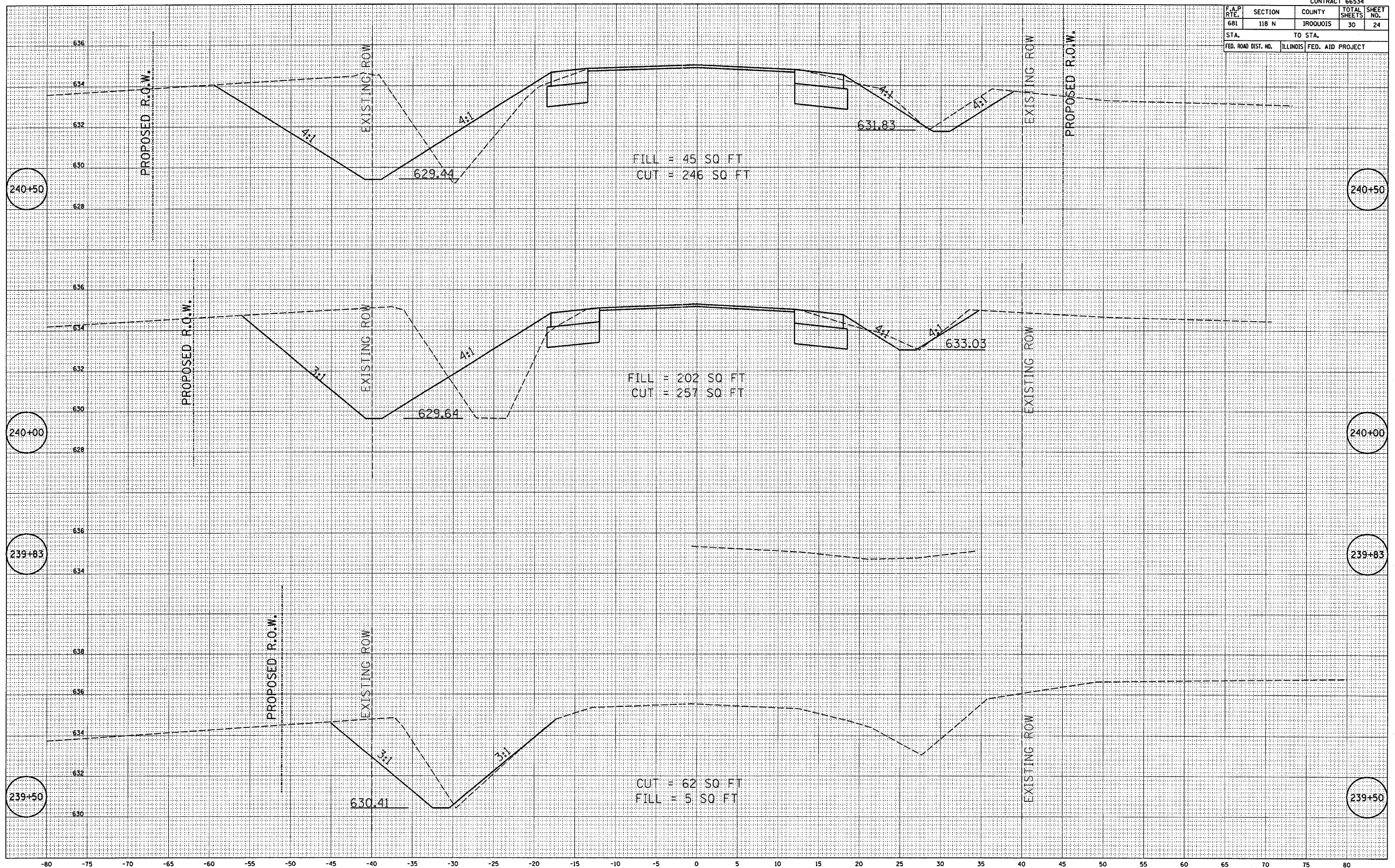
BITUMINOUS DETAIL AT BUTT JOINTS

REVISIONS		ILLINOIS DEPARTMENT OF TRANSPORTATION
NAME	DATE	
		<p style="text-align: center;">DETAILS</p> <p>SCALE: VERT. DATE DRAWN BY CHECKED BY</p>

F.A.P. RTE.	SECTION	COUNTY	TOTAL SHEETS	SHEET NO.
681	118 N	ILLINOIS	30	24
STA. TO STA.		FED. ROAD DIST. NO. ILLINOIS FED. AID PROJECT		

FINAL	DATE
CONVERTED	BY
PLOTTED	
TEMPLATE	
AREAS	
DELETED	
NO.	

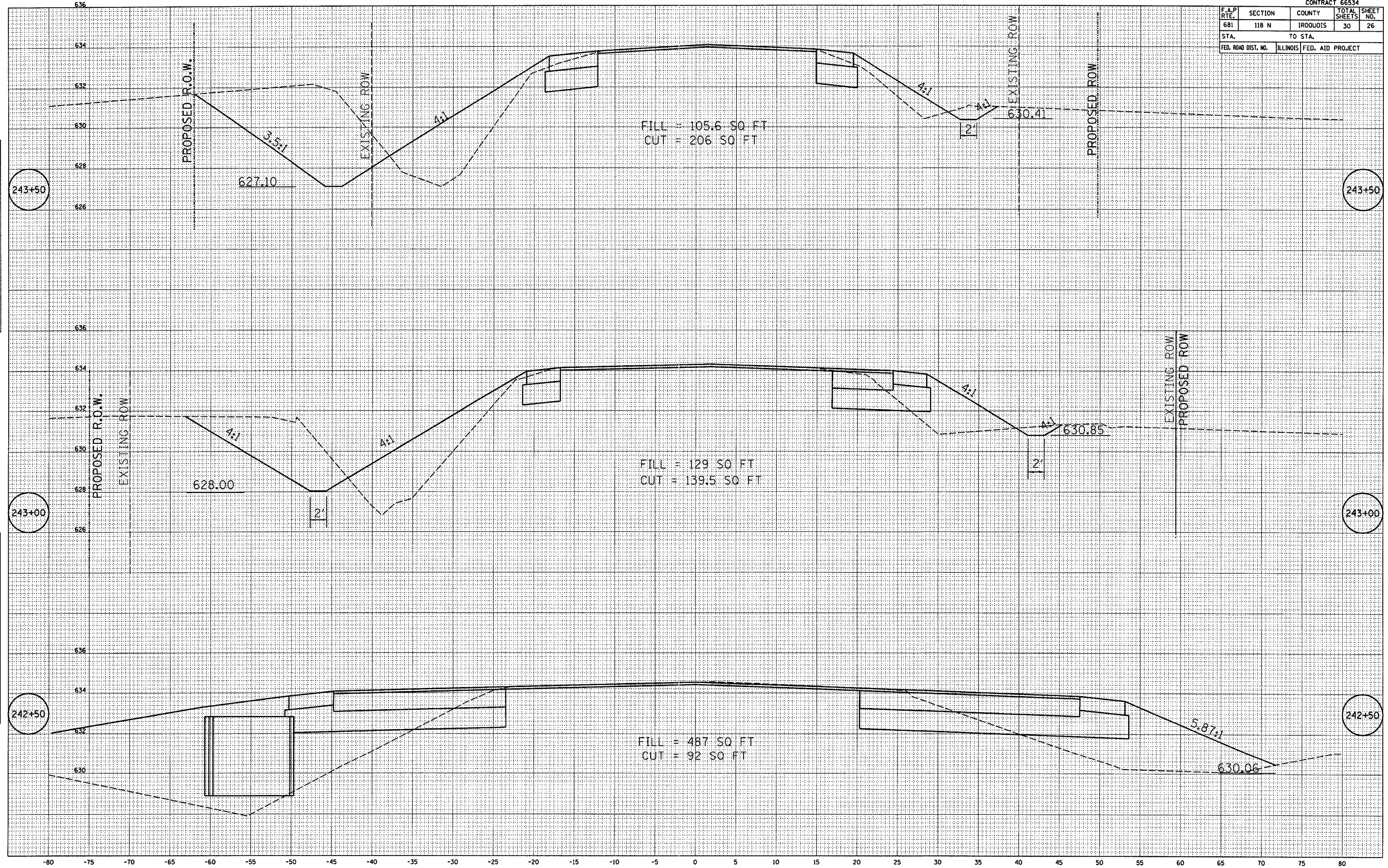
ORIGINAL	DATE
SURVEY	BY
NOT	
DELETED	
AREAS	
DELETED	
NO.	



F.A.P. RTE.	SECTION	COUNTY	TOTAL SHEETS	SHEET NO.
681	118 N	IROQUOIS	30	26
STA. 242+50		TO STA. 243+50		
FED. ROAD DIST. NO.		ILLINOIS FED. AID PROJECT		

DATE	
BY	
FINAL SURVEY	
NO. OF SHEETS	
NO. OF SHEETS CHECKED	
NO. OF SHEETS NOT CHECKED	

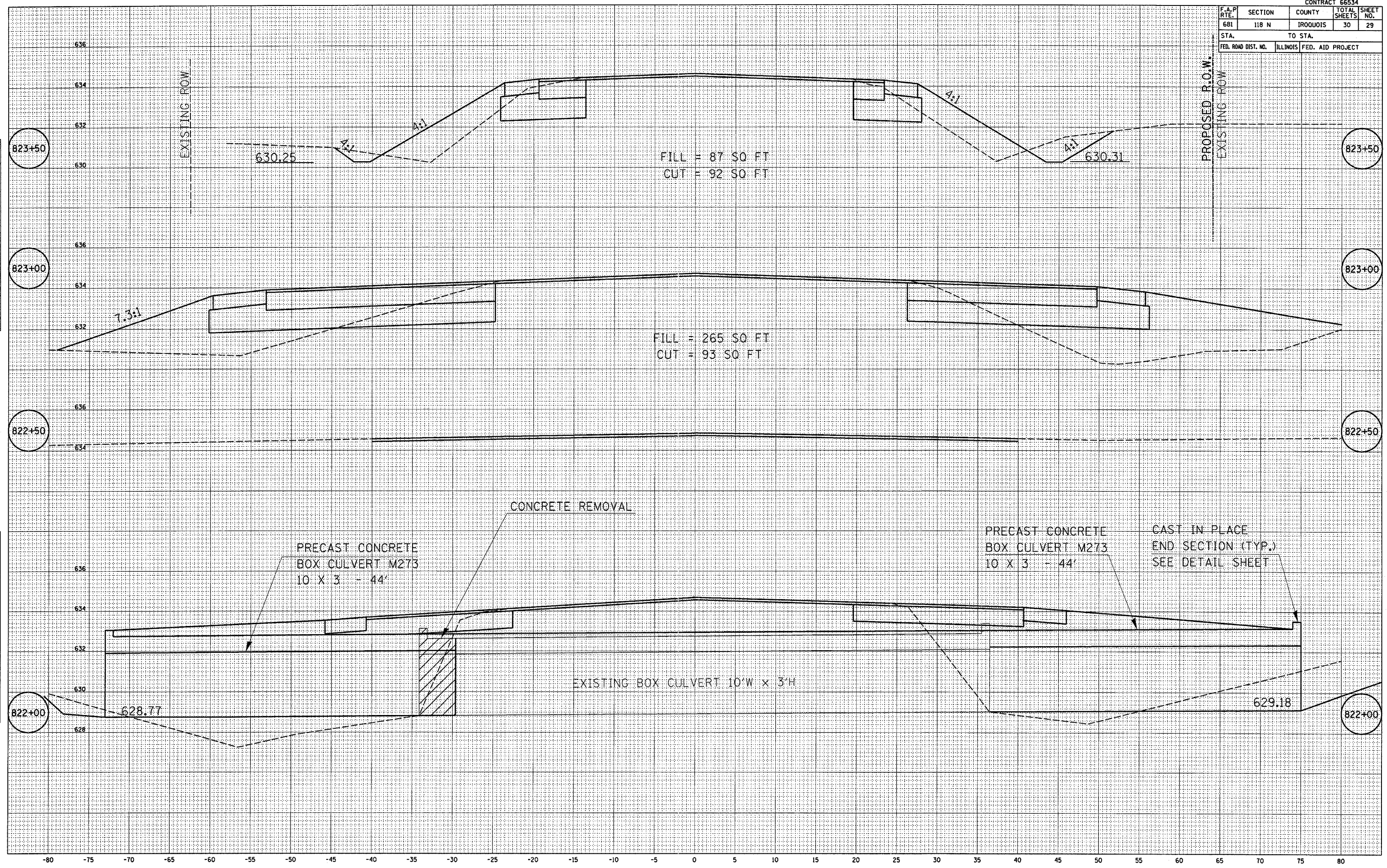
DATE	
BY	
ORIGINAL SURVEY	
NO. OF SHEETS	
NO. OF SHEETS CHECKED	
NO. OF SHEETS NOT CHECKED	



F.A.P. R.T.E.	SECTION	COUNTY	TOTAL SHEETS	SHEET NO.
681	118 N	IRROQUOIS	30	29
STA. 822+00		TO STA. 823+50		
FED. ROAD DIST. NO.		ILLINOIS FED. AID PROJECT		

DATE	
BY	
FINAL SURVEY	
NOTED	
NO.	

DATE	
BY	
ORIGINAL SURVEY	
NOTED	
NO.	



FILL = 87 SQ FT
CUT = 92 SQ FT

FILL = 265 SQ FT
CUT = 93 SQ FT

PRECAST CONCRETE
BOX CULVERT M273
10 X 3 - 44'

CONCRETE REMOVAL

EXISTING BOX CULVERT 10'W x 3'H

PRECAST CONCRETE
BOX CULVERT M273
10 X 3 - 44'

CAST IN PLACE
END SECTION (TYP.)
SEE DETAIL SHEET

