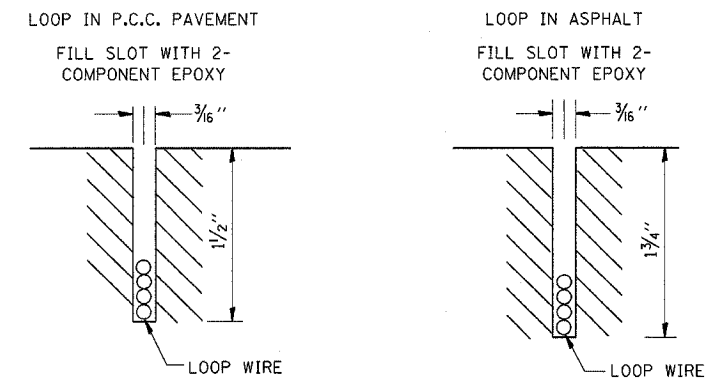
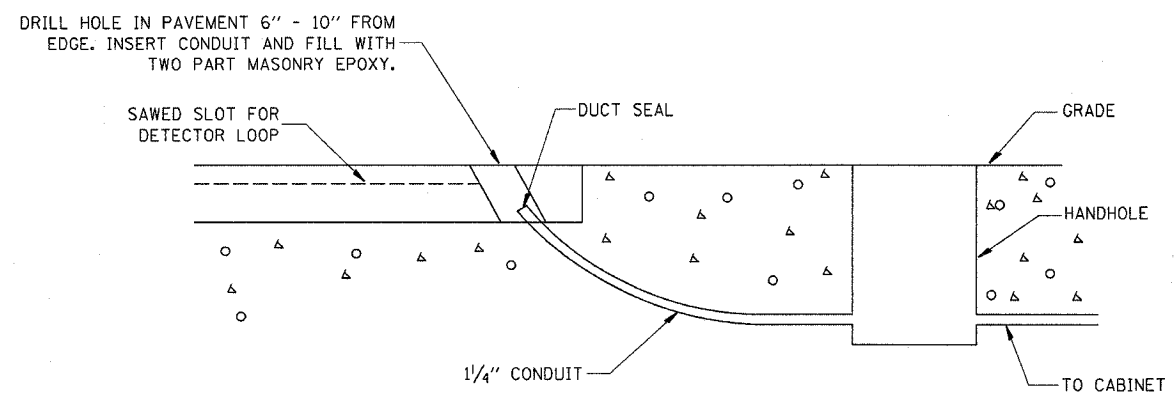


F.A.P. RTE.	SECTION	COUNTY	TOTAL SHEETS	SHEET NO.
332	(62)RS-2	KANKAKEE	12	9
STA.		TO STA.		
FED. ROAD DIST. NO.		ILLINOIS FED. AID PROJECT		

DETECTOR LOOP INSTALLATION



DETECTOR LOOP LEAD-IN DETAIL



TRAFFIC SIGNAL GENERAL NOTES

- 1 NO ADDITIONAL COMPENSATION WILL BE ALLOWED FOR PLACING CONDUIT AT GREATER THAN 2 FEET MINIMUM DEPTH TO AVOID OBSTACLES SUCH AS UNDERGROUND UTILITIES.
- 2 AT ALL LOCATIONS WHERE DETECTOR LOOPS ARE TO BE INSTALLED OVER EXISTING DETECTOR LOOPS, THE CONTRACTOR SHALL BE REQUIRED TO MAKE TWO SEPARATE SAW CUTS THROUGH EACH EXISTING DETECTOR LOOP TO PREVENT THE POSSIBILITY OF THE EXISTING LOOP SHORTING TO CREATE A CLOSED CIRCUIT. THIS WORK SHALL BE INCIDENTAL TO THE DETECTOR LOOP PAY ITEM.
- 3 ALL DETECTOR LOOP HARNESSES SHALL BE FURNISHED WITH PLASTIC TAGS LABELED WITH RESPECTIVE PHASES AND DIRECTION AS LISTED IN THE DETECTOR LOOP CHART. A MINIMUM TAG SIZE OF 1CM BY 2CM. ALL DETECTOR AMPLIFIERS SHALL BE LABELED THE SAME AS THE HARNESSES WITH A REMOVABLE TAG. TAGS SHALL BE MADE OF A MATERIAL THAT DOES NOT ALLOW WRITING TO FADE OVER TIME.
- 4 THE CONTRACTOR IS RESPONSIBLE FOR THE COST OF UNCOVERING OR HAND DIGGING AROUND UTILITIES AS NECESSARY, INCIDENTAL TO THE CONDUIT PAY ITEM.
- 5 THE LENGTH OF THE DETECTOR LOOP CABLE FROM THE CURB TO THE JUNCTION BOX OR HANDHOLD IS INCIDENTAL TO THE DETECTOR LOOP PAY ITEM.
- 6 INSTALLATION OF ALL DETECTOR LOOPS SHALL BE PERFORMED AFTER THE BITUMINOUS SURFACE REMOVAL AND BEFORE THE BITUMINOUS SURFACE IS BEGUN.
- 7 EACH DETECTOR LOOP SHALL HAVE FOUR TURNS.
- 8 THE TESTING OF LOOPS SHALL BE COMPLETED AFTER THE BITUMINOUS SURFACE REMOVAL AND BEFORE THE BITUMINOUS SURFACE IS COMPLETE.
- 9 THE DEPTH OF THE DETECTOR LOOPS SHALL MAINTAIN A CONSISTENT DEPTH IN AREAS BETWEEN MILLED SURFACE AND SHOULDER AREA.
- 10 ANY SPLICES IN DETECTOR LOOPS SHALL BE INCIDENTAL TO DETECTOR LOOP PAY ITEM.

REVISIONS	
NAME	DATE

ILLINOIS DEPARTMENT OF TRANSPORTATION

DETAILS

SCALE: VERT. _____
 HORIZ. _____

DATE _____ DRAWN BY _____
 CHECKED BY _____