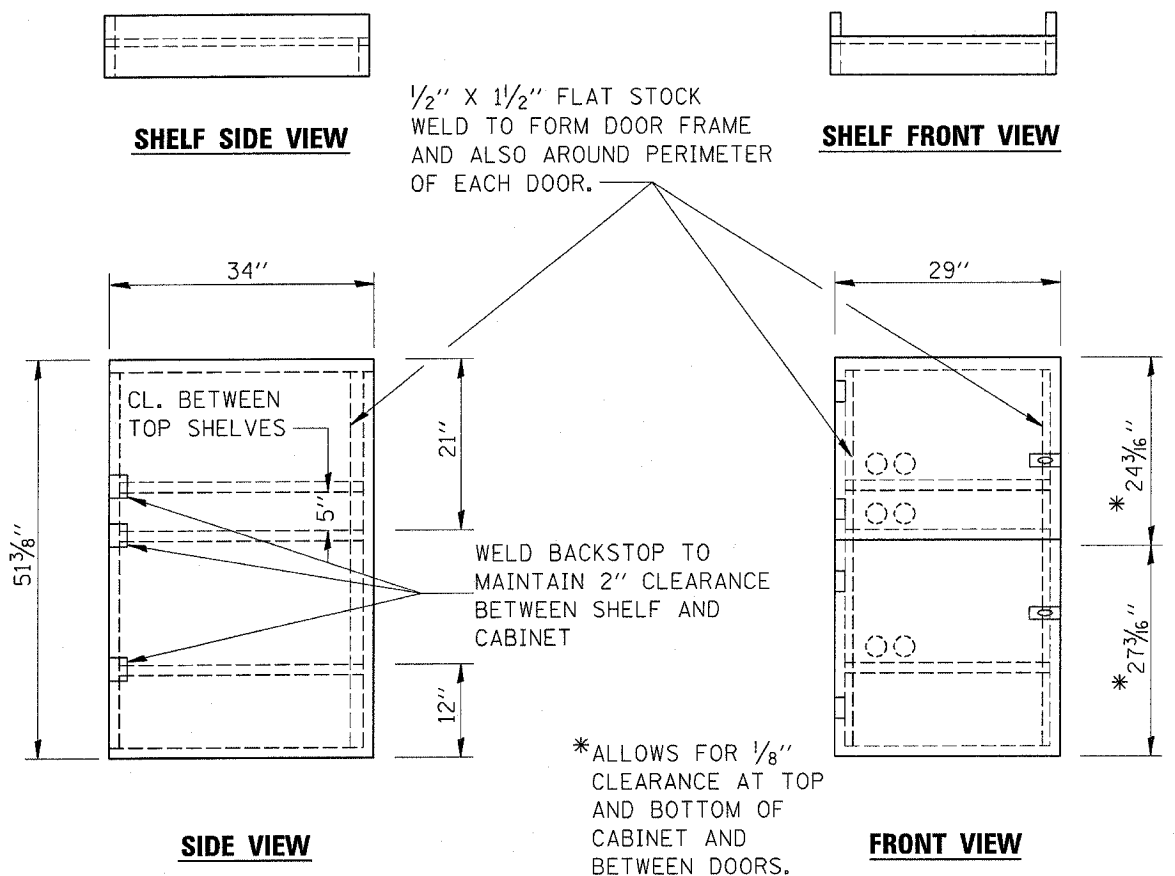
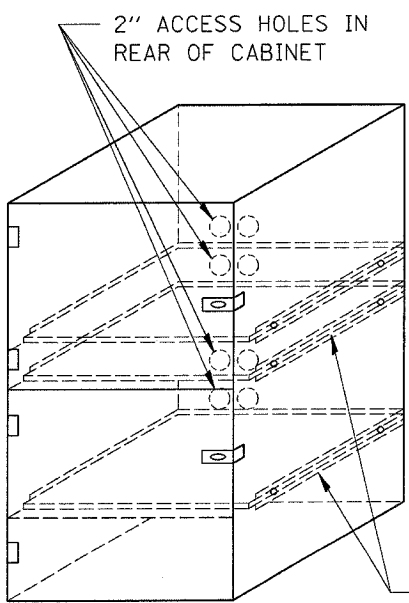


F.A.P. RTE.	SECTION	COUNTY	TOTAL SHEETS	SHEET NO.
332	62JRS-2	KANKAKEE	12	12
STA.		TO STA.		
FED. ROAD DIST. NO.		ILLINOIS FED. AID PROJECT		

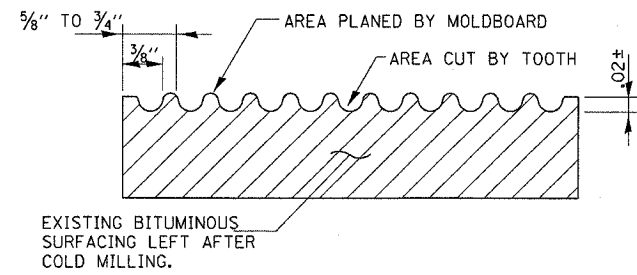
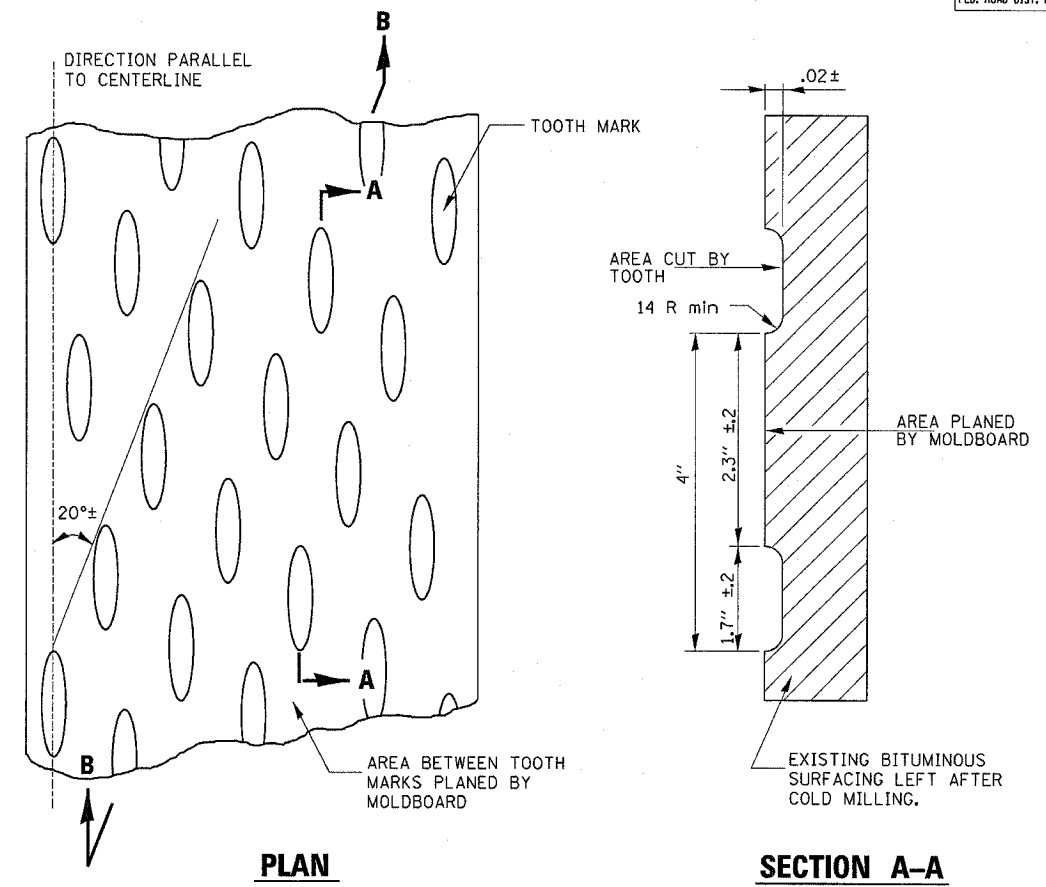


- NOTES:
1. USE 16 GAUGE STEEL FOR CABINET.
 2. THE TOP SHELF SHALL SLIDE IN OR OUT WITH THE TOP DOOR OPEN.
 3. ALL HINGES AND HASPS WILL BE WELDED TO THE CABINET.
 4. ALL EDGES SHALL BE GROUND SMOOTH.
 5. TWO (2" DIA.) ACCESS HOLES WILL BE REQUIRED FOR EACH SHELF.
 6. CABINET SHALL BE PAINTED WITH TWO COATS OF FLAT PAINT.
 7. 2 EACH MATCHING KEY PADLOCKS, WITH 3 KEYS PROVIDED, MASTER MODEL 3 T OR EQUIVALENT.
 8. 4 EACH PLAIN STEEL, NON-REMOVABLE PIN, NO HOLE 4"x4" SQUARE CORNER HINGES TO BE WELDED ON.
 9. 2 EACH EXTRA HEAVY, PLAIN STEEL, FIXED STAPLE, NO HOLE, 7 1/4 " HASPS TO BE WELDED ON.



FLAT STOCK DIMENSIONS VARY DEPENDING ON TYPE OF ROLLER ASSEMBLY.

LOCKABLE COMPUTER CABINET



1. COLD MILLING SHALL CONSIST OF TWO PROCESSES: CUTTING WITH CARBIDE TEETH MOUNTED ON A ROTATING DRUM, AND PLANING WITH A MOLDBOARD MOUNTED IMMEDIATELY BEHIND THE CUTTING DRUM.
2. OTHER SIMILAR PATTERNS WILL BE ACCEPTABLE IF THEY CONSIST OF A SMOOTH, FLAT PLANED SURFACE INTERSPERSED WITH A PATTERN OF DISCONTINUOUS LONGITUDINAL STRIATIONS.

REQUIRED COLD MILLED SURFACE TEXTURE

REVISIONS		ILLINOIS DEPARTMENT OF TRANSPORTATION
NAME	DATE	
		<p>DETAILS</p> <p>SCALE: VERT. HORIZ.</p> <p>DATE</p> <p>DRAWN BY</p> <p>CHECKED BY</p>