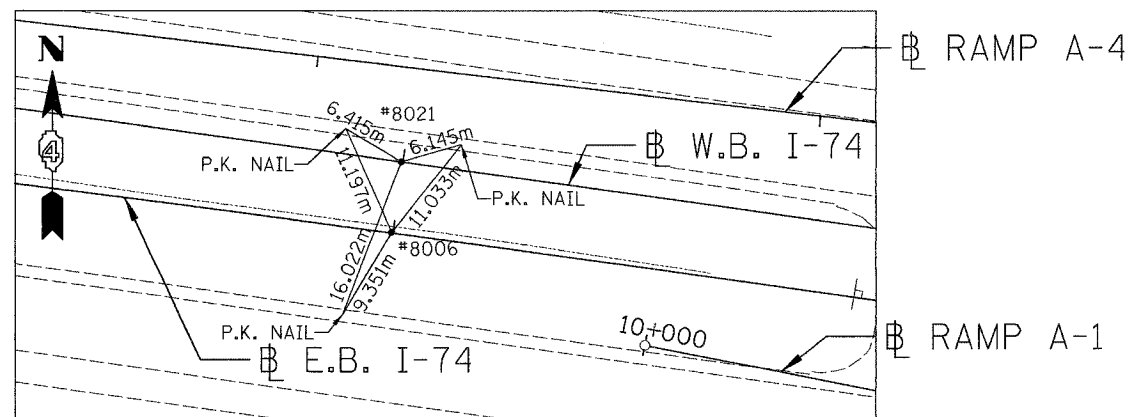
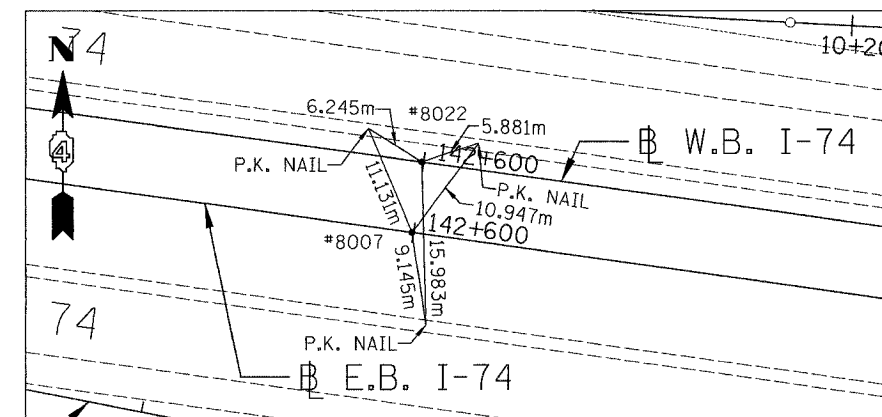


F.A. RTE.	SECTION	COUNTY	TOTAL SHEETS	SHEET NO.
74	(72-7)R-3	PEORIA	1360	107
STA.		TO STA.		
FED. ROAD DIST. NO.		ILLINOIS FED. AID PROJECT		



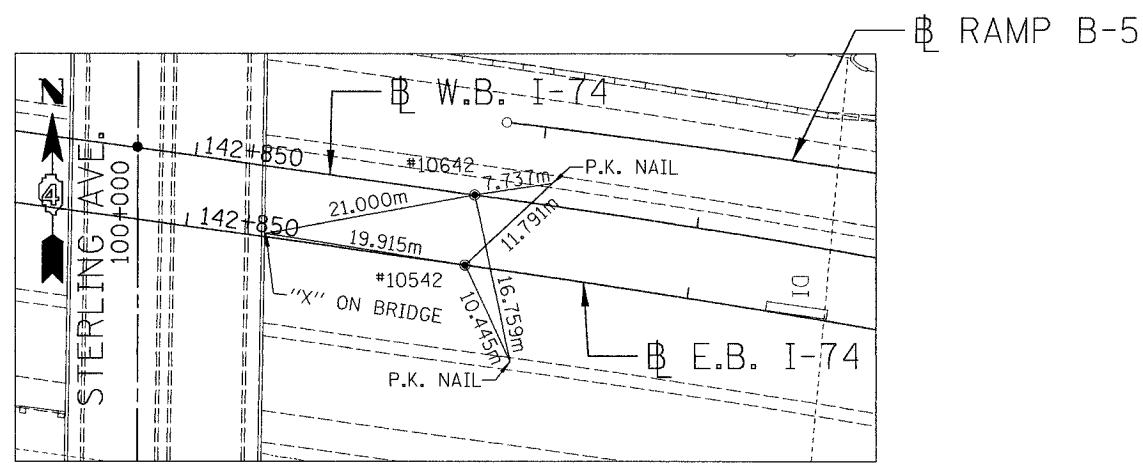
REFERENCE POINTS - 8021 & 8006

#8006 (N 452,111.5299 E 744,645.0293) STA. 142+299.840
 #8021 (N 452,118.4638 E 744,645.9937) STA. 142+299.841



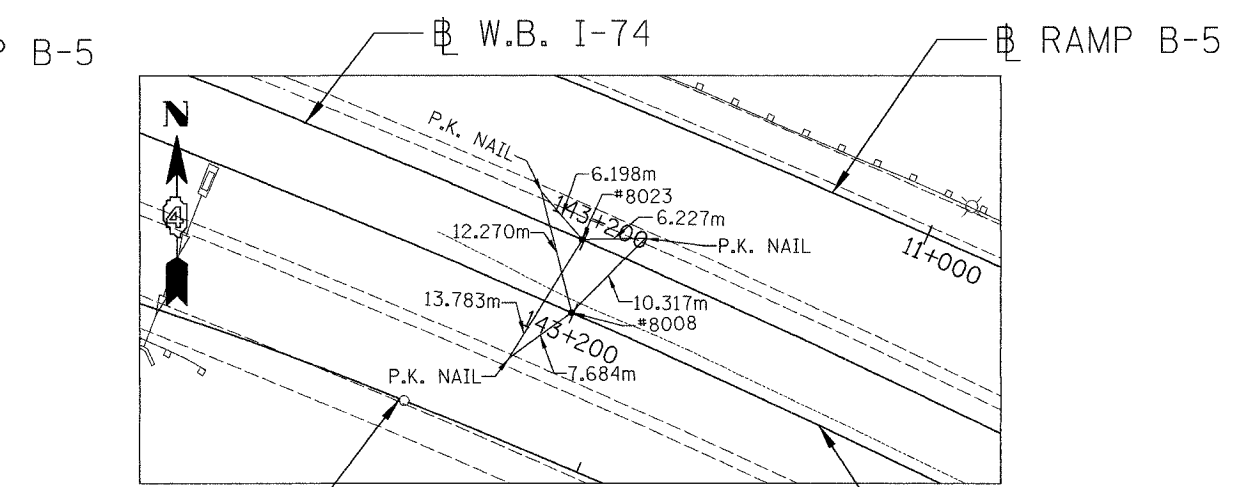
REFERENCE POINTS - 8007 & 8022

#8007 (N 452,070.2184 E 744,942.1536) STA. 142+599.823
 #8022 (N 452,077.1522 E 744,943.1181) STA. 142+599.823



REFERENCE POINTS - 10642 & 10542

#10542 (N 452,031.9325 E 745,217.5126) PC STA. 142+877.831
 #10642 (N 452,038.8661 E 745,218.4776) PC STA. 142+877.832



REFERENCE POINTS - 8008 & 8023

#8008 (N 451,944.3739 E 745,526.2711) STA. 143+199.788
 #8023 (N 451,951.5590 E 745,527.3194) STA. 143+199.788

REVISIONS	
NAME	DATE
Δ	23 JUN 2003

ILLINOIS DEPARTMENT OF TRANSPORTATION
 ALIGNMENTS, TIES AND BENCHMARKS
 FAI ROUTE 74 (I-74) (WB)
 DRAWN BY CADD
 CHECKED BY MKW
 DATE 11/12/04

