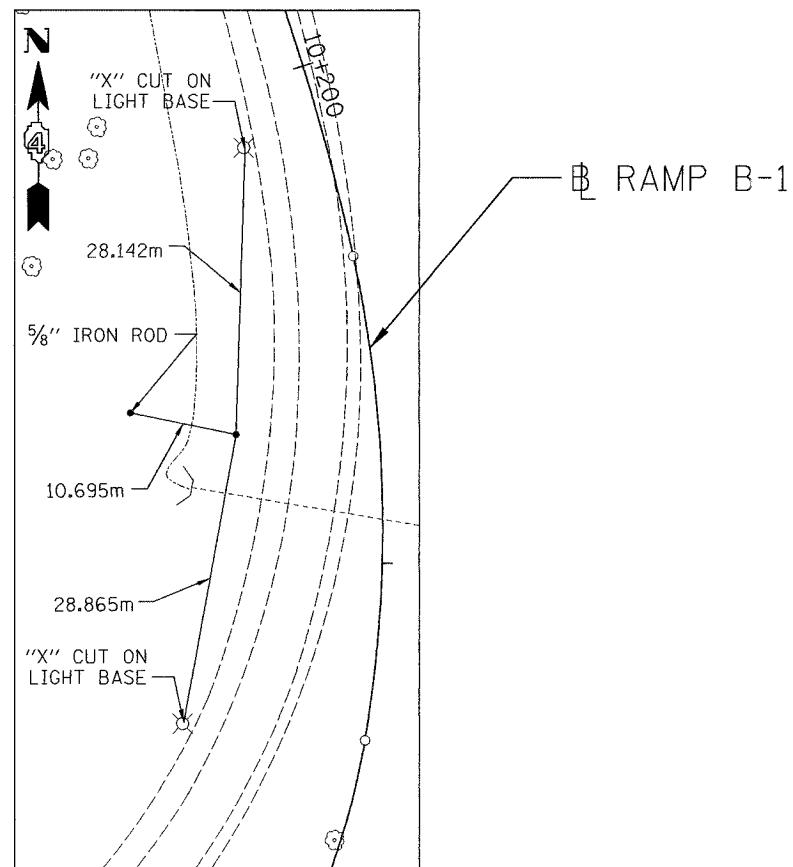


F.A. RTE.	SECTION	COUNTY	TOTAL SHEETS	SHEET NO.
74	(72-71R-3	PEORIA	1360	109
STA.		TO STA.		
FED. ROAD DIST. NO.		ILLINOIS FED. AID PROJECT		



EAST QUARTER CORNER

(N 451,492.7934 E 746,040.0019 GROUND COORDINATES) STA. 10+236.168

REVISIONS	
NAME	DATE

ILLINOIS DEPARTMENT OF TRANSPORTATION
ALIGNMENTS, TIES AND
BENCHMARKS
FAI ROUTE 74 (I-74) (WB)
DRAWN BY CADD
CHECKED BY MWP
DATE 11/12/04

