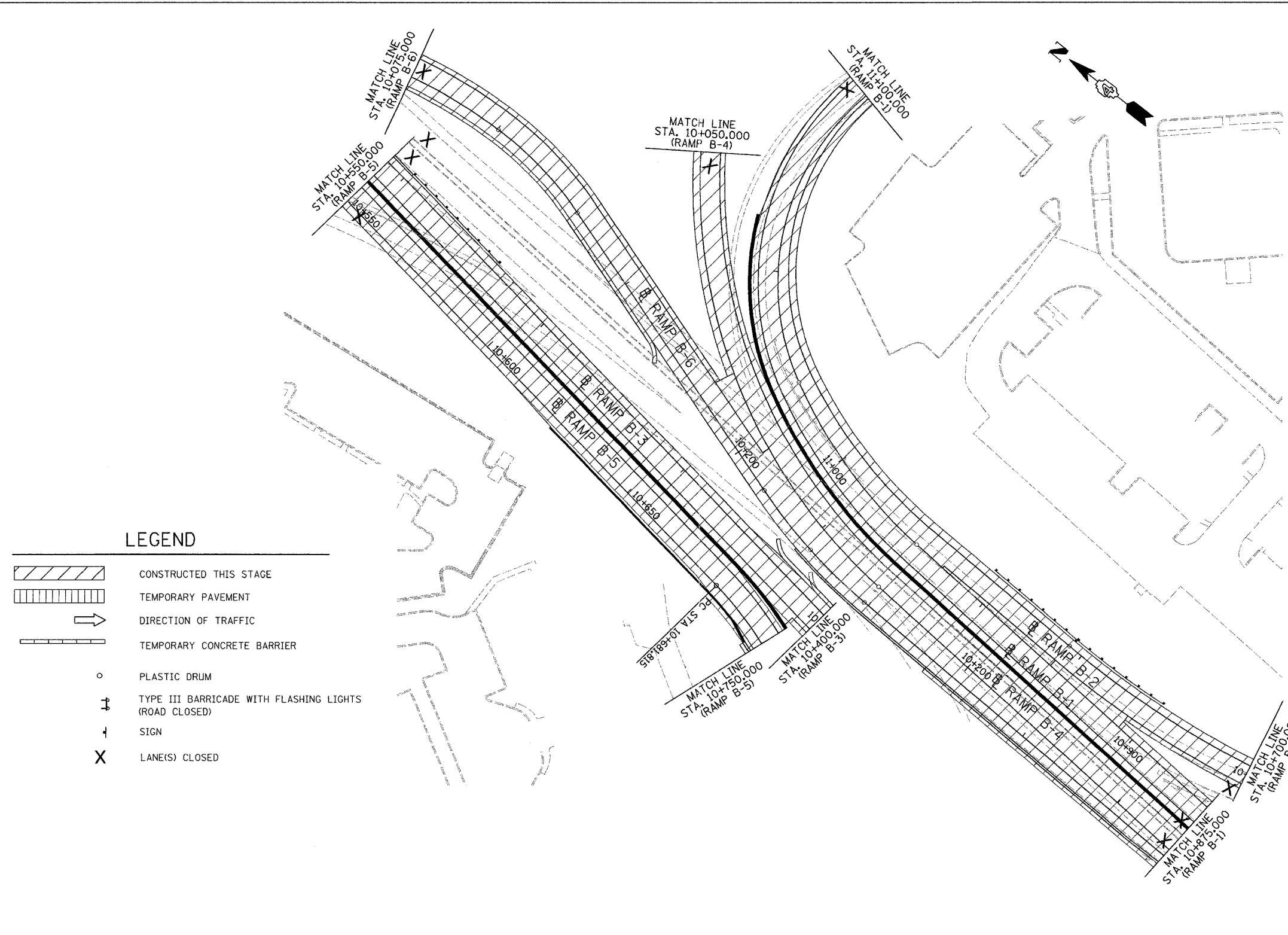
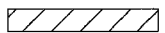

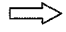
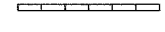
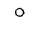
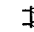


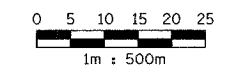


F.A. RTE.	SECTION	COUNTY	TOTAL SHEETS	SHEET NO.
74	(72-7)R-3	PEORIA	1360	133
STA.		TO STA.		
FED. ROAD DIST. NO.		ILLINOIS	FED. AID PROJECT	



**LEGEND**

-  CONSTRUCTED THIS STAGE
-  TEMPORARY PAVEMENT
-  DIRECTION OF TRAFFIC
-  TEMPORARY CONCRETE BARRIER
-  PLASTIC DRUM
-  TYPE III BARRICADE WITH FLASHING LIGHTS (ROAD CLOSED)
-  SIGN
-  LANE(S) CLOSED



**PARSONS**  
TRANSPORTATION GROUP  
Engineers and Planners

REVISIONS	
NAME	DATE

ILLINOIS DEPARTMENT OF TRANSPORTATION  
MAINTENANCE OF TRAFFIC  
FAI ROUTE 74 (I-74 WB)  
STAGE 3-1  
RAMPS B-1, B-2, B-3, B-4, B-5 & B-6  
DRAWN BY CADD  
CHECKED BY KJW  
DATE 11/12/04