

F.A. RTE.	SECTION	COUNTY	TOTAL SHEETS	SHEET NO.
74	(72-7)R-3	PEORIA	1360	186
STA. 143+650.000 TO STA. 143+950.000				
FED. ROAD DIST. NO.		ILLINOIS	FED. AID PROJECT	

PAVEMENT MARKING LEGEND

- ①X 100 (4) SOLID
- ②X 150 (6) SOLID
- ③X 200 (8) SOLID
- ④X 300 (12) SOLID
- ⑤X 600 (24) SOLID
- ⑥X 100 (4) DOUBLE SOLID
- ⑦X 100 (4) SKIP DASH
- ⑧X 150 (6) SKIP DASH
- ⑨X 200 (8) SKIP DASH
- ⑩X 200 (8) DOTTED
- ⑪X LETTERS AND ARROWS

RAISED REFLECTIVE PAVEMENT MARKERS

- 1 < ONE-WAY CRYSTAL MARKER AT 24.38 m(80') CENTERS
- 2 < ONE-WAY CRYSTAL MARKER AT 12.19 m(40') CENTERS
- 3 < ONE-WAY CRYSTAL MARKER AT 6.10 m(20') CENTERS
- 4 < ONE-WAY AMBER MARKER AT 12.19 m(40') CENTERS
- 5 < TWO-WAY AMBER MARKER AT 12.19 m(40') CENTERS FOR SPEEDS LESS THAN 45 MPH
- 6 < TWO-WAY AMBER MARKER AT 24.38 m(80') CENTERS FOR SPEEDS GREATER THAN 45 MPH

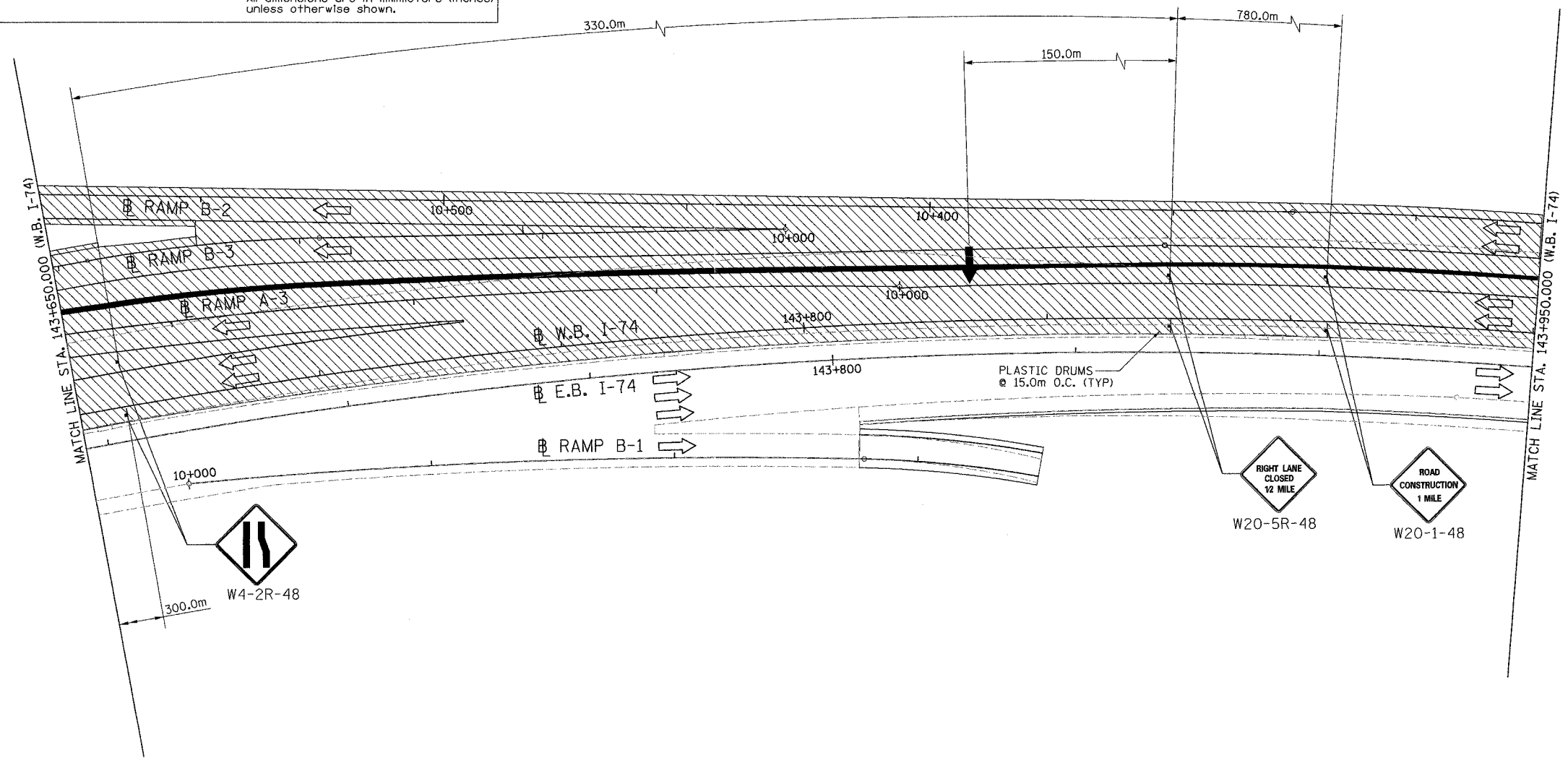
WHERE "X" DESIGNATES:
 E = EPOXY
 P = PAINT
 T = THERMOPLASTIC
 TP = TEMPORARY PAVEMENT MARKING TAPE
 T3 = PAVEMENT MARKING TAPE, TYPE III
 W3 = WET TEMPORARY PAVEMENT MARKING TAPE, TYPE III

— WHITE
 — YELLOW

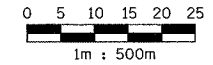
All dimensions are in millimeters (Inches) unless otherwise shown.

LEGEND

- CONSTRUCTED THIS STAGE
- CONSTRUCTED IN PRECEDING STAGES
- TEMPORARY PAVEMENT
- DIRECTION OF TRAFFIC
- TEMPORARY CONCRETE BARRIER WITH CLARE SCREEN
- PLASTIC DRUM
- TYPE III BARRICADE WITH FLASHING LIGHTS (ROAD CLOSED)
- SIGN
- LANE(S) CLOSED
- ARROW BOARD



NOTE:
 1. SEE PAVEMENT MARKING PLANS FOR PROPOSED PERMANENT PAVEMENT MARKINGS



PARSONS
TRANSPORTATION GROUP
 Engineers and Planners

REVISIONS	
NAME	DATE

ILLINOIS DEPARTMENT OF TRANSPORTATION
 MAINTENANCE OF TRAFFIC
 FAI ROUTE 74 (I-74 WB)
 STAGE 3-4; SUBSTAGE 2
 STA. 143+650.000 - STA. 143+950.000

DATE 11/12/04

DRAWN BY CADD
 CHECKED BY KJW