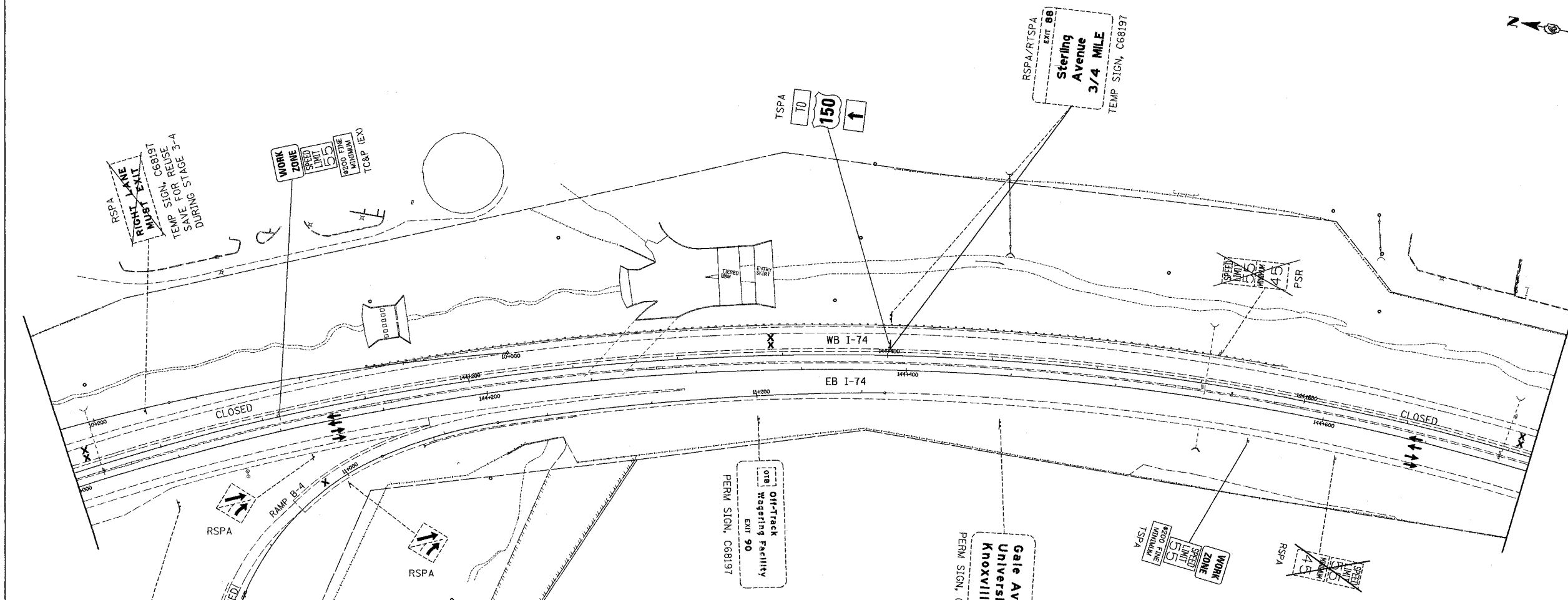


| | | | | |
|---------------------|------------|---------------------------|--------------|-----------|
| F.A.I. RTE. | SECTION | COUNTY | TOTAL SHEETS | SHEET NO. |
| 74 | (72-70R-3) | PEORIA | 1260 | 193 |
| STA. | | TO STA. | | |
| FED. ROAD DIST. NO. | | ILLINOIS FED. AID PROJECT | | |



PERM SIGN, C68197
Gale Ave
 1/2 MILE
 EXIT 90

- LEGEND:**
- PERM SIGN, C68197 - PERMANENT SIGN, INSTALLED IN CONTRACT NO. 68197
 - TEMP SIGN, C68193 - EXISTING TEMPORARY SIGN INSTALLED IN CONTRACT 68193
 - RET - RETAIN EXISTING SIGN
 - PSR - REMOVAL IN PERMANENT SIGNING PLANS (TIMING OF REMOVAL INDICATED IN SUB-STAGE BY 'X'S)
 - RTSPA - REINSTALL TEMPORARY SIGN PANEL ASSEMBLY (INCLUDES REMOVAL)
 - CTSO - COMPOSITE TEMPORARY SIGN OVERLAY (INCLUDES REMOVAL)
 - SPO(S) - SIGN PANEL OVERLAY, SPECIAL (INCLUDES REMOVAL)
 - TSPO - TEMPORARY SIGN PANEL OVERLAY (INCLUDES REMOVAL)
 - TSPA - TEMPORARY SIGN PANEL ASSEMBLY (INCLUDES REMOVAL)
 - RSPA - REMOVE SIGN PANEL ASSEMBLY
 - RELSPA - RELOCATE SIGN PANEL ASSEMBLY
 - SP - SIGN PANEL, TYPE 1, 2 OR 3 AND ASSEMBLY TYPE A OR B.
 - TC&P(SP) - SIGN INCLUDED IN MOT STANDARD FOR TRAFFIC CONTROL (PAID AS PART OF TRAFFIC CONTROL AND PROTECTION, SPECIAL)
 - TC&P(EX) - SIGN INCLUDED IN MOT STANDARD FOR TRAFFIC CONTROL AND PROTECTION (PAID AS PART OF TRAFFIC CONTROL AND PROTECTION, EXPRESSWAYS)

| REVISIONS | |
|-----------|------|
| NAME | DATE |
| | |
| | |
| | |
| | |
| | |
| | |
| | |
| | |
| | |
| | |

ILLINOIS DEPARTMENT OF TRANSPORTATION
 CONCEPTUAL TEMPORARY
 INFORMATION SIGNING PLAN
 CONTRACT 68200
 STAGES 3-1, 3-2, 3-3
 DRAWN BY CADD
 CHECKED BY MWP
 DATE: 11/12/04



*****FILE*****