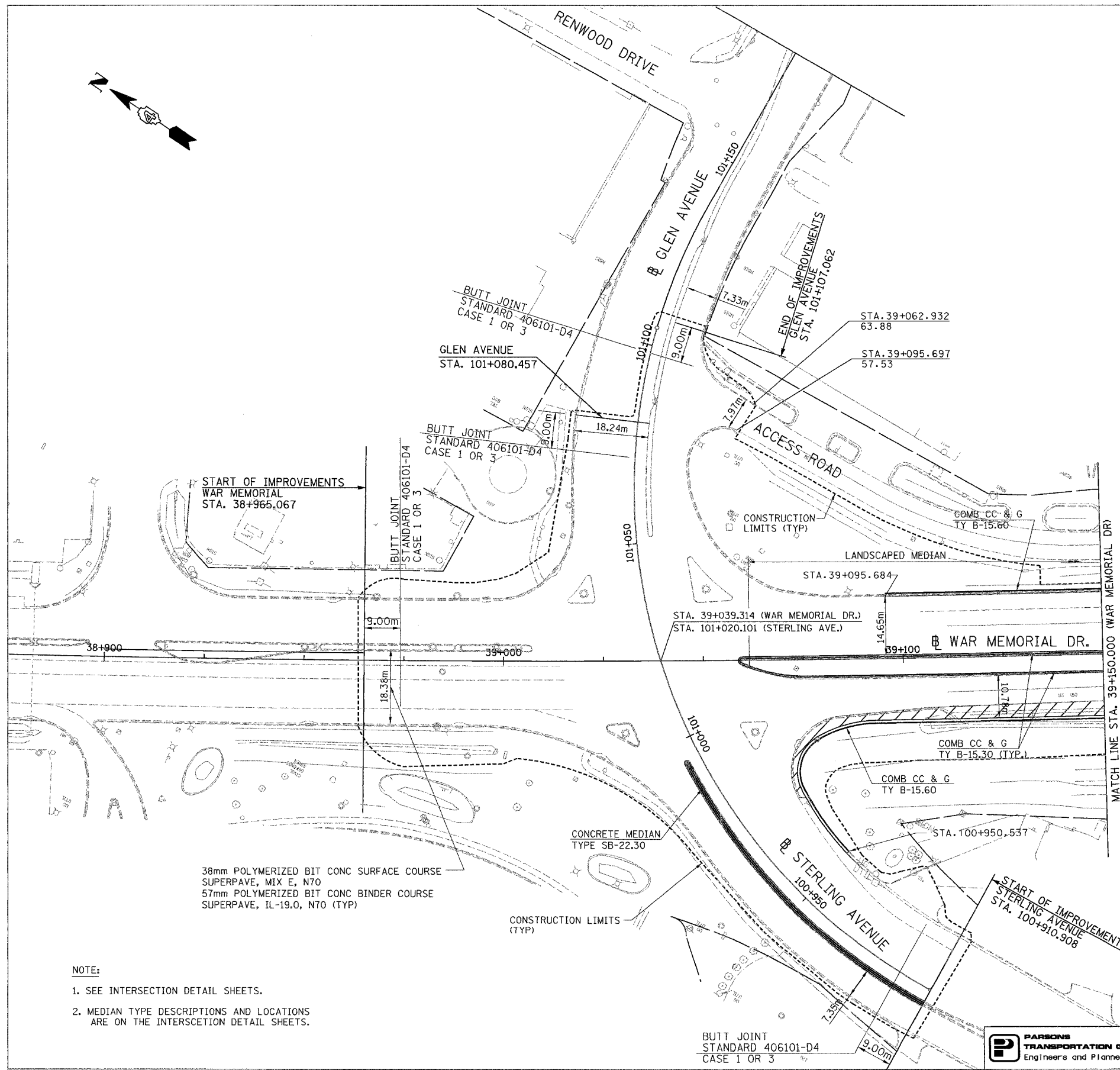


F.A. RTE.	SECTION	COUNTY	TOTAL SHEETS	SHEET NO.
74	(72-7)R-3	PEORIA	1360	249
STA.		TO STA.		
FED. ROAD DIST. NO.		ILLINOIS	FED. AID PROJECT	

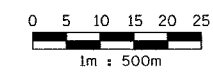


LEGEND

	BITUMINOUS SHOULDERS
	PAVEMENT WIDENING

38mm POLYMERIZED BIT CONC SURFACE COURSE
SUPERPAVE, MIX E, N70
57mm POLYMERIZED BIT CONC BINDER COURSE
SUPERPAVE, IL-19.0, N70 (TYP)

- NOTE:
1. SEE INTERSECTION DETAIL SHEETS.
 2. MEDIAN TYPE DESCRIPTIONS AND LOCATIONS ARE ON THE INTERSECTION DETAIL SHEETS.



REVISIONS	
NAME	DATE

ILLINOIS DEPARTMENT OF TRANSPORTATION
PROPOSED ROADWAY PLAN
 WAR MEMORIAL DRIVE
 STA. 38+965.067- STA. 39+150.000
 DRAWN BY CADD
 CHECKED BY KJW
 DATE 11/12/04

