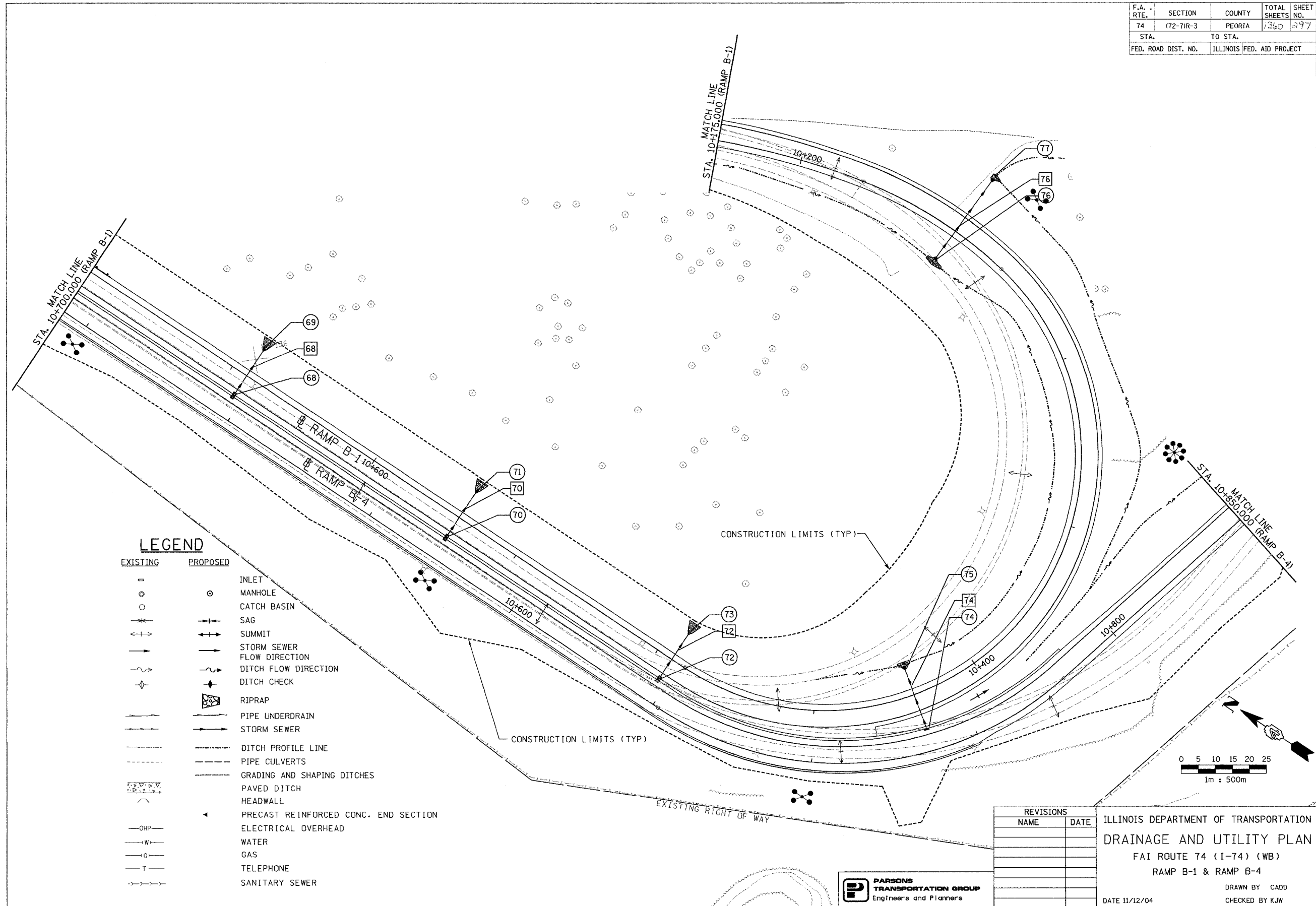
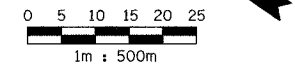


F.A. RTE.	SECTION	COUNTY	TOTAL SHEETS	SHEET NO.
74	(72-71R-3)	PEORIA	1360	297
STA.		TO STA.		
FED. ROAD DIST. NO.		ILLINOIS		FED. AID PROJECT



LEGEND

EXISTING	PROPOSED	
□	○	INLET
○	○	MANHOLE
○	○	CATCH BASIN
✱	⇄	SAG
⇄	⇄	SUMMIT
→	→	STORM SEWER FLOW DIRECTION
→	→	DITCH FLOW DIRECTION
◆	◆	DITCH CHECK
▨	▨	RIPRAP
→	→	PIPE UNDERDRAIN
→	→	STORM SEWER
---	---	DITCH PROFILE LINE
---	---	PIPE CULVERTS
---	---	GRADING AND SHAPING DITCHES
---	---	PAVED DITCH
---	---	HEADWALL
◀	◀	PRECAST REINFORCED CONC. END SECTION
—OHP—		ELECTRICAL OVERHEAD
—W—		WATER
—G—		GAS
—T—		TELEPHONE
—SS—		SANITARY SEWER



REVISIONS	
NAME	DATE

ILLINOIS DEPARTMENT OF TRANSPORTATION
DRAINAGE AND UTILITY PLAN
FAI ROUTE 74 (I-74) (WB)
RAMP B-1 & RAMP B-4
DRAWN BY CADD
CHECKED BY KJW
DATE 11/12/04

