

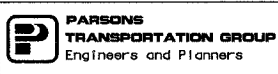
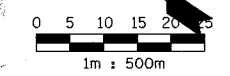
F.A. RTE.	SECTION	COUNTY	TOTAL SHEETS	SHEET NO.
74	(72-7)R-3	PEORIA	1360	760
STA. 39+850.000		TO STA. 40+175.000		
FED. ROAD DIST. NO.		ILLINOIS FED. AID PROJECT		

LEGEND

- | EXISTING | PROPOSED | |
|----------|----------|--------------------------------------|
| ○ | ⊙ | INLET |
| ○ | ⊙ | MANHOLE |
| ○ | ⊙ | CATCH BASIN |
| ⊙ | ⊙ | SAG |
| ⊙ | ⊙ | SUMMIT |
| → | → | STORM SEWER FLOW DIRECTION |
| → | → | DITCH FLOW DIRECTION |
| ⊙ | ⊙ | DITCH CHECK |
| ⊙ | ⊙ | RIPRAP |
| ⊙ | ⊙ | PIPE UNDERDRAIN |
| ⊙ | ⊙ | STORM SEWER |
| ⊙ | ⊙ | DITCH PROFILE LINE |
| ⊙ | ⊙ | PIPE CULVERTS |
| ⊙ | ⊙ | GRADING AND SHAPING DITCHES |
| ⊙ | ⊙ | PAVED DITCH |
| ⊙ | ⊙ | HEADWALL |
| ⊙ | ⊙ | PRECAST REINFORCED CONC. END SECTION |
| ⊙ | ⊙ | ELECTRICAL OVERHEAD |
| ⊙ | ⊙ | WATER |
| ⊙ | ⊙ | GAS |
| ⊙ | ⊙ | TELEPHONE |
| ⊙ | ⊙ | SANITARY SEWER |

REVISIONS	
NAME	DATE

ILLINOIS DEPARTMENT OF TRANSPORTATION
DRAINAGE AND UTILITY PLAN
 WAR MEMORIAL DRIVE
 STA. 39+850.000 - STA. 40+175.000
 DRAWN BY CADD
 CHECKED BY KJW
 DATE 11/12/04



P:\643996\CIVIL\SHWB\DP0016-IAWM.DGN