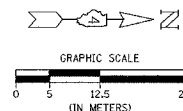
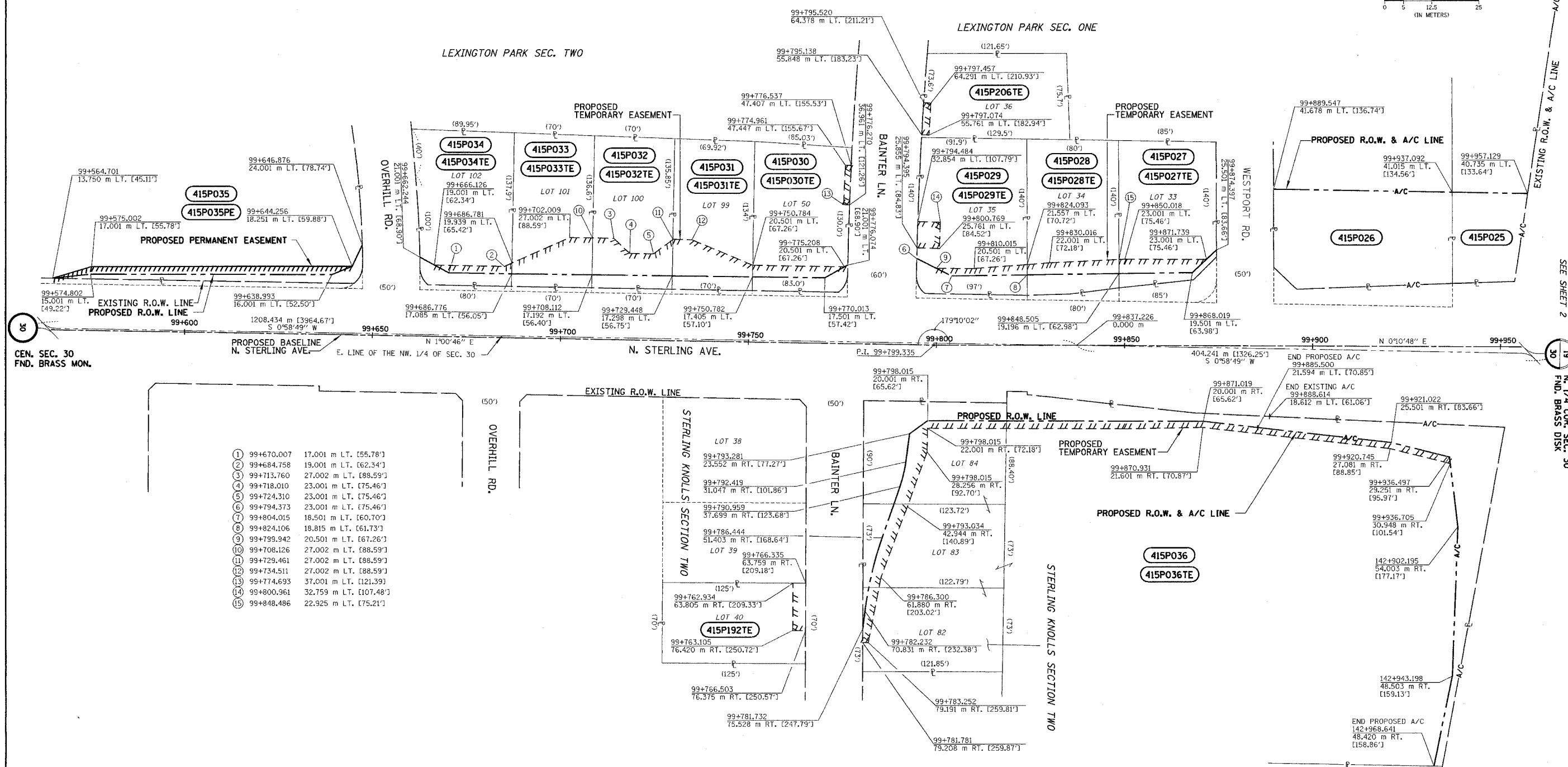


TOWNSHIP 9 NORTH, RANGE 8 EAST, 4th P.M.



APPROVED BY _____
DISTRICT ENGINEER
DATE _____



- ① 99+670.007 17.001 m LT. [55.78']
- ② 99+684.758 19.001 m LT. [62.34']
- ③ 99+713.760 27.002 m LT. [88.59']
- ④ 99+718.010 23.001 m LT. [75.46']
- ⑤ 99+724.310 23.001 m LT. [75.46']
- ⑥ 99+794.373 23.001 m LT. [75.46']
- ⑦ 99+804.015 18.501 m LT. [60.70']
- ⑧ 99+824.106 18.815 m LT. [61.73']
- ⑨ 99+799.942 20.501 m LT. [67.26']
- ⑩ 99+708.126 27.002 m LT. [88.59']
- ⑪ 99+729.461 27.002 m LT. [88.59']
- ⑫ 99+734.511 27.002 m LT. [88.59']
- ⑬ 99+774.693 37.001 m LT. [121.39']
- ⑭ 99+800.961 32.759 m LT. [107.48']
- ⑮ 99+848.486 22.925 m LT. [75.21']

DRAWN BY _____
WRITTEN BY _____
CHECKED BY _____
INSPECTED BY _____

NOTES:
SURVEYED IN METRIC, DIMENSIONS SHOWN IN ENGLISH HAVE BEEN CONVERTED (1 METER = 3.28083333'). METRIC DIMENSIONS AND AREAS SHALL CONTROL.
() ENGLISH EQUIVALENT
() RECORD DATA

NOTE: PROJECT DATUM IS NAD83 ILLINOIS STATE PLANE COORDINATES, WEST ZONE. THE PROJECT COMBINATION FACTOR IS 0.999941679. ALL LAND ACQUISITION DOCUMENTS WERE PROJECTED TO "GROUND" COORDINATES. FINAL STAKED ALIGNMENTS WERE PROJECTED TO "GROUND" COORDINATES. ALL CONSTRUCTION DOCUMENTS WERE DEVELOPED USING "GRID" COORDINATES.

**RIGHT OF WAY PLANS
F.A.I. ROUTE 74**

CATALOG NO. 031087-00
SECTION 72-8R-1,72(9,9-1)R
STATION 99+550 TO 99+950
JOB. NO. R-94-015-98 COUNTY PEORIA
SCALE 1 : 500 SHEET 321 OF 1360