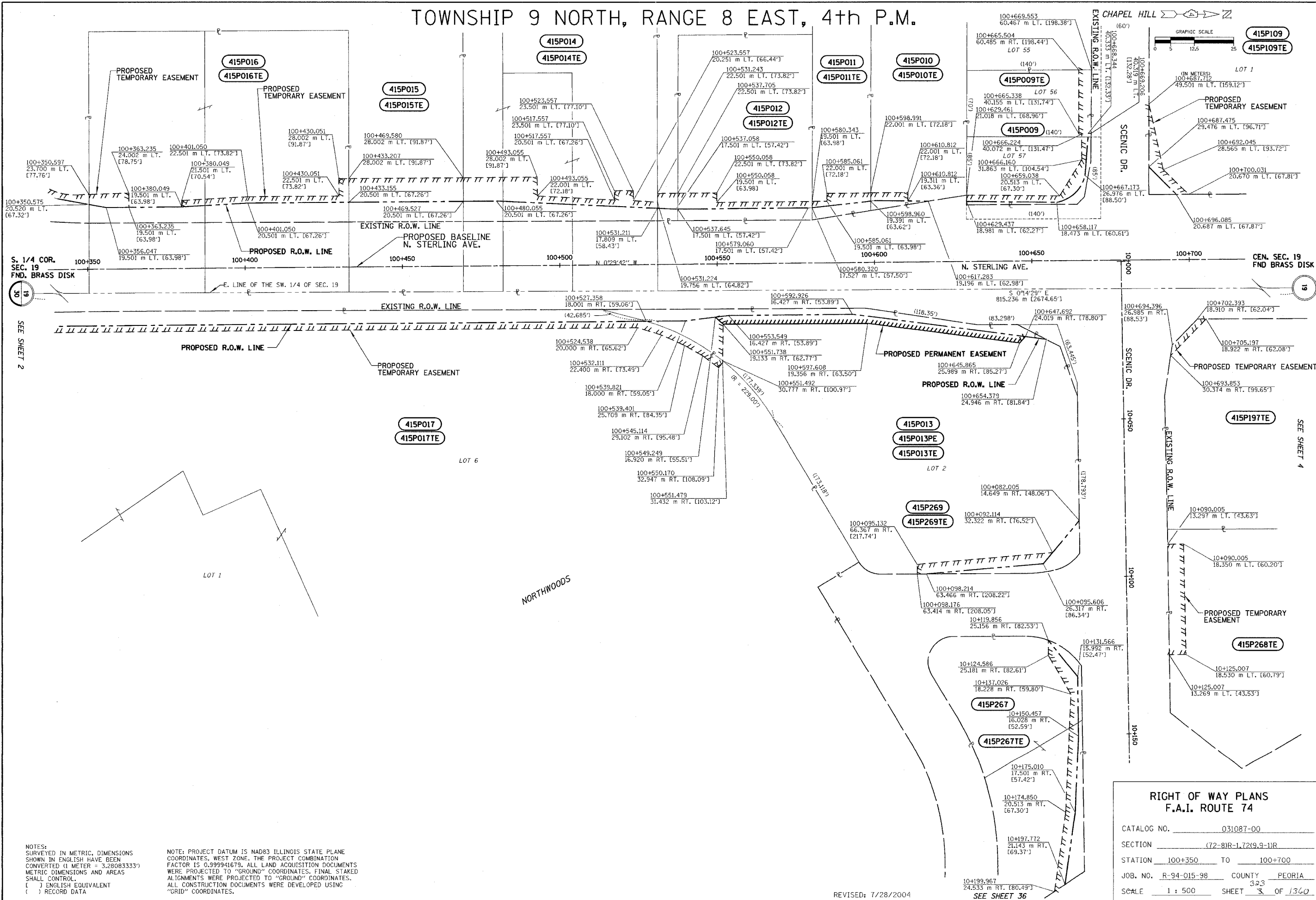


TOWNSHIP 9 NORTH, RANGE 8 EAST, 4th P.M.



APPROVED BY _____ DISTRICT ENGINEER
DATE _____

GRAPHIC SCALE 0 5 12.5 25
 415P109
 415P109TE

**RIGHT OF WAY PLANS
F.A.I. ROUTE 74**

CATALOG NO. 031087-00
 SECTION 72-81R-1, 72(9-9)-1R
 STATION 100+350 TO 100+700
 JOB NO. R-94-015-98 COUNTY PEORIA
 SCALE 1 : 500 SHEET 33 OF 1360

NOTES:
 SURVEYED IN METRIC, DIMENSIONS SHOWN IN ENGLISH HAVE BEEN CONVERTED (1 METER = 3.28083333') METRIC DIMENSIONS AND AREAS SHALL CONTROL.
 () ENGLISH EQUIVALENT
 () RECORD DATA

NOTE: PROJECT DATUM IS NAD83 ILLINOIS STATE PLANE COORDINATES, WEST ZONE. THE PROJECT COMBINATION FACTOR IS 0.999941679. ALL LAND ACQUISITION DOCUMENTS WERE PROJECTED TO "GROUND" COORDINATES. FINAL STAKED ALIGNMENTS WERE PROJECTED TO "GROUND" COORDINATES. ALL CONSTRUCTION DOCUMENTS WERE DEVELOPED USING "GRID" COORDINATES.

REVISED: 7/28/2004

SEE SHEET 36

DRAWN BY _____
 WRITTEN BY _____
 CHECKED BY _____
 INSPECTED BY _____

S. 1/4 COR. SEC. 19 FND. BRASS DISK

19

SEE SHEET 2

CEN. SEC. 19 FND. BRASS DISK

19

SEE SHEET 4