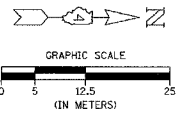


# TOWNSHIP 9 NORTH, RANGE 8 EAST, 4th P.M.

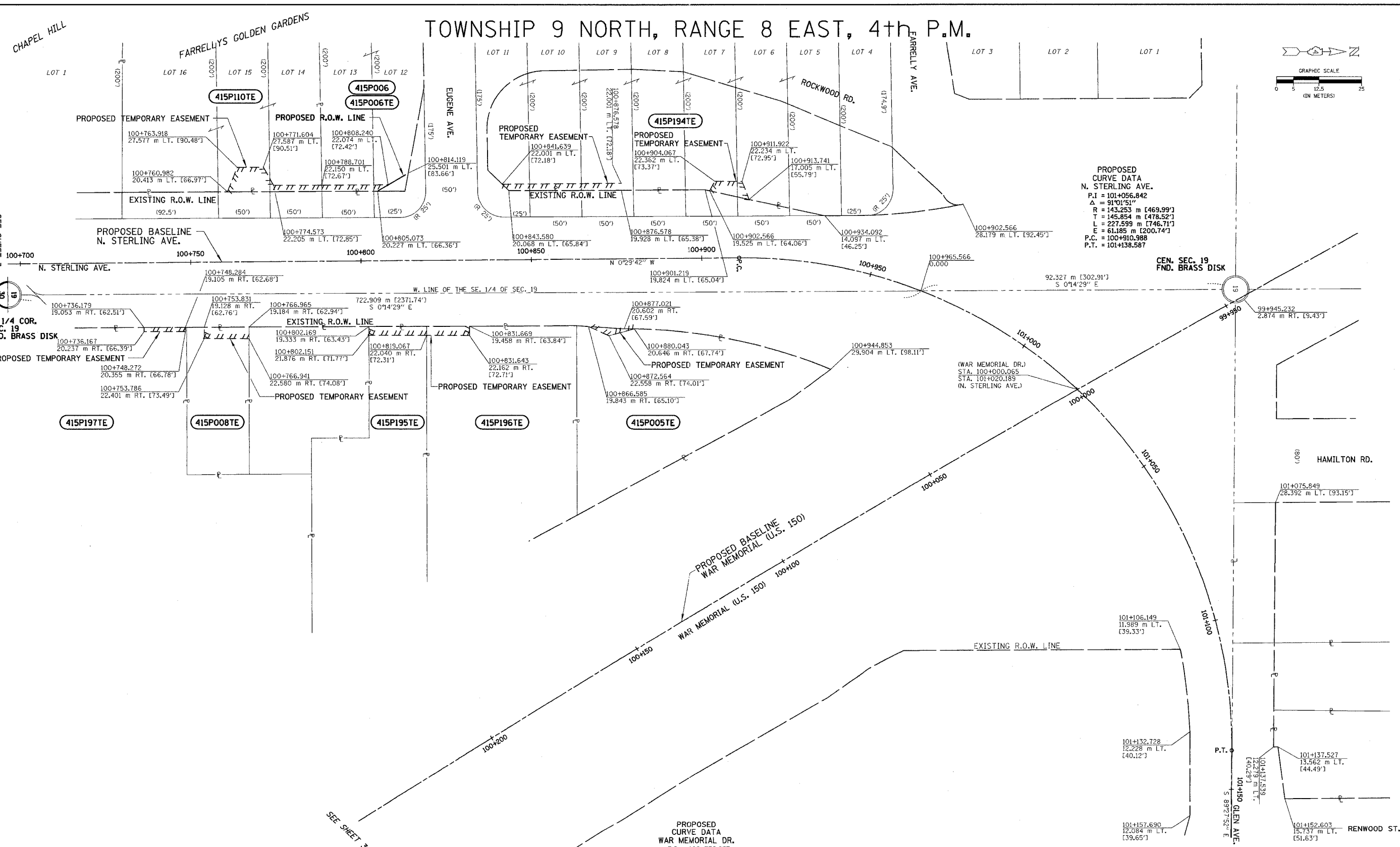


APPROVED BY \_\_\_\_\_  
DISTRICT ENGINEER  
DATE \_\_\_\_\_

SEE SHEET 3

S. 1/4 COR. SEC. 19 FND. BRASS DISK

SEE SHEET 36



**PROPOSED CURVE DATA  
N. STERLING AVE.**  
 P.I. = 101+056.842  
 $\Delta = 91^{\circ}01'51''$   
 R = 143.253 m [469.99']  
 T = 145.854 m [478.52']  
 L = 227.599 m [746.71']  
 E = 61.185 m [200.74']  
 P.C. = 100+910.988  
 P.T. = 101+138.587

**PROPOSED CURVE DATA  
WAR MEMORIAL DR.**  
 P.I. = 100+736.837  
 $\Delta = 20^{\circ}20'45''$   
 R = 5374.661 m [17633.37']  
 T = 964.437 m [3164.18']  
 L = 1908.563 m [6261.68']  
 E = 85.845 m [281.64']  
 P.C. = 99+772.400  
 P.T. = 101+680.963

NOTES:  
 SURVEYED IN METRIC, DIMENSIONS SHOWN IN ENGLISH HAVE BEEN CONVERTED (1 METER = 3.28083333'). METRIC DIMENSIONS AND AREAS SHALL CONTROL.  
 ( ) ENGLISH EQUIVALENT  
 ( ) RECORD DATA

NOTE: PROJECT DATUM IS NAD83 ILLINOIS STATE PLANE COORDINATES, WEST ZONE. THE PROJECT COMBINATION FACTOR IS 0.999941679. ALL LAND ACQUISITION DOCUMENTS WERE PROJECTED TO "GROUND" COORDINATES. FINAL STAKED ALIGNMENTS WERE PROJECTED TO "GROUND" COORDINATES. ALL CONSTRUCTION DOCUMENTS WERE DEVELOPED USING "GRID" COORDINATES.

## RIGHT OF WAY PLANS F.A.I. ROUTE 74

CATALOG NO. 031087-00  
 SECTION (72-B)R-1.72(9.9-1)R  
 STATION 100+700 TO 101+150  
 JOB. NO. R-94-015-98 COUNTY PEORIA  
 SCALE 1 : 500 SHEET 324 OF 1360