

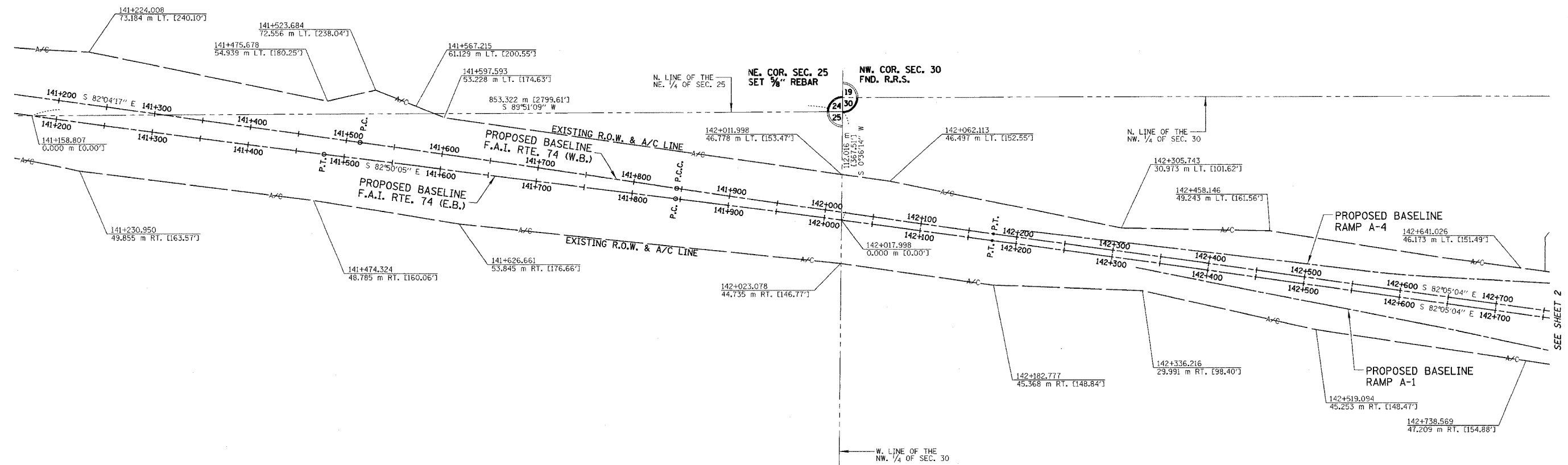
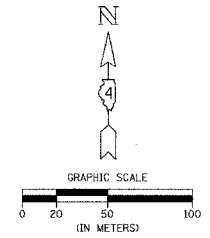
APPROVED BY _____ DISTRICT ENGINEER
DATE _____

PROPOSED CURVE DATA
RTE. 74 (W.B.)
P.I. = 141+679.491
 $\Delta = 0^{\circ}34'29''$
R = 32960.587 m [108138.19']
T = 165.305 m [542.34']
L = 330.607 m [1084.67']
E = 0.415 m [1.362']
P.C.C. = 141+514.186
P.T. = 141+844.793

PROPOSED CURVE DATA
RTE. 74 (W.B.)
P.I. = 142+010.158
 $\Delta = 0^{\circ}35'16''$
R = 32238.192 m [105768.13']
T = 165.365 m [542.54']
L = 330.727 m [1085.06']
E = 0.424 m [1.39']
P.C.C. = 141+844.793
P.T. = 142+175.520

PROPOSED CURVE DATA
RTE. 74 (E.B.)
P.I. = 141+314.028
 $\Delta = 0^{\circ}45'47''$
R = 24779.445 m [81297.23']
T = 165.015 m [541.39']
L = 330.025 m [1082.76']
E = 0.549 m [1.80']
P.C. = 141+149.013
P.T. = 141+479.039

PROPOSED CURVE DATA
RTE. 74 (E.B.)
P.I. = 142+010.199
 $\Delta = 0^{\circ}45'00''$
R = 25211.871 m [82715.95']
T = 165.014 m [541.38']
L = 330.023 m [1082.75']
E = 0.540 m [1.77']
P.C. = 141+845.185
P.T. = 142+175.209



DRAWN BY _____
WRITTEN BY _____
CHECKED BY _____
INSPECTED BY _____

NOTES:
SURVEYED IN METRIC, DIMENSIONS SHOWN IN ENGLISH HAVE BEEN CONVERTED (1 METER = 3.28083333'). METRIC DIMENSIONS AND AREAS SHALL CONTROL.
() ENGLISH EQUIVALENT
() RECORD DATA

NOTE: PROJECT DATUM IS NAD83 ILLINOIS STATE PLANE COORDINATES, WEST ZONE. THE PROJECT COMBINATION FACTOR IS 0.999941679. ALL LAND ACQUISITION DOCUMENTS WERE PROJECTED TO "GROUND" COORDINATES. FINAL STAKED ALIGNMENTS WERE PROJECTED TO "GROUND" COORDINATES. ALL CONSTRUCTION DOCUMENTS WERE DEVELOPED USING "GRID" COORDINATES.

NOTE: STATION OFFSETS SHOWN FROM F.A.I. RTE. 74 ARE FROM THE (E.B.) BASELINE.

RIGHT OF WAY PLANS	
F.A.I. ROUTE 74	
CATALOG NO.	031087-00
SECTION	(72-8)R-1,72(9,9-1)R
STATION	141+200 TO 142+750
JOB. NO.	R-94-015-98 COUNTY PEORIA
SCALE	1 : 2000 SHEET 328 OF 360