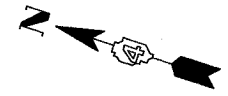
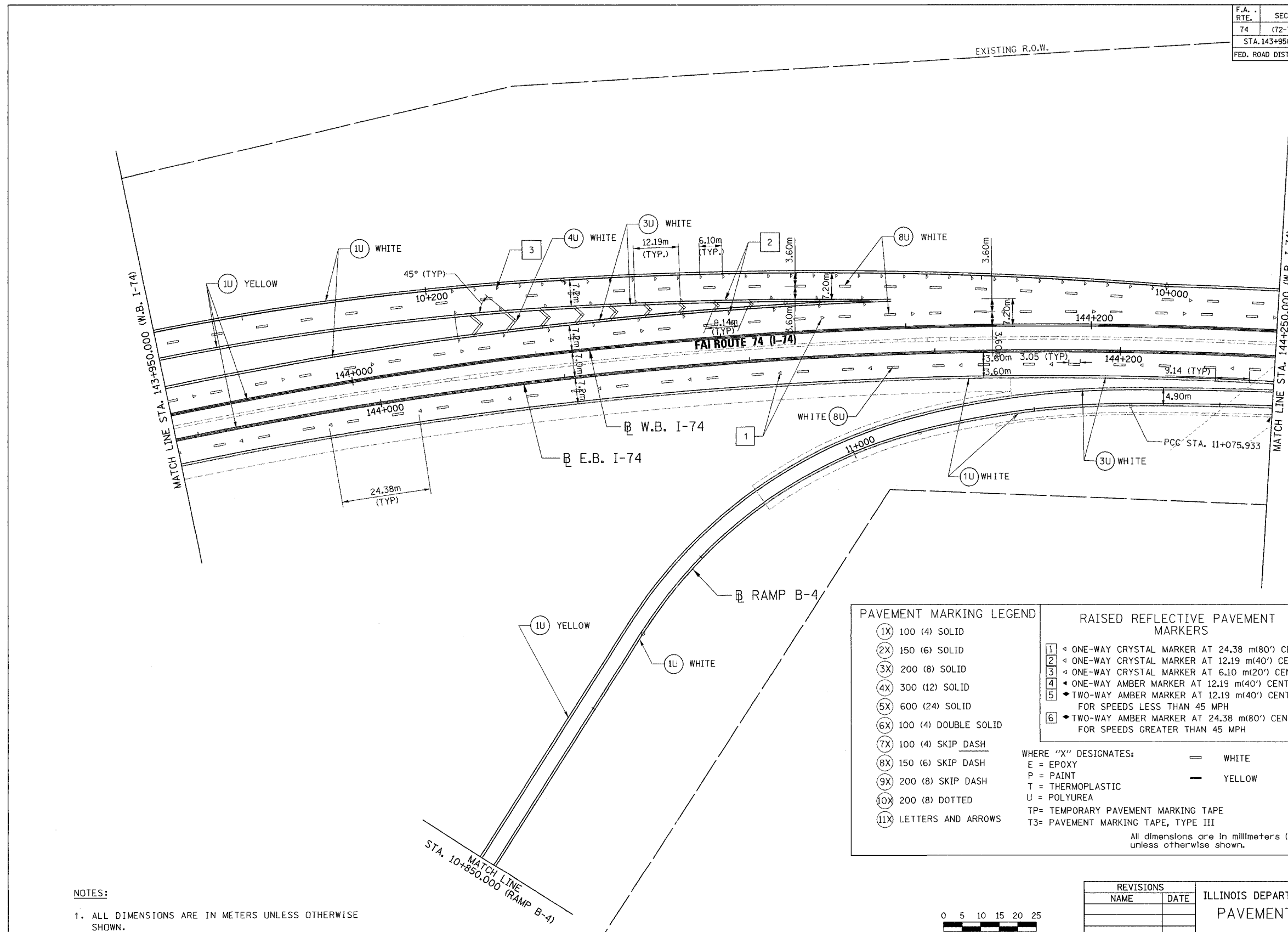


F.A. RTE.	SECTION	COUNTY	TOTAL SHEETS	SHEET NO.
74	(72-7)R-3	PEORIA	1360	357
STA. 143+950.000		TO STA. 144+250.000		
FED. ROAD DIST. NO.	ILLINOIS	FED. AID PROJECT		

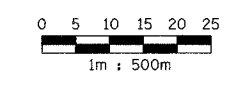


PAVEMENT MARKING LEGEND		RAISED REFLECTIVE PAVEMENT MARKERS	
(1X)	100 (4) SOLID	1	◁ ONE-WAY CRYSTAL MARKER AT 24.38 m(80') CENTERS
(2X)	150 (6) SOLID	2	◁ ONE-WAY CRYSTAL MARKER AT 12.19 m(40') CENTERS
(3X)	200 (8) SOLID	3	◁ ONE-WAY CRYSTAL MARKER AT 6.10 m(20') CENTERS
(4X)	300 (12) SOLID	4	◁ ONE-WAY AMBER MARKER AT 12.19 m(40') CENTERS
(5X)	600 (24) SOLID	5	◆ TWO-WAY AMBER MARKER AT 12.19 m(40') CENTERS FOR SPEEDS LESS THAN 45 MPH
(6X)	100 (4) DOUBLE SOLID	6	◆ TWO-WAY AMBER MARKER AT 24.38 m(80') CENTERS FOR SPEEDS GREATER THAN 45 MPH
(7X)	100 (4) SKIP DASH		
(8X)	150 (6) SKIP DASH		
(9X)	200 (8) SKIP DASH		
(10X)	200 (8) DOTTED		
(11X)	LETTERS AND ARROWS		

WHERE "X" DESIGNATES: = WHITE
E = EPOXY = YELLOW
P = PAINT
T = THERMOPLASTIC
U = POLYUREA
TP= TEMPORARY PAVEMENT MARKING TAPE
T3= PAVEMENT MARKING TAPE, TYPE III

All dimensions are in millimeters (Inches) unless otherwise shown.

- NOTES:**
1. ALL DIMENSIONS ARE IN METERS UNLESS OTHERWISE SHOWN.
 2. LANE DIMENSIONS ARE TO CENTER OF PAVEMENT MARKING.



PARSONS
TRANSPORTATION GROUP
Engineers and Planners

REVISIONS	
NAME	DATE

ILLINOIS DEPARTMENT OF TRANSPORTATION
PAVEMENT MARKING PLAN
FAI ROUTE 74 (I-74) (WB)
STA. 143+950.000 - STA. 144+250.000
DATE 11/12/04
DRAWN BY CADD
CHECKED BY KJW