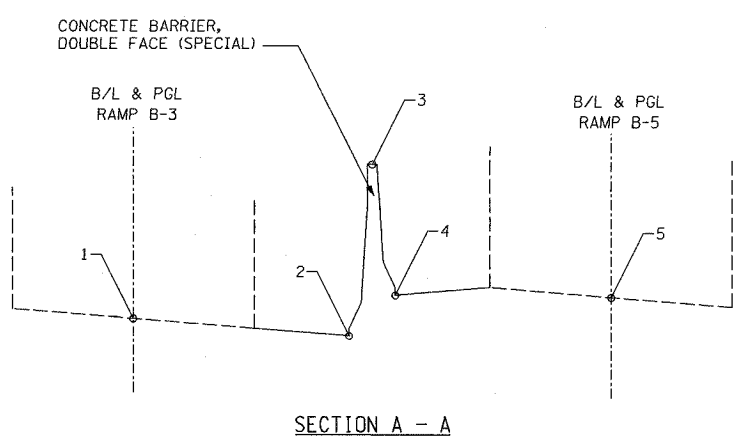
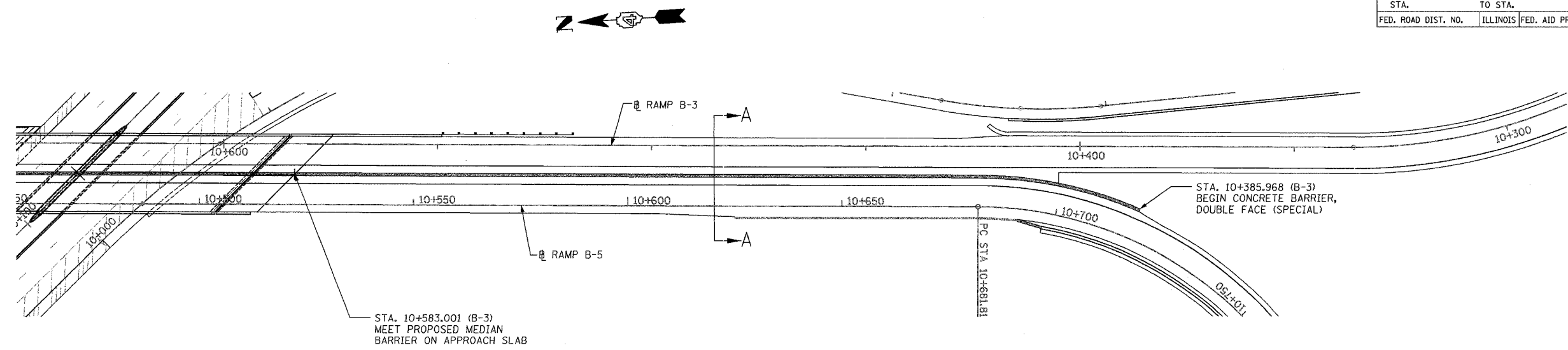
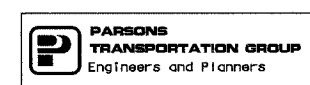
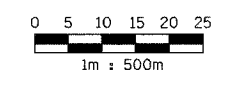


F.A. RTE.	SECTION	COUNTY	TOTAL SHEETS	SHEET NO.
74	(72-71R-3)	PEORIA	1360	409
STA.		TO STA.		
FED. ROAD DIST. NO.		ILLINOIS FED. AID PROJECT		



- NOTES:**
1. BARRIER BASE WIDTH EQUALS 0.685m
  2. BARRIER HEIGHT EQUALS 1.295m ON HIGH SIDE OF SHOULDER. ON LOW SIDE OF SHOULDER, HEIGHT EQUALS DIFFERENCE BETWEEN SHOULDER ELEVATION AND TOP OF BARRIER ELEVATION.
  3. BARRIER ON LOW SIDE OF SHOULDER RETAINS GM-SHAPE TO 1.295m HIGH THEN PROVIDES VERTICAL FACE TO ACHIEVE REQUIRED HEIGHT (SEE SPECIAL DETAIL)

RAMP B3 STATION	ELEVATIONS					RAMP B5 STATION
	1	2	3	4	5	
10+390.000	194.053	194.500	195.795	194.487	194.102	10+713.883
10+395.000	194.217	194.600	195.943	194.648	194.263	10+708.960
10+400.000	194.380	194.261	196.101	194.806	194.421	10+704.123
10+405.000	194.544	194.471	196.258	194.963	194.578	10+699.355
10+410.000	194.708	194.670	196.386	195.091	194.732	10+694.638
10+415.000	194.872	194.857	196.492	195.197	194.885	10+689.958
10+420.000	195.035	195.037	196.604	195.309	195.038	10+685.301
10+425.000	195.199	195.201	196.719	195.424	195.193	10+680.565
10+430.000	195.363	195.365	196.836	195.541	195.357	10+675.565
10+435.000	195.527	195.529	196.952	195.657	195.520	10+670.565
10+440.000	195.690	195.692	197.063	195.788	195.684	10+665.565
10+445.000	195.854	195.856	197.213	195.918	195.848	10+660.565
10+450.000	196.018	196.020	197.343	196.048	196.012	10+655.565
10+455.000	196.182	196.184	197.479	196.181	196.175	10+650.565
10+460.000	196.346	196.348	197.643	196.341	196.339	10+645.565
10+465.000	196.509	196.511	197.806	196.505	196.503	10+640.565
10+470.000	196.673	196.675	197.970	196.669	196.667	10+635.565
10+475.000	196.837	196.839	198.134	196.832	196.830	10+630.565
10+480.000	197.001	197.003	198.298	196.996	196.994	10+625.565
10+485.000	197.164	197.166	198.461	197.160	197.158	10+620.565
10+490.000	197.328	197.330	198.625	197.324	197.322	10+615.565
10+495.000	197.492	197.494	198.789	197.487	197.485	10+610.565
10+500.000	197.656	197.658	198.953	197.651	197.649	10+605.565
10+505.000	197.819	197.821	199.116	197.815	197.813	10+600.565
10+510.000	197.983	197.985	199.280	197.979	197.977	10+595.565
10+515.000	198.147	198.149	199.444	198.142	198.140	10+590.565
10+520.000	198.311	198.313	199.608	198.306	198.304	10+585.565
10+525.000	198.475	198.477	199.772	198.470	198.468	10+580.565
10+530.000	198.638	198.640	199.935	198.634	198.632	10+575.565
10+535.000	198.802	198.804	200.099	198.797	198.795	10+570.565
10+540.000	198.966	198.968	200.263	198.961	198.959	10+565.565
10+545.000	199.130	199.132	200.427	199.125	199.123	10+560.565
10+550.000	199.293	199.295	200.590	199.289	199.287	10+555.565
10+555.000	199.457	199.459	200.754	199.452	199.450	10+550.565
10+560.000	199.621	199.623	200.918	199.616	199.614	10+545.565
10+565.000	199.785	199.787	201.082	199.780	199.778	10+540.565
10+570.000	199.949	199.951	201.246	199.944	199.942	10+535.565
10+575.000	200.112	200.114	201.409	200.107	200.105	10+530.565
10+580.000	200.276	200.278	201.573	200.271	200.269	10+525.565



REVISIONS	
NAME	DATE

ILLINOIS DEPARTMENT OF TRANSPORTATION  
**CONCRETE BARRIER ELEVATIONS**  
 FAI ROUTE 74 (I-74) (WB)  
 RAMP B-3, B-5  
 DRAWN BY CADD  
 CHECKED BY MWP  
 DATE 11/12/04