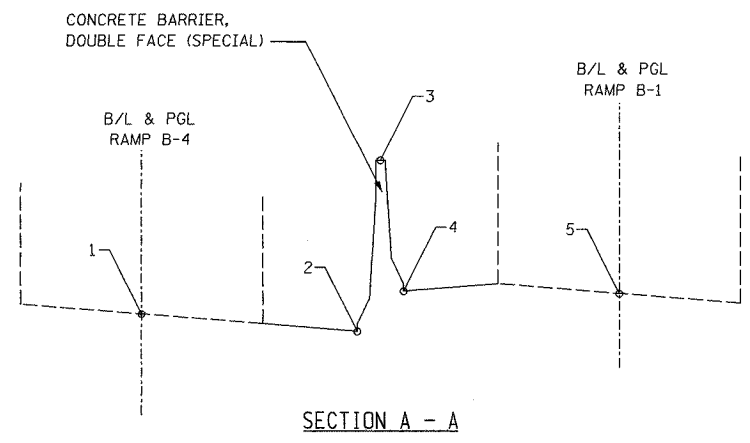
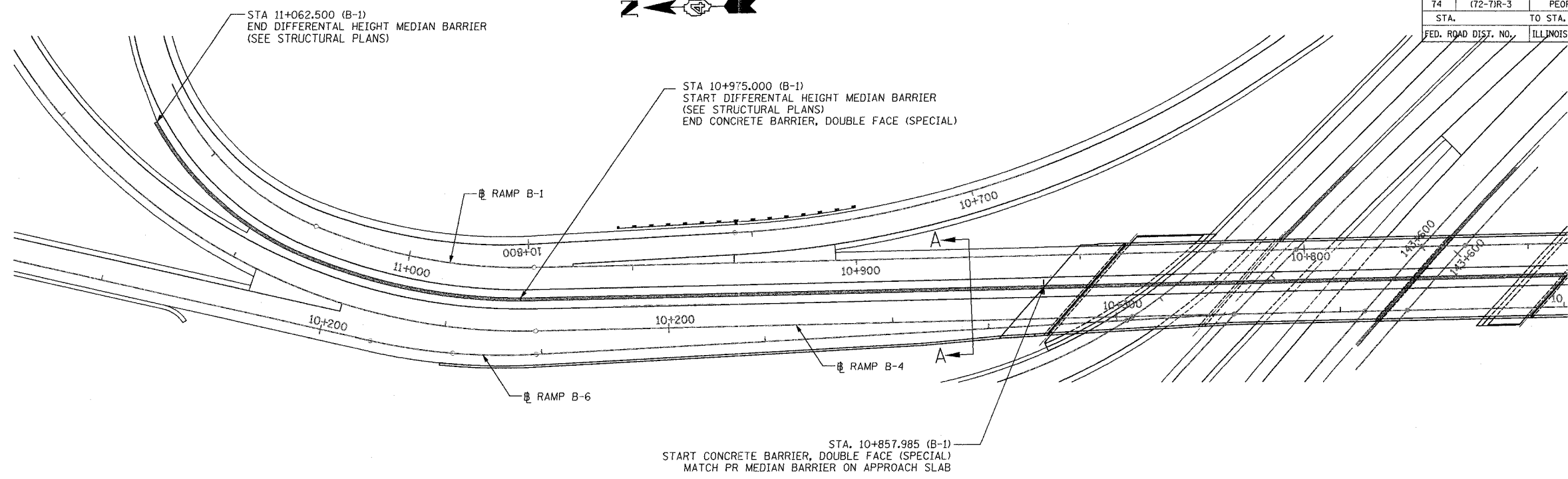
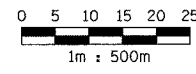


F.A. RTE.	SECTION	COUNTY	TOTAL SHEETS	SHEET NO.
74	(72-7)R-3	PEORIA	1360	470
STA.	TO STA.			
FED. ROAD DIST. NO.	ILLINOIS	FED. AID PROJECT		



- NOTES:**
1. BARRIER BASE WIDTH EQUALS 0.685m
 2. BARRIER HEIGHT EQUALS 1.295m ON HIGH SIDE OF SHOULDER. ON LOW SIDE OF SHOULDER, HEIGHT EQUALS DIFFERENCE BETWEEN SHOULDER ELEVATION AND TOP OF BARRIER ELEVATION.
 3. BARRIER ON LOW SIDE OF SHOULDER RETAINS GM-SHAPE TO 1.295m HIGH THEN PROVIDES VERTICAL FACE TO ACHIEVE REQUIRED HEIGHT. SEE CONCRETE BARRIER, DOUBLE FACE (SPECIAL) DETAILS.

RAMP B4 STATION	ELEVATIONS					RAMP B1 STATION
	1	2	3	4	5	
10+170.000	195.721	195.332	197.269	195.974	195.723	10+972.199
10+175.000	195.803	195.455	197.311	196.016	195.805	10+967.224
10+180.000	195.886	195.578	197.353	196.058	195.887	10+962.224
10+185.000	195.968	195.700	197.395	196.100	195.969	10+957.224
10+190.000	196.050	195.811	197.446	196.151	196.051	10+952.224
10+195.000	196.132	195.923	197.498	196.203	196.133	10+947.224
10+200.000	196.215	196.035	197.551	196.256	196.215	10+942.224
10+205.000	196.297	196.147	197.599	196.304	196.298	10+937.224
10+210.000	196.379	196.263	197.677	196.382	196.380	10+932.224
10+215.000	196.461	196.374	197.759	196.464	196.462	10+927.224
10+220.000	196.543	196.486	197.841	196.546	196.544	10+922.224
10+225.000	196.626	196.598	197.923	196.628	196.626	10+917.224
10+230.000	196.708	196.710	198.006	196.711	196.709	10+912.224
10+235.000	196.790	196.792	198.088	196.793	196.791	10+907.224
10+240.000	196.872	196.874	198.170	196.875	196.873	10+902.224
10+245.000	196.955	196.957	198.252	196.957	196.955	10+897.224
10+250.000	197.037	197.039	198.334	197.039	197.037	10+892.224
10+255.000	197.119	197.121	198.417	197.122	197.120	10+887.224
10+260.000	197.201	197.203	198.499	197.204	197.202	10+882.224
10+265.000	197.283	197.285	198.581	197.286	197.284	10+877.224
10+270.000	197.366	197.368	198.663	197.368	197.366	10+872.224
10+275.000	197.448	197.450	198.745	197.450	197.448	10+867.224
10+280.000	197.530	197.532	198.828	197.533	197.531	10+862.224



REVISIONS	
NAME	DATE

ILLINOIS DEPARTMENT OF TRANSPORTATION
CONCRETE BARRIER ELEVATIONS
 FAI ROUTE 74 (I-74) (WB)
 RAMP B-4, B-1
 DRAWN BY CADD
 CHECKED BY MWP
 DATE 11/12/04