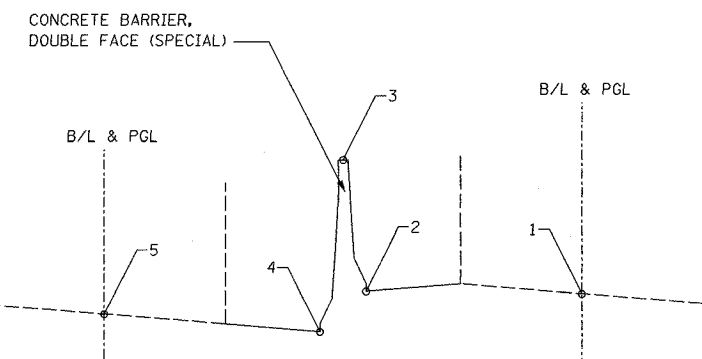
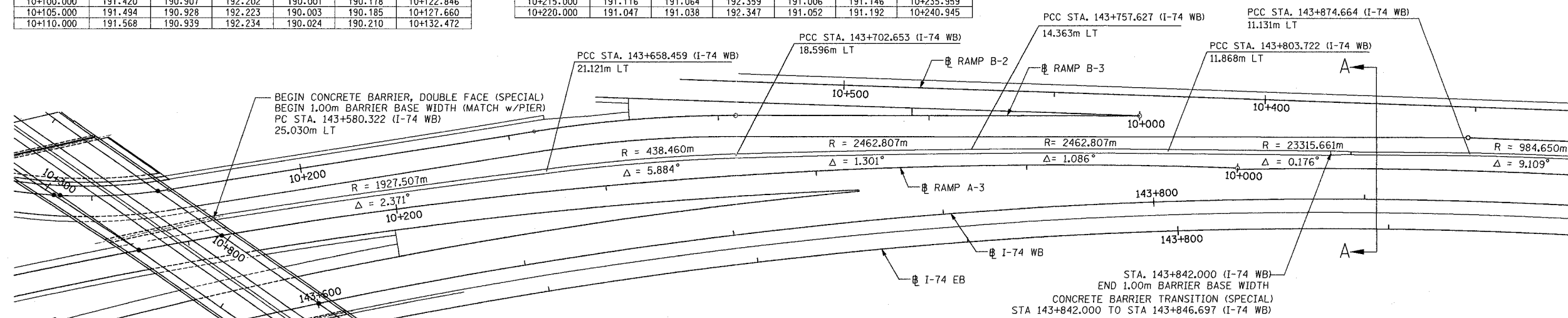


F.A. RTE.	SECTION	COUNTY	TOTAL SHEETS	SHEET NO.
74	(72-7)R-3	PEORIA	1360	412
STA.		TO STA.		
FED. ROAD DIST. NO.		ILLINOIS FED. AID PROJECT		

RAMP B3 STATION	ELEVATIONS					RAMP A3 STATION
	1	2	3	4	5	
10+000.000	189.939	189.743	191.038	188.933	189.056	10+023.269
10+005.000	190.010	189.815	191.110	188.993	189.114	10+028.256
10+010.000	190.081	189.886	191.181	189.051	189.171	10+033.243
10+015.000	190.153	189.958	191.253	189.108	189.228	10+038.231
10+020.000	190.224	190.030	191.325	189.166	189.286	10+043.218
10+025.000	190.304	190.109	191.404	189.224	189.344	10+048.206
10+030.000	190.384	190.188	191.483	189.281	189.402	10+053.193
10+035.000	190.448	190.250	191.545	189.338	189.460	10+058.180
10+040.000	190.511	190.312	191.607	189.394	189.518	10+063.167
10+045.000	190.583	190.382	191.677	189.450	189.576	10+068.154
10+050.000	190.655	190.452	191.747	189.504	189.632	10+073.141
10+055.000	190.742	190.535	191.830	189.559	189.690	10+078.127
10+060.000	190.828	190.618	191.913	189.613	189.748	10+083.113
10+065.000	190.902	190.689	191.984	189.667	189.806	10+088.099
10+070.000	190.976	190.729	192.024	189.721	189.864	10+093.084
10+075.000	191.050	190.774	192.069	189.774	189.922	10+098.068
10+080.000	191.124	190.814	192.109	189.826	189.979	10+103.052
10+085.000	191.198	190.853	192.148	189.877	190.036	10+108.036
10+090.000	191.272	190.884	192.179	189.929	190.094	10+113.019
10+095.000	191.346	190.896	192.191	189.980	190.151	10+118.000
10+100.000	191.420	190.907	192.202	190.001	190.178	10+122.846
10+105.000	191.494	190.928	192.223	190.003	190.185	10+127.660
10+110.000	191.568	190.939	192.234	190.024	190.210	10+132.472

RAMP B3 STATION	ELEVATIONS					RAMP A3 STATION
	1	2	3	4	5	
10+115.000	191.642	190.999	192.294	190.064	190.252	10+137.282
10+120.000	191.715	191.070	192.365	190.105	190.294	10+142.091
10+125.000	191.782	191.175	192.470	190.148	190.336	10+146.900
10+130.000	191.835	191.258	192.553	190.191	190.378	10+151.709
10+135.000	191.873	191.331	192.632	190.237	190.420	10+156.519
10+140.000	191.897	191.394	192.689	190.283	190.462	10+161.329
10+145.000	191.906	191.447	192.742	190.333	190.507	10+166.180
10+150.000	191.901	191.478	192.773	190.384	190.553	10+171.163
10+155.000	191.882	191.500	192.795	190.434	190.599	10+176.146
10+160.000	191.849	191.498	192.793	190.484	190.645	10+181.129
10+165.000	191.801	191.474	192.769	190.533	190.691	10+186.110
10+170.000	191.739	191.435	192.730	190.583	190.737	10+191.097
10+175.000	191.670	191.381	192.676	190.631	190.783	10+196.081
10+180.000	191.601	191.334	192.629	190.678	190.827	10+201.065
10+185.000	191.531	191.281	192.576	190.726	190.873	10+206.049
10+190.000	191.462	191.234	192.529	190.774	190.919	10+211.034
10+195.000	191.393	191.176	192.471	190.821	190.964	10+216.019
10+200.000	191.324	191.142	192.437	190.868	191.010	10+221.004
10+205.000	191.255	191.117	192.412	190.914	191.055	10+225.989
10+210.000	191.185	191.090	192.385	190.961	191.101	10+230.974
10+215.000	191.116	191.064	192.359	191.006	191.146	10+235.959
10+220.000	191.047	191.038	192.347	191.052	191.192	10+240.945

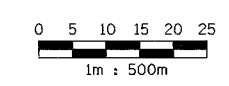
RAMP B2 STATION	ELEVATIONS					RAMP A3 STATION
	1	2	3	4	5	
10+410.000	189.573	189.537	190.832	188.697	188.831	10+003.986
10+415.000	189.648	189.592	190.887	188.759	188.889	10+008.972
10+420.000	189.722	189.651	190.946	188.820	188.947	10+013.960
10+425.000	189.796	189.743	191.038	188.881	189.005	10+018.948



SECTION A - A

NOTES:

- BARRIER BASE WIDTH EQUALS 0.685m, UNLESS OTHERWISE NOTED
- BARRIER HEIGHT EQUALS 1.295m ON HIGH SIDE OF SHOULDER, ON LOW SIDE OF SHOULDER, HEIGHT EQUALS DIFFERENCE BETWEEN SHOULDER ELEVATION AND TOP OF BARRIER ELEVATION.
- BARRIER ON LOW SIDE OF SHOULDER RETAINS GM-SHAPE TO 1.295m HIGH THEN PROVIDES VERTICAL FACE TO ACHIEVE REQUIRED HEIGHT. SEE CONCRETE BARRIER, DOUBLE FACE (SPECIAL) DETAILS.



PARSONS TRANSPORTATION GROUP
Engineers and Planners

REVISIONS	
NAME	DATE

ILLINOIS DEPARTMENT OF TRANSPORTATION
CONCRETE BARRIER ELEVATIONS
FAI ROUTE 74 (I-74) (WB)
RAMP A-3, B-2, B-3
DRAWN BY CADD
CHECKED BY MWP
DATE 11/12/04