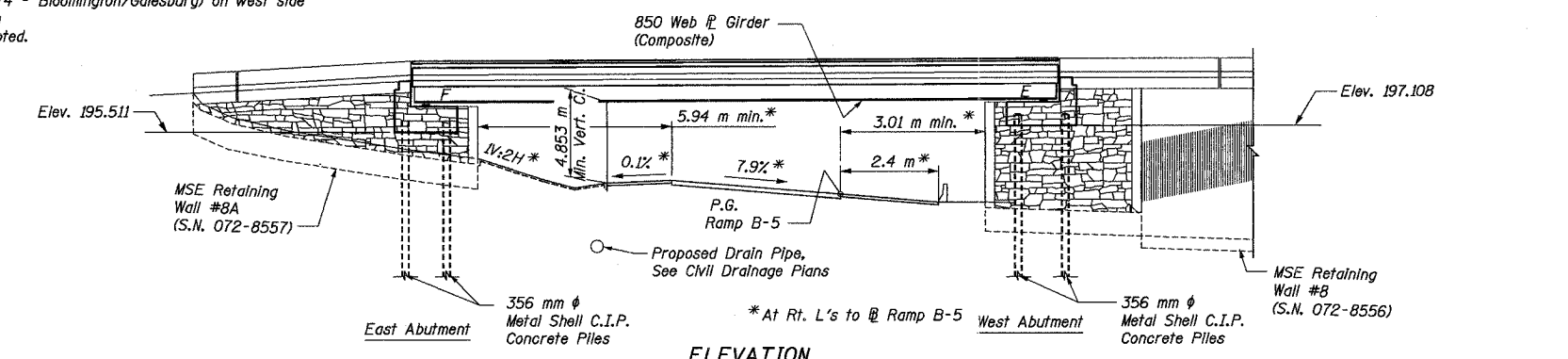


Date: 11/22/2004
 Time: 10:24:43 AM
 File: P:\643996\structure\072-0172\Sheet\Tracings\GP0001-A0720172.dgn

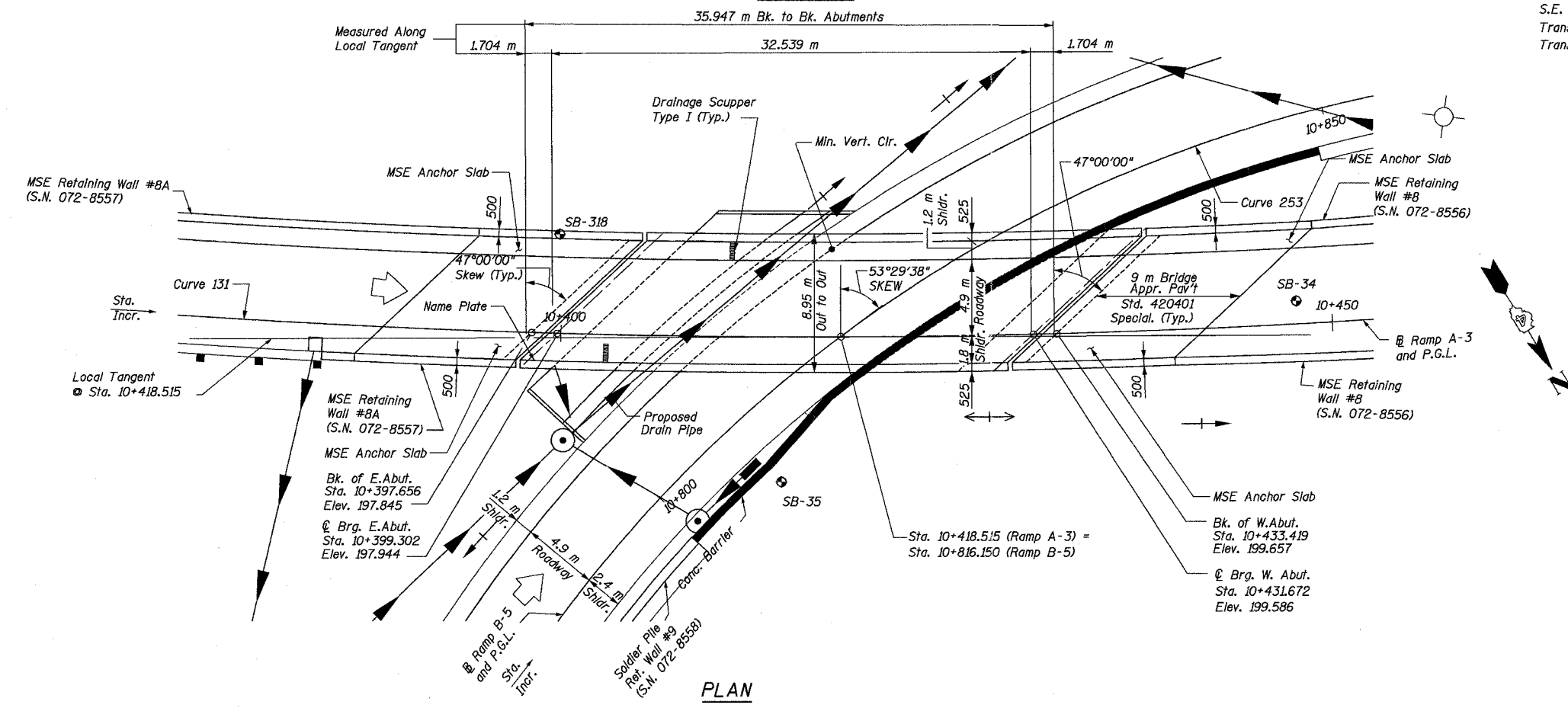
B. M. #49 : Southwest base bolt on aluminum light pole, north side of WB lanes, I-74 and 30 m west of bridge, War Memorial Drive spur over I-74, El. 190.771 m
 B. M. #3001 : Chiseled "□" on concrete sign base (I-74 - Bloomington/Galesburg) on west side of War Memorial Drive spur, El. 198.767 m
 Note: All dimensions are in millimeters (mm) except as noted.

ROUTE NO.	SECT.	COUNTY	SHEET NO.	TOTAL SHEETS
F.A.I. 74	(72-7) R-3	PEORIA	420	1360
FED. ROAD DIST. NO. 7	ILLINOIS	FED. AID PROJECT		

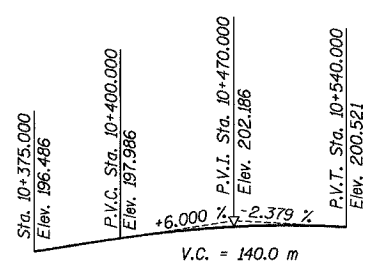
CONTRACT NO. 68200



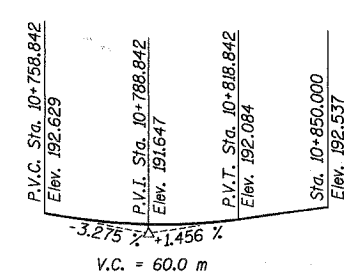
ELEVATION



PLAN



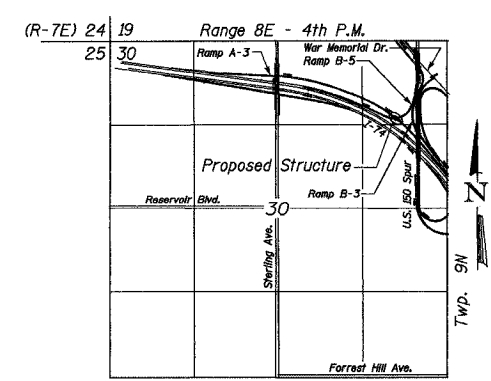
PROFILE GRADE RAMP A-3
(Along @ Ramp A-3)



PROFILE GRADE RAMP B-5
(Along @ Ramp B-5)

STA. 10+418.515
 BUILT 200... BY
 STATE OF ILLINOIS
 F.A.I. ROUTE 74 SEC (72-7)R-3
 LOADING MS-18 & ALT
 STR. NO. 072-0172

NAME PLATE
See Std. 515:001



LOCATION SKETCH

CURVE DATA

RAMP A-3 - CURVE 131	RAMP B-5 - CURVE 253
$\Delta = 11^\circ 59' 18''$ (LT)	$\Delta = 113^\circ 09' 52''$ (RT)
$R = 605,000$ m	$R = 88,000$ m
$T = 63,526$ m	$T = 133,370$ m
$L = 126,588$ m	$L = 173,809$ m
$E = 3,326$ m	$E = 71,786$ m
$PC\ STA = 10+377.679$	$PC\ STA = 10+681.815$
$PI\ STA = 10+441.205$	$PI\ STA = 10+815.184$
$PT\ STA = 10+504.267$	$PT\ STA = 10+855.624$
$S.E. = -3.4\%$	$S.E. = 7.9\%$
Transition in N/A	Transition in 10+650 to 10+698
Transition out Sta. 10+499 to Sta. 10+504	Transition out Sta. 10+840 to Sta. 10+888

DESIGN SPECIFICATIONS
1996 AASHTO with Interlms through 2002

LOADING MS18 & ALT.
Allow 2.4 kN/m² for future wearing surface.

DESIGN STRESSES

FIELD UNITS
 $f'c = 24$ MPa
 $f_y = 400$ MPa (Reinf.)
 $f_y = 345$ MPa (Struct.) (M 270M Grade 345)

SEISMIC DATA

Seismic Performance Category (SPC) = A
 Bedrock Acceleration Coefficient (A) = 0.043g
 Site Coefficient (S) = 1.0



REVISION	DATE	DESCRIPTION
STATE OF ILLINOIS DEPARTMENT OF TRANSPORTATION GENERAL PLAN RAMP A-3 OVER RAMP B-5 F.A.I. ROUTE 74 (SECTION 72-7)R-3 PEORIA COUNTY STA. 10+418.515 (RAMP A-3) STRUCTURE NUMBER 072-0172 PARSONS TRANSPORTATION GROUP CHICAGO, ILLINOIS		
DRAWING NO. G-1	SCALE N.T.S.	DATE 11/16/04
		SHEET NO. 1