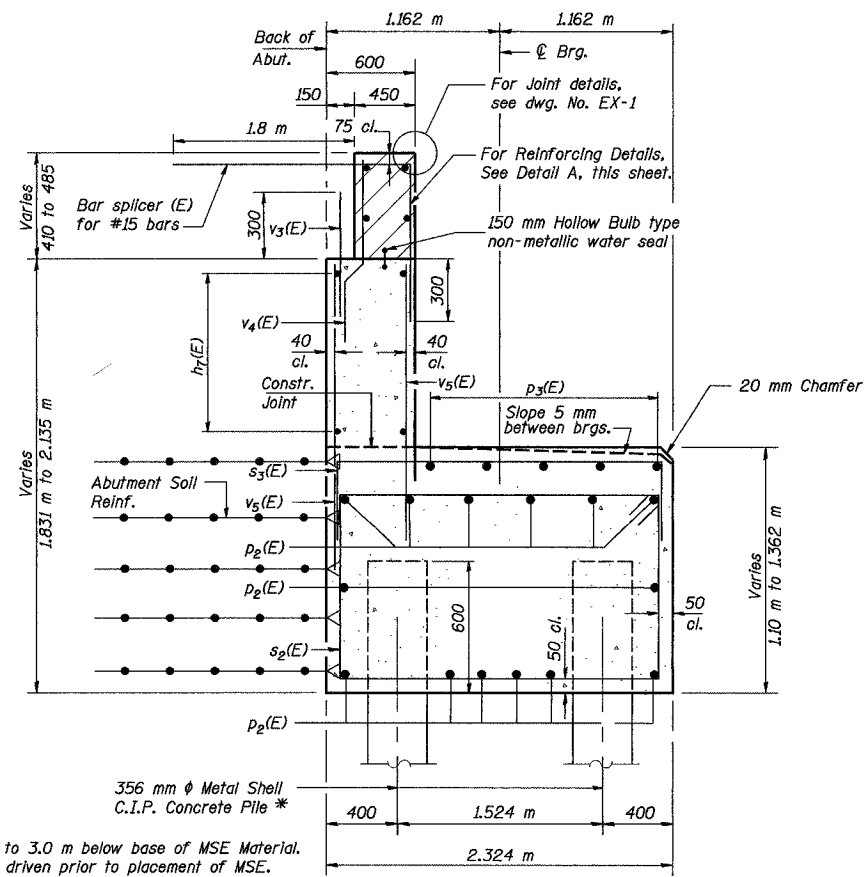


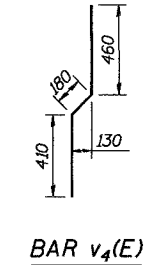
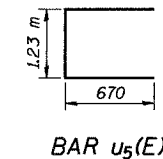
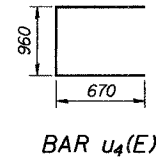
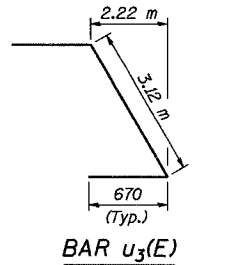
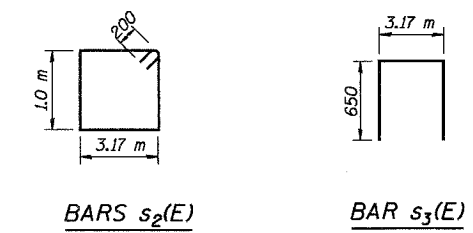
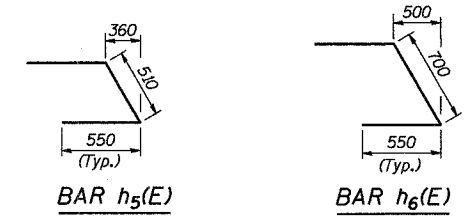
ROUTE NO.	SECT.	COUNTY	SHEET NO.	TOTAL SHEETS
F.A.I. 74	(72-7) R-3	PEORIA	434	1340
FED. ROAD DIST. NO. 7	ILLINOIS	FED. AID PROJECT		

CONTRACT NO. 68200



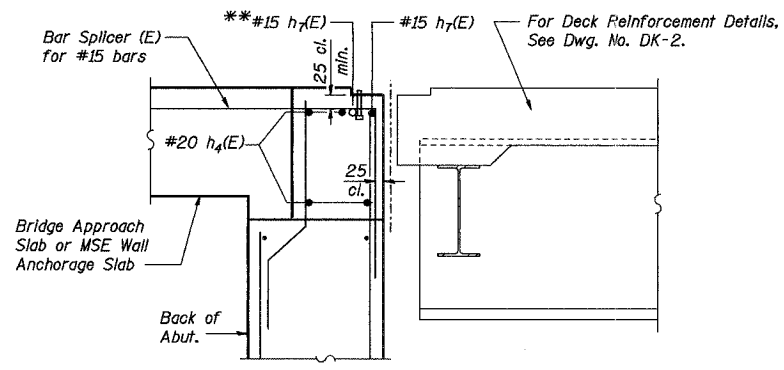
\* Precast Piles to 3.0 m below base of MSE Material. Piles must be driven prior to placement of MSE. Coat Piles above existing ground with 6 mm min. thickness of either asphaltic cement or S.C. or M.C. liquid asphalt. (See S.N. 072-8557).

SECTION A-A



BILL OF MATERIAL

Bar	No.	Size	Length (m)	Shape
h <sub>4</sub> (E)	4	#20	11.10	—
h <sub>5</sub> (E)	4	#15	1.61	—
h <sub>6</sub> (E)	6	#15	1.80	—
h <sub>7</sub> (E)	7	#15	11.10	—
p <sub>2</sub> (E)	14	#25	11.08	—
p <sub>3</sub> (E)	5	#20	6.72	—
p <sub>4</sub> (E)	5	#20	3.47	—
s <sub>2</sub> (E)	37	#20	8.74	□
s <sub>3</sub> (E)	24	#15	4.47	□
u <sub>3</sub> (E)	9	#20	4.46	—
u <sub>4</sub> (E)	8	#20	2.30	—
u <sub>5</sub> (E)	8	#20	2.57	—
v <sub>3</sub> (E)	38	#15	0.70	—
v <sub>4</sub> (E)	38	#15	1.05	—
v <sub>5</sub> (E)	76	#15	1.10	—
Concrete Structures		m <sup>3</sup>	37.6	
Reinforcement Bars, Epoxy Coated		kg	2340	
Furnishing Metal Pile Shells, 356 mm		m	228	
Driving and Filling Shells		m	228	
Bridge Seat Sealer		m <sup>2</sup>	20	



\*\* Place h<sub>7</sub>(E) bars in back of anchor bolt as shown, if required to maintain 25 mm cl. (+0-3 mm) Anchor bolts should be tied to h<sub>7</sub>(E) bars.

Notes:  
 Work this drawing with Dwg. No. AB-3.  
 Reinforcement bars designated (E) shall be epoxy coated.  
 All dimensions are in millimeters (mm) unless noted otherwise.

REVISION	DATE	DESCRIPTION
STATE OF ILLINOIS DEPARTMENT OF TRANSPORTATION		
EAST ABUTMENT DETAILS		
RAMP A-3 OVER RAMP B-5 F.A.I. ROUTE 74 (SECTION 72-7)R-3 PEORIA COUNTY STA. 10+418.515 (RAMP A-3) STRUCTURE NUMBER 072-0172		
PARSONS TRANSPORTATION GROUP CHICAGO, ILLINOIS		
DRAWING NO. AB-4	SCALE N.T.S.	DATE 11/16/04
		SHEET NO. 15

Time: 09/13/2004 AM

Date: 11/19/2004

Filename: P:\643996\struc\ur\at\A3\072-0172\Sheet\Tracings\AB0004-1A0720172.dgn

Designed by: WEE  
 Checked by: RW  
 Drafted by: RKS  
 Checked by: WEE