

ROUTE NO.	SECT.	COUNTY	SHEET NO.	TOTAL SHEETS
F.A.I. 74	(72-7) R-3	PEORIA	445	1360
FED. ROAD DIST. NO. 7	ILLINOIS	FED. AID PROJECT		

**GENERAL NOTES**

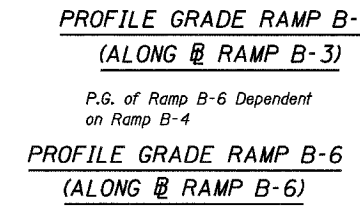
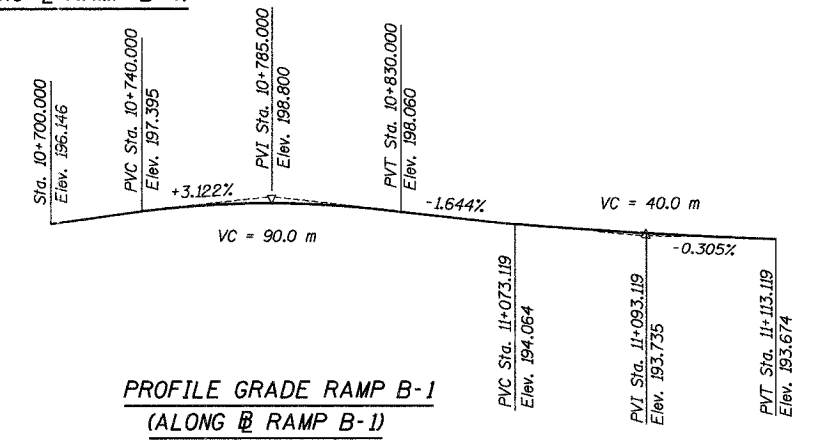
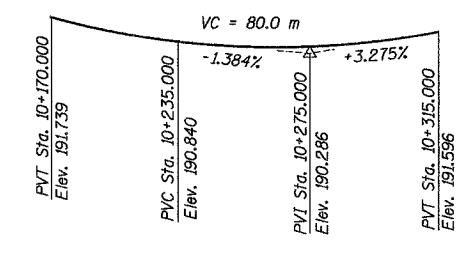
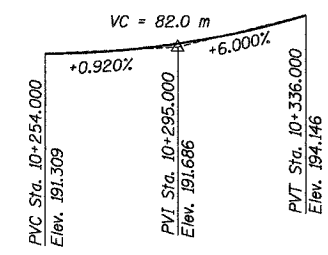
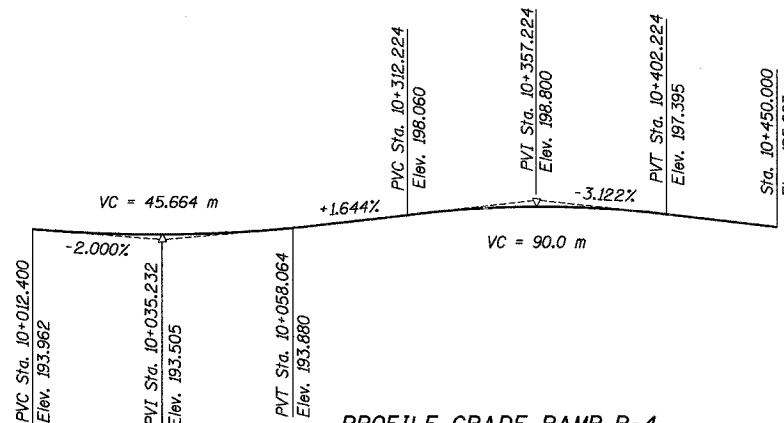
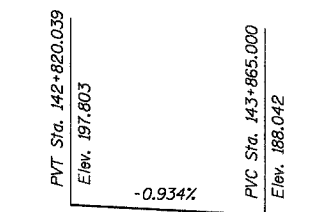
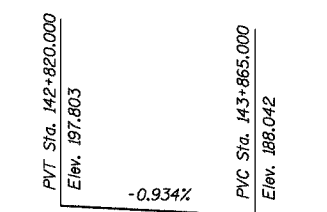
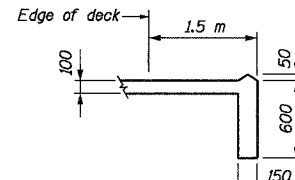
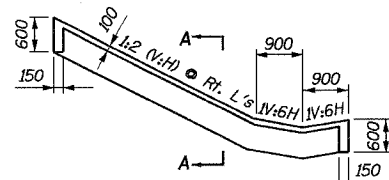
- Side retainers shall be galvanized after shop fabrication according to AASHTO M111 and ASTM A385.
- The structural steel bearing plates of the Elastomeric Bearing Assembly shall conform to the requirements of AASHTO M270M Grade 345.
- Reinforcement bars shall conform to the requirements of AASHTO M 31M, M 42M or M 53M Grade 400.
- Slope wall shall be reinforced with welded wire fabric, 152 x 152 - MW25.8 x MW25.8 with a mass of 2.91 kg/m<sup>2</sup>.
- The back face of Closed Abutments and their wingwalls shall be waterproofed according to Article 503.18 of the Standard Specifications.
- The contractor shall drive four (4) metal shell test piles in permanent locations, two (2) at South Abutment, one (1) at North Abutment and one (1) HP 310x79 test pile in a permanent location at Pier 1, as directed by the Engineer before ordering the remainder of piles.
- Bridge Seat Sealer shall be applied to the seat area of the Abutments
- All dimensions are in millimeters (mm) except as noted.
- The existing structural steel coating contains lead. The contractor should take appropriate precautions to deal with the presence of lead on this project.
- All existing aluminum bridge rail and rail bases are to be salvaged and delivered by the Contractor to the IDOT Bridge Maintenance Yard in East Peoria. The contact person is Dan Edwards at (309) 699-3823. The Contractor shall provide 24 hour notice in advance of delivery. All deliveries shall be Monday through Friday. The Contractor shall replace any rail that is damaged during removal.

**TOTAL BILL OF MATERIAL**

ITEM	UNIT	SUPER	SUB	TOTAL
Removal of Existing Structures #1	Each			1
Elastomeric Bearing Assembly, Type I	Each	24		24
Elastomeric Bearing Assembly Type II	Each	8		8
Name Plates	Each		1	1
Porous Granular Embankment	m <sup>3</sup>	522		522
Structure Excavation	m <sup>3</sup>		2782	2782
Neoprene Expansion Joint 50 mm	m	24.7		24.7
Neoprene Expansion Joint 100 mm	m	26.4		26.4
Concrete Structures	m <sup>3</sup>		1215	1215
Concrete Superstructure	m <sup>3</sup>	729.8		729.8
Bridge Deck Grooving	m <sup>2</sup>	2151		2151
Protective Coat	m <sup>2</sup>	2722		2722
Furnishing And Erecting Precast Prestressed Concrete I-Beams 1067 mm	m	161.5		161.5
Furnishing And Erecting Precast Prestressed Concrete Bulb T-Beams 1829 mm	m	846.5		846.5
Furnishing and Erecting Structural Steel	kg		2820	2820
Reinforcement Bars, Epoxy Coated	kg	108000	70860	178860
Slope Wall 100 mm	m <sup>2</sup>		465	465
Furnishing Steel Piles HP310x79	m		663	663
Driving Steel Piles	m		663	663
Test Pile Steel HP310x79	Each		1	1
Furnishing Metal Pile Shells 305mm	m		566	566
Furnishing Metal Pile Shells 356mm	m		1266	1266
Driving And Filling Shells	m		1832	1832
Test Pile Metal Shells	Each		4	4
Bridge Seat Sealer	m <sup>2</sup>		58	58
Protective Shield	m <sup>2</sup>	466		466
Drainage Scouppers, Type II	Each		8	8
Bar Splicers	Each		88	88
Aluminum Railing, Type H (Special)	m	257		257
Form Liner Limestone Surface	m <sup>2</sup>		150	150
Form Liner Grid and Fin Surface	m <sup>2</sup>		194	194
Install Bollards and Luminares	Each		8	8
Form Liner Parapet Surface	m <sup>2</sup>	140		140

**INDEX OF DRAWINGS**

- General Plan
- General Notes, Total Bill of Material, Misc. Details
- Substructure Layout
- Plan For Top of Slab Elevations
- Top of Slab Elevations - Span 1
- Top of Slab Elevations - Spans 2 to 4
- Top of Slab Elevations - Spans 2 to 4
- Deck Plan and Cross Section - Span 1
- Parapet and Median Details - Span 1
- Diaphragm Details - Span 1
- Deck Plan and Cross Section - Spans 2 & 3
- Deck Plan and Cross Section - Span 4
- Diaphragm Details - Spans 2, 3 & 4
- Diaphragm Details - Pier 1
- Parapet Elevations and Details
- Median Barrier Elevation and Details
- Framing Plan and Temporary Bracing Details
- Beam Reaction and Moment Table
- 1067 mm PPC I-Beam - South Vaulted Beam Nos. 1-9 Span 1
- 1829 mm PPC Bulb T-Beam - Beam Nos. 10-17 Span 2
- 1829 mm PPC Bulb T-Beam - Flared Beam No. 10 Span 3
- 1829 mm PPC Bulb T-Beam - Beam Nos. 11-17 Span 3
- 1829 mm PPC Bulb T-Beam - Flared Beam No. 10 Span 4
- 1829 mm PPC Bulb T-Beam - Flared Beam No. 11 Span 4
- 1829 mm PPC Bulb T-Beam - Flared Beam No. 12 Span 4
- 1829 mm PPC Bulb T-Beam - Beam Nos. 13-17 Span 4
- Expansion Bearings - South Abutment & Pier 2
- Expansion Bearings - North Abutment
- South Abutment Plan
- South Abutment Elevation
- South Abutment Details I
- South Abutment Details II
- North Abutment Plan
- North Abutment Elevation
- North Abutment Details I
- North Abutment Details II
- North Abutment Details III
- North Abutment Details IV
- North & South Abutment Architectural Details
- Pier 1
- Pier 1 Details
- Pier 2
- Pier 2 Details
- Drainage Scouper, Type II
- Neoprene Expansion Joint Details
- Metal Shell Pile Details
- Anchor Bolt Details
- Bar Splicer Assembly Details
- Railing Details - Single Rail
- Precast Concrete Bollard
- Bollard Luminaire
- Boring Logs I
- Boring Logs II
- Boring Logs III
- Boring Logs IV



P.G. of Ramp B-6 Dependent on Ramp B-4

Designed by: DL  
 Checked by: AK  
 Drafted by: JV  
 Checked by: AK

REVISION	DATE	DESCRIPTION
STATE OF ILLINOIS DEPARTMENT OF TRANSPORTATION		
GENERAL NOTES, TOTAL BILL OF MATERIAL, MISC. DETAILS		
RAMPS B-1 AND B-4 OVER F.A.I. ROUTE 74 (I-74) RAMPS A-3 AND B-3		
F.A.I. ROUTE 74 SECTION (72-7) R-3 PEORIA COUNTY STATION 10+779.03 STRUCTURE NUMBER 072-0183		
PARSONS TRANSPORTATION GROUP CHICAGO, ILLINOIS		
DRAWING NO. 2	SCALE N.T.S.	DATE 2-18-03
		SHEET NO. 2

Date: 1/19/2004 Time: 09:36:09 AM File: P:\443996\Structural\072-0183\Sheet1\Tracings\GP0002-140720183.dgn