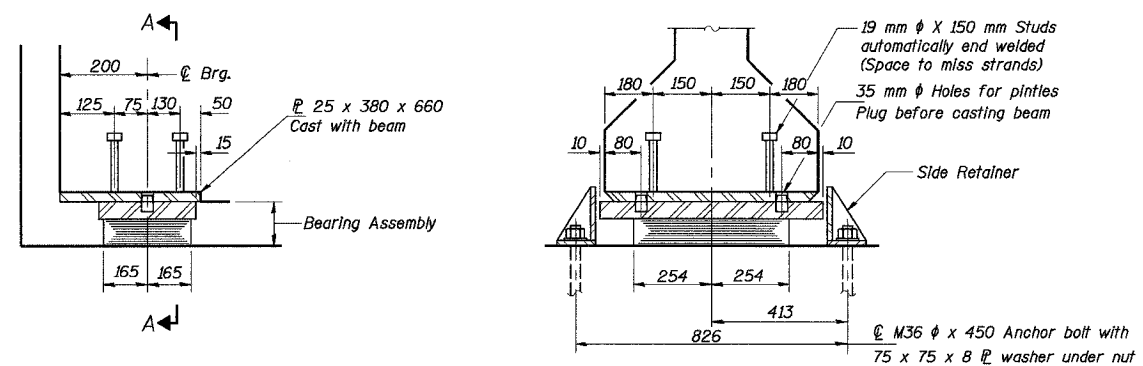


ROUTE NO.	SECT.	COUNTY	SHEET NO.	TOTAL SHEETS
F.A.I. 74	(72-7) R-3	PEORIA	470	1300
FED. ROAD DIST. NO. 7	ILLINOIS	FED. AID PROJECT		

CONTRACT NO. 68200

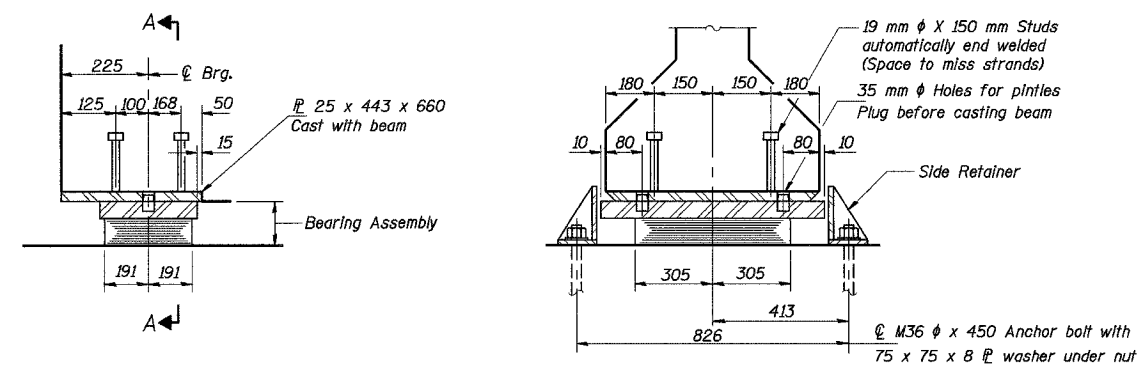


ELEVATION AT S. ABUT.

SECTION A-A

TYPE I ELASTOMERIC EXP. BRG.

(S. Abut. - Span 2)

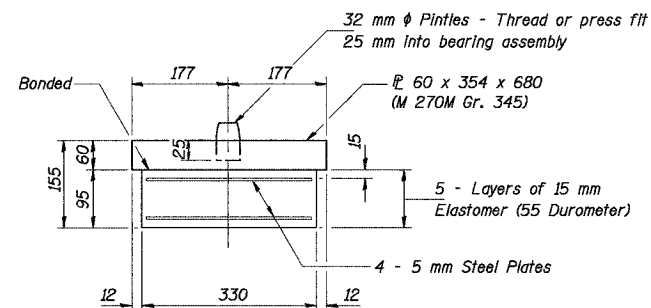


ELEVATION

SECTION A-A

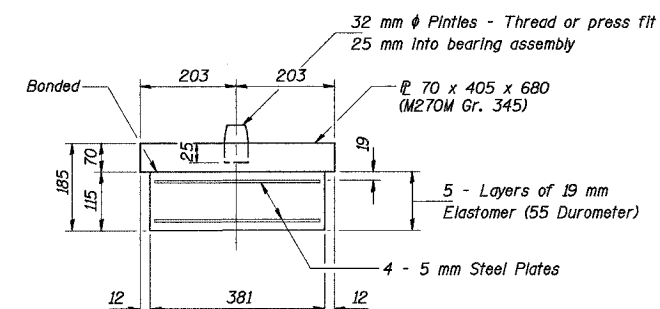
TYPE I ELASTOMERIC EXP. BRG.

(Pier 2 - Span 3 & Pier 2 - Span 4)



BEARING ASSEMBLY (S. ABUT.)

Note: Shim plates shall not be placed under Bearing Assembly.



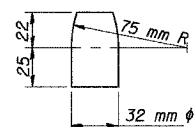
BEARING ASSEMBLY (PIER 2)

Note: Shim plates shall not be placed under Bearing Assembly.

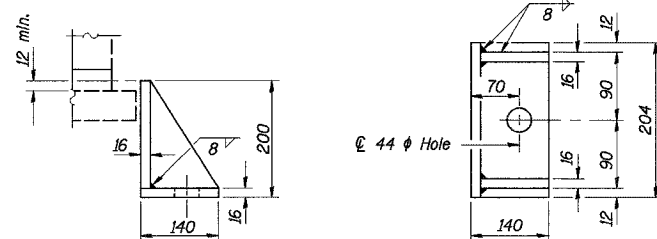
BILL OF MATERIAL

Item	Unit	Total
Elastomeric Bearing Assembly, Type I	Each	24

Notes:
After beams have been erected holes at expansion bearings shall be drilled and anchor bolts grouted in place.
See sheet 47 for anchor bolt installation.
All dimensions are in millimeters (mm) except as noted.



PINTLE



SIDE RETAINER

Equivalent rolled angle with stiffeners will be allowed in lieu of welded plates. Mass included with structural steel.

Designed by: DL
Checked by: AK
Drafted by: JV
Checked by: AK

Time: 10:05:04 AM

Date: 1/19/2004

File name: P:\643996\structure\072-0183\Sheet\Tracings\SD0004-1A072083.dgn

REVISION	DATE	DESCRIPTION
STATE OF ILLINOIS DEPARTMENT OF TRANSPORTATION EXPANSION BEARINGS SOUTH ABUTMENT & PIER 2 RAMPS B-1 AND B-4 OVER F.A.I. ROUTE 74 (I-74) RAMPS A-3 AND B-3 F.A.I. ROUTE 74 SECTION (72-7) R-3 PEORIA COUNTY STATION 10+779.03 STRUCTURE NUMBER 072-0183 PARSONS TRANSPORTATION GROUP CHICAGO, ILLINOIS		
DRAWING NO. 27	SCALE N.T.S.	DATE 2-18-03
		SHEET NO. 27