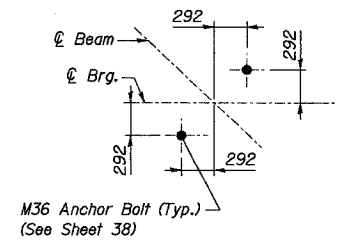
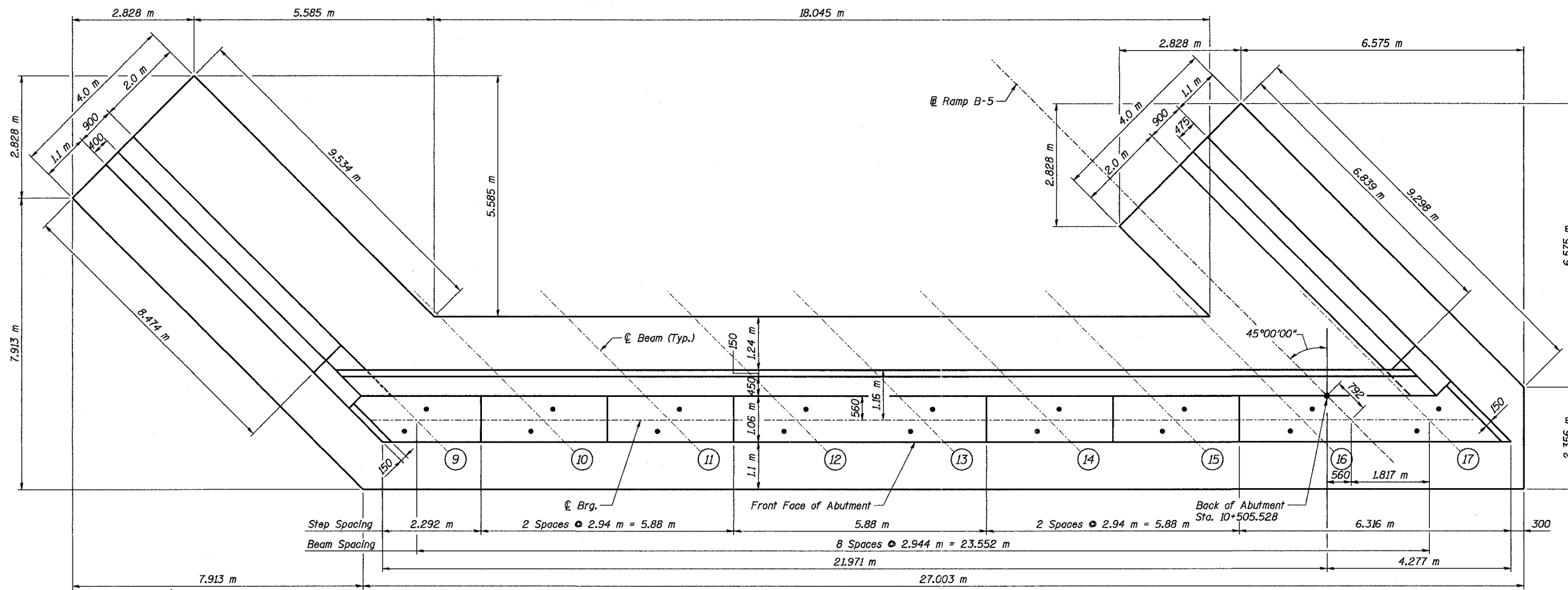


Time: 09:26:36 AM
Date: 11/22/2004

ROUTE NO.	SECT.	COUNTY	SHEET NO.	TOTAL SHEETS
F.A.I. 74	(72-7) R-3	PEORIA	523	1340
FED. ROAD DIST. NO. 7	ILLINOIS FED. AID PROJECT		CONTRACT NO. 68200	

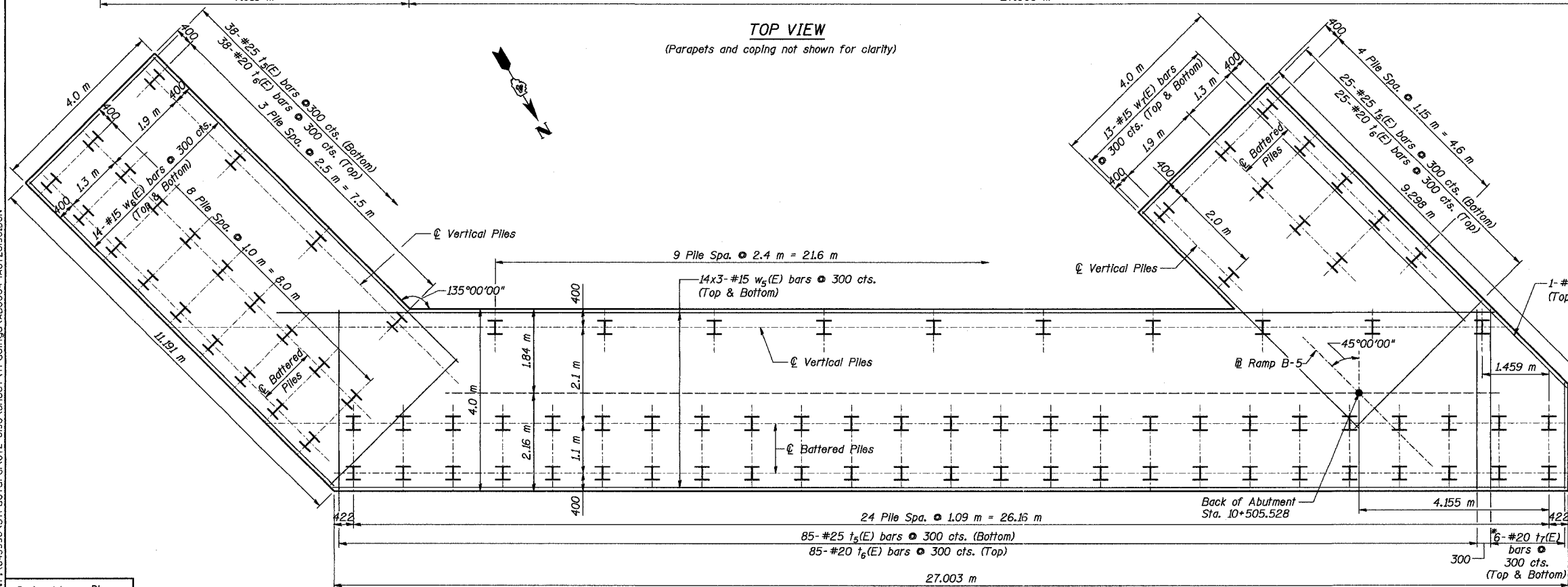


PILE DATA

Type: Steel Piles HP310x79
 Capacity: 400 kN
 Est. Length: 9.0 m
 Piles Driven to 600 kN Brg.
 No. Required: 92 Plus 1 Test Pile

Notes:
 Reinforcement bars designated (E) shall be epoxy coated.
 Bars indicated thus 11x2-#15 etc. indicates 11 lines of bars with 2 lengths per line.
 All dimensions are in millimeters (mm) except as noted.
 Work this Sheet with Sheets 25 & 26.

MIN. BAR LAP
 #15 bar = 640



Designed by: DL
 Checked by: AK
 Drafted by: JV
 Checked by: AK

*Order t_s(E) bars full length.
 Cut to fit and use the remainder of bars in opposite face.

REVISION	DATE	DESCRIPTION
STATE OF ILLINOIS DEPARTMENT OF TRANSPORTATION		
SOUTH ABUTMENT PLAN		
RAMPS B-3 AND B-5 OVER WAR MEMORIAL DR. AND RAMP B-6 F.A.I. ROUTE 74 SECTION (72-7) R-3 PEORIA COUNTY STA. 10+618.61 (RAMP B-3) STA. 10+472.60 (RAMP B-5) STRUCTURE NUMBER 072-0190		
PARSONS TRANSPORTATION GROUP CHICAGO, ILLINOIS		
DRAWING NO. 24	SCALE N.T.S.	DATE 2-21-03
		SHEET NO. 24